

# Data Management



<b>About Data Folder .....</b>	<b>11-2</b>	<b>Advanced Features.....</b>	<b>11-14</b>
<b>Accessing Files .....</b>	<b>11-3</b>	Accessing Files .....	11-14
Opening Files.....	11-3	Editing Files .....	11-15
Creating Animations .....	11-4	Managing Folders .....	11-15
Using Playlist (Melodies) .....	11-5	Managing Files .....	11-16
Using Playlists (Videos).....	11-5	Memory Card.....	11-16
<b>Editing Files.....</b>	<b>11-7</b>		
Editing Still Images.....	11-7		
Editing Videos .....	11-8		
<b>File &amp; Folder Management.....</b>	<b>11-9</b>		
Creating a Folder.....	11-9		
Moving Files to a Different Folder .....	11-9		
<b>About Memory Card.....</b>	<b>11-10</b>		
Inserting & Removing a Memory Card.....	11-10		
<b>Managing Memory Cards .....</b>	<b>11-11</b>		
Formatting a Memory Card .....	11-11		
Accessing Memory Card Data.....	11-11		
Copying Data between Handset & Memory Card.....	11-12		
Configuring Print Settings of Images.....	11-13		

## 11



## About Data Folder

Use Data Folder to manage data on handset. New data created by handset functions or obtained via the Internet or mail are saved to different folders according to the file format.

- Some folders contain links. Use the links to access download sites in Yahoo! Keitai.

### Folders & Files in Data Folder

#### My Picture

Image files such as those taken by camera and downloaded My Pictograms

#### Melody

Melodies and audio files recorded by Voice Announce

#### S! Appli

Downloaded S! Appli and Lifestyle-Appli

#### Ring Songs-Music

Chaku-Uta®, Chaku-Uta Full® and downloaded music files

#### Videos


Video files such as those recorded by camera

#### TV

Recorded programs<sup>1</sup> and still images captured from programs<sup>2</sup>

- 1 Can be saved on memory card only.
- 2 Can be saved on handset only.

When Data Folder memory is full or number of files savable is reached, a message asks whether to delete unnecessary data (note, however, this message may not appear depending on the data type). Follow the steps below to delete data:

YES → ● → Select a folder → ● → Select a data item → ● →  → YES → ●

- You may need to select a data type before selecting a folder if the data you want to delete has multiple storage areas.
- You may need to select more than one data item to delete depending on the degree of insufficient memory.



## Opening Files

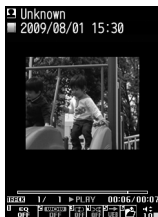
<Example> Open Video File

- 1 MENU → **Data Folder** → ● → **Videos** → ●
- 2 Select a folder → ●



File List

- 3 Select a file → ●



Opened File Window

## Opening Files on Memory Card

- 1 MENU → **Data Folder** → ●
- 2 Select a folder → ● → **microSD** → ●
- 3 Select a folder → ●
- 4 Select a file → ●

## Indicators in File List

In File List, indicators appear for settable items.

- QVGA movie
- VGA movie
- Attachable to mail
- Insertable in Graphic Mail
- Settable as wallpaper, etc.
- Settable as a ringtone
- Infrared transmittable
- Copyable or movable to memory card
- Editable
- Over 10 MB  
(Viewable only in Memory Card)

## Functions in My Picture Window

Selecting a file in My Picture folder opens a window such as below.



My Picture Window

The following operations are possible in My Picture window.

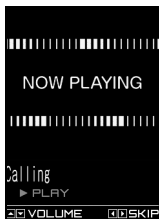
Switch Files	●
Toggle Normal Screen and Full Screen	<ul style="list-style-type: none"> <li>In full screen mode, view lengthwise images in Portrait View and widthwise images in Landscape View.</li> </ul>
Zoom In/Zoom Out*	● →  or
Show at Actual Size*	● →
Scroll Large-sized or Zoomed-in Image*	

\* Press ● to return to the original size.



## Functions in Melody Window

Selecting a file in Melody folder opens a window such as below.



Melody Window

The following operations are possible in Melody window.

Switch Files	
Adjust Volume	
	77- OF MUSIC
Stop	
End	

### Tip

- Select files in S! Appli to activate S! Appli. For information about S! Appli, see P. 9-8.
- Select files in Ring Songs-Music or Videos to activate Music Player. For details, see P. 9-3.

## Creating Animations

Create animations each of which is made of up to 20 frames using still images in My Picture folder.

- 1 ⇒ **Data Folder** ⇒ ⇒ **My Picture** ⇒ ⇒ **Original animation** ⇒



Original Animation List

- 2 **<New>** ⇒
  - 3 **Select a frame** ⇒ ⇒ **Select a folder** ⇒ ⇒ **Select a still image** ⇒
- Repeat this step to assign a series of images to their respective frames.
- **To Cancel an Assigned Image**  
 ⇒ Select a frame ⇒ ⇒ **Release this** ⇒

## 4

### Note

- Only images in JPEG format can be used for creating animations.
- Some images may be unavailable depending on the image size or file size.
- Images saved on external memory devices (i.e. memory card) cannot be used.

### Tip

- Select an animation you created in Original Animation List and press to play the animation.



## Using Playlist (Melodies)

Save melodies to Playlist to play back in the saved order.

1 ⇒ **Data Folder** ⇒ ⇒ **Melody** ⇒ ⇒ **Playlist**

2 ⇒ **Edit playlist** ⇒

■ **To Clear Playlist**

⇒ ⇒ **Release playlist** ⇒ ⇒ **YES** ⇒

3 **Select a number** ⇒ ⇒ **Select a folder** ⇒ ⇒ **Select a melody** ⇒

Repeat this step to assign other melodies to different numbers.

■ **To Cancel an Assigned Melody**

⇒ **Select a number** ⇒ ⇒ **Release this** ⇒

4

### Tip

- Select Playlist folder in Melody and press to play Playlist.
- Changing file names of melodies on Playlist, or deleting melody files clears Playlist.

## Using Playlists (Videos)

Save videos to a playlist to play them in the playlist order.

1 ⇒ **Data Folder** ⇒ ⇒ **Videos** ⇒ ⇒ **Playlist** ⇒



Playlist Window

2 **Select a playlist** ⇒ ⇒ **Edit playlist** ⇒

3 **Select a number** ⇒ ⇒ **Select a folder** ⇒ ⇒ **Select a video** ⇒   
Repeat this step to assign other videos to different numbers.

■ **To Cancel an Assigned Video**

⇒ **Select a number** ⇒ ⇒ **Release this** ⇒ ⇒ **YES** ⇒

4

### Tip

- Select a playlist from a playlist folder and press to play.



## More Features

### Advanced

#### Opening Files

- Check File Information
- Change Order of Files
- Set an Image to Appear in Standby
- Set a Video to Appear in Standby
- Set a Melody/Video as Ringtone

(▶ P. 11-14)

#### Viewing Images

- Play Animation from the Beginning
- Compose Four Images to Make One
- Set Display Size of an Image
- Edit Title of an Original Animation
- Cancel an Original Animation

(▶ P. 11-14)

#### Playing Melodies

- Play All Melodies in the Same Folder Repeatedly

(▶ P. 11-15)

#### Playing Videos

- Switch Display Format of File List
- Clear a Playlist

(▶ P. 11-15)

### Customize

#### Display Settings

- Set Image List View

(▶ P. 13-3)



## Editing Still Images

### Basic Flow of Operations

- 1 ⇒ **Data Folder** ⇒ ⇒ **My Picture** ⇒ ⇒ **Select a folder** ⇒ ⇒ **Select an image** ⇒



My Picture Window

- 2 ⇒ **Edit image** ⇒ ⇒ **Select an editing option** ⇒ ⇒ **Edit image**
- 3 to end editing
- 4 ⇒ **YES or NO** ⇒   
Selecting **YES** overwrites the original image. Selecting **NO** saves the edited image as a new file in the same folder.

### Note

- Only images with in File List can be edited.
- Repeated editing may cause deterioration of image quality or increased file size.
- Some items are unavailable for images larger than 854 x 480 dots or 480 x 854 dots. Such images are automatically reduced to VGA (640 x 480) or Tall VGA (480 x 640) when saved.

### Adding a Frame

- 1 [My Picture] window ⇒ ⇒ **Edit image** ⇒ ⇒ **Frame** ⇒
- 2 **Select a frame** ⇒
  - To Change Frame ⇒
  - To Rotate Frame 180 Degrees ⇒
  - To Cancel Frame ⇒ ⇒ **Cancel** ⇒
- 3
- 4 ⇒ **YES or NO** ⇒

### Adding Stamps

- 1 [My Picture] window ⇒ ⇒ **Edit image** ⇒ ⇒ **Marker stamp** ⇒
- 2 **Select a marker stamp** ⇒
  - To Rotate Marker Stamp ⇒ ⇒ **90° to right, 90° to left or 180°** ⇒
  - To Enlarge/Reduce Marker Stamp ⇒ ⇒ **Scale up or Scale down** ⇒
  - To Cancel Marker Stamp ⇒
- 3 ⇒ **Select a position** ⇒
  - To Paste Another Marker Stamp ⇒ ⇒ **Select a marker stamp** ⇒
- 4
- 5 ⇒ **YES or NO** ⇒

### Pasting a Text Stamp

- 1 [My Picture] window ⇒ ⇒ **Edit image** ⇒ ⇒ **Character stamp** ⇒
- 2 **Enter text** ⇒



## To Edit Text

⇒ ⇒ *Character input* ⇒ ● ⇒ Enter text ⇒ ●

## To Change Text Color

⇒ ⇒ *Character color* ⇒ ● ⇒ Select a color ⇒ ●  
Press to toggle color palettes.

## To Change Font Type

⇒ ⇒ *Font type* ⇒ ● ⇒ *Gothic* or *Ming-Cho* ⇒ ●

## To Change Font Size

⇒ ⇒ *Font size* ⇒ ● ⇒ Select a font size ⇒ ●

3 ⇒ Select a position ⇒ ●

4 ●

5 ● ⇒ *YES* or *NO* ⇒ ●

## Cropping an Image

1 [My Picture] window ⇒ ⇒ *Edit image* ⇒ ● ⇒ *Trim away* ⇒ ●

2 Select a size ⇒ ● ⇒ to select an area ⇒ ●

3 ●

4 ● ⇒ *YES* or *NO* ⇒ ●

## Editing Videos

Clip the desired scenes from saved videos.

1 ⇒ *Data Folder* ⇒ ● ⇒ *Videos* ⇒ ● ⇒ Select a folder ⇒ ● ⇒ Select a video ⇒ ⇒ *Edit Video* ⇒ ●

2 ⇒ *Trim Videos* ⇒ ● ⇒ *Any size* or *500KB* ⇒ ● ▶

▶ To Start from Beginning



▶ To Start from a Halfway Point

● ⇒ At a desired point ⇒ ● ⇒

Video plays and clipping starts.

The video playback and clipping start at the same time.

3 ● to stop ⇒

Selected portion plays.

When *500KB* is selected, clipping stops automatically when the size of clipped video reaches 500 KB.

4 ● (twice) ⇒ *YES* ⇒ ●

## Note

- Only QCIF (176 x 144) or smaller videos with in File List can be clipped.

## More Features

### Advanced

#### Editing Files

- Retouch an Image
- Adjust Image Brightness
- Rotate an Image
- Change Image Size
- Correct Backlight
- Refresh Skin Tone

(▶ P. 11-15)





## Creating a Folder

- 1 ⇒ **Data Folder** ⇒ ⇒ Select a folder type ⇒

<Example>When My Picture is Selected



Folder List

- 2 ⇒ **Add folder** ⇒ ⇒ Enter folder name ⇒

### Tip

- Folders can only be created in handset Data Folder.

## Moving Files to a Different Folder

- 1 **[File List]** ⇒ Select a file ⇒ ⇒ **Move** ⇒

- ▶ **To Move Selected File**  
**Move this** ⇒ ⇒ Select a destination folder ⇒ ⇒ **YES** ⇒
- ▶ **To Move Multiple Files**  
**Move selected** ⇒ ⇒ Select a destination folder ⇒ ⇒ Select a file ⇒ (repeat to select another file) ⇒ ⇒ **YES** ⇒
- ▶ **To Move All Files in a Folder**  
**Move all** ⇒ ⇒ Select a destination folder ⇒ ⇒ **YES** ⇒

## More Features

### Advanced

#### Managing Folders

- Edit a Folder Name
- Delete a Folder
- Delete All Files in My Picture, Melody or Video Folder

▶ P. 11-15

#### Managing Files

- Edit a Title in My Picture File List
- Check Volume of Saved Files
- Edit a File Name
- Delete Files

▶ P. 11-16



# About Memory Card

Save files to memory cards. Still images and videos shot with handset camera can be saved directly to memory card. Data can be copied and moved between handset and memory card. Data on memory card can also be accessed from Data Folder.

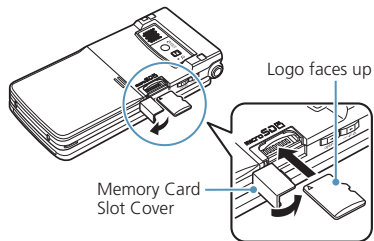
- Handset supports memory cards of up to 2 GB.
- Do not insert or remove memory cards when handset power is on.
- Insert memory cards properly. Otherwise, they cannot be used on handset.
- Do not affix stickers or labels to memory cards. As memory cards are very thin and precise mechanisms, even a thin sticker or label on a memory card may cause contact failure or destruction of data.
- Keep memory cards out of reach of infants who may accidentally swallow them or be injured.
- Do not remove a memory card or power off handset while writing and reading data with that memory card. It may cause data loss or malfunction.
- Access to memory cards may be unavailable when the battery level is low.

## Inserting & Removing a Memory Card

Turn handset power off before inserting or removing a memory card.

### Insertion

- 1 Open Slot Cover**
- 2 Insert memory card into Memory Card Slot until it locks**  
Insert gently with the printed logo facing up.



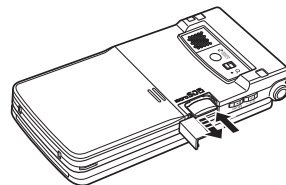
- 3 Close Slot Cover**

### Tip

- If appears in Display, there may be a contact failure. Remove and reinsert memory card.

### Removal

- 1 Press and release**  
Gently pull out memory card.



### Note

- Memory card may spring out.
- Memory card may break if inserted or removed with force.



# Managing Memory Cards

## Formatting a Memory Card

- Format memory cards on handset only. Memory cards formatted on another device or PC may not work.
- Formatting a memory card deletes all the data on it.

1 ⇒ **Tools** ⇒ ⇒ **microSD Manager** ⇒

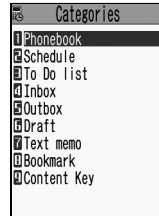
2 ⇒ **microSD format** ⇒ ⇒ Enter Security Code ⇒ ⇒ **YES** ⇒

### Note

- Do not remove memory card while formatting. Handset/memory card malfunction may occur.
- Make sure that there is no important data left on the memory card before formatting it.

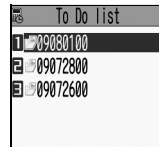
## Accessing Memory Card Data

1 ⇒ **Tools** ⇒ ⇒ **microSD Manager** ⇒



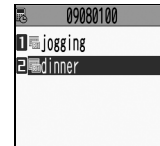
microSD Manager Window

2 Select a category ⇒



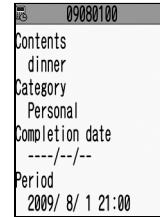
File List

3 Select a file ⇒



Data List

4 Select a data item ⇒



Data Details



## Copying Data between Handset & Memory Card

Following items can be copied to/from handset and memory card:

PIM Data	Phone Book entries, Schedule, To Do List, text memos, Inbox, Outbox, Draft, bookmarks, content keys
Files in Data Folder	Still images, My Pictograms, Flash®, melodies, videos, songs

## Copying Handset Data to Memory Card

Copy Phone Book entries, Schedule, messages, images, videos, etc.

<Example> Copy data in Data Folder to memory card

**1** [Data List] → → **Copy to microSD** →

### ▶ To Copy Selected Data

**Copy this** → (⇒ Select destination folder → )

### ▶ To Copy Multiple Data

**Copy selected** → (⇒ Select copy destination folder → ) → Select a data item → (repeat to select another data) → → **YES** →

### ▶ To Copy All Data

**Copy all** → → Enter Security Code → (⇒ Select copy destination folder → ) → **YES** →

## Tip

- When one Phone Book entry or Schedule event that is set as secret is copied to memory card, its secret setting is canceled.
- Files attached to messages may be deleted.
- You need to select a destination folder when copying data in My Picture folder.
- Data saved in Pre-installed folders of Data Folder cannot be copied.
- Content keys are copied collectively at one time.

## Copying Memory Card Data to Handset

### To Copy Images or Other Data to Handset

**1** → **Data Folder** → → **Select a folder type** → → **microSD** → → **Select a folder and sub-folder** → → **Select a data item** → → **Copy to phone** →

### ▶ To Copy Selected Data

**Copy this** →

### ▶ To Copy Multiple Data

**Copy selected** → → Select a data item → (repeat to select another data) → → **YES** →

### ▶ To Copy All Data

**Copy all** → → Enter Security Code → → **YES** →



# Managing Memory Cards

## To Copy PIM Data to Handset

- ⇒ **Tools** ⇒ ⇒ **microSD Manager** ⇒ ⇒ **Select a PIM data type** ⇒ ⇒ **Select a data item** ⇒ ⇒ **Copy & overwrite** ⇒
  - ▶ **To Copy Selected Files Copy & OW this** ⇒
  - ▶ **To Copy Multiple Files Copy & OW select** ⇒ ⇒ Select a file ⇒ (repeat to select another file) ⇒
  - ▶ **To Copy All Files Copy & OW all** ⇒
- Enter Security Code** ⇒ ⇒ **YES** ⇒ ⇒ **YES** ⇒ (⇒ **YES** or **NO** ⇒ )

### Note

- When copying memory card data to handset in overwrite mode, the corresponding data on handset is overwritten by the copied data.
- If the maximum storable number of items is reached when copying all items, copying stops at that point.

## Configuring Print Settings of Images

Specify which images on memory card to be printed and the number of prints, etc. in DPOF (Digital Print Order Format) settings so that the images can be printed by DPOF compatible printers or print service shops.

- ⇒ **Data Folder** ⇒ ⇒ **My Picture** ⇒ ⇒ **microSD** ⇒ ⇒ **DCIM** ⇒
- Select a folder** ⇒ ⇒ **Select a still image** ⇒ ⇒ **DPOF setting** ⇒
  - ▶ **To Specify Selected Images DPOF set One** ⇒
  - ▶ **To Specify Multiple Images DPOF set Choice** ⇒ ⇒ Select a still image ⇒ (repeat to select another image) ⇒
- Print** ⇒ ⇒ **Print Sheets** ⇒ ⇒ **Enter number of prints** ⇒
- a date** ⇒ ⇒ **ON** or **OFF** ⇒
- 

## More Features

### Advanced

#### Memory Card

- Check Available Memory Space of Memory Card
- Check & Repair Memory Card
- Delete Data on Memory Card
- Cancel Print Settings of Images

(▶ P. 11-16)



## Accessing Files

### Start Here

[File List] .....	P. 11-3
[Opened File] window .....	P. 11-3
[My Picture] window.....	P. 11-3
[Melody] window.....	P. 11-4
[Original Animation List] .....	P. 11-4
[Playlist] window.....	P. 11-5

## Opening Files

### Check File Information

[File List] / [Opened File] window (⇒  
Select a file) ⇒ ⇒ **Image info, Video  
info, Melody info, File property or  
Properties** ⇒ ●

### Change Order of Files

[File List] ⇒ ⇒ **Sort** ⇒ ● ⇒ Select a  
criterion ⇒ ●

### Set an Image to Appear in Standby

[File List] / [Opened File] window (⇒  
Select a file) ⇒ ⇒ **Set as display** ⇒ ●  
⇒ **Stand-by display** ⇒ ● (⇒ Select a  
layout ⇒ ● ⇒ Confirm preview ⇒ ●)  
 Set images to appear when making calls or  
sending messages.

### Set a Video to Appear in Standby

[File List] ⇒ Select a file ⇒ ⇒  
**Stand-by display** ⇒ ● ⇒ **YES** ⇒ ●

### Set a Melody/Video as Ringtone

[File List] / [Opened File] window (⇒  
Select a file) ⇒ ⇒ **Ring tone** ⇒ ● ⇒  
Select an item ⇒ ●  
 Only melodies can be set as ringtones from  
Opened File window.

## Viewing Images

### Play Animation from the Beginning

[My Picture] window ⇒ ⇒ **Retry** ⇒ ●

### Compose Four Images to Make One

[File List] ⇒ ⇒ **Composite image** ⇒ ●  
⇒ Select a position ⇒ ● ⇒ Select a folder  
⇒ ● ⇒ Select an image ⇒ ● ⇒ Repeat  
the same step to assign three other images  
to their respective positions ⇒ ⇒ ●  
 Only images in JPEG format can be used for  
creating composite images.  
 Copyright-protected images are unavailable.  
 Images saved on memory card cannot be  
used.  
 Some images cannot be used depending on  
their size.

### Set Display Size of an Image

[My Picture] window ⇒ ⇒ **Set image  
disp.** ⇒ ● ⇒ **Normal** or **Fit in display** ⇒  
●

### Edit Title of an Original Animation

[Original Animation List] ⇒ Select an  
animation ⇒ ⇒ **Edit title** ⇒ ● ⇒ Edit  
title ⇒ ●

### Cancel an Original Animation

[Original Animation List] ⇒ Select an  
animation ⇒ ⇒ **Release animation** ⇒  
● ⇒ **YES** ⇒ ●



# Advanced Features

## Playing Melodies

### Play All Melodies in the Same Folder Repeatedly

[Melody] window → → *Set repeat play* → ● → *ON* → ●

## Playing Videos

### Switch Display Format of File List

[File List] → → *List setting* → ● → *Title* or *Title+image* → ●

### Clear a Playlist

[Playlist] window → Select a playlist → → *Release playlist* → ● → *YES* → ●

## Editing Files

### Start Here

[My Picture] window..... P. 11-7

### Retouch an Image

[My Picture] window → → *Edit image* → ● → *Retouch* → ● → Select an effect → ● (three times) → *YES* or *NO* → ●

### Adjust Image Brightness

[My Picture] window → → *Edit image* → ● → *Brightness* → ● → to adjust brightness → ● (twice) → *YES* or *NO* → ●

### Rotate an Image

[My Picture] window → → *Edit image* → ● → *Rotate* → ● → *90° to right, 90° to left* or *180°* → ● (three times) → *YES* or *NO* → ●

### Change Image Size

[My Picture] window → → *Edit image* → ● → *Change size* → ● → Select a size → ● (three times) → *YES* or *NO* → ●

### Correct Backlight

[My Picture] window → → *Edit image* → ● → *Correct backlight* → ● (three times) → *YES* or *NO* → ●

### Refresh Skin Tone

[My Picture] window → → *Edit image* → ● → *Refresh skin tone* → ● (three times) → *YES* or *NO* → ●

## Managing Folders

### Start Here

[Folder List] ..... P. 11-9

### Edit a Folder Name

[Folder List] → Select a folder → → *Edit folder name* → ● → Edit folder name → ●

Only names of user-created folders can be edited.

### Delete a Folder

[Folder List] → Select a folder → → *Delete folder* → ● → Enter Security Code → ● → *YES* → ●

Only user-created folders can be deleted.

Files in the selected folder are also deleted.

When files that are set as wallpaper, ringtone, alarm tone, etc. are deleted, their settings are reset to default.



## Delete All Files in My Picture, Melody or Video Folder

[Folder List] → → **Delete all Image or Delete all** → → Enter Security Code → → **YES** →

When files that are set as wallpaper, ringtone, alarm tone, etc. are deleted, their settings are reset to default.

## Managing Files

### Start Here

[File List] .....P. 11-3

### Edit a Title in My Picture File List

[File List] → Select an image file → → **Edit title** → → Edit title →

Titles of files saved in Pre-installed folders cannot be edited.

### Check Volume of Saved Files

[File List] → → **Memory info** →

## Edit a File Name

[File List] → Select a file → → **Edit file name** → → Edit file name →

Names of files saved in Pre-installed folders cannot be edited.

## Delete Files

[File List] → Select a file → → **Delete** →

- To Select **Delete this**  
→ **Delete this** → → **YES** →
- To Select **Delete selected**  
→ **Delete selected** → → Select file →   
 (repeat to select another file) → → **YES** →
- To Select **Delete all**  
→ **Delete all** → → Enter Security Code  
→ → **YES** →

## Memory Card

### Start Here

[microSD Manager] window ..... P. 11-11  
 [File List] .....P. 11-11  
 [Data List] .....P. 11-11  
 [Data Details].....P. 11-11

### Check Available Memory Space of Memory Card

[microSD Manager] window, [File List] , [Data List] or [Data Details] → → **microSD info** →

### Check & Repair Memory Card

[microSD Manager] window → → **Check microSD** → → **YES** →

To cancel checking and repairing a memory card, press or .

Some memory cards may not be repairable.





## Delete Data on Memory Card

[File List] → Select a data item → →

**Delete** →

● To Select *Delete this*

→ *Delete this* →  → *YES* →

● To Select *Delete selected*

→ *Delete selected* →  → Select file →

(repeat to select another file) → →

*YES* →

● To Select *Delete all*

→ *Delete all* →  → Enter Security Code

→  → *YES* →

## Cancel Print Settings of Images

→ *Data Folder* →  → *My Picture* →

→ *microSD* →  → *DCIM* →  →

Select a folder →  → Select a still image

→ → *DPOF setting* →  → *DPOF set*

*One* or *DPOF set Choice* →  (→ Select an

image →  (repeat to select another

image) → → *Print OFF* or *All print OFF*

→

