

Safety Precautions







Read Safety Precautions before using handset.

- Observe precautions to avoid injury to self or others, or damage to property.
- SoftBank Mobile Corp. is not liable for any damages resulting from use of this product.

These labels show degree of risk from improper use; learn them before reading on:

 DANGER	Great risk of death or serious injury
 WARNING	Risk of death or serious injury
 CAUTION	Risk of minor injury or damage to property

These symbols signify prohibited/compulsory actions; learn them before reading on:

 Prohibited	Prohibited actions
 Do Not Disassemble	Disassembly prohibited
 Avoid Liquids Or Moisture	Exposure to liquids prohibited
 Do Not Use Wet Hands	Use with wet hands prohibited
 Compulsory	Compulsory actions
 Disconnect Power Source	Unplug from outlet

Handset, Battery, USIM Card, Desktop Holder, Charger (Optional Accessory) & Memory Card (Optional Accessory)

DANGER

Use specified Battery, Desktop Holder and Charger only.

Non-specified equipment use may cause Battery to leak, overheat, burst or ignite, and may cause Charger to overheat, ignite, malfunction, etc.



Compulsory

Do not disassemble, modify or solder handset or related hardware.

May cause fire, injury, electric shock or malfunction. Battery may leak, overheat, burst, ignite, etc.

Modifying handsets is prohibited by the Radio Law and subject to penalty.



Do Not Disassemble

Do not expose internal handset parts, Battery, Desktop Holder or Charger to liquids.

Do not let exposed internal parts remain wet; do not charge wet Battery. May cause overheating, electric shock, fire, injury or malfunction. Use only as directed.



Avoid Liquids Or Moisture

Do not charge, use, or leave handset or related hardware in extreme heat (fire, heat sources, direct sunlight, inside vehicles, etc.). Do not charge, leave, use, or be carrying handset or related hardware in a warm place or where heat collects, such as under a kotatsu (blanketed warming table) or electric blanket, next to a kairo (worn warming patch), etc. May cause warping/malfunction; Battery may leak, overheat, ignite or burst. Handset or related hardware may become hot to the touch, leading to burns or other problems.



Prohibited

Do not force Battery/Charger into handset. Check terminal/connector orientation; retry.

Battery may leak, overheat, burst, ignite, etc.



Prohibited

WARNING

Do not place handset, Battery, Desktop Holder or Charger in/on ovens, microwave ovens, pressure cookers, induction stoves or other cooking appliances.

Battery may leak, overheat, burst or ignite. Handset, Desktop Holder or Charger may overheat, emit smoke, ignite, malfunction, etc.



Prohibited

Keep handset off and Charger disconnected near gas stations or places with fire/explosion risk.

Handset use near petrochemicals or other flammables may cause fire/explosion; power off before using Osaifu-Keita[®] at gas stations (cancel IC Card Lock beforehand).



Compulsory

Do not drop/throw or subject to strong impact.

Battery may leak, overheat, burst or ignite, resulting in fire, electric shock, malfunction, etc.



Prohibited

For unusual sound/odor, smoke or other abnormality:

Continued use may cause fire, electric shock, etc.; grasp plug to disconnect Charger, power off, then remove Battery, being careful not to burn or injure yourself.



Compulsory

Keep liquid (water, pet urine, etc.) or conductive material (pencil lead, metal strip/jewelry, etc.) away from charging terminals and External Device Port.

May cause short-circuiting, resulting in fire, malfunction, etc.



Prohibited

Safety Precautions

Never charge Battery while handset is wet.

May cause fire, malfunction, burns, etc. due to electric shock or short-circuiting.



Prohibited

Do not expose handset or related hardware to hot air from dryers or other sources to dry them or for other purposes. Avoid saunas or hot water.

Battery may leak, overheat, burst or ignite. Handset, Desktop Holder or Charger may overheat, emit smoke, ignite, malfunction, etc.



Prohibited

CAUTION

Do not place handset or related hardware on unstable surfaces.

Handset or related hardware may fall, resulting in injury, malfunction, etc.; take added care when Vibration is set or while charging.



Prohibited

Keep handset and related hardware away from infants and pets.

Infants and pets may choke from swallowing handset or related hardware or be injured, etc.



Compulsory

For use of handset/related hardware by child, explain instructions and supervise use.

Misuse may cause injury or other problems.



Compulsory

Battery

DANGER

Read Battery label to confirm battery type; use/dispose of Battery accordingly.

Symbol on Label	Battery Type
Li-ion00	Lithium-ion

Do not dispose of Battery in fire.

Battery may leak, burst, ignite, etc.



Prohibited

Do not damage (nail, hammer, stomp, etc.) Battery or subject it to strong impact.

Battery may leak, overheat, burst, ignite, etc.



Prohibited

Keep wire or other metal objects away from Battery terminals. Do not carry/store Battery with conductive material (pencil lead, metal strip/jewelry, etc.).

Battery may leak, overheat, burst, ignite, etc.



Prohibited

If battery fluid gets in eyes, do not rub; rinse with clean water and consult a doctor immediately.

Eyes may be severely damaged.



Compulsory

WARNING

If battery fluid contacts skin or clothes, discontinue handset use and rinse with clean water immediately. May cause skin damage.



Compulsory

If charging continues even after specified Charging Time, stop it. Battery may leak, overheat, burst, ignite, etc.



Compulsory

For abnormal odor, excessive heat, discoloration or distortion, remove Battery, being careful not to burn or injure yourself. Avoid sources of flame.

Continued use may cause Battery to leak, overheat, burst, ignite, etc.



Compulsory

Do not let your pet bite Battery; if this occurs, do not use that Battery. Pet bites may cause Battery to leak, overheat, burst or ignite. May cause handset/related hardware to malfunction, or fire may result.



Compulsory



CAUTION

Do not dispose of an exhausted Battery with ordinary refuse.

Tape over Battery terminals before disposal. Take Battery to a SoftBank Shop, or follow the local disposal regulations.



Prohibited

Handset



WARNING

Do not use handset while driving or cycling.

Accidents may result. Phone use while driving or cycling is prohibited by law and subject to penalty; park legally beforehand.



Prohibited

Power off near electronic devices that employ high precision control systems or weak signals.

May cause electronic malfunctions or other problems. Take added care near these devices:
Hearing aids, implanted pacemakers/defibrillators and other electronic medical equipment; fire alarms, automatic doors and other automatic control devices.



Compulsory

Power off before boarding aircraft to avoid possible radio wave interference with aircraft operations.

If mobile phone use is allowed on board, follow airline instructions regarding handset use.



Compulsory

Users with a heart condition should adjust ringtone Vibration and Volume as needed.

May cause heart damage.



Compulsory

If thunder is audible while outdoors, power off; find cover.

There is a risk of lightning strike or electric shock.



Compulsory

Do not look into Infrared Port during Infrared transmissions.

Eyesight may be affected.



Prohibited

Do not shine Mobile Light in eyes.

May temporarily affect eyesight or startle, leading to accidents.



Prohibited



CAUTION

Do not use handset when it may affect a vehicle's electronic equipment.

Handset use inside vehicles may cause electronic equipment to malfunction, resulting in accidents.



Prohibited

For any skin irritation associated with use, discontinue use and consult a doctor.

Metal and other materials may cause skin irritation, rashes, or itchiness depending on your physical condition.



Compulsory

Keep handset away from magnetic items (e.g., magnetic cards).

Data on bank cards, credit cards, telephone cards, floppy disks, etc. may be lost.



Prohibited

Check there is ample space for Motion Control use; hold handset firmly and shake it gently.

Handset may slip, resulting in injury or breakage.



Prohibited

Do not swing handset by Strap.

May harm self or others; Strap may break, resulting in injury or handset malfunction/breakage.



Prohibited

Safety Precautions

Handset may become hot while in use, especially in high temperatures. Prolonged contact with skin may cause burns.



Compulsory

Always maintain some distance from Speaker while ringtones, music or other handset sounds play. Excessive volume may damage ears or hearing.



Prohibited

Keep fingers, Straps, etc. outside when opening/closing handset. May cause injury, breakage, etc.



Compulsory

Watch TV from a distance in good light.

Watching in poor light or too close may affect eyesight.



Compulsory

Moderate handset Volume when using Headphones.

Excessive volume may damage ears or hearing.



Compulsory

Desktop Holder & Charger (Optional Accessory)



WARNING

Do not cover/wrap Charger while charging.

Charger may overheat, resulting in fire, malfunction, etc.



Prohibited

Use only the specified voltage.

Non-specified voltages may cause fire, malfunction, etc.



Prohibited

- AC Charger: AC 100 V - 240 V Input
- In-Car Charger (use in negative earth vehicles only): DC 12 V/24 V Input

Do not use power adapters.

Transformer use may cause fire, electric shock or malfunction.

Unplug Charger for periods of disuse; grasp plug to disconnect.

May cause electric shock, fire or malfunction.



Disconnect Power Source

Use only the specified fuse for In-Car Charger.

Non-specified fuse may cause fire or malfunction. See In-Car Charger manual for details.



Compulsory

If liquid (water, pet urine, etc.) gets inside, grasp plug to disconnect it immediately.

May cause electric shock, smoke or fire.



Disconnect Power Source

To remove debris, grasp plug to disconnect Charger, then clean with a dry cloth.

Fire may result.



Compulsory

Do not use In-Car Charger in positive earth vehicles.

May cause fire or other problems. Use in negative earth vehicles only.



Prohibited

Plug Charger firmly into the outlet, keeping the plug, Charger terminals and Desktop Holder terminals away from conductive material (pencil lead, metal strip/jewelry, etc.).

May cause electric shock, short-circuiting, fire, etc.



Compulsory

Do not touch plug with wet hands.

May cause electric shock, malfunction, etc.



Do Not Use Wet Hands

Do not touch Charger if thunder is audible.

May cause electric shock or other problems.



Prohibited

Do not use Desktop Holder inside vehicles.

Extreme temperature or vibration may cause fire or malfunction.



Prohibited

Do not use Desktop Holder or Charger in high humidity or near water (in bathrooms, shower rooms, etc.).

May cause fire, electric shock or malfunction.



Prohibited

CAUTION

Grasp plug to disconnect Charger before cleaning.

May cause electric shock or other problems.



Disconnect
Power Source

Always grasp plug (not cord) to disconnect Charger.

Pulling plug by cord may damage cord and cause electric shock, fire, etc.



Compulsory

Do not subject Charger to strong impact while it is plugged in.

May cause malfunction or injury.



Prohibited

Do not touch charging terminals of Desktop Holder while it is connected to the outlet.

May cause burns.



Prohibited

Handset Use & Electronic Medical Equipment

This section is based on "Guidelines on the Use of Radio Communications Equipment such as Cellular Telephones and Safeguards for Electronic Medical Equipment" (Electromagnetic Compatibility Conference, April 1997) and "Guidelines to safeguard implanted medical devices against radio emissions from the use of radio equipment" (Ministry of Internal Affairs and Communications, January 2013).

WARNING

Persons with implanted pacemaker/defibrillator should keep handset more than 15 cm away.

Radio waves may interfere with implanted pacemakers or defibrillators.



Compulsory

Before using electronic medical equipment other than implanted pacemaker/defibrillator outside medical facilities, consult the vendor on radio wave effects.

Radio waves may interfere with electronic medical equipment.



Compulsory

Observe these rules inside medical facilities to avoid effects of radio waves on electronic medical equipment:

- Do not enter an operating room or an Intensive or Coronary Care Unit while carrying a handset.
- Keep handset off in hospitals.
- Even in lobbies or other places where mobile phone use is permitted, keep handset off near electronic medical equipment.
- Obey medical facility rules on mobile phone use.



Compulsory

If it may not be possible to keep handset 15 cm away from other persons (e.g., in a crowded situation where you cannot move freely), suspend signal-transmitting functions (e.g., by activating Offline Mode) or power off beforehand. Persons with implanted pacemaker/defibrillator may be near.

Radio waves may interfere with implanted pacemakers or defibrillators causing such devices to malfunction.



Compulsory

General Notes

General Use

- SoftBank Mobile Corp. is not liable for any damages resulting from accidental loss/alteration of handset/Memory Card files or settings. Keep a separate copy of contacts and other important information.
- Handset transmissions/TV reception may be disrupted inside buildings, tunnels or underground, or when moving into/out of such places; may affect calls or TV images.
- Use handset without disturbing others.
- Handsets are radios as stipulated by the Radio Law. Under the Radio Law, handsets must be submitted for inspection upon request.
- Handset use near landlines, TVs or radios may cause interference.
- For proper usage of Memory Card, read the manual beforehand.
- **Beware of eavesdropping.**
Because this service is completely digital, the possibility of signal interception is greatly reduced. However, some transmissions may be overheard.
- **Eavesdropping**
Deliberate/accidental interception of communications constitutes eavesdropping.
- Beware of harmful/malicious websites. Take added care when posting personal information.

- An export license may be required to carry handset into other countries if it is to be used by or transferred to another person. However, no such license is required when taking handset abroad for personal use on a vacation or business trip and then bringing it back. Export control regulations in the United States provide that an export license granted by the US government is required to carry handset into Cuba, Iran, North Korea, Sudan or Syria.

Handset & Hardware Care

- If handset is left with no Battery inserted or an exhausted one, data may be altered/lost. SoftBank Mobile Corp. is not liable for any resulting damages.
- Use handset within 5°C - 35°C (up to 40°C for brief periods in bathrooms, shower rooms, etc.) and 35% - 90% humidity.
- Avoid extreme temperature or direct sunlight.
- Handset/Battery may become warm during operation or while charging. This is normal.
- Warranty does not cover malfunctions resulting from misuse.
- Exposing Camera area to direct sunlight may damage Color Filter and affect image color.
- Battery may not charge properly if Port/terminals are obstructed by dust, debris, etc. Clean with a dry cloth, cotton swab, etc.
- When cleaning charging terminals of Desktop Holder, take care not to damage them or touch them with your fingers.
- Clean handset with a soft dry cloth. Alcohol/solvent use may fade color/print.
- Avoid scratching Display.
- Avoid heavy objects or excessive pressure. May cause malfunction or injury.
 - Do not sit on handset in back pants pocket.
 - Do not place heavy objects on handset inside handbags, packs, etc.
- Connect only specified products to External Device Port. Other devices may malfunction or cause damage.
- Always power off before removing Battery. If Battery is removed while saving data or sending mail, data may be lost, changed or destroyed.
- Do not power off while using Memory Card; may result in data loss or malfunction.
- When walking outside, moderate handset Volume to avoid accidents.
- Avoid covering Speaker while using handset.

Bluetooth® Function

SoftBank Mobile Corp. is not liable for any damages resulting from data/information leakage due to use of handset Bluetooth® function.

■ Precautions

The frequency band utilized by handset Bluetooth® function is shared with industrial, scientific or medical equipment, including household microwave ovens, and used by radio stations, amateur radio stations, etc. (hereafter "other radio stations").

- 1 Before using Bluetooth®, visually check that no other radio stations sharing the same frequency band are in use nearby.
- 2 Should interference occur between handset and other radio stations, move it to a different location or cancel Bluetooth® function immediately.
- 3 For additional information and support, contact **SoftBank Customer Support, General Information**: From a SoftBank handset, call toll free at 157. To call toll free from a landline/IP phone, see **P.9-1** "Customer Service".

Frequency Band

This radio station utilizes 2.4 GHz band with FHSS modulation. Maximum transmission radius is 10 meters. It is not possible for the radio station to avoid using the frequency band of a mobile unit identification apparatus.



Function Usage Requirement

USIM Card must be inserted to use handset.

Camera

- Mind etiquette when using Camera.
- Test Camera before shooting special moments.
- Do not use Camera in places where shooting is prohibited.
- Shot images may not be used/transferred without copyright holder (photographer) permission, except for personal use.

In-Call/Transmission Cautions

- During calls/transmissions, calling/transmission charges/fees apply even if other functions or operations are simultaneously in use.
- Transmissions involving JavaScript or Flash® may incur high charges.

Portrait Rights

Portrait rights protect individuals' right to refuse to be photographed or to refuse unauthorized publication/use of their photographs. Portrait rights consist of the right to privacy, which is applicable to all persons, and the right to publicity, which protects the interests of celebrities. Therefore, photographing others including celebrities and publicizing/distributing their photographs without permission is illegal; use Camera responsively.

Copyrights

Copyright laws protect sounds, images, computer programs, databases, other materials and copyright holders. Duplicated material is limited to private use only. Use of materials beyond this limit or without copyright holder permission may constitute copyright infringement, and be subject to criminal punishment. Comply with copyright laws when using images shot with Camera.

The software contained in handset is copyrighted material; copyright, moral right and other related rights are protected by copyright laws. Do not copy, modify, alter, disassemble, decompile or reverse-engineer the software; do not separate it from hardware in whole or part.

Electromagnetic Safety in Europe

For body-worn operation, this mobile phone has been tested and meets RF exposure guidelines when used with an accessory containing no metal and positioning the handset a minimum 15 mm from the body. Use of other accessories may not ensure compliance with RF exposure guidelines.

CE Declaration of Conformity

CE 0168

Hereby, Sharp Telecommunications of Europe Ltd, declares that 301SH is in compliance with the essential requirements and other relevant provisions of Directive 1999/5/EC. A copy of the original declaration of conformity for each model can be found at the following Internet address: <http://www.sharp.co.jp/k-tai/>

Battery Cautions

Use specified Battery or Charger only.

Non-specified equipment use may cause malfunctions, electric shock or fire due to battery leakage, overheating or bursting.

Do not dispose of an exhausted Battery with ordinary refuse; always tape over Battery terminals before disposal. Take Battery to a SoftBank Shop, or follow the local disposal regulations.

Charge Battery in ambient temperature 5°C - 35°C; Battery may leak/overheat and performance may deteriorate outside this range.

European RF Exposure Information

Your mobile device is a radio transmitter and receiver. It is designed not to exceed the limits for exposure to radio waves recommended by international guidelines. These guidelines were developed by the independent scientific organization ICNIRP and include safety margins designed to assure the protection of all persons, regardless of age and health.

The guidelines use a unit of measurement known as the Specific Absorption Rate, or SAR. The SAR limit for mobile devices is 2.0 W/kg and the highest SAR value for this device when tested at the ear was 0.409 W/kg*. As mobile devices offer a range of functions, they can be used in other positions, such as on the body as described in this User Guide**. In this case, the highest tested SAR value is 0.537 W/kg***. As SAR is measured utilizing the device's highest transmitting power the actual SAR of this device while operating is typically below that indicated above. This is due to automatic changes to the power level of the device to ensure it only uses the minimum level required to reach the network.

The World Health Organization has stated that present scientific information does not indicate the need for any special precautions for the use of mobile devices. They note that if you want to reduce your exposure then you can do so by limiting the length of calls or using a handsfree device to keep the mobile phone away from the head and body.

*The tests are carried out in accordance with international guidelines for testing.

**Please see "Electromagnetic Safety in Europe" (left) for important notes regarding body-worn operation.

***A method of measuring SAR when a mobile phone is used at positions other than at the ear was established in March 2010 through an international standard (IEC62209-2). MIC technical regulation was reported in October 2011 by the Information and Communications Council.

World Health Organization
<http://www.who.int/emf>

List of Specific Absorption Rates (SAR) for radio waves by 3G model
<http://www.softbank.jp/mobile/support/sar/>
(Japanese)

Headphone Signal Level

The maximum output voltage for Music Player function, measured in accordance with EN 50332-2, is 25.0 mV.

FCC Notice

- This device complies with part 15 of the FCC Rules. Operation is subject to the following two conditions:
 - (1) This device may not cause harmful interference, and (2) this device must accept any interference received, including interference that may cause undesired operation.
- Changes or modifications not expressly approved by the manufacturer responsible for compliance could void the user's authority to operate the equipment.

FCC Information to User

This equipment has been tested and found to comply with the limits of a Class B digital device, pursuant to Part 15 of the FCC Rules. These limits are designed to provide reasonable protection against harmful interference in a residential installation. This equipment generates, uses and can radiate radio frequency energy and, if not installed and used in accordance with the instructions, may cause harmful interference to radio communications.

However, there is no guarantee that interference will not occur in a particular installation; if this equipment does cause harmful interference to radio or television reception, which can be determined by turning the equipment off and on, the user is encouraged to try to correct the interference by one or more of the following measures:

1. Reorient/relocate the receiving antenna.
2. Increase the separation between the equipment and receiver.
3. Connect the equipment into an outlet on a circuit different from that to which the receiver is connected.
4. Consult the dealer or an experienced radio/TV technician for help.

FCC RF Exposure Information

Your handset is a radio transmitter and receiver. It is designed and manufactured not to exceed the emission limits for exposure to radio frequency (RF) energy set by the Federal Communications Commission of the U.S. Government.

The guidelines are based on standards that were developed by independent scientific organization through periodic and thorough evaluation of scientific studies. The standards include a substantial safety margin designed to assure the safety of all persons, regardless of age and health.

The exposure standard for wireless handsets employs a unit of measurement known as the Specific Absorption Rate, or SAR. The SAR limit set by the FCC is 1.6 W/kg. The tests are performed in positions and locations (e.g. at the ear and worn on the body) as required by the FCC for each model.

The highest SAR value for this model handset as reported to the FCC when tested for use at the ear is 0.40 W/kg, and when worn on the body in a holder or carry case, is 0.43 W/kg.

Body-worn Operation; This device was tested for typical body-worn operations with the back of the handset kept 1.5 cm from the body. To maintain compliance with FCC RF exposure requirements, use accessories that maintain a 1.5 cm separation distance between the user's body and the back of the handset. The use of beltclips, holsters and similar accessories should not contain metallic components in its assembly.

The use of accessories that do not satisfy these requirements may not comply with FCC RF exposure requirements, and should be avoided. The FCC has granted an Equipment Authorization for this model handset with all reported SAR levels evaluated as in compliance with the FCC RF emission guidelines. SAR information on this model handset is on file with the FCC and can be found under the Display Grant section of <http://www.fcc.gov/oet/ea/> after searching on FCC ID APYHRO00177.

Additional information on Specific Absorption Rates (SAR) can be found on the FCC website at <http://transition.fcc.gov/oet/rfsafety/>.

RF Exposure Information/Specific Absorption Rate* (SAR) Information

This mobile phone SoftBank 301SH meets the MIC's**** technical regulation for exposure to radio waves.

The technical regulation* established permitted levels of radio frequency energy, based on standards developed by independent scientific organizations through periodic and thorough evaluation of scientific studies.

The regulation employs a unit of measurement known as the Specific Absorption Rate, or SAR. The SAR limit is 2 watts/kilogram (W/kg)** averaged over ten grams of tissue.

The limit includes a substantial safety margin designed to assure the safety of all persons, regardless of age and health.

The value of the limit is equal to the international guidelines recommended by ICNIRP****.

The highest SAR value for this mobile phone is 0.557 W/kg when tested for use at the ear.

While there may be differences between the SAR levels of various phones and at various positions, all phones meet MIC's technical regulation.

Although the SAR is determined at the highest certified power level, the actual SAR of the phone during operation can be well below the maximum value.

Use at positions other than at the ear

This mobile phone may be used at positions other than at the ear. By using an accessory such as a belt clip holster that maintains a 1.5 cm separation with no metal (parts) between the body and the mobile phone, this mobile phone will comply with international guidelines for radio wave protection (*).

The World Health Organization has announced that "A large number of studies have been performed over the last two decades to assess whether mobile phones pose a potential health risk. To date, no adverse health effects have been established as being caused by mobile phone use."

For more information about SAR, see the following websites:

- Ministry of Internal Affairs and Communications (MIC)
<http://www.tele.soumu.go.jp/e/sys/ele/body/index.htm>
- Association of Radio Industries and Businesses (ARIB)
<http://www.arib-emf.org/index02.html> (Japanese)

*The technical regulation is provided in Article 14-2 of the Ministry Ordinance Regulating Radio Equipment.

**Provided for in "Radio-radiation protection guidelines," reported in 1997 by the Telecommunications Technology Council, Ministry of Posts and Telecommunications.

***A method of measuring SAR when a mobile phone is used at positions other than at the ear was established in March 2010 through an international standard (IEC62209-2). MIC technical regulation was reported in October 2011 by the Information and Communications Council.

****Ministry of Internal Affairs and Communications

*****International Commission on Non-Ionizing Radiation Protection

Standards of the Federal Communications Commission (FCC) of the U.S. Government and information from the E.U. are given as information relating to RF exposure. For details, see **P.10-10** "FCC RF Exposure Information" and **P.10-9** "European RF Exposure Information."

Water & Dust Resistance

Handset Water/Dust Resistance

Handset complies with IPX5 (former JIS protection level 5)¹ and IPX7 (former JIS protection level 7)² water protection standards as well as IP5X (JIS protection level 5)³ dust protection standard, with External Device Port Cover (hereafter "Port Cover") and Battery Cover closed firmly.

¹IPX5 compliant means that a handset continues to function as a phone after being subjected to a water jet (approximately 12.5 liters/min.) discharged from a nozzle (inner diameter: 6.3 mm), from all directions (approximately 3 m from handset) for at least 3 minutes.

²IPX7 compliant means that a handset continues to function as a phone after being gently submerged to the depth of 1 m in still tap water at room temperature, left there for approximately 30 minutes, then removed from it.

³IP5X compliant means that a handset continues to function as a phone and its safety is maintained after being agitated in a device containing dust of 75 µm or smaller in diameter for 8 hours, then removed from the device.

- Water/dust resistance may be affected under some circumstances. Warranty does not cover malfunctions resulting from misuse.
- Handset is compliant with IPX5, IPX7 and IP5X water/dust protection standards. However, ingress of dirt, sand, mud, metal powder, food, beverage, etc. may cause malfunction.

Handset Care

- Close Battery Cover and Port Cover firmly. Debris (hair, sand, fibers, etc.) trapped between gasket and base may allow ingress of liquid/dust.
- If handset is exposed to liquids with Port Cover or Battery Cover open, they may enter handset and cause electric shock or malfunction. Discontinue use, power off, then remove Battery.
- If handset is wet, wipe it with a dry cloth.
- Do not open/close Battery Cover or Port Cover with wet hands or while handset is wet.
- Handset is only water resistant against fresh/tap water between 5°C - 35°C.

Precautions

- Do not subject handset to soap, detergent, bath powder/oil, sea/pool/spa water, hot water, etc.
- Rinse off sea/pool water, beverage, dirt, sand, mud, etc. immediately; residue may cause malfunction if allowed to dry.
- Rinse off sand, dirt, etc. completely before use; any residue may damage handset causing malfunction.
- Do not soak handset in bath or pool; never use it in water (including opening/closing of handset and key operation).
- Handset is not resistant to water pressure. Avoid high-pressure water/shower (over 6 liters/min.) or water immersion.
- Do not expose handset to high humidity for long periods; avoid prolonged use in bath/shower rooms.
- Do not use in saunas. Avoid hot air from dryers or other sources.
- Use handset within 5°C - 35°C (up to 40°C for brief periods in bathrooms, shower rooms, etc.) and 35% - 90% humidity.
- Avoid extreme temperature (near stoves, inside refrigerators, etc.).
- Volume may be low when Mic, Earpiece or Speaker is wet; dry handset before use.

- Battery, Charger, Desktop Holder and optional accessories are not water or dust proof. Do not use in high humidity or near water (outdoors, in bathrooms, shower rooms, etc.); may cause fire, electric shock or malfunction. Do not bring into bathrooms, shower rooms, etc. even if you have no intention of using them.
- Do not subject handset to strong impact; do not poke Mic, Earpiece, Speaker, etc. with a sharp object; water/dust resistance may be affected.
- Avoid placing handset directly on sand. Sand may penetrate Earpiece, Speaker, etc., resulting in low volume.
- Sand, debris, etc. trapped in hinge may cause excessive friction or noise when opening/closing handset.
- Touchscreen may not respond properly if wet or touched with wet fingers.
- Do not move handset directly from a cold place to a warm humid place; condensation may occur. Should this happen, dry handset naturally at room temperature.
- Handset does not float on water.
- Keep handset out of heavy rain.
- Do not let liquid-exposed handset remain wet; exposure to cold may freeze liquid causing malfunction.
- Damaged Battery Cover or Port Cover affects water/dust resistance; contact a SoftBank Shop.

Charging Cautions

- Never charge Battery while handset is wet; may cause fire, malfunction or burns due to electric shock or short circuiting. Be sure to dry handset before use.
- Close Port Cover firmly after charging from External Device Port. Use Desktop Holder to prevent ingress of water and dust from External Device Port.
- Do not touch Desktop Holder or Charger with wet hands. Electric shock may occur.
- Do not use Desktop Holder or Charger in rooms where water is regularly in use (kitchens, bathrooms, shower rooms, etc.); may cause fire or electric shock.

Care & Maintenance

- Proper care of Port Cover gasket and Battery Cover gasket (for battery housing area) is crucial for continued handset water/dust resistance. Observe the following:
 - Do not remove or damage gasket. Keep it clean.
 - Do not insert a sharp object into Port Cover/Battery Cover gap; may damage gasket and allow ingress of water/dust.
 - If Port Cover gasket or Battery Cover gasket (for battery housing area) is damaged or deformed, contact a SoftBank Shop for gasket replacement.
- To maintain water/dust resistance, it is recommended to replace related parts every 2 years regardless of their condition. Customer-requested parts replacement incurs fees and requires handset submission. For details, contact a SoftBank Shop or SoftBank Customer Support, General Information (P.9-1).

Cleaning Handset

Washing Handset

Wipe off dirt, sand, beverage, etc., gently with a cloth. Then with Battery Cover closed, hold handset approximately 10 cm below faucet or shower head and wash with low-pressure tap water (6 liters/min. or lower) at room temperature (5°C - 35°C). Wash with your hands, taking care not to open Battery Cover and Port Cover; do not use a brush or sponge. Dry handset before use; after drying it well, power on.

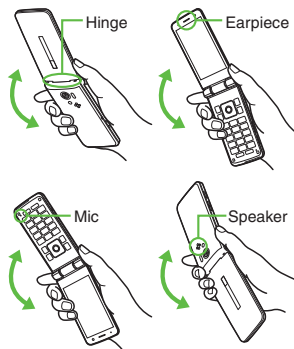
- Before washing handset, make sure that Battery Cover and Port Cover are closed firmly.
- Do not use a washing machine or ultrasonic cleaner.
- Do not place handset in a microwave oven to dry it. Battery/handset may leak, burst, overheat or ignite; may cause malfunction, accident or injury.
- Do not dry handset using extreme heat (hot air from dryers, etc.); may cause warping, discoloration or damage.

Drying Handset

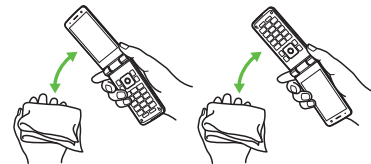
Dry these parts when exposed to water:

Hinge	Earpiece
Mic	Speaker

- 1 Wipe handset surface with dry cloth
- 2 Holding hinge firmly by its sides, shake handset about 20 times



- 3 Pat against dry cloth to remove moisture from grooves



- 4 Leave handset on dry cloth for approximately 2 - 3 hours at room temperature

Do Not Use Wet Handset

- Voice quality may be affected, or moisture may transfer to clothes, bag, etc.
- Moisture may short-circuit External Device Port.
- Exposure to cold may freeze moisture; may cause malfunction.