



201F User Guide

201F User Guide Contents

Introduction	1
Introduction.....	3
Getting Started	
Package Contents.....	6
Parts & Functions.....	6
USIM Card Installation.....	8
SD Card Installation.....	10
Battery Installation.....	13
Charging Battery.....	15
Power On/Off.....	16
Touchscreen Operations.....	17
Basic Operations	
Basic Operations.....	20
Handset Phone Number.....	21
Mobile Manners.....	21
Text Entry.....	22
Google Account.....	24
Google Play™.....	25
Security Codes.....	26
USIM PIN.....	27
Screen Lock.....	28
Software Updates.....	28
Handset Interface	
Home Screen Basics.....	32
Status Bar.....	32
Notifications Window.....	34
Phone	
Calling.....	36
Optional Services.....	37
Address Book.....	42
Messaging & Browser	
Messaging.....	44
Using NX! Mail.....	44
Creating/Sending Mail/SMS.....	45
Creating/Sending Gmail.....	47
Internet Mail Settings.....	48
Web Browsing.....	48
Camera	
Imaging.....	52
Music & Images	
Music Files.....	56
Image Files.....	56
Connectivity	
Wi-Fi.....	58
Bluetooth®.....	58

Global Services

Calling Outside Japan.....	60
----------------------------	----

Settings

About Settings.....	62
Wi-Fi Settings.....	63
Sound and Vibration Settings.....	64
Application Settings.....	65
Accounts & Sync Settings.....	65

Appendix

Specifications.....	68
Customer Service.....	68

Safety Precautions

Safety Precautions.....	70
Important Product Information.....	76
Waterproofing/Dustproofing.....	80
General Notes.....	82
RF Exposure Information/Specific Absorption Rate (SAR) Information.....	84

Introduction

Thank you for purchasing SoftBank 201F.

Before You Begin

- SoftBank 201F is referred to as "handset" in this guide.
- Read "Safety Precautions" and this guide thoroughly beforehand for proper usage.
- Accessible services may be limited by contract conditions.
- Unauthorized copying of any part of this guide is prohibited.
- Guide content subject to change without prior notice.
- Contact SoftBank Customer Support, General Information if you find inaccuracies.

Guide Usage Notes


- Most operation descriptions are based on default settings.
- Unless noted otherwise, descriptions are for Home Screen.
- Some operation descriptions may be omitted.
- In this guide and on handset, "abroad" means "outside Japan" with regard to handset/service usage.
- In this guide, microSD/microSDHC/microSDXC Card is referred to as "SD Card."

Screenshots & Key Labels

Screenshots and Key labels are provided for reference only. Actual handset windows, menus, etc. may differ in appearance.

Accessing Guide on Handset

Access this Guide on handset via Guide icon in Home Screen or via Guide indicator on Status Bar. Guide indicator appears on Status Bar by default. To hide Guide indicator:

Drag down Status Bar → Tap here for Guide →  →

Indicator → off → Back

- Guide usage information and confirmation for automatic updates appear at initial startup. Follow onscreen instructions.

Getting Started

Package Contents.....	6
Parts & Functions.....	6
USIM Card Installation.....	8
SD Card Installation.....	10
Battery Installation.....	13
Charging Battery.....	15
Power On/Off.....	16
Touchscreen Operations.....	17

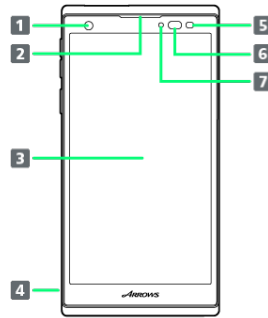
Package Contents

Package Contents

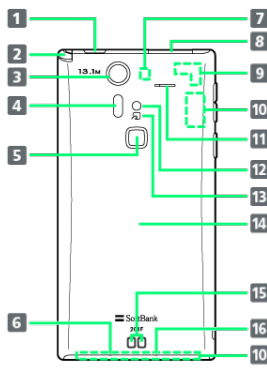
- Handset (SoftBank 201F)
- Battery (FMBAB1)
- Desktop Holder (FMEAA1)
- AC Charger (FMCAB1)
- microSD Card (Complimentary Sample)
- クイックスタート (Japanese)
- お問い合わせ (Japanese)
- Handset Warranty (Japanese)
- AC Charger Warranty (Japanese)

Parts & Functions

Front/Top/Bottom

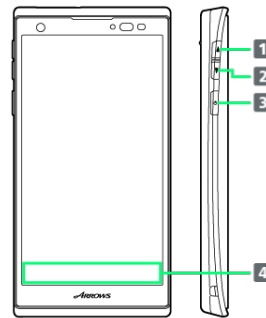


Part	Description
1 Internal Camera	Photograph your own face, etc.
2 Earpiece	Hear the other party's voice here
3 Touchscreen	Tap, Swipe/Flick, etc.
4 Strap Hole (Side)	Attach strap here
5 RGB Sensor	Detects surrounding brightness to automatically adjust display or backlight
6 Proximity Sensor	Prevents Touchscreen misoperation during call
7 Notification Lamp	Lights for charging/Flashes for incoming transmissions



Part	Description
1 Earphone Port	Connect earphone
2 TV/FM Transmission Antenna	Receive One Seg (Digital TV) signal/For FM Transmitter
3 External Camera	Capture images
4 Infrared Port	For infrared transmission
5 Fingerprint Sensor	For fingerprint recognition, etc.
6 Mic	Speak here for calls
7 Wi-Fi/Bluetooth Antenna	Internal antenna for Wi-Fi and Bluetooth® function
8 External Device Port	Connect Micro USB Cable/MHL Cable
9 GPS Antenna	Internal antenna for GPS function
10 Internal Antenna Area	For handset transmissions
11 Speaker	Emits tones, music, sounds, the other party's voice for handsfree calls, etc.
12 Mobile Light	Use as camera flash
13 FeliCa Logo	Hold to reader/writer to use NFC/Osaifu-Keitai®
14 Battery Cover	Access SD/USIM Card or Battery
15 Charging Terminal	For charging by Desktop Holder
16 Temperature/Humidity Sensor	Detects surrounding temperature and humidity

Handset Keys



Part	Description
1 ▲	Increase Volume
2 ▼	Decrease Volume
3 ⏻	Toggle Display Backlight on/off Long Press for power on/off
4 Navigation Bar	Onscreen navigation buttons (⏪ / 🏠 / ☰)

USIM Card Installation

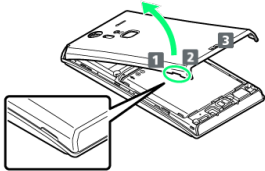
USIM Card IC chip contains customer and authentication information, including handset number.

Inserting USIM Card

Power off first.

1

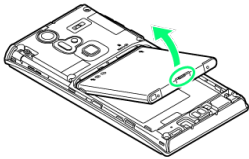
Remove Battery Cover



- Use notch (1) and release tabs inside of Battery Cover in the order of **1** - **3**, then remove Battery Cover as shown.

2

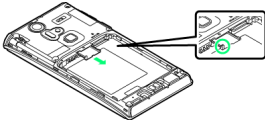
Remove Battery



- Use tab (1) to lift Battery.

3

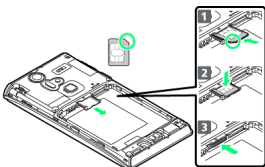
Slide out Tray



- Use tab (1) to slide Tray.
- Do not pull Tray over the guide-line.

4

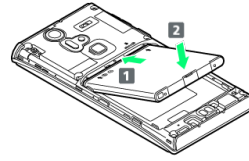
Insert USIM Card



- Position notch as shown (**1**), place USIM Card with IC chip up onto Tray (**2**), then slide in USIM Card (**3**).

5

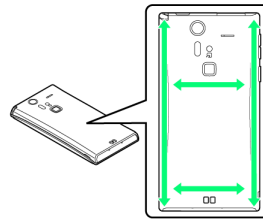
Insert Battery



- With (+) (-) printed side facing up, align Battery terminals with handset terminals (**1**), then lower (**2**).

6

Close Battery Cover



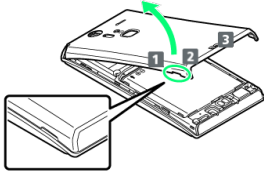
- Align Battery Cover with handset, then firmly press down along arrows. Check there are no gaps.

Removing USIM Card

Always power off first.

1

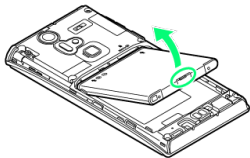
Remove Battery Cover



- Use notch (○) and release tabs inside of Battery Cover in the order of **1** - **3**, then remove Battery Cover as shown.

2

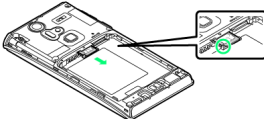
Remove Battery



- Use tab (○) to lift Battery.

3

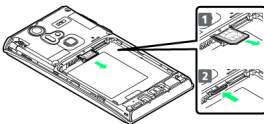
Slide out Tray



- Use tab (○) to slide Tray.
- Do not pull Tray over the guide-line.

4

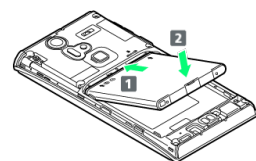
Remove USIM Card



- Slide USIM Card out to remove (**1**), then push back Tray (**2**).

5

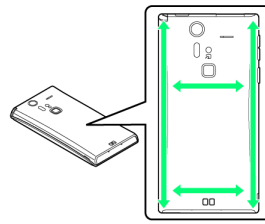
Insert Battery



- With (+) (-) printed side facing up, align Battery terminals with handset terminals (**1**), then lower (**2**).

6

Close Battery Cover



- Align Battery Cover with handset, then firmly press down along arrows. Check there are no gaps.

SD Card Installation

Handset accepts an SD Card up to 64 GB. Some SD Cards may not operate properly.

Memory and SD Card

Use System memory and Internal storage in handset and SD Card as follows.

Type	Description
System Memory	System data and applications are installed
Internal Storage	Saves images, music, mail attachment, application data ¹ ; Connect a PC for data transmission
SD Card	Save captured images/video ; Connect a PC for data transmission

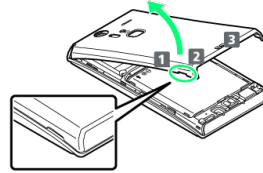
¹ Location for saving data varies by application settings.

Inserting SD Card

Always power off first.

1

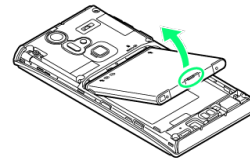
Remove Battery Cover



- Use notch (1) and release tabs inside of Battery Cover in the order of **1** - **3**, then remove Battery Cover as shown.

2

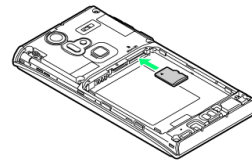
Remove Battery



- Use tab (1) to lift Battery.

3

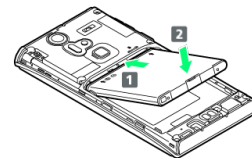
Insert SD Card



- Slide in SD Card as shown.
- Do not insert other objects.

4

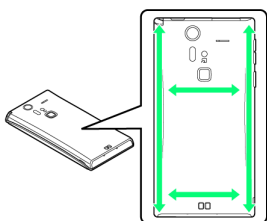
Insert Battery



- With (+) (-) printed side facing up, align Battery terminals with handset terminals (**1**), then lower (**2**).

5

Close Battery Cover



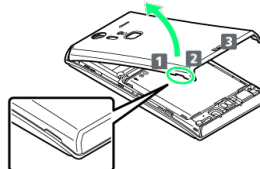
- Align Battery Cover with handset, then firmly press down along arrows. Check there are no gaps.

Removing SD Card

Always power off first.

1

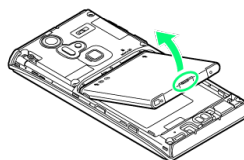
Remove Battery Cover



- Use notch (1) and release tabs inside of Battery Cover in the order of 1 - 3, then remove Battery Cover as shown.

2

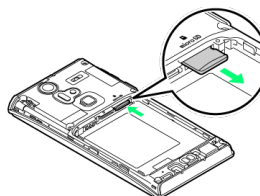
Remove Battery



- Use tab (1) to lift Battery.

3

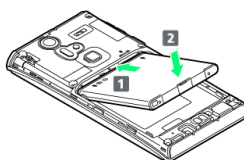
Remove SD Card



- Gently push in SD Card and release it; SD Card pops out. Carefully remove without bending.

4

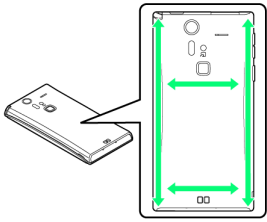
Insert Battery



- With (+) (-) printed side facing up, align Battery terminals with handset terminals (1), then lower (2).

5

Close Battery Cover



- Align Battery Cover with handset, then firmly press down along arrows. Check there are no gaps.

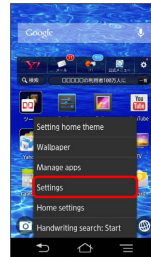
Formatting SD Card

When using a new SD Card for the first time, format it on handset before trying to save files, etc.

- Format Card deletes all SD Card files, even those created on other devices.
- Charge Battery or install a charged Battery beforehand.

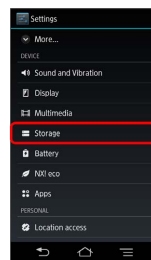
1

In Home Screen,   Settings



2


Storage



3

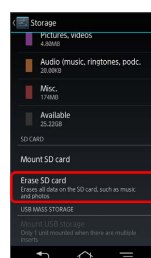
Unmount SD card  OK



 Menu item changes from "Unmount SD" card to "Mount SD card".

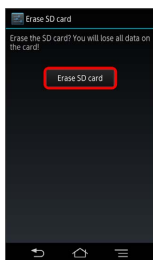
4

Erase SD card



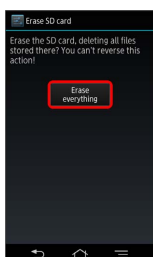
5

Erase SD card



6

Erase everything



Handset erases all SD Card files.

· Authenticate if **Security unlock preference** is set.

! Important SD Card Usage Notes

Back Up Your Files

SoftBank Mobile Corp. is not liable for any damages resulting from accidental loss/alteration of information. Keep a copy of contacts, etc. in a separate place. Never power off or remove Battery while files are being accessed.

Low Battery Warning

SD Card may not read/write files correctly if Battery is low.

Data transfer to microSDXC Card

Handset supports microSDXC Cards. Do not insert microSDXC Card in non-supporting device for data transmission. Data in the microSDXC Card may be damaged.

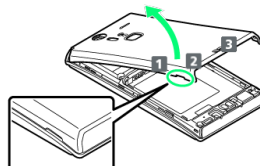
Battery Installation

Always power off before removing Battery.

Inserting Battery

1

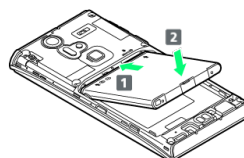
Remove Battery Cover



· Use notch (1) and release tabs inside of Battery Cover in the order of 1 - 3, then remove Battery Cover as shown.

2

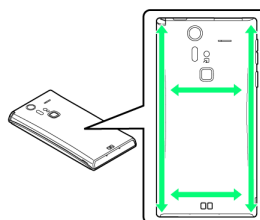
Insert Battery



· With (+) (-) printed side facing up, align Battery terminals with handset terminals (1), then lower (2).

3

Close Battery Cover

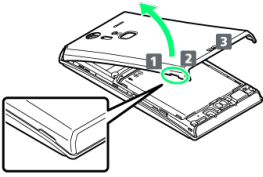


· Align Battery Cover with handset, then firmly press down along arrows. Check there are no gaps.

Removing Battery

1

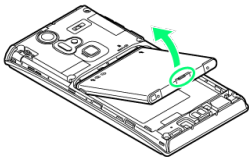
Remove Battery Cover



- Use notch (O) and release tabs inside of Battery Cover in the order of **1** - **3**, then remove Battery Cover as shown.

2

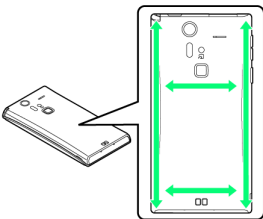
Remove Battery



- Use tab (O) to lift Battery.

3

Close Battery Cover



- Align Battery Cover with handset, then firmly press down along arrows. Check there are no gaps.

! Battery Cautions

Battery Care

Charge Battery at least once every six months; uncharged Battery may die or affect files/settings.

Bulges

Depending on usage, bulges may appear near end of battery life; this does not affect safety.

Replacing Battery

Replace Battery if operating time shortens noticeably.

Cleaning Handset Terminals

Clean device handset terminals with dry cotton swabs.

Lithium-ion Battery

This product requires a lithium-ion battery. Lithium-ion batteries are recyclable. To recycle a used lithium-ion battery, take it to any shop displaying the recycling symbol.

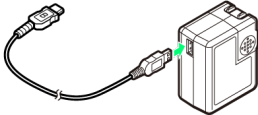
Charging Battery

Battery must be inserted in handset to charge it.

Desktop Holder

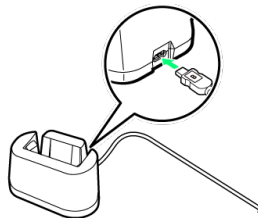
Use Desktop Holder and AC Charger FMCAB1 (USB Cable and AC Charger).

1 Insert USB plug of USB Cable into AC Charger USB port



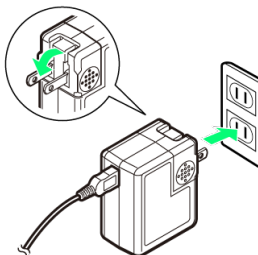
- Confirm USB plug and USB port orientation.

2 Insert Micro USB plug of USB Cable into Desktop Holder Micro USB port

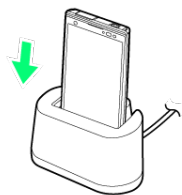



- Insert Micro USB plug with print side facing up.

3 Extend blades and plug AC Charger into AC outlet



4 Place handset in Desktop Holder



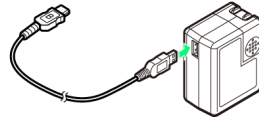
 Notification Lamp illuminates while charging.

- Notification Lamp goes out when Battery is full. Remove handset from Desktop Holder. Unplug AC Charger and retract blades.

AC Charger

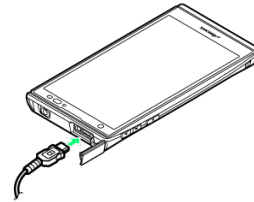
Use AC Charger FMCAB1 (USB Cable and AC Charger).

1 Insert USB plug of USB Cable into AC Charger USB port



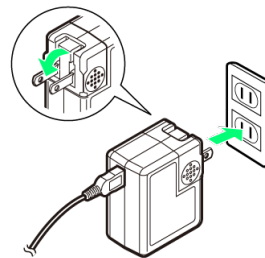
- Confirm USB plug and USB port orientation.


2 Open Port Cover and connect Micro USB plug of USB Cable



- Insert Micro USB plug with print side facing up.

3 Extend blades and plug AC Charger into AC outlet



 Notification Lamp illuminates while charging. Notification Lamp goes out when Battery is full.

4 Unplug AC Charger and retract blades

5 Disconnect USB Cable from handset and close Port Cover


Handset Use while Charging

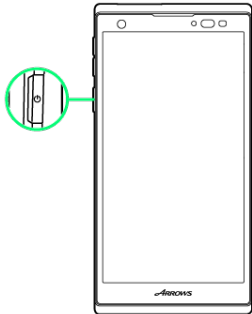
Charging time may take longer or charging may not be completed.


Power On/Off

Power On

1

 (Long Press)




 Cancel Screen Lock window appears.

2

Drag  to 




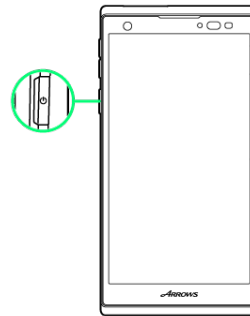
 Screen Lock is canceled.

· Initial setup menu opens before Home Screen appears after powering on for the first time.

Power Off

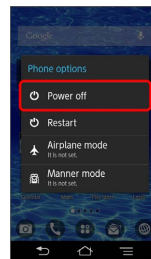
1

 (Long Press)



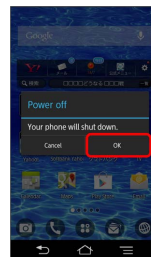
2


Power off



3

OK



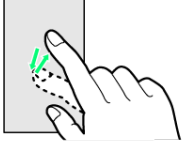
 Handset shuts down.

Touchscreen Operations

Touch Display to select menu items, open functions, scroll pages, etc.

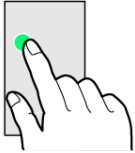
Tap

Tap item or key to open or execute corresponding function/operation.



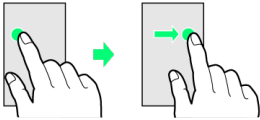
Touch & Hold

Touch item for 1+ seconds to move icons, open menus, etc.



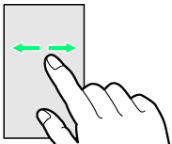
Drag

Drag item (e.g., Touchscreen unlock slider) to move it.



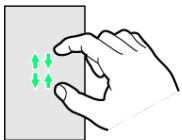
Swipe/Flick

Swipe/Flick to toggle sheets, pages, etc.



Pinch/Spread

Pinch/Spread to zoom in or out on images, etc.



Basic Operations

Basic Operations.....	20
Handset Phone Number.....	21
Mobile Manners.....	21
Text Entry.....	22
Google Account.....	24
Google Play™.....	25
Security Codes.....	26
USIM PIN.....	27
Screen Lock.....	28
Software Updates.....	28

Basic Operations

Home Screen & Launcher

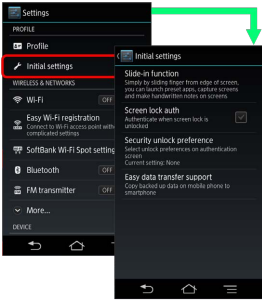
Home Screen top sheet appears at power on. Most handset operations start from Home Screen sheets or Launcher pages.



Handset Navigation

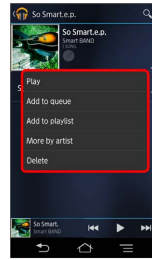
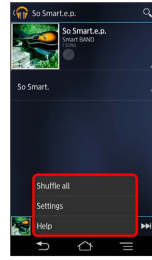
Tap menu items, icons, onscreen key, etc. to open assigned items.

- Press to go back or escape.



Menu Operations

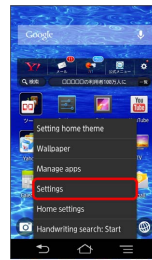
Tap for options. Alternatively, Touch & Hold Display for settings.



Handset Settings

In Home Screen, to customize settings.

- If confirmation appears, follow onscreen instruction.



Handset & Display Orientation

In most cases, Display orientation changes with handset orientation.

- Some application contents may not change with handset orientation.



Capturing Screens

Long Press and at the same time.

- Check captured screens in Gallery album etc.
- Capturing is not available on some application screens.


Handset Phone Number



My Phone Number

1

In Home Screen,   Settings  Profile



 Handset phone number appears.

· Alternatively, in Home Screen,   (NX! Contact).


Mobile Manners

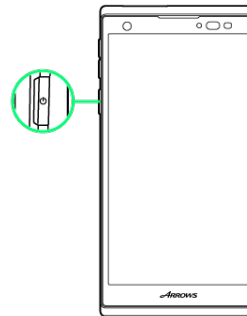
Manner Mode

Cancel most handset sounds to avoid disturbing others around you.


· Camera shutter, video recording tones, etc. sound even in Manner mode.


1

 (Long Press)



2

Tap the Manner mode to set  OK

 Manner mode is set.

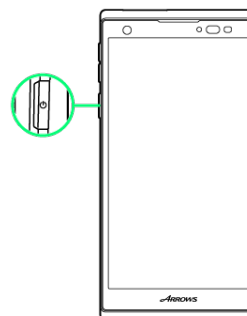
· Long Press  and Tap the set Manner mode again to cancel.

Airplane Mode

Cancel all handset communication.


1

 (Long Press)



2

Airplane mode  OK



 Airplane mode is set.

· Long Press  and Tap **Airplane mode** again to cancel.

Text Entry

Keyboards

Use onscreen keyboards for text entry. In Numeric keypad, multiple characters are assigned to each key. In QWERTY keypad, a single character is assigned to each key.

- In any keyboard, Tap  for QWERTY keypad/Numeric keypad to switch keyboards.
- To use handwritten input, Tap .

Numeric Keypad Layout

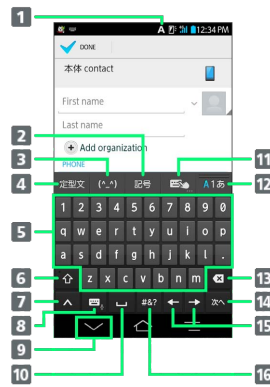
- Keypad layout may vary by application.



- 1 Current entry mode
- 2 Symbol list
- 3 Smiley list
- 4 Phrase/Pictogram list
- 5 Back to previous state
- 6 Move cursor
- 7 Toggle keyboards; Touch & Hold for voice input
- 8 Tap for Password manager, NX!input & ATOK Settings, etc.
- 9 Hide keyboard
- 10 Toggle handwritten input/keyboard input
- 11 Toggle entry mode
- 12 Delete character before cursor
- 13 Enter space
- 14 Line feed/move to next entry area/execute function or confirm text entry
- 15 Text entry





QWERTY Keypad Layout

- Keypad layout may vary by application.

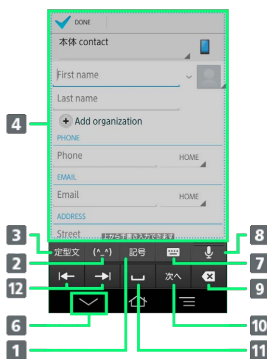
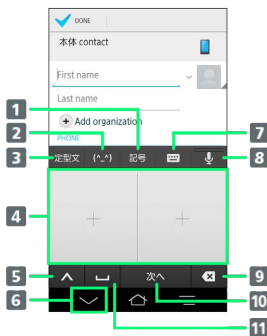


- 1 Current entry mode
- 2 Symbol list
- 3 Smiley list
- 4 Phrase/Pictogram list
- 5 Text entry
- 6 Toggle uppercase/lowercase
- 7 Tap for Password manager, NX!input & ATOK Settings, etc.
- 8 Toggle keyboards; Touch & Hold for voice input
- 9 Hide keyboard
- 10 Enter space
- 11 Toggle handwritten input/keyboard input
- 12 Toggle entry mode
- 13 Delete character before cursor
- 14 Line feed/move to next entry area/execute function or confirm text entry
- 15 Move cursor
- 16 Toggle text/Symbol entry

Handwritten Input Layout

Touch & Hold  /  then Slide to  /  to open handwritten input pad.

· Keypad layout may vary by application.

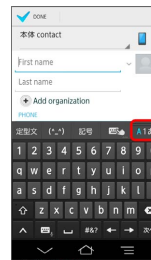



- 1 Symbol list
- 2 Smiley list
- 3 Phrase/Pictogram list
- 4 Handwriting area
- 5 Tap for character code input, phrase input, ATOK direct, Register Words, NX!input & Settings, etc.
- 6 Hide keyboard
- 7 Return to keyboard
- 8 Start voice input
- 9 Delete character before cursor
- 10 Line feed/move to next entry area/Execute function or confirm text entry
- 11 Enter space
- 12 Move cursor

toggling Text Entry Modes

1

Tap 



 Entry mode changes.

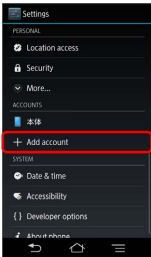
Google Account

Create a Google Account to use Google services. A Google Account is required to fully use some services and applications/functions.

Creating a Google Account

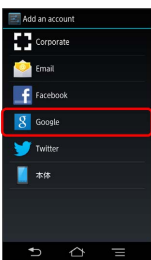
1

In Home Screen,   Settings  Add account



2

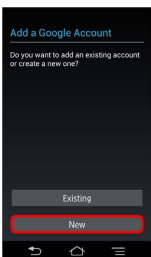
Google



 Add a Google Account appears.


3

New



4


Follow onscreen instructions

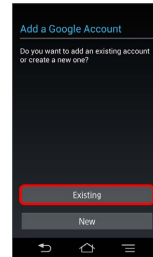
 A Google Account is added.


Signing in to a Google Account

If an application requires a Google Account, Google sign in appears. Sign in to use the application.



1

In Add a Google Account screen, 



 Google Account sign in appears.


2

Enter mail address and password  



3

Follow onscreen instructions

 You are signed in to your Google Account.

Google Account Cautions

Do not forget your Google Account ID and Password.

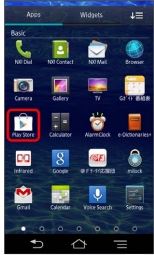
Google Play™


Download applications in Google Play. Sign in to your Google Account beforehand.

Installing Free Applications

1

In Home Screen,    (Play Store)



 Google Play opens.

- If confirmation appears, follow onscreen instructions.

2

Tap application  **Install**  **Accept & download**


 Application downloads and installs.

Purchasing Applications

1

In Home Screen,    (Play Store)



 Google Play opens.

- If confirmation appears, follow onscreen instructions.

2

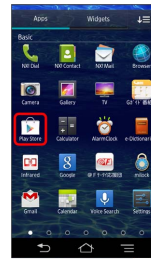
Tap pay-for application  Tap price  Follow onscreen instructions

 Application downloads and installs.

Updating Installed Applications

1






In Home Screen,    (Play Store)




 Google Play opens.

- If confirmation appears, follow onscreen instructions.

2

  **My Apps**  Tap application  **Update** 
Accept & download

 Application downloads and installs.

- If confirmation appears, follow onscreen instructions.

Purchased Applications

Payment

Pay once. Re-downloads of uninstalled applications are free of charge.




Installations on Other Android Devices

Install same application on other Android devices under same Google Account at no added cost.




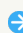
+ Application Operations

Requesting Refunds

Refunds are possible within a limited time. Requesting a refund deletes the application and cancels the invoice. Request one refund per application.

In Google Play,   **My Apps**  Tap application  **Refund**

Automatic Application Updates

In Google Play,   **My Apps**  Tap application  **Allow automatic updating** (Show)

- Automatic update is not available for some applications.

! Google Play Caution

Installing Applications

Download and install applications on this handset via Google Play (developed by Google Inc.) at your own risk. SoftBank Mobile Corp. is not responsible for user installed application content (quality, reliability, legality, appropriateness, accuracy, etc.) or malfunctions installed applications may cause (due to viruses, etc.).

Purchasing Applications

Purchase applications via Google Play at your own risk. SoftBank Mobile Corp. is not responsible for transactions between users and third party publishers.

Security Codes

Code Types

Some functions/services require these codes for use.

- Do not reveal Security Codes. SoftBank Mobile Corp. is not liable for misuse or damages.
- If you forget Security Codes, contact us for recovery. For more information, see [SoftBank Mobile Website \(http://mb.softbank.jp/en/#pagetop\)](http://mb.softbank.jp/en/#pagetop).

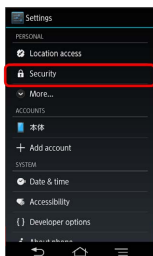
Types	Details
Center Access Code	4-digit code in service contract: Change services, use Optional Services via landlines, or set call restrictions
Handset Security Code	User settable: Use/change some handset functions/settings Alternatively, use Pattern, Password, Fingerprint or Face recognition to authenticate

Setting Security Code

Set Handset Security Code to cancel Screen Lock or authenticate.

1

In Home Screen,   



2

Security unlock preference  Security code



· When Security release method has been already set, authenticate.

3

Enter Security Code  Continue  Enter Security Code again  OK

 Security Code is set.

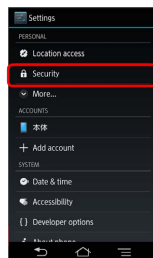
USIM PIN

9999 by default; enable USIM Card lock to restrict handset use.

Enabling USIM Card Lock

1

In Home Screen,   



2

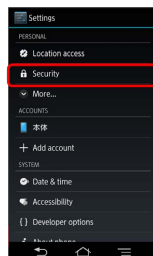
Set up USIM/RUIM card lock  Lock USIM card  Enter USIM PIN  OK

 PIN is enabled.








Changing USIM PIN


1

In Home Screen,   



2

Set up USIM/RUIM card lock  Change USIM PIN  Enter PIN  OK  Enter New PIN  OK  Enter New PIN again  OK

 PIN is changed.

PIN Cautions


Entering PIN incorrectly three times activates PIN Lock. Enter PUK (Personal Unblocking Key) to unlock. Entering PUK incorrectly ten times activates USIM Lock. To use handset again, reissue USIM Card at SoftBank Shop (fees apply). For more about PUK, contact [SoftBank Customer Support \(http://mb.softbank.jp/en/customer_support/contacts.html\)](http://mb.softbank.jp/en/customer_support/contacts.html).

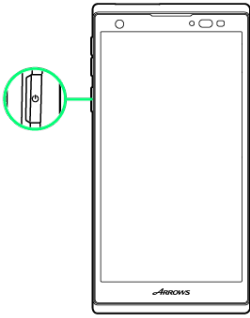
Screen Lock


After set period of inactivity, Screen Lock activates.

Canceling Screen Lock

1

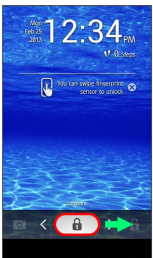
In Sleep mode, Press 




 Cancel Screen Lock window appears.

2

Drag  to 



 Screen Lock is canceled.

Unlocking by Fingerprint Sensor

Cancel Sleep mode and Screen Lock.

1


In Sleep mode, Press Fingerprint Sensor



 Cancel Screen Lock window appears.

2

Slide your finger over Fingerprint Sensor

 Screen Lock is canceled.

 Start Camera on Cancel Screen Lock window

Slide  left to .

Software Updates

Look for available updates. Update as required.


Automatic Software Updates

Download update file automatically and update software on specified day and time.


Update via Wi-Fi is described here.

1

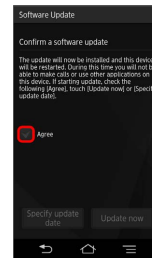
Receive Software update information

 Downloading of update file starts automatically.

2

Confirm information in "Confirm a software update" 

(Show)



3

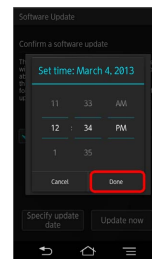
Specify update date




To update immediately, Tap . Follow onscreen instructions.

4

Set date  Set time 



 Date and time are set. Notification appears on specified date. Follow onscreen instructions.

Manual Software Updates


1

In Home Screen,   Settings  About phone



2

Software update

 Follow onscreen instructions.

Before Software Update

Handset data may be lost to damage, malfunction, etc. Always back up important files. Back up important information before Software Update. SoftBank Mobile Corp. is not liable for loss or associated damages.

Software Update Cautions

Handset cannot be used until Software Update completes; it may take some time to complete.
Confirm signal strength and battery charge beforehand. Poor signal strength or low Battery may disrupt updates leading to lost data or handset malfunction.

Handset Interface

Home Screen Basics.....	32
Status Bar.....	32
Notifications Window.....	34

Home Screen Basics

Home Screen top sheet appears at power on; most operations start here.


Layout



Item	Description
1 Status Bar	Drag down to open Notifications Window
2 Current position	Current Home Screen sheet position
3 Dock	Tap an icon to launch application or function; User can customize with up to 4 shortcuts and folders
4 Back button	Return to the previous screen or close the keyboard
5 Home button	Return to Home Screen; Touch & Hold to show recently-used applications
6 Customize Area	Customize with application shortcuts, folders or widgets
7 Menu button	Open Menu window
8 Launcher	Open Launcher; Touch & Hold to use handwritten input search

Toggleing Home Screen Sheets

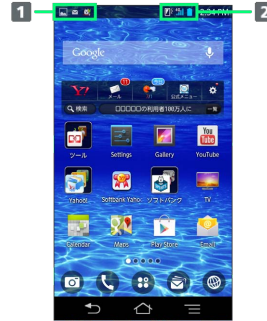
Home Screen consists of several sheets. Add shortcuts, widgets or folders to sheets. Flick left/right to toggle Home Screen sheets.

In any Home Screen sheet, Press  to return to Home Screen top sheet.

Status Bar

Status Bar appears at the top of Display.

Status Bar



- 1 Notification Indicators
- 2 Status Indicators

Notification Indicators

These Notification Indicators appear in Status Bar:

Icon	Description
	New Gmail
	New Email
	New NX! Mail
	New Urgent News
	Voicemail Recorded
	New Voicemail
	Music Playing
	Wi-Fi Available
	File Received via Bluetooth®
	Wi-Fi Tethering On
	Wi-Fi Tethering and USB Tethering On
	Call in Progress
	Missed Call
	Call On Hold
	Data Uploading
	Data Downloading
	Google Play App Update Available/ Installation Complete
	Comfortable Alarm Set
	Syncing Trouble
	FM Transmitter On
	Earphone Connected (Input from Phone MIC)
	Earphone Connected (Input from Headset MIC)
	One Seg Being Received
	One Seg Being Recorded
	VPN Connected
	Battery Doctor Notification
	NX! eco (Time period 1)
	NX! eco (Time period 2)
	NX! eco (Battery care eco-mode)
	NX! eco (Instant eco-mode)
	Zoomed with Best-fit zoom
	Screen Orientation Locked with Shake to unrotate
	GPS Positioning
	Phone Memory Low
	Dolby Mobile setting On (Icon Varies by Set Genre)
	Software Update Notification
	New Notification from 音声アシスト (Onsei Assist Voice Assistant Application)

Status Indicators

These Status Indicators appear in Status Bar:

Indicator	Description
	4G Data in Use
	3G Data in Use
	Wi-Fi Connected
	Bluetooth® On
	Bluetooth® Connected
	Airplane Mode
	NFC/Osaifu-Keitai Locked, or Osaifu- Keitai Locked and NFC Unlocked
	Osaifu-Keitai Unlocked and NFC Locked
	Recording Voicemail Set
	Speakerphone On
	Ringtone Volume 0
	Vibration On
	Signal Strength
	Roaming
	No Signal
	Manner mode Active
	Manner mode (Silent) Active
	Manner mode (Alarm) Active
	Original manner Active
	Mic Muted
	Charge Battery
	Battery Nearly Empty
	Battery Low
	Battery Charged
	Battery Charging
	Screen Lit with Lit when held
	Kana Input Mode
	Alphabet Input Mode
	Number Input Mode
	Handwriting Input Mode
	Smiley/Pictogram/Symbol, Phrase, Character Code Input
	Improved sound for IP calls On

Notifications Window

Open notifications (missed call, etc.), check handset status or change various settings.

Opening Notifications Window

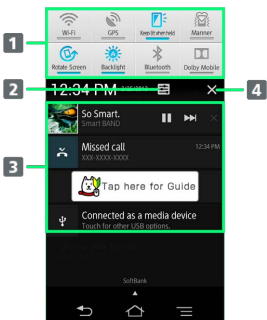
1

Drag Status Bar down



Notifications Window opens.


Layout



Item	Description
1 Status Switches	On/Off of each function
2 Settings	Set each function
3 Notifications/Running Items	Notification details or item setting
4 Clear Notifications	Delete notifications

+ Closing Notifications Window

Drag  up.

· Alternatively, Press .

Phone


Calling.....	36
Optional Services.....	37
Address Book.....	42

Calling


Learn calling basics, including handling incoming calls, and in-call operations.



Placing Calls

1

In Home Screen,  (NX! Dial)

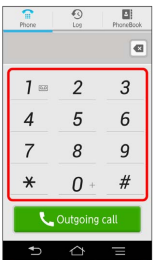


 Onscreen dialpad appears.

· Alternatively, in Home Screen,   (NX! Dial) to activate NX! Dial.

2

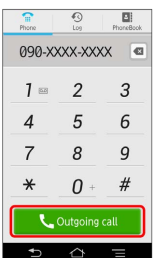
Use onscreen dialpad to enter number




· Enter city code for landlines.


3

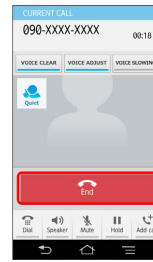
Outgoing call




 Ringback tone sounds. Wait for receiver to accept call.

4


To end the call, 

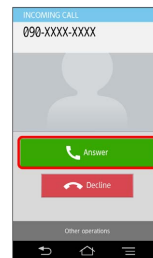


 Call ends.


Answering Calls

1

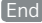
When call connects, 

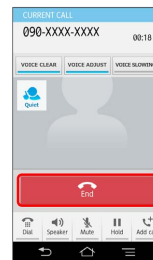



 Talk.

· To answer a call in Sleep mode or on Cancel Screen Lock window, drag  right.

2

To end the call, 



 Call ends.

Emergency Location Report

Using SoftBank 3G handset for emergency calls (110, 119 or 118) automatically reports handset location to corresponding agency (police, etc.)

- Location Report does not incur registration/transmission fees.
- Location/signal conditions affect positioning accuracy. Always provide location and call purpose.
- Hiding Caller ID (using 184, etc.) cancels Location Report. However, corresponding agency may obtain location information in life threatening situations.
- Location Report is not sent for calls made while outside Japan.

Optional Services

This handset is compatible with SoftBank Optional Services.

Optional Services

Use these SoftBank Optional Services:

Service	Description
Call Forwarding	Divert all/unanswered calls to a preset number
Voicemail	Divert all/unanswered calls to Voicemail Center; access messages via handset/touchtone phones
Call Waiting ¹	Answer calls during a call
Group Calling ¹	Switch between open lines/connect multiple lines
Caller ID	Show or hide your number when placing calls
Call Barring	Restrict calls according to situation

¹ Requires separate subscription

Call Forwarding

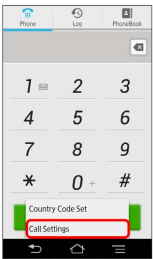
1

In Home Screen, ☎ (NX! Dial)



2

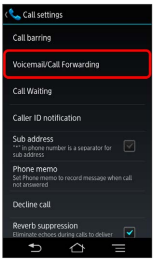
☰ → Call Settings



☑ Call settings appears.

3

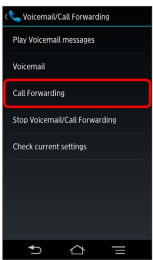
Voicemail/Call Forwarding



☑ Voicemail/Call Forwarding appears.

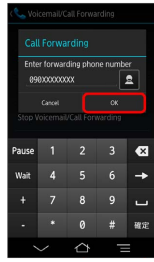
4

Call Forwarding



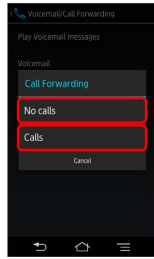
5

Tap Phone number field → Enter number → OK



6

No calls / Calls



· Set Call time when selecting Calls .

7

OK

☑ Call Forwarding is set.

Voicemail

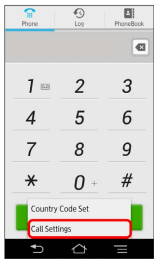
1

In Home Screen, (NX! Dial)



2

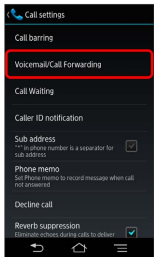
Call Settings



Call settings appears.

3

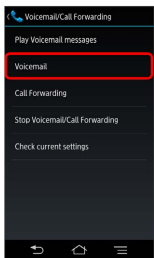
Voicemail/Call Forwarding



Voicemail/Call Forwarding appears.

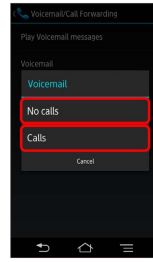
4

Voicemail



5

No calls / Calls



· Set Call time when selecting **Calls** .

6

OK


Voicemail is set.

· When a new message is recorded, appears in Status Bar.
Tap **New voicemail** for voice guidance.

Call Waiting

Requires separate subscription.

1


In Home Screen,  (NX! Dial)



2

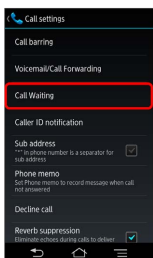
  Call Settings




 Call settings appears.

3

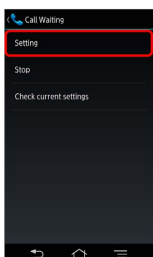
Call Waiting



 Call Waiting appears.


4

Setting



5

OK  OK

 Call Waiting is set.

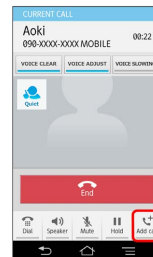
· Call Waiting tone sounds for new call. Tap **Answer** to accept the call.

Group Calling


Requires separate subscription.

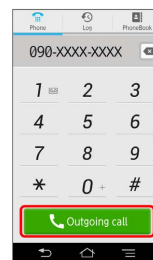
1

During a call, **Add call**



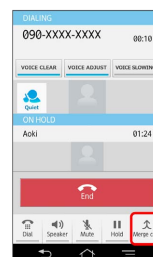
2


Enter another phone number  **Outgoing call**



3

When receiver accepts call **Merge calls**



 Group Calling begins.

Caller ID

1

In Home Screen, (NX! Dial)



2

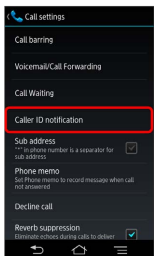
Call Settings



Call settings appears.

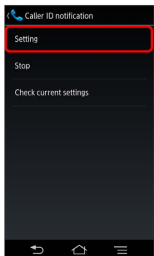
3

Caller ID notification



4

Setting



5

OK OK

Caller ID is set.

Call Barring

Restrict calls to/from specified numbers.

- Call Barring requires Call Barring Password.
- Entering incorrect Call Barring Password three times disables Call Barring. Call Barring Password must be changed. Contact [SoftBank Customer Support](#).
- If you have previously changed Call Barring Password on a SoftBank handset, use the new password.
- If a call is attempted while calling is restricted, a message appears. Message may take time to appear in some areas.

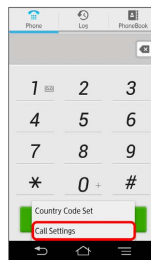
1

In Home Screen, (NX! Dial)



2

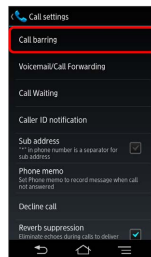
Call Settings



Call settings appears.

3

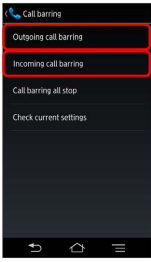
Call barring



Call barring screen appears.

4

Outgoing call barring / Incoming call barring



5

Tap incoming/outgoing restrictions → OK

6

Enter Call Barring Password → OK

Call Barring is set.

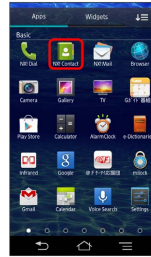
Address Book

Save phone numbers, mail addresses, etc. to Address Book.

Adding New Contacts

1

In Home Screen, (NX! Contact)

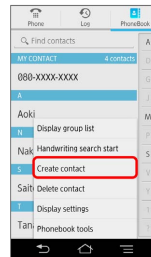


New Contact window appears.

· Alternatively, in Home Screen, (NX! Dial) → .

2

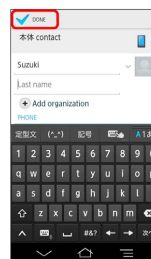
→ Create contact



· If confirmation appears, follow onscreen instructions.

3

Enter items → DONE



Contact is saved.

Messaging & Browser

Messaging.....	44
Using NX! Mail.....	44
Creating/Sending Mail/SMS.....	45
Creating/Sending Gmail.....	47
Internet Mail Settings.....	48
Web Browsing.....	48

Messaging

S! Mail

Exchange long text messages with S! Mail-compatible SoftBank handsets, other mobile providers' terminals, computers/other email-compatible devices. Attach media files for multimedia messaging.

- Exchange messages using NX! Mail.

SMS

Exchange short text messages (up to 140 single-byte characters) using handset phone numbers as addresses.

- Exchange messages using NX! Mail.

Gmail

Gmail is Google's webmail service. Handset automatically syncs with Gmail.

- Also exchange messages using Email or NX! Mail.

Internet Mail

Use Internet Mail (POP3/IMAP4) on handset.

- Exchange messages using Email or NX! Mail.
- Set up Internet Mail accounts beforehand.
- Exchanging Internet Mail via handset syncs handset and mail server.

Using NX! Mail

NX! Mail manages multiple mail accounts of S! Mail, SMS, Gmail, etc.


NX! Mail supports Privacy mode; set to show or hide contacts, to notify or not to notify new mail, etc.

Adding Accounts


Add an account to use.




- S! Mail account is set by default.

1

In Home Screen,  (NX! Mail)

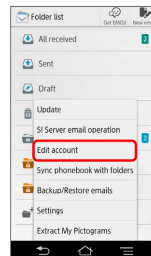



 Folder list appears.

- Alternatively, in Home Screen,    (NX! Mail) to activate NX! Mail.

2

  Edit account

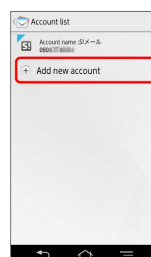


 Account list appears.

- Alternatively, Tap   Settings  Account settings to show Account list.

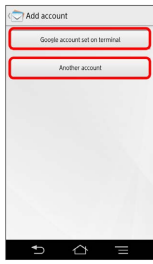
3

Add new account



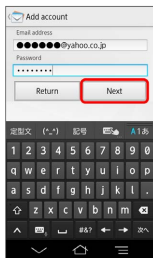
4

Google account set on terminal / Another account



5

Enter mail address and password → Next



When you tap **Google account set on terminal** in Step 4, enter password → **Next** → Go to Step 7.

6

IMAP / POP



7

Edit Account name display, Account icon, Name displayed in outgoing email as required → **Finished**

An account is added.

Creating/Sending Mail/SMS

Creating/Sending Mail

1

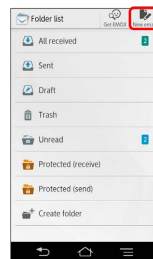
In Home Screen, (NX! Mail)



Folder list appears.

2

New email



New email window appears.

Alternatively, Tap **New email** in Mail list to open New email window.

3

Tap From field → Select an account



4

Tap To field → Enter mail address



- Enter name or address saved in Contacts to show candidates.
- Alternatively, [Phonebook] / [Outgoing history] / [Incoming history] → Select recipients.

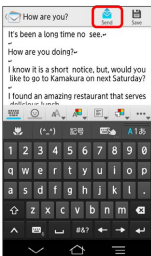
5

Tap Subject field → Enter subject



6

Tap Enter message here. field → Enter text → Send



7

OK

Mail is sent.

Creating/Sending SMS

1

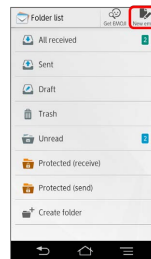
In Home Screen, (NX! Mail)



Folder list appears.

2

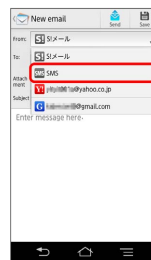
New email



New email window appears.

3

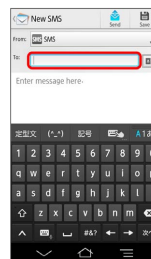
Tap From field → SMS SMS



New SMS window appears.

4

Tap To field → Enter phone number




- Enter name or address saved in Contacts to show candidates.
- Alternatively, [Phonebook] / [Outgoing history] / [Incoming history] → Select recipient.

5

Tap Enter message here. field → Enter message → Send



 SMS is sent.

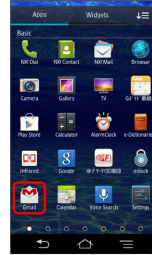
Creating/Sending Gmail


To use Google Mail, create a Google Account and sign in beforehand.

Creating/Sending Gmail

1

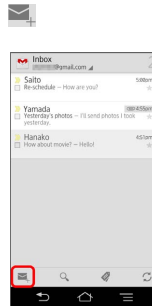
In Home Screen,    (Gmail)




 Inbox appears.



· If confirmation appears, follow onscreen instructions.

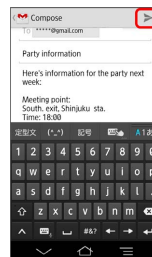
2




 New message window appears.

3

Enter To, Subject, and message text →  



 Message is sent.

Gmail Caution

Barring Internet Mail on handset blocks Gmail messages.

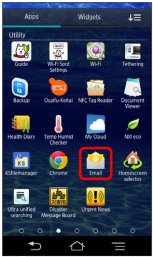
Internet Mail Settings


Adding Accounts

Check usernames (user IDs), passwords, server names, etc. of your Internet Mail accounts beforehand.


1

In Home Screen,    (Email)



 Account setup menu opens (if no account is set up).


2

Enter mail address and password  **Next**


· Tap **Manual setup** to configure incoming/outgoing server settings directly.

3

Follow onscreen instructions

 Account is added.

4

Enter Account name and Your name for outgoing messages 


Next

 Internet mail account is set.


Web Browsing




Using Browser

1

In Home Screen,  (Browser)




 Browser opens.


· Alternatively, in Home Screen,    (Browser) to open Browser.

Adding Bookmarks

1

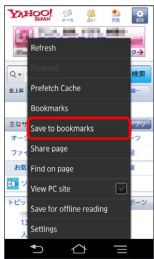
In Home Screen,  (Browser)




 Browser opens.



2

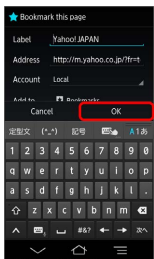
Open target page    Save to bookmarks




 Add bookmark window opens.

3

Check/edit label, URL, etc.  




 Current webpage is added to Bookmarks.


Opening New Tabs

Open up to 16 pages in different tabs to switch between pages easily.

1

In Home Screen,  (Browser)



 Browser opens.

2




 Tab index appears.

• Dragging screen down shows address bar.


3



 New tab appears.

Using SSL/TLS

Secure Sockets Layer (SSL) and Transport Layer Security (TLS) are encryption protocols that secure Internet transmissions of important/sensitive information such as credit card numbers and corporate secrets, providing protection against online threats (eavesdropping, falsification, impersonation, etc.). Handset is preloaded with digital certificates issued by certificate authorities.

 SSL/TLS Caution

When a security notice appears upon opening a webpage, subscribers must decide for themselves whether or not to open the page. Opening secure pages constitutes agreement to the terms of SSL/TLS usage. SoftBank Mobile Corp., VeriSign Japan and Cybertrust cannot be held liable for any damages associated with the use of SSL/TLS.

Camera


Imaging.....52

Imaging

Capturing Photos




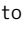
- Captured photos are saved to SD Card by default.

1

In Home Screen,  (Camera)




 Camera Viewfinder appears.

- Alternatively, in Home Screen,   to open Viewfinder.
- Alternatively, in locked screen, Drag  to  to open Viewfinder.
- If confirmation appears, follow onscreen instructions.



2


Frame subject in Viewfinder



 Auto focus activates. Frame turns to green when the subject is focused on.

3

 (Shutter)/ 


 Shutter clicks and photo is saved.

- If confirmation appears, follow onscreen instructions.


Recording Videos

Recorded videos are saved to SD Card by default.

1

In Home Screen,  (Camera)





 Camera Viewfinder appears.

2

  Video


 Video Viewfinder appears.

- Alternatively, in Viewfinder, Tap   Video to activate.
- If confirmation appears, follow onscreen instructions.



3

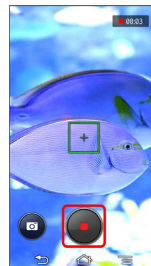
Frame subject in Viewfinder   (Record)/ 




 Auto focus activates, recording start sound sounds and then recording starts.


4

Tap  (End recording)/  to end recording



 Recording end sound sounds and video is saved.


- If confirmation appears, follow onscreen instructions.

 **Imaging Notes****Photo File Format**

Photos are saved as JPEG files.

Video File Format

Videos are saved as H.264 files.

 **Camera Cautions****Keep Lens Clean**

Fingerprints/smudges may hinder handset imaging. Clean Lens with soft cloth beforehand.

Avoid Direct Sunlight Exposure

Do not expose Lens to direct sunlight for extended periods; may color filter, altering images.

Using Camera in high temperature

Cease using Camera if handset feels hot; Camera may show message and shut down if continued to be used.

Music & Images

Music Files.....	56
Image Files.....	56


Music Files

Playing Music Files

1

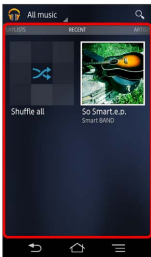
In Home Screen,    (Play Music)



 Music Library appears.

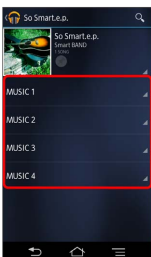
2

Flick Display left/right to select category (ALBUMS, etc.)



3

Tap item  Tap a song




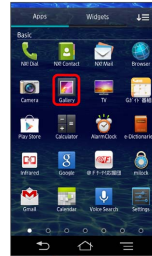
 Song plays.


Image Files

Viewing Images

1

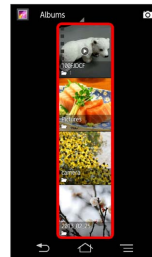
In Home Screen,    (Gallery)



 Album index appears.

2


Tap an album



3

Tap image to view it



 Image appears.

Connectivity

Wi-Fi.....	58
Bluetooth®.....	58

Wi-Fi

Use household Wi-Fi networks, etc. to connect to the Internet.


Connecting to Wi-Fi Networks

Select from available networks to establish a connection.

1

In Home Screen,   






 Wi-Fi settings appears.

2



OFF



 Wi-Fi is enabled ().

· Tap  to disable Wi-Fi.

3

Tap Wi-Fi Network  Enter password  



 Handset connects to Wi-Fi network.

- A Wireless LAN router in your home may have a sticker with a password for WEP, WPA, and KEY. For details contact your router manufacturer. Also, please check your provider's contract for the password for Public Wireless LAN.
- Unsecured networks do not require password entry.

Bluetooth®

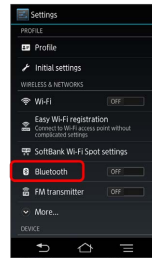
Connect handset to other Bluetooth® devices for wireless connectivity.

Activating Bluetooth®

- Handset may not pair with all Bluetooth® devices.
- Some paired devices may not operate correctly.
- Noise may occur when using wireless/handsfree devices.

1



In Home Screen,   




2

OFF



 Bluetooth® is enabled ().

- Tap  to disable Bluetooth®.
- If confirmation appears, follow onscreen instructions.

? Trouble Shooting

- Q. Why can't I use Bluetooth®?
- A. Airplane mode may be active. Bluetooth® is not available in Airplane mode.

Global Services

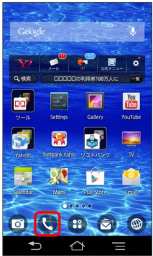
Calling Outside Japan..... 60

Calling Outside Japan

International Calling

1

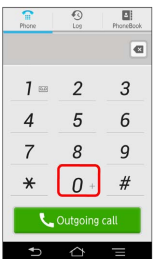
In Home Screen, ☎ (NX! Dial)



🇯🇵 Onscreen dialpad appears.

2

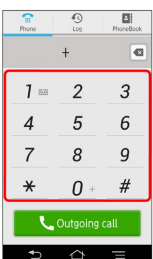
Touch & Hold 0 +



🇯🇵 + appears.

3

Omit first 0 from phone numbers when placing international calls



· Do not omit first 0 from phone numbers when dialing Italy (39).

4

Outgoing call

🇯🇵 Ringback tone sounds. Wait for receiver to accept call to talk.

Global Roaming

Place calls the same way you would within Japan.

· Do not enter country code or omit first 0 from phone numbers.

1

In Home Screen, ☎ (NX! Dial)



🇯🇵 Onscreen dialpad appears.

2

Use onscreen dialpad to enter phone number



3

Outgoing call

🇯🇵 Ringback tone sounds. Wait for receiver to accept call to talk.

Settings

About Settings.....	62
Wi-Fi Settings.....	63
Sound and Vibration Settings.....	64
Application Settings.....	65
Accounts & Sync Settings.....	65

About Settings

About Settings

In Home Screen,   **Settings** to customize settings.

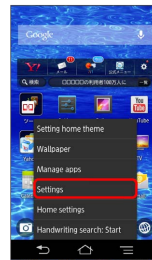
· Tap **More...** to show/hide some settings.


Item	Description
Profile	Check handset phone number.
Initial settings	Make necessary settings for handset use.
Wi-Fi	Enable Wi-Fi connection.
Easy Wi-Fi registration	Easily connect to an AOSS-, WPS-compatible Wireless LAN access point.
SoftBank Wi-Fi Spot settings	Set SoftBank Wi-Fi Spot.
Bluetooth	Enable Bluetooth connection.
FM transmitter	Send played music or audio via FM and listen with a car FM radio, etc.
Data usage	Check mobile data usage and set limit.
Airplane mode	Disable handset transmissions without powering off.
VPN settings	Add a VPN.
NFC/Osai-fu-Keitai Settings	Lock NFC/Osai-fu-Keitai® function, change password, etc.
Mobile networks	Set networks and a network operator.
Bluetooth Low Energy Settings	Set actions when a BLE (Bluetooth® Low Energy) device is connected.
Sound and Vibration	Set Manner mode and ringtone, confirmation tones, etc.
Display	Set Wallpaper, Display brightness, etc.
Multimedia	Set image quality, sound quality for photos or videos.
Storage	Check handset and SD Card memory space. Also perform SD Card mount and erase SD Card data.
Battery	Check Battery usage.
NX! eco	Turn off Display backlight, running functions to reduce battery consumption when Battery reaches a specified level or at a specified time.
Apps	Check/manage installed and running applications.
Location access	Enable/disable location access.
Security	Set Screen Lock, USIM/RUIM Card lock, Password manager, etc.
Setting my body	Enter user information before using health-conscious apps and widgets. Also set Voice adjust, Step/Activity counter app, etc.

Slide-in function	Set Slide-in function for launching apps, capturing screens, etc. by sliding from edge of screen (Slide Spot).
Language & input	Set language and input method.
Data reset	Delete all handset system memory files.
Desktop holder charge setting	Set charging preference.
Add account	Create/add accounts and synchronize accounts.
Date & time	Set date and time.
Accessibility	Set accessibility.
Developer options	Set developer options.
About phone	Check handset status.

1


In Home Screen,   **Settings**



 Settings window appears.

2

Set each item

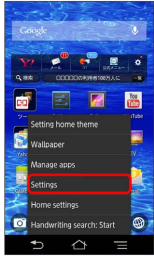
 Item is set.

Wi-Fi Settings

Wi-Fi Settings

1


In Home Screen,   **Settings**



2

Wi-Fi





 Wi-Fi settings appears.

3


OFF

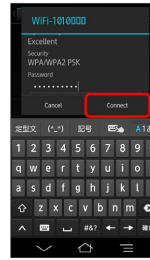



 Wi-Fi is enabled ().

· Tap **ON** to disable Wi-Fi.

4

Tap **Wi-Fi Network**  Enter password  **Connect**



 Handset connects to Wi-Fi network.

- A Wireless LAN router in your home may have a sticker with a password for WEP, WPA, and KEY. For details contact your router manufacturer. Also, please check your provider subscription for the password for public wireless LAN.
- Unsecured networks do not require password entry.

Sound and Vibration Settings

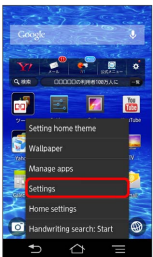
Sound and Vibration Settings

Set Manner mode, volume, phone ringtone, etc.

Item	Description
Volumes	Adjust Volume.
Alert sensitivity	Automatically adjust volume levels according to the ambient noise.
Manner mode	Set Manner mode.
MIC input	Set Mic when stereo earphones are connected.
Phone ringtone	Set phone ringtone.
Notification LED	Set notification LED.
Vibrate when ringing	Enable/disable vibration for ringtone/ notification sound.
Notification sound	Set notification sound.
Dial pad touch tones	Enable/disable dialpad tones.
Touch sounds	Enable confirmation tones when Tapping a menu.
Screen lock sound	Enable tone when locking/unlocking screen.
Charge vibrate	Enable vibration when charging starts/ ends.
Vibrate when touch	Vibrate when unlocking screen.
Distinct touch	Vibrate when Tapping screen.
Vibration level	Set vibration level when Tapping screen.
Increase vibration level when walking	Set vibration level when walking.

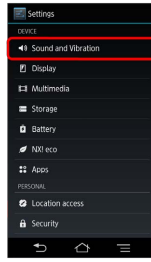
1

In Home Screen,   **Settings**




2

Sound and Vibration



3

Set each item

 Item is set.

Application Settings

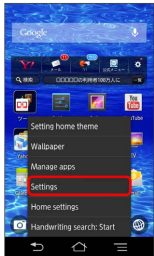
Application Settings

Confirm installed applications and running applications. Also save applications to SD Card and uninstall applications.

Item	Description
DOWNLOAD	Confirm downloaded applications.
ON SD CARD	Confirm applications in SD Card.
RUNNING	Confirm running applications.
ALL	Confirm all applications.

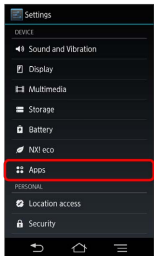
1

In Home Screen,   Settings





2

Apps




 Apps window appears.

· Alternatively, in Home Screen,   Manage apps to show applications.

3

Flick to switch tabs  Tap an application

 Confirm version/memory usage, uninstall/force-stop/disable application, etc.

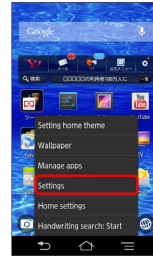
Accounts & Sync Settings

Accounts & Sync Settings

Add accounts and set Sync.

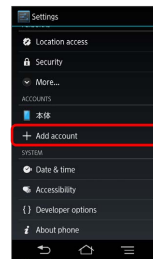
1


In Home Screen,   Settings



2


Add account



 Add an account window appears.

3

Select an account type  Follow onscreen instructions

 An account is set.

Appendix

Specifications.....	68
Customer Service.....	68

Specifications

Model

Item	Description
Weight ¹	Battery installed:151 g
Continuous Talk Time ¹	3G: 640 minutes GSM: 520 minutes
Continuous Standby Time ¹	4G: 300 hours 3G: 460 hours GSM: 450 hours
Charging Time ¹	200 minutes
TV Reception Time ¹	7 hours
Dimensions (W x H x D) ¹	65 × 129 × 10.8 mm (except projections)
Maximum Output	4G: 0.2 W 3G: 0.25 W GSM: 2 W

¹ Approximate value

Battery

Item	Description
Voltage	3.8 V
Type	Lithium-ion
Capacity	2420 mAh
Dimensions (W x H x D) ¹	55.1 × 62.4 × 5.85 mm (except projections)

¹ Approximate value

Customer Service

For SoftBank handset or service information, call General Information. For repairs, call Customer Assistance.

SoftBank Customer Support

General Information

From a SoftBank handset, dial toll free at 157
From a landline/IP phone, dial toll free at 0800-919-0157

Customer Assistance

From a SoftBank handset, dial toll free at 113
From a landline/IP phone, dial toll free at 0800-919-0113
If you cannot reach a toll free number, use the number (charges apply) below for your service area:
Hokkaido Area, Tohoku Area, Hokuriku Area, Kanto-Koshinetsu Area: 022-380-4380
Tokai Area: 052-388-2002
Kansai Area: 06-7669-0180
Chugoku, Shikoku Area, Kyushu, Okinawa Area: 092-687-0010

Smartphone Technical Support Center

From a SoftBank handset, dial toll free at 151
From a landline/IP phone, dial toll free at 0800-1700-151

SoftBank Mobile Global Call Center

From outside Japan, dial +81-3-5351-3491 (toll free from SoftBank handsets)
If handset is lost/stolen, call this number immediately (international charges apply)

Safety Precautions

Safety Precautions.....	70
Important Product Information.....	76
Waterproofing/Dustproofing.....	80
General Notes.....	82
RF Exposure Information/Specific Absorption Rate (SAR) Information.....	84

Safety Precautions




Read safety precautions before using handset.

Observe precautions to avoid injury to self or others, or damage to property.

SoftBank Mobile Corp. is not liable for any damages resulting from use of this product.

Safety Precautions

These labels indicate the degree of risk from improper use. Make sure you thoroughly understand their meanings before reading on.







Mark	Descriptions
 DANGER	Great risk of death or serious injury ¹ from improper use
 WARNING	Risk of death or serious injury ¹ from improper use
 CAUTION	Risk of minor injury ² or damage to property ³ from improper use

1 Serious injury includes: Loss of eyesight, physical injury, high temperature burns, low temperature burns, electric shock, fractures, poisoning and other conditions having side effects or requiring hospitalization or long term treatment.

2 Injury includes: Physical burns (high-temperature and low-temperature), electric shock, and other conditions not requiring hospitalization or long-term treatment.

3 Damage to property includes: Incidental damage to structures and household property and/or to pets and livestock.

These symbols indicate prohibited or compulsory actions. Make sure you thoroughly understand their meanings before reading on.

Mark	Descriptions
 Prohibited	Prohibited actions
 Do Not Disassemble	Disassembly prohibited
 Avoid Liquids Or Moisture	Exposure to liquids prohibited
 Do Not Use Wet Hands	Use with wet hands prohibited
 Compulsory	Compulsory actions
 Disconnect Power Source	Unplug AC Charger from outlet

Handset, Battery, USIM Card, AC Charger, Desktop Holder, SD Card (Sample)

DANGER



Compulsory

Use specified Battery, AC Charger and Desktop Holder only.

Non-specified accessory use may cause Battery to leak, overheat, burst or ignite, or cause AC Charger to overheat, ignite, malfunction, etc.



Do Not Disassemble

Do not disassemble, modify or solder.

May cause fire, injury, electric shock or malfunction.

Battery may leak, overheat, burst or ignite.

Modifying handsets is prohibited by the Radio Law and subject to penalty.



Avoid Liquids Or Moisture

Keep away from water.

Do not let liquid-exposed handset/related hardware remain wet; do not charge wet Battery. Doing so may cause overheating, electric shock, fire, injury or malfunction. Use handset/related hardware properly/appropriately.



Prohibited

Do not charge Battery in or use or expose handset/related hardware to extreme heat (e.g. near fire or source of heat, in direct sunlight, inside vehicles, etc.). Do not charge, use or leave Battery or handset/related hardware in a place where heat collects, such as under a kotatsu (blanketed warming table) or next to a kairo (worn warming patch), etc.

May cause warping/malfunction; Battery may leak, overheat, ignite or burst. Handset or related hardware may become too hot to touch, leading to burn injuries, etc.



Prohibited

Do not force Battery/AC Charger into handset.

Confirm terminal/connector orientation; retry.

Battery may leak, overheat, burst, ignite, etc.

WARNING



Prohibited

Do not put handset, Battery, AC Charger or Desktop Holder in cooking appliances such as a microwave or pressure cooker or on IH cooking heaters.

May cause Battery to leak, overheat, burst or ignite or cause handset or AC Charger to overheat, emit smoke, ignite or cause malfunction.



Compulsory

Keep handset off and do not charge Battery near gas station or places with fire/explosion risk.

Handset use near petrochemicals or other flammables may cause fire/explosion. Be sure to power off handset before using NFC/Osaifu-Keitai® in filling stations. (When NFC/Osaifu-Keitai® Lock is set, power off handset after unlocking setting.)



Prohibited

Do not drop, throw or otherwise subject to strong force or impact.

Battery may leak, overheat, burst, or ignite, and may result in fire, cause electric shock, malfunction, etc.



Compulsory

Take these actions in case of odd sound, odor, smoke or abnormalities:

1. Grasp AC Charger to unplug it.
2. Power off.
3. Remove Battery being careful not to burn or injure yourself.

Continued use may cause fire, electric shock, etc.



Prohibited

Keep liquids (water, pet urine, etc.) and conductive material (pencil lead, metal parts, necklaces, hairpins, etc.) away from charging terminal of Desktop Holder, External Device Port and Earphone Port.

May cause short circuit, resulting in fire, malfunction, etc.

CAUTION



Prohibited

Do not place handset on unstable/uneven surfaces.

Handset or related hardware may fall, resulting in injury, malfunction, etc.; take added care when Vibration is set or while charging.



Compulsory

Keep handset and related hardware out of infants' reach or pets.

Infants or pets may swallow handset or related hardware resulting in injuries.



Compulsory

A guardian should supervise use by children and insure handset is used as instructed.

Failure to do so may result in injuries.

Battery

DANGER

Read Battery label to confirm battery type; use/dispose of Battery accordingly.

Symbol on Label	Battery Type
Li-ion00	Lithium-ion



Prohibited

Do not dispose of Battery in fire.

Battery may leak, burst, ignite, etc.



Prohibited

Do not damage (nail, hammer, stomp, etc.) Battery or subject it to strong impact.

Battery may leak, overheat, burst, ignite, etc.



Prohibited

Keep wire and other metal objects away from Battery terminals. Do not carry/store Battery with conductive material (pencil lead, metal parts, metal necklaces, hairpins, etc.).

Battery may leak, overheat, burst, ignite, etc.



Compulsory

If battery fluid gets into eyes, do not rub; rinse with water and consult a doctor immediately.

May cause blindness.

WARNING



Compulsory

If battery fluid contacts skin or clothes, discontinue handset use and rinse with clean water immediately.

May cause skin damage.



Compulsory

If Battery does not charge after specified time, stop charging.

Battery may leak, overheat, burst, ignite, etc.



Compulsory

In case of abnormal odor, excessive heat, discoloration or distortion, remove Battery, being careful not to burn or injure yourself. Avoid sources of flame.

Continued use may cause Battery to leak, burst, overheat, ignite, etc.



Compulsory

Do not allow a pet to bite or chew on handset. Do not use Battery a pet bit or chewed.

Battery may leak, overheat, burst or ignite. Handset may malfunction.

CAUTION



Prohibited

Do not dispose of exhausted Battery with ordinary refuse.

Tape over Battery terminals before disposal. Take Battery to a SoftBank Shop, or follow the local disposal regulations.

Handset

WARNING

Prohibited

Do not use handset while driving a vehicle, motorbike or riding a bicycle.

May cause an accident. Drivers/riders using handsets while driving/riding are subject to prosecution. Stop your vehicle and park in a safe place before using handset.



Compulsory

Power off near electronic devices or equipment operating on high precision control or weak signals.

May cause electronic malfunctions, etc.

*Take added care near these devices: Hearing aids, implanted cardiac pacemakers, implanted cardioverter defibrillators, other electronic medical equipment, fire detectors, automatic doors, and other automatically controlled devices or equipment.



Compulsory

Power off before boarding aircraft to avoid possible radio wave interference with aircraft operations.

If mobile phone use is allowed on board, follow airline or cabin crew instructions regarding handset use.



Compulsory

Users with a heart condition should adjust ringtone Vibration and Volume as needed.

May cause heart damage.



Compulsory

During thunderstorms, power off immediately and seek shelter.

Lightning strikes or electric shock may occur.



Prohibited

Do not send via infrared aiming someone's eye.

May affect eyes.



Prohibited

Do not position Flash close to the faces of others. Do not look at Flash directly while in use. Do not point Flash at the eyes of others.

It may harm eyesight. Do not photograph infants up close. Flash may impair vision, causing accidents.

CAUTION

Prohibited

Do not use handset when it may affect a vehicle's electronic equipment.

Handset use may affect devices and lead to unsafe driving.



Compulsory

If you experience any skin irritation associated with handset use, discontinue handset use and consult a doctor.

Metal and other materials may cause skin irritation, rashes, or itchiness depending on your physical condition.



Prohibited

Keep handset away from magnetic cards, etc.

Data on bank cards, credit cards, telephone cards, floppy disks, etc. may be lost.



Prohibited

Do not swing handset by Strap, etc.

Handset may harm yourself or others or Strap may break resulting in injury or handset malfunction/ breakage.



Compulsory

Handset may become hot while in use, especially in high temperatures.

Prolonged contact with skin may cause burn injuries.



Prohibited

Always maintain some distance from Speaker while ringtones, music or other handset sounds play.

Excessive volume may damage ears or hearing.



Compulsory

Watch One Seg from a distance in good light.

May impair vision.



Compulsory

Moderate handset Volume when using Headsets.

Prolonged use and excessive volume may damage ears or hearing.



Compulsory

Use FM Transmitter only in Japan. FM Transmitter uses weak signals requiring no license as a radio station under Japanese laws and regulations. Using this function abroad may be subject to prosecution.

Desktop Holder, AC Charger

WARNING



Prohibited

Do not cover/wrap with clothing or bedding while charging.

Heat may build up resulting in fire, malfunction, etc.



Prohibited

Use specified power supply and voltage.

May cause fire, malfunction, etc.

AC Charger: 100 V to 240 V AC (household AC outlet only)

Do not use commercially available voltage converter, as when travelling. Doing so may cause fire, electric shock or malfunction.



Disconnect Power Source

Unplug AC Charger if you are not going to use it for long periods.

May cause electric shock, fire or malfunction.



Disconnect Power Source

If liquids (water, pet urine, etc.) seep inside AC Charger, unplug it immediately.

May cause electric shock, smoke or fire.



Compulsory

If plug is dusty, grasp AC Charger to unplug it, then clean with a dry cloth.

May cause fire.



Compulsory

When plugging AC Charger into outlet, keep conductive materials (pencil leads, metal parts, necklaces, hair pins, etc.) away from AC Charger plug/terminals and plug AC Charger firmly into outlet.

May cause electric shock, short circuit, fire, etc.



Do Not Use Wet Hands

Do not plug in/unplug AC Charger with wet hands.

May cause electric shock or malfunction.



Prohibited

Do not touch AC Charger if thunder is audible.

May cause electric shock, etc.

CAUTION



Disconnect Power Source

Grasp AC Charger to unplug it before cleaning.

May cause electric shock, etc.



Compulsory

Always grasp AC Charger (not USB Cable) to disconnect it.

Pulling USB Cable may damage cord, causing electric shock, fire, etc.



Prohibited

Do not subject AC Charger to strong shock or impact while it is plugged into the outlet.

May cause injury or malfunction.



Prohibited

Do not touch Charging Terminal of Desktop Holder for a long time while charging.

May result in low-temperature burns.



Prohibited

Do not touch Charging Terminal with your hands, fingers, etc.

May cause electric shock, injury or malfunction.

Handset Use & Electronic Medical Equipment

WARNING



Persons with an implanted pacemaker or defibrillator should keep handset at least 22 cm away from the device.

Radio waves may interfere with implanted pacemakers or defibrillators.



When using electronic medical equipment (other than implanted cardiac pacemakers/defibrillators) outside medical facilities, check with the equipment vendor or distributor for information about the effects of radio waves.

Handset radio waves may affect electronic medical equipment.



Handset radio waves may affect electronic medical equipment. Observe these guidelines in medical institutions:

- Do not take handset into operating rooms, or intensive or coronary care units.
- Keep handset turned off in hospital wards.
- Even in lobbies or other places where handset use is permitted, keep handset off near electronic medical equipment.
- Follow medical facility rules on handset use.



Power off in crowded places such as trains.





People with implanted pacemakers or defibrillators may be near. Radio waves may interfere with implanted pacemakers or defibrillators causing such devices to malfunction.

Important Product Information

Handset, Battery, USIM Card, AC Charger

- Use handset with Battery Cover, External Device Port Cover firmly closed to ensure water and dust resistance.
- Do not apply excessive force on handset.
 - Do not sit down with handset in a back pocket.
 - Do not place heavy objects in a bag with handset inside.
- Display is made of hardened glass, however, it may be broken if it is subject to excessive force or strong impact. If Display should be broken, stop using and do not touch fragments.
- Use AC Charger, Micro USB Charging Adapter (sold separately) within temperatures of 5°C to 35°C and humidity 35% to 80%. Avoid extreme temperatures, humidity.
- Use handset, Battery, USIM Card (inserted in handset) within temperatures of 5°C to 35°C and humidity 35% to 90%. Avoid extreme temperatures, humidity, direct sunlight (temporary use at 36°C to 40°C).
- Do not use handset, Battery, USIM Card, or AC Charger in a dusty place or where there is much vibration.
- Clean Charging Terminal with a dry cotton swab etc. Dust in port may cause contact failure. Do not apply excessive force.
- Clean handset, Battery, USIM Card, or AC Charger with a dry, soft cloth. Using benzene, thinner, alcohol, detergent, etc. may fade color/print.
- Handset use near TVs, speakers, etc. may cause interference.
- Handset may become warm while calling, using applications, charging, etc., but is not a malfunction.
- Do not scratch or subject Fingerprint Sensor to strong impact. It may cause malfunction or fault.
- Do not poke Fingerprint Sensor with sharp objects such as a pen. It may cause malfunction.
- Do not use Fingerprint Sensor with a wet or dirty finger. It may cause malfunction. Wipe off water or dust. A finger wrinkled from being wet also may cause malfunction.
- When removing Battery, power handset off. Failure to do so may alter or delete saved data.
- Attach Battery in the correct direction. Failure to do so may cause damage or malfunction.
- Connect AC Charger in the correct direction. Failure to do so may cause damage or malfunction.

Handset

- Do not remove nameplate from handset; doing so invalidates warranty.
- Handset is certified as conforming to technical standards for specified wireless equipment based on the Radio Law. To show "Technical Compliance Mark ", in Home Screen,    **Regulations Conformity Certification**
- When Battery Cover is removed, an antenna film for ensuring water resistance and signal reception is visible. Do not scratch or remove it.
- Mail and downloaded data (paid and free) saved on handset cannot be transferred when handset is replaced in case of model change or repair.
- Display is manufactured with high precision technology, however, some pixels may appear darker/brighter.
- Do not apply strong force to Display.
- Do not press fingernails, sharp objects, or hard objects against Keys or Display. To prevent malfunction of Display, do not:
 - Touch with gloved hand
 - Operate with fingernails
 - Operate with a foreign object on Display
 - Attach protective sheet
 - Operate wet Display
 - Operate with wet fingers
 - Operate under water
- Use handset without disturbing others.
- Handset may become warm during use or charging. Do not touch warm handset for a long time. May cause low-temperature burns.
- Handset may become warm during use or charging. Charging may stop or Display may become dark, but is not a malfunction. If handset is used under such conditions, alert may appear and handset may power off.
- Do not use Camera while handset is warm. Camera may automatically stop.
- If handset becomes extremely hot during use, stop using immediately.
- If the same screen remains for a long while, afterimages may remain. This is not a malfunction.
- Clean handset with a dry, soft cloth. Using alcohol, thinner, etc. may damage it.
- Do not cover RGB Sensor with your finger or a sticker.
- Do not cover Proximity Sensor with a sticker or your hair during call. Doing so may cause misoperation or interruption of call.
- Covering Temperature/Humidity Sensor may affect measuring accuracy.
- Covering Antenna with your fingers or metal objects may affect receiving sensitivity.
- External Device Port Cover is designed not to easily be removed. If it should be removed, reattach it.
- Extreme temperature changes, cold air from air conditioning, etc. may cause condensation. It may result in corrosion.
- Read SD Card manual beforehand for proper use.
- Place your ear on center of Speaker for the best reception.
- Keep away from magnetism-generating devices such as a TV. It may cause malfunction.

Touchscreen

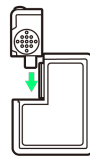
- Lock screen when putting handset in a pocket or bag to avoid erroneous operation.
- Do not touch Display with sharp objects such as ball point pens and pencils.
- Do not attach protective sheet or sticker.
- Do not touch with fingernails.

Battery

- Under extreme temperatures such as in a closed car in summer, battery capacity lowers and battery time becomes shorter.
- If not using Battery for a long period, remove from handset and store away from high temperature and humidity.
- Battery may bulge near the end of its lifetime depending on usage. This is not a malfunction.
- Charge Battery before use when handset is used for the first time or when it is not used for a long time.
- Use tab when removing Battery. Failure to do so may damage Battery terminal.
- If Notification Lamp flashes in red, make sure that Battery is attached and connected properly.
- If Battery is not charged after a long time, charging fails and Notification Lamp turns off. Remove handset from AC Charger and charge again.
- When Battery is low, alert may appear and handset may power off. Handset cannot activate with empty Battery even while charging. Charge a while with power off and try to power on.

AC Charger (FMCAB1)

- Use accessory USB Cable with AC Charger.
- Unplug AC Charger if you are not going to use it.
- Grasp USB Plug to unplug it. Do not forcefully pull it out.
- Do not loop AC Charger cable around AC Charger or Desktop Holder. It may cause electric shock, overheating, or fire.
- Do not bend blades of AC Charger plug or connector and cable.
- If power plug of AC Charger is removed, attach it as shown below.



- Data communication using AC Charger USB Cable is not guaranteed.
- AC Charger is for indoor use only.

Camera

- Mind etiquette when using Camera.
- Do not expose Camera Lens to direct sunlight. Concentrated sunlight through Lens may cause handset to malfunction.
- SoftBank Mobile Corp. is not liable for damages from accidental loss/alteration/repair of handset/SD Card information (image files, etc.).
- Test Camera before capturing/recording special moments.
- Be considerate of privacy of others when taking/recording pictures/videos or sending images.
- Do not capture/record sold books or text prohibited from capturing/recording.

Copyrights

- Copyrights
The rights of copyright holders to literary works, music, still images, video, computer programs, databases, etc. are protected by copyright laws. You may copy these materials for private use only. Copying for purposes other than the above (including data format conversion), modifying, transferring copies, distributing on networks may be subject of compensation for losses or of prosecution for "copyright infringement" or "copyright holder rights infringement." If copying using this product, observe copyright laws. Handset is equipped with Cameras. Observe copyright laws when shooting with Cameras.
- Software contained in handset is copyrighted work including copyright holder rights and protected by copyright laws. Do not reproduce, modify, alter, disassemble, decompile or reverse engineer all or part of the software; do not separate it from hardware.
- Except where exempted by copyright laws, forwarding copyrighted images is prohibited.
- Except where exempted by copyright laws such as personal use, using and forwarding copyrighted images without copyright holder's authorization are prohibited. When disclosing recorded photographs of others to general public through Internet websites etc., take care with the copyrights or portrait rights. Note that taking photos or recording at demonstrations, performances or exhibitions may be prohibited even when only for personal use.
- Portrait Rights
Portrait rights protect individuals' right to refuse to be photographed or to refuse unauthorized publication/use of their photographs. Portrait rights consist of the right to privacy, which protects the interests of celebrities. Therefore, photographing others including celebrities and publicizing/distributing their photographs without permission is illegal; use Camera responsibly.

Note on Applications

- Installation of various applications is possible from Google Play™ provided by Google. SoftBank Mobile Corp. is not liable for application content (quality, reliability, legality, accuracy, etc.) or any problems (viruses, etc.) resulting from installation.

Urgent News (Japanese)

- Urgent News Incoming Setting is enabled by default.
- Urgent News messages appear in Japanese.
- Upon reception, alert tone sounds even in Manner mode.
- Urgent News messages cannot be received during calls or other transmissions, or in poor signal conditions. Message reception is available during 4G data communication.
- Urgent News accuracy may vary with signal conditions/handset location.
- Enabling Urgent News may reduce Continuous Standby Time.
- SoftBank Mobile Corp. is not responsible for any losses associated with Urgent News reception, etc.

Fingerprint Authentication

- Fingerprint Sensor is used for identifying the user. It may not function for fingerprints without strong characteristics.
- To save a fingerprint, scan the same finger 3 times or more. Always use the same finger.
- Accuracy may differ depending on various conditions. A wet, sweaty, or dry finger may affect accuracy or ability to save or identify a fingerprint. In such a case, washing/wiping hands, or changing fingers may improve accuracy.
- Place your first joint on center of sensor and slide it down until it passes through sensing area keeping it parallel to sensor. To avoid error, put your finger in the same direction as handset.
- Sliding too fast or too slow may prevent reading.
- Slide finger down centered on sensor.
- Error appears when fingerprint is not read correctly.
- Do not place your finger before starting saving or reading. Remove finger when activating.
- When connecting handset to a device requiring grounding such as a desktop PC with a USB cable, make sure it is grounded. If not, fingerprint authentication may be unavailable. Disconnect handset from it to authenticate.
- Fingerprint authentication technology does not guarantee complete identity authentication or verification. SoftBank Mobile Corp. is not responsible for any damages caused by use of handset or its unavailability.


Fingerprint Sensor

- Do not remove or poke protective film on Fingerprint Sensor with a pointed object such as a pen. It may reduce waterproof performance.
- Water or dirt on Fingerprint Sensor or your finger may cause malfunction.
- Do not hit or subject to strong impact. Doing so may cause damage or malfunction. Do not scratch or poke with pointed item.
- Scratching with mud, or muddying surface may cause damage or malfunction.
- Do not place sticker on surface or let surface get ink on it.
- Dust, oil, sweat, or condensation may affect accuracy. Keep Fingerprint Sensor clean.
- If errors reoccur, clean Fingerprint Sensor.
- Use a dry, soft and static-free cloth to clean surface. Do not use sharp-pointed items.
- Static electricity may cause malfunction. Before placing finger on sensor, eliminate static electricity by touching a metal object etc. Take particular care in dry seasons such as winter.

Bluetooth® Function

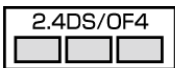
- Connection with all Bluetooth® devices is not guaranteed.
- Handset complies with Bluetooth® security standards, however, communication may be intercepted depending on the environment/settings. Take care when using Bluetooth®.
- SoftBank Mobile Corp. is not responsible for data leaked via Bluetooth® communication.
- Bluetooth® and Wi-Fi transmit on the same frequency band. Using Bluetooth® devices near handset may affect Wi-Fi transmission speed, availability and clarity. Should interference occur, disable either Bluetooth® or Wi-Fi.
- Bluetooth® devices operate on the same frequency band used by industrial or scientific machinery, consumer electronics (like microwave ovens), medical equipment, (licensed) premises radio stations used to identify mobile units used in manufacturing lines, (unlicensed) specified low power radios and (licensed) amateur radios.
 1. Before using handset Bluetooth® functions, confirm that premises radio stations, specified low power radios, and amateur radios are not in use nearby.
 2. If handset Bluetooth® function use interferes with premises radio stations, immediately change frequency band, or halt usage and take steps (set up a partition, etc.) to prevent crosstalk.
 3. If handset Bluetooth® function use interferes with specified low power radios or amateur radios, contact SoftBank Customer Support, General Information.
- Bluetooth® function uses frequencies in the 2.4 GHz band ranging from 2,400 MHz to 2,483.5 MHz.




- 2.4FH1/XX1
 Frequency Band: 2.4 GHz
 Modulations: FH-SS or other modulations
 Estimated Range of Radio Frequency Interference: up to 10 m
 : Utilizes 2,400 MHz to 2,483.5 MHz band without mobile device bandwidth differentiation
- When using Bluetooth® function in other countries, check local regulations beforehand.
- For use in an airplane, contact your airline.
- Communication speed and connectable range vary by conditions.


Wi-Fi (Wireless LAN)

- Connection with all Wi-Fi devices is not guaranteed.
- Handset complies with Wi-Fi security standards, however, communication may be intercepted depending on the environment/settings. Take care when using Wi-Fi.
- SoftBank Mobile Corp. is not responsible for data leaked via Wi-Fi communication.
- Wi-Fi devices operate on the same frequency band used by industrial or scientific machinery, consumer electronics (like microwave ovens), medical equipment, (licensed) premises radio stations used to identify mobile units used in manufacturing lines, (unlicensed) specified low power radios and (licensed) amateur radios.
 1. Before using Wi-Fi, confirm that premises radio stations, specified low power radios, and amateur radios are not in use nearby.
 2. If Wi-Fi use interferes with premises radio stations, immediately change frequency band, or halt usage and take steps (set up a partition, etc.) to prevent crosstalk.
 3. If Wi-Fi use interferes with specified low power radios or amateur radios, contact SoftBank Customer Support, General Information.
- Wi-Fi uses frequencies in the 2.4 GHz band ranging from 2,400 MHz to 2,483.5 MHz.



- 2.4DS/OF4
Frequency Band: 2.4 GHz
Modulations: DS-SS, OFDM
Estimated Range of Radio Frequency Interference: up to 40 m
 : Utilizes 2,400 MHz to 2,483.5 MHz band with mobile device bandwidth differentiation
- Available channels may vary by country.
- For use in an airplane, contact your airline.
- When using Wi-Fi in other countries, check regulations beforehand.
- Do not use Wi-Fi near magnetic devices such as electrical appliances or AV/OA devices.
- Magnetic/radio waves may hinder or disable communication. Avoid microwave ovens.
- Use near a TV or radio, etc. may cause interference; may affect TV reception.
- If there are multiple Wi-Fi access points using the same channel, search may fail.
- The three channels of W52, W53 and W56 can be used on 5 GHz frequency band. W52 and W53 are prohibited from outdoor use under the Radio Law.

What if Handset Freezes

- If handset deactivates, freezes, or does not accept any input (Rebooting erases data being edited):
Remove Battery → Wait for several seconds → Insert Battery →  (Long Press).

Waterproofing/Dustproofing

Water and Dust Resistance

Handset complies with IPX5*1, IPX8*2 waterproof standards and IP5X*3 dustproof standard with Battery Cover, and External Device Port Cover firmly closed.

- *1 Protection against water jet (at 12.5 L/min. from every direction from a distance of approximately 3 m for over 3 minutes through 6.3 mm nozzle)
- *2 Protection against seepage when slowly submerged in still tap water at room temperature to depth of 1.5 m for 30 minutes
- *3 Protection against dust (in a device containing dust particles with a diameter of 75 μm or less, agitated for 8 hours)
- Note: Complete protection is not guaranteed under all conditions. Malfunctions due to improper handling by the user are not covered by Warranty.

Precautions

- Do not place handset directly on beach.
 - Sand may enter Mic, Earpiece, Speaker, or Earphone Port which may distort sound or cause overheating, malfunction.
- Make sure to securely close External Device Port Cover and attach Battery Cover.
- A fine particle (a hair, grain of sand, tiny fiber, etc.) between External Device Port Cover, Battery Cover and handset may allow water to enter.
- Drain water and thoroughly wipe off any water when removing Battery Cover.
- Do not use handset with Earphone Port wet or sand or dust inside.
- Do not use handset under water.
- Do not leave handset in a humid place such as a bathroom, kitchen etc. for a long time.
- Handset complies with water resistance specifications only for tap water at room temperature. Do not splash or soak in:
 - Water containing soap, detergent, bath salts
 - Seawater
 - Pool water
 - Hot spring water
 - Boiled water
 - Chemicals
 - Perspiration
- To avoid seepage, do not:
 - Remove rubber seals.
 - Pinch rubber seals when closing External Device Port Cover or Battery Cover.
 - Open/close External Device Port Cover or Battery Cover with gloves on.
 - Leave fine particles (a hair, grain of sand, tiny fiber, etc.) between External Device Port Cover, Battery Cover and handset.
 - Insert sharp-edged objects into gaps around External Device Port Cover or Battery Cover.
- Replacing parts every two years regardless of handset performance is recommended (at cost). Contact SoftBank Shop or SoftBank Customer Support, General Information.
- Rinse seawater, detergent, sand, mud, etc. off with tap water.
- When washing handset, make sure to securely close External Device Port Cover and Battery Cover. Do not use a brush or sponge.
- Do not wash Earphone Port Area.
- Do not wash handset in a washing machine.
- If handset gets wet, drain water and wipe off water from handset with a clean dry cloth.
- Do not leave handset wet.
 - Doing so may cause short circuit with External Device Port.
 - Do not leave Earphone Port wet.
 - In cold climates, freezing may cause malfunction.
- Water may leak into Earphone Port or Keypad. Shake handset to flick water away and wipe off from Keypad with a clean dry cloth.
- Before using Earphone, make sure that Earphone Port is dry.
- Desktop Holder and AC Charger are not water and dust resistant. Do not charge wet handset. When charging, drain and wipe off water before inserting into Desktop Holder or opening External Device Port Cover.
- If charging Battery with External Device Port Cover opened, make sure to firmly close External Device Port Cover after charging. To avoid seepage, using Desktop Holder is recommended.
- Do not charge wet handset. Doing so may cause electric shock, fire or malfunction due to short circuit.
- Do not touch Desktop Holder or AC Charger with wet hands. Doing so may cause electric shock.
- Keep Desktop Holder and AC Charger away from water. Failure to do so may cause fire or electric shock.
- Do not use Desktop Holder and AC Charger in a humid place such as a bathroom, kitchen, etc. Doing so may cause fire or electric shock.
- Do not soak handset in hot spring water, water with soap, detergent, bath salts, etc. Also do not leave handset under water for a long time. Doing so may cause malfunction.
- Do not insert/remove Battery or open/close External Device Port Cover with wet hands or when handset gets wet.
- Handset is not heat resistant. Do not immerse handset in hot water, use it in a sauna or dry it with hot air (e.g. a dryer).
- Handset is not shock resistant. Do not drop handset or subject it to excessive shock. Do not poke Mic, Earpiece, or Speaker with cotton swab or sharp-edged object. May affect waterproofing/dustproofing.
- Do not apply excessive amount of water to handset.
- Handset does not float.
- Handset is waterproof and dustproof only in the temperatures of 5°C to 40°C (only temporary use is available at 36°C to 40°C) and humidity of 35% to 90%.
- If External Device Port or Battery Cover is damaged, replace it with a new one. May result in electric shock or corrosion of Battery due to seepage.
- If handset gets wet with External Device Port Cover, or Battery Cover open, seepage may occur. In such case, power off handset, remove Battery and bring it to a SoftBank Shop or contact SoftBank Customer Support, General Information.
- Do not leave water in Mic, Earpiece, Speaker or Earphone Port. May cause malfunction.
- Do not leave water in Temperature/Humidity Sensor. Temperature/humidity may not be detected correctly.

General Notes

General Use

- If USIM Card/handset with USIM Card installed is lost or stolen, contact SoftBank Customer Support or Global Call Center.
- SoftBank Mobile Corp. is not liable for damages from accidental loss/alteration/repair of handset/SD Card information (Contacts, image/sound files, etc.). Back up important information.
- Handset transmissions may be disrupted inside buildings, tunnels or underground, or when moving into/out of such places.
- Use handset without disturbing others.
- Handsets are radios as stipulated by the Radio Law. Under the Radio Law, handsets must be submitted for inspection upon request.
- Handset use near landlines, TVs or radios may cause interference.
- Read SD Card manual beforehand for proper use.
- Beware of eavesdropping.
Digital signals reduce interception, however transmissions may be overheard. Deliberate/accidental interception of communications constitutes eavesdropping.
"Eavesdropping" means radio communication is received by another receiver deliberately or accidentally.

Electromagnetic Safety

For body-worn operation, this phone has been tested and meets RF exposure guidelines when used with accessories containing no metal, that position handset a minimum of 15 mm from the body. Use of other accessories may not ensure compliance with RF exposure guidelines.

FCC Notice

- This device complies with part 15 of the FCC Rules. Operation is subject to the following two conditions:
(1) This device may not cause harmful interference, and
(2) this device must accept any interference received, including interference that may cause undesired operation.
- Changes or modifications not expressly approved by the manufacturer responsible for compliance could void the user's authority to operate the equipment.
- The device complies with 15.205 of the FCC Rules.

Note:

This equipment has been tested and found to comply with the limits for a Class B digital device, pursuant to part 15 of the FCC Rules. These limits are designed to provide reasonable protection against harmful interference in a residential installation. This equipment generates, uses, and can radiate radio frequency energy and, if not installed and used in accordance with the instructions, may cause harmful interference to radio communications.

However, there is no guarantee that interference will not occur in a particular installation. If this equipment does cause harmful interference to radio or television reception, which can be determined by turning the equipment off and on, the user is encouraged to try to correct the interference by one or more of the following measures:

- Reorient or relocate the receiving antenna.
- Increase the separation between the equipment and receiver.
- Connect the equipment into an outlet on circuit different from that to which the receiver is connected.
- Consult the dealer or an experienced radio/TV technician for help and for additional suggestions.

FCC RF Exposure Information

Your handset is a radio transmitter and receiver. It is designed and manufactured not to exceed the emission limits for exposure to radio frequency (RF) energy set by the Federal Communications Commission of the U.S. Government.

The guidelines are based on standards that were developed by independent scientific organization through periodic and thorough evaluation of scientific studies. The standards include a substantial safety margin designed to assure the safety of all persons, regardless of age and health.

The exposure standard for wireless handsets employs a unit of measurement known as the Specific Absorption Rate, or SAR.

The SAR limit set by the FCC is 1.6 W/kg. The tests are performed in positions and locations (e.g. at the ear and worn on the body) as required by the FCC for each model.

The highest SAR value for this model handset as reported to the FCC when tested for use at the ear is 0.443 W/kg, and when worn on the body in a holder or carry case, is 0.513 W/kg.

Body-worn Operation; This device was tested for typical body-worn operations with the back of the handset kept 1.0 cm from the body. To maintain compliance with FCC RF exposure requirements, use accessories that maintain a 1.0 cm separation distance between the user's body and the back of the handset. The use of beltclips, holsters and similar accessories should not contain metallic components in its assembly.

The use of accessories that do not satisfy these requirements may not comply with FCC RF exposure requirements, and should be avoided. The FCC has granted an Equipment Authorization for this model handset with all reported SAR levels evaluated as in compliance with the FCC RF emission guidelines. SAR information on this model handset is on file with the FCC and can be found under the Display Grant section of <http://www.fcc.gov/oet/ea/> after searching on FCC ID YUW-201F.

Additional information on Specific Absorption Rates (SAR) can be found on the FCC website at <http://transition.fcc.gov/oet/rfsafety/>.

European RF Exposure Information

Your mobile device is a radio transmitter and receiver. It is designed not to exceed the limits for exposure to radio waves recommended by international guidelines. These guidelines were developed by the independent scientific organization ICNIRP and include safety margins designed to assure the protection of all persons, regardless of age and health.

The guidelines use a unit of measurement known as the Specific Absorption Rate, or SAR. The SAR limit for mobile devices is 2.0W/kg and the highest SAR value for this device when tested at the ear was 0.562 W/kg*. As mobile devices offer a range of functions, they can be used in other positions, such as on the body as described in this User Guide**. In this case, the highest tested SAR value is 0.378 W/kg***. As SAR is measured utilizing the devices highest transmitting power the actual SAR of this device while operating is typically below that indicated above. This is due to automatic changes to the power level of the device to ensure it only uses the minimum level required to reach the network.

The World Health Organization has stated that present scientific information does not indicate the need for any special precautions for the use of mobile devices. They note that if you want to reduce your exposure then you can do so by limiting the length of calls or using a hands-free device to keep the mobile phone away from the head and body.

*The tests are carried out in accordance with international guidelines for testing.

** Please see [Electromagnetic Safety](#) for important notes regarding body worn operation.

*** A method of measuring SAR when a mobile phone is used at positions other than at the ear was established in March 2010 through an international standard (IEC62209-2). MIC technical regulation was reported in October 2011 by the Information and Communications Council.

World Health Organization

<http://www.who.int/emf>

List of Specific Absorption Rates (SAR) for radio waves by smartphone model

<http://mb.softbank.jp/mb/support/sar/> (Japanese)

Warning

This device have been tested to comply with the Sound Pressure Level requirement laid down in the applicable EN 50332-1 and/or EN 50332-2 standards. Permanent hearing loss may occur if earphones or headphones are used at high volume for prolonged periods of time.

Prevention of Hearing Loss

Warning statement requirement under EN 60950-1:A12.



Warning: To prevent possible hearing damage, do not listen to high volume levels for long periods.

RF Exposure Information/Specific Absorption Rate (SAR) Information

RF Exposure Information/Specific Absorption Rate* (SAR) Information

This mobile phone 201F meets the MIC's**** technical regulation for exposure to radio waves.

The technical regulation* established permitted levels of radio frequency energy, based on standards developed by independent scientific organizations through periodic and thorough evaluation of scientific studies.

The regulation employs a unit of measurement known as the Specific Absorption Rate, or SAR.

The SAR limit is 2 watts/kilogram (W/kg)** averaged over ten grams of tissue.

The limit includes a substantial safety margin designed to assure the safety of all persons, regardless of age and health.

The value of the limit is equal to the international guidelines recommended by ICNIRP****.

The highest SAR value for this mobile phone is 0.453 W/kg when tested for use at the ear.

While there may be differences between the SAR levels of various phones and at various positions, all phones meet MIC's technical regulation.

Although the SAR is determined at the highest certified power level, the actual SAR of the phone during operation can be well below the maximum value.

Use at positions other than at the ear

This mobile phone may be used at positions other than at the ear. By using an accessory such as a belt clip holster that maintains a 1.0 cm separation with no metal (parts) between the body and the mobile phone, this mobile phone will comply with international guidelines for radio wave protection (***).

The World Health Organization has announced that "A large number of studies have been performed over the last two decades to assess whether mobile phones pose a potential health risk. To date, no adverse health effects have been established as being caused by mobile phone use."

For more information about SAR, see the following websites:

- Ministry of Internal Affairs and Communications (MIC)
<http://www.tele.soumu.go.jp/e/sys/ele/body/index.htm>
- Association of Radio Industries and Businesses (ARIB)
<http://www.arib-emf.org/index02.html> (Japanese)

* The technical regulation is provided in Article 14-2 of the Ministry Ordinance Regulating Radio Equipment.

** Provided for in "Radio-radiation protection guidelines", reported in 1997 by the Telecommunications Technology Council, Ministry of Posts and Telecommunications.

*** A method of measuring SAR when a mobile phone is used at positions other than at the ear was established in March 2010 through an international standard (IEC62209-2). MIC technical regulation was reported in October 2011 by the Information and Communications Council.

**** Ministry of Internal Affairs and Communications

***** International Commission on Non-Ionizing Radiation Protection

Standards of the Federal Communications Commission (FCC) of the U.S. Government and information from the E.U. are given as information relating to RF exposure. For details, see "[FCC RF Exposure Information](#)" and "[European RF Exposure Information](#)".

201F User Guide Index

A	
About Settings.....	62
Accounts & Sync Settings.....	65
Address Book.....	42
Application Settings.....	65
B	
Basic Operations.....	20
Battery Installation.....	13
Bluetooth®.....	58
C	
Calling.....	36
Calling Outside Japan.....	60
Charging Battery.....	15
Creating/Sending Gmail.....	47
Creating/Sending Mail/SMS.....	45
Customer Service.....	68
G	
General Notes.....	82
Google Account.....	24
Google Play™.....	25
H	
Handset Phone Number.....	21
Home Screen Basics.....	32
I	
Image Files.....	56
Imaging.....	52
Important Product Information.....	76
Internet Mail Settings.....	48
Introduction.....	3
M	
Messaging.....	44
Mobile Manners.....	21
Music Files.....	56
N	
Notifications Window.....	34
O	
Optional Services.....	37

P

Package Contents.....	6
Parts & Functions.....	6
Power On/Off.....	16

R

RF Exposure Information/Specific Absorption Rate (SAR) Information.....	84
---	----

S

Safety Precautions.....	70
Screen Lock.....	28
SD Card Installation.....	10
Security Codes.....	26
Software Updates.....	28
Sound and Vibration Settings.....	64
Specifications.....	68
Status Bar.....	32

T

Text Entry.....	22
Touchscreen Operations.....	17

U

USIM Card Installation.....	8
USIM PIN.....	27
Using NX! Mail.....	44

W

Waterproofing/Dustproofing.....	80
Web Browsing.....	48
Wi-Fi.....	58
Wi-Fi Settings.....	63

SoftBank 201F User Guide

March 2013, First Edition
SoftBank Mobile Corp.

Visit [SoftBank Shop](#) for assistance

Model : SoftBank 201F
Manufacturer : Fujitsu Mobile Communications Limited