

6

Utility Software Guide

Overview	6-2
Installing Utility Software	6-2
Operating Utility Software	6-2
Modem Status	6-3
Verification/Changing of Settings	6-4
Common Setting	6-4
Connection	6-5
Preferred Mode	6-6
PIN	6-6
Information	6-7
Help	6-8

Overview

Utility Software functions to confirm and change 4G/3G connection settings for Mobile Routers connected to PCs via USB Cables.

Besides Utility Software, Web UI functions to confirm and change Mobile Router's settings. For details on Web UI, see Chapter 5 "Web UI Guide".

Installing Utility Software

Utility Software automatically installs itself when Mobile Router is initially connected to a PC. See "Installing Utility Software" in Chapter 3 or 4 for detailed installation procedures.

If USB Connection Mode is in "Charging Mode," utility cannot be installed. To confirm USB Connection Mode, see Web UI "System Settings" (P.5-16).

When Utility Software and device drivers are upgraded, the currently installed Utility Software and device drivers cannot be reinstalled unless they have been uninstalled. See "Uninstalling Utility Software" in Chapter 3 or 4 for detailed uninstallation procedures.


Operating Utility Software

Operating on Windows

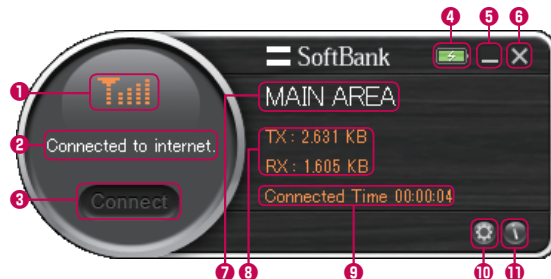
- 1 Power on Windows PC
- 2 Connect Mobile Router to Windows PC via USB Cable
- 3 Click **Start** → **All Programs** → **Softbank 101SI Utility** → **Softbank 101SI Utility**

Utility Software screen appears.

Operating on Mac

- 1 Power on Mac
- 2 Connect Mobile Router to Mac via USB Cable
- 3 Click  to open Finder
- 4 Click **101SI Utility**

Utility Software screen appears.



Utility Software Guide

No.	Item	Description
1	Signal Strength	Signal Strength of 4G/3G network.
2	Modem Status	See "Modem Status" (P.6-3).
3	Connect	If connected to Internet, it is unlit. When lit, click to connect to Internet.
4	Battery Strength	Battery charging status (Charging/Fully charged)
5	Minimize	Hides Utility Software's main page. Tray icon only.
6	Close	Closes Utility Software.
7	Available Service	MAIN AREA: SoftBank data transfer service is available.
8	Packet Usage Rate Information	Received and sent packet rate. TX: Transmission (uploads) packet volumes RX: Reception (downloads) packet volumes
9	Connected Time	Connected time for this connection.
10	Setting	Check and change settings. See "Verification/Changing of Settings" (P.6-4).
11	Program Information	Software version.

Signal Strength	
No service	
Very weak	
Weak	
Normal	
Strong	

Battery Strength	
Charging	
Fully charged	

Modem Status

Status	Message
Device Status	Can not detect device
	The modem is initializing
	Failed to initialize the modem
	Device is Connected
Internet Connection Status	Connecting...
	Connected to internet
	Disconnecting...
	Disconnected from internet
	Failed in dialing up
	Line is busy now. Please try later
PIN Status	Service is not available now
	PIN Code is verified
	PIN Code is not verified
	PIN Locked
	Invalid USIM
	No USIM Card
	PUK Lock USIM
	USIM Initialize Fail
	Unknown USIM

Verification/Changing of Settings



No.	Item	Description
1	Common Setting	Select a language.
2	Connection	Add/edit/delete access points.
3	Preferred Mode	Set a connection network.
4	PIN	Set PIN.
5	Information	Phone number, software version.
6	Help	Website information.

Common Setting

Language setting can be changed from this menu.



No.	Item	Description
1	Japanese	Set Utility Software language to Japanese.
2	English	Set Utility Software language to English.
3	Set	Save this page's settings.

■ Connection

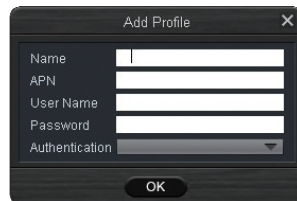
Add/edit/delete access points for network (MAIN AREA).



No.	Item	Description
①	Connection list title	MAIN AREA Connection List
②	Connection list Toggle button	Cannot be used with Mobile Router.
③	MAIN AREA Connection List	Choose connection list to add/edit/delete.
④	Add/Edit/Delete	Add a new Connection to list. Edit a Connection in list. Delete a Connection from list.
⑤	Set default	Set chosen connection list as default.

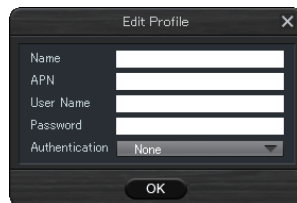
<Add>

Click **Add**, and Add Profile window appears. Save APN obtained from network operator. Enter User Name, Password, Authentication, if necessary.



<Edit>

Select Profile from saved list, then click **Edit**. Change current Profile.



<Delete>

Select Profile from saved list and click **Delete** to remove it from modem.

<Set default>

Select Profile from saved list, then click **Set default**.

Preferred Mode

Select connection destination network (4G/3G).



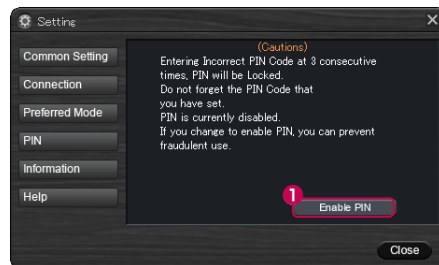
No.	Item	Description
1	Auto	Cannot be used with Mobile Router.
2	MAIN AREA (4G/3G)	Automatically connects between main area 4G/3G.
3	MAIN AREA (4G Single)	Connects via main area 4G.
4	MAIN AREA (3G Single)	Connects via main area 3G.
5	SUB AREA (3G Single)	Cannot be used with Mobile Router.
6	Set	Save this page's setting.

PIN

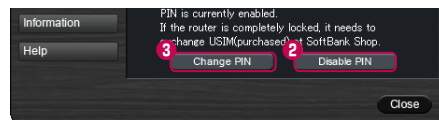
Enable/Disable PIN Authentication or change PIN. (See "PIN" in "General Notes".)

PIN Authentication Setting

The current PIN is required to Enable/Disable PIN Authentication.



Button display changes via toggling of Enable PIN/Disable PIN.

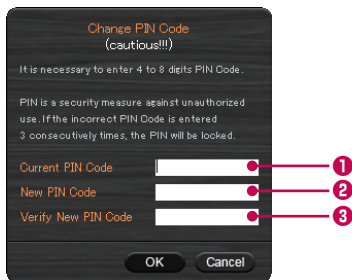


No.	Item	Description
1	Enable PIN	Enable PIN authentication.
2	Disable PIN	Disable PIN authentication.
3	Change PIN	Changes PIN.

Utility Software Guide

Change PIN

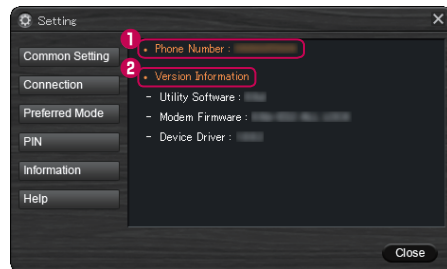
When PIN is enabled, user can change PIN. Enter Current PIN first, and New PIN second for verification. Input PIN needs to be 4-8 digits.



No.	Item	Description
①	Current PIN Code	Enter current PIN to be changed.
②	New PIN Code	Enter new PIN.
③	Verify New PIN Code	Re-enter new PIN to confirm.

Information

This menu shows phone number and software version.



No.	Item	Description
①	Phone Number	User phone number
②	Version Information	Utility Software Modem Firmware Device Driver

■ Help

Shows website URLs.

