



101SH User Guide

101SH User Guide Contents

Introduction

Introduction.....	3
-------------------	---

Getting Started

Package Contents.....	6
Parts & Functions.....	6
About USIM Card.....	7
SD Card.....	9
Battery Installation.....	13
Charging Battery.....	14
Handset Power On/Off.....	15
Slider Positions.....	16
Using Handset Keys.....	17
Using Touch Panel.....	18

Basic Operations

Handset Interface.....	20
Applications.....	21
My Phone Number.....	23
Mobile Manners.....	24
Text Entry (Handset Keys).....	24
Text Entry (Touch Panel).....	26
Using Google Accounts.....	28
Android Market™.....	29
Security Codes.....	31
USIM PIN.....	32
Sleep Mode.....	33
Software Update.....	33

Handset Interface

Home Screen Basics.....	36
Standby Basics.....	37
Launcher Basics.....	38
Status Bar.....	39
Notifications Panel.....	40
Customizing Home Screen.....	41
Customizing Standby.....	43

Phone

Placing/Answering Calls.....	46
Optional Services.....	47
Using Address Book.....	52

Messaging & Browser

Mail Types.....	56
Sending S! Mail/SMS.....	56
Receiving & Replying S! Mail/SMS.....	58
Handling S! Mail/SMS.....	60
Creating/Sending Gmail.....	60
Opening Received Gmail.....	61
Email Settings.....	62
Creating/Sending Email.....	63
Opening Received Email.....	63
Browsing the Internet.....	64

Camera

Photo Camera.....	68
Video Camera.....	69

Music & Images

Music.....	72
Still Images & Video.....	72

Connectivity

Connecting to Wi-Fi.....	74
Using Bluetooth®.....	76

Global Services

Global Roaming.....	80
Calling from Outside Japan.....	80

Settings

Wireless & Network Settings.....	84
Call Settings.....	86
Sound Settings.....	86
Application Settings.....	88
Accounts & Sync Settings.....	89
Privacy Setting.....	89
Language & Keyboard Settings.....	90
Date & Time Settings.....	91
About Phone.....	91

Appendix

Specifications.....	94
Customer Service.....	95

Safety Precautions

Safety Precautions.....	98
Important Product Information.....	104
Handset & Hardware Care.....	106
General Notes.....	108
FCC Notice.....	109
Specific Absorption Rate (SAR).....	110
Water & Dust Resistance.....	110

Introduction

Thank you for purchasing SoftBank 101SH.

Before You Begin

For proper handset use, read "Quick Tips" (in お問い合わせ) and this guide beforehand.

- Accessible SoftBank Mobile services may vary by subscription, etc.
- SoftBank 101SH is compatible with 3G network technology; supports international roaming where 3G network coverage is available (3G areas).

Guide Usage Notes

- Most operation descriptions are based on default settings.
- Unless noted otherwise, descriptions are for Home Screen Touch Panel operations with Slider closed.
- Some operation descriptions may be omitted.
- In this guide and on handset, "abroad" means "outside Japan" with regard to handset/service usage.
- In this guide, microSD/microSDHC Card is referred to as "SD Card."

Screenshots & Key Labels

Actual handset windows, menus, etc. may differ in appearance. Key labels are simplified for reference convenience.

Accessing Guide on Handset

Access this Guide on handset via Guide icon in Standby or via Guide indicator on Status Bar. Guide indicator appears on Status Bar by default. Follow these steps to hide Guide indicator: When Guide indicator appears, press **[MENU]** →

Indicator → **Off**

Getting Started

Package Contents.....	6
Parts & Functions.....	6
About USIM Card.....	7
SD Card.....	9
Battery Installation.....	13
Charging Battery.....	14
Handset Power On/Off.....	15
Slider Positions.....	16
Using Handset Keys.....	17
Using Touch Panel.....	18

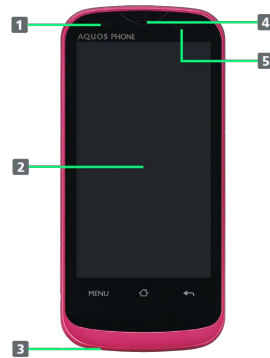
Package Contents

Package Contents

- Handset (SoftBank 101SH)
- Battery (SHBEC1)
- Micro USB Cable (SHDDL1)
- Micro USB Charging Adapter (SHCDL1)
- microSD Card (complimentary sample)
- クイックスタート (Japanese)
- お願いとご注意 (Japanese) with English "Quick Tips"
- Warranty (Japanese)

Parts & Functions

Handset Parts



- 1** Notification Lamp
- 2** Display
- 3** Microphone (below hard keys)
- 4** Earpiece
- 5** Proximity/Light Sensor



- 1** Camera
- 2** Infrared Port
- 3** Battery Cover
- 4** Strap Eyelet
- 5** Battery Cover Notch
- 6** Speaker
- 7** FeliCa Logo
- 8** External Connector Port

Handset Keys



- 1** Long Press for Power on or Phone options
- 2** Open Home Screen
- 3** Select items, move cursor, etc.
- 4** Open Options menu
- 5** Open Mail Folder list*; execute functions at bottom left of Display
- 6** Open Launcher*; execute selected item
- 7** Show onscreen dialpad; place call
- 8** Delete characters
- 9** Go back/escape
- 10** Activate/cancel Sleep mode. Long Press for Phone options.
- 11** Access the Internet*; execute functions at bottom right of Display
- 12** Adjust volume
- 13** 0 - 9 / * / # Enter numbers/text

- *Available in Standby; for key operations in Standby, see "[Major Key Assignments \(Standby\)](#)."
- This guide uses the illustrations above to represent handset keys.

About USIM Card

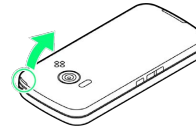
USIM Card is an IC card containing customer and authentication information, including handset number.

Inserting USIM Card

Power off first.

1

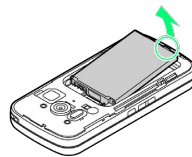
Remove Battery Cover



- Use Battery Cover notch to open Cover as shown. Push Cover up gradually to remove it.

2

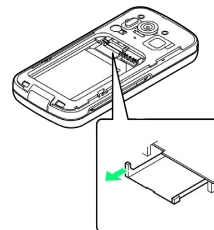
Remove battery



- Use tab (O) to lift battery.

3

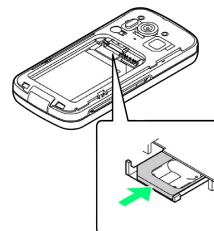
Pull out Tray



- Use tab to pull Tray straight out.
- Pulling out forcefully may cause breakage.

4

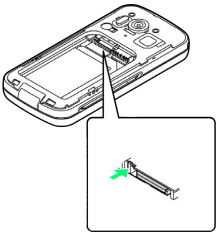
Place USIM Card in Tray



- Slide in Tray with USIM Card IC chip up.

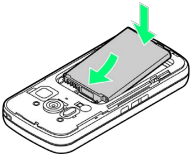
5

Secure Tray



6

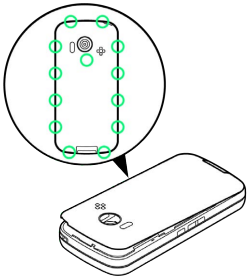
Insert battery



- With recycling symbol up, align battery terminals with contacts.

7

Replace Battery Cover



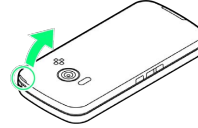
- Align External Connector Port sides, then press down firmly along edges.
- Close Battery Cover firmly. Debris trapped between Cover gasket and base may expose handset to liquid/dust.

Removing USIM Card

Power off first.

1

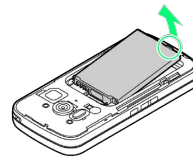
Remove Battery Cover



- Use Battery Cover notch to open Cover as shown. Push Cover up gradually to remove it.

2

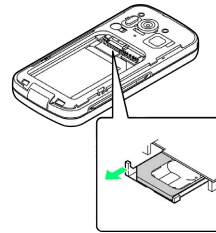
Remove battery



- Use tab (○) to lift battery.

3

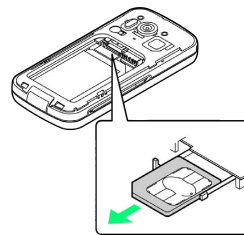
Pull out Tray



- Use tab to pull Tray straight out.
- Pulling out forcefully may cause breakage.

4

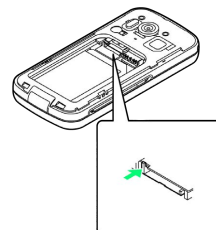
Remove USIM Card



- Slide out USIM Card.

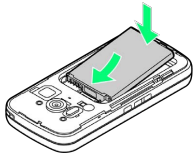
5

Secure Tray



6

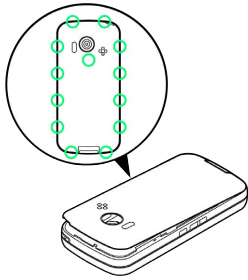
Insert battery



- With recycling symbol up, align battery terminals with contacts.

7

Replace Battery Cover



- Align External Connector Port sides, then press down firmly along edges.
- Close Battery Cover firmly. Debris trapped between Cover gasket and base may expose handset to liquid/dust.

SD Card

SoftBank 101SH supports SD Card up to 32 GB. However, some SD Cards may not operate properly.

Unmounting SD Card

Always perform Unmount microSD before removing SD Card. (Complimentary SD Card preinstalled.)

1

In Home Screen, **MENU** → **Settings**



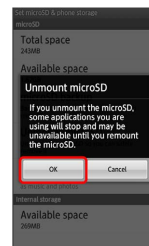
2


microSD & phone storage



3

Unmount microSD → **OK**



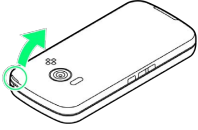
 SD Card is unmounted.

Removing SD Card

Power off first.

1

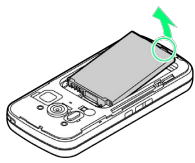
Remove Battery Cover



- Use Battery Cover notch to open Cover as shown. Push Cover up gradually to remove it.

2

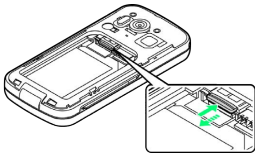
Remove battery



- Use tab (○) to lift battery.

3

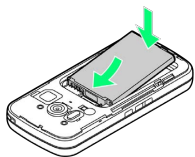
Remove SD Card



- Gently push in card and release it; card pops out. Pull card straight out gently.

4

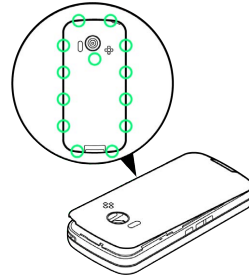
Insert battery



- With recycling symbol up, align battery terminals with contacts.

5

Replace Battery Cover



- Align External Connector Port sides, then press down firmly along edges.
- Close Battery Cover firmly. Debris trapped between Cover gasket and base may expose handset to liquid/dust.

Inserting SD Card

Power off first.

1

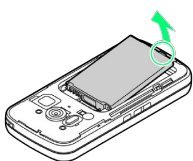
Remove Battery Cover



- Use Battery Cover notch to open Cover as shown. Push Cover up gradually to remove it.

2

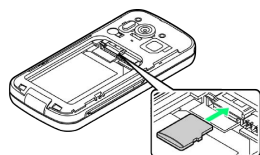
Remove battery



- Use tab (○) to lift battery.

3

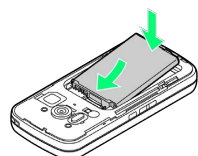
Insert SD Card



- With terminals down, insert SD Card until it stops.
- SD Card Slot is located above USIM Card Slot. Do not insert SD Card into USIM Card Slot.

4

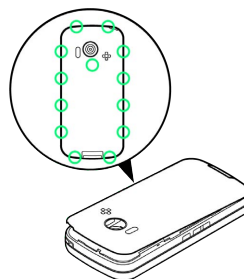
Insert battery



- With recycling symbol up, align battery terminals with contacts.

5

Replace Battery Cover



- Align External Connector Port sides, then press down firmly along edges.
- Close Battery Cover firmly. Debris trapped between Cover gasket and base may expose handset to liquid/dust.

Formatting SD Card

When using a new SD Card for the first time, format it on handset before trying to save files, etc.

- Formatting deletes all SD Card files, even those created on other devices.
- Charge battery or install a charged battery beforehand.

1

In Home Screen, MENU → Settings



2

microSD & phone storage



3

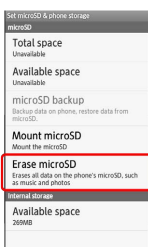
Unmount microSD → OK



Unmount microSD changes to Mount microSD .

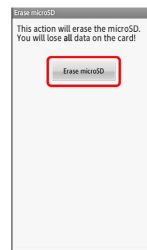
4

Erase microSD



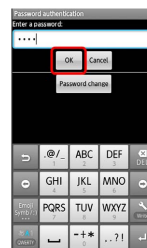
5

Erase microSD



6

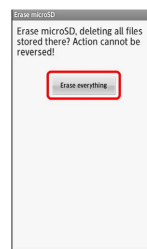
Enter Handset Code → OK



- If Handset Code is unset, follow onscreen instructions.

7

Erase everything



Formatting starts.

SD Card Slot

SD Card Slot is located above USIM Card Slot. Do not insert SD Card into USIM Card Slot.

Important SD Card Usage Note

SD Card files may be lost/alterd accidentally. Keep a copy of contacts, etc. in a separate place. SoftBank Mobile is not liable for any damages resulting from accidental loss/alteration of information.

- Never power off or remove battery while files are being accessed.

General Use

Keep SD Card out of infants' reach; may cause suffocation if swallowed.

Battery Installation

Inserting Battery

1

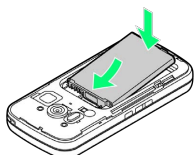
Remove Battery Cover



- Use Battery Cover notch to open Cover as shown. Push Cover up gradually to remove it.

2

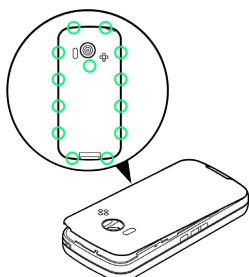
Insert battery



- With recycling symbol up, align battery terminals with contacts.

3

Replace Battery Cover



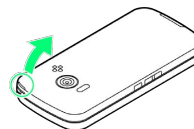
- Align External Connector Port sides, then press down firmly along edges.
- Close Battery Cover firmly. Debris trapped between Cover gasket and base may expose handset to liquid/dust.

Removing Battery

Power off first.

1

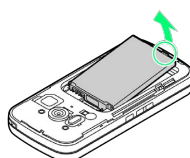
Remove Battery Cover



- Use Battery Cover notch to open Cover as shown. Push Cover up gradually to remove it.

2

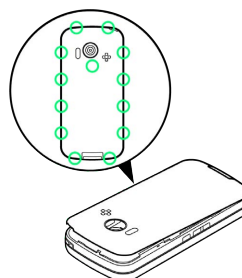
Remove battery



- Use tab (○) to lift battery.

3

Replace Battery Cover



- Align External Connector Port sides, then press down firmly along edges.
- Close Battery Cover firmly. Debris trapped between Cover gasket and base may expose handset to liquid/dust.



Lithium-ion Battery

This product requires a lithium-ion battery. Lithium-ion batteries are recyclable. To recycle a used lithium-ion battery, take it to any shop displaying the symbol below.

- To avoid fire or electric shock, do not short-circuit or disassemble battery.



! Battery Usage Notes

General

Charge battery at least once every six months; uncharged battery may die or affect files/settings.

Battery Life

Replace battery if operating time shortens noticeably.

- Depending on usage, bulges may appear near end of battery life; this does not affect safety.

Maintenance

Clean device charging terminals with dry cotton swabs.

Battery Cover

To maintain water/dust resistance, close Battery Cover properly. Do not apply excessive force to Battery Cover; damage may result.

- If Battery Cover is damaged, replace it with a new one. Use of damaged Cover may cause electric shock, battery corrosion, etc. due to water seepage. (Battery is not water or dustproofed.)

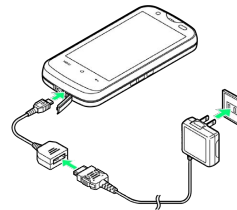
Charging Battery

Battery must be inserted in handset to charge it.

AC Charger

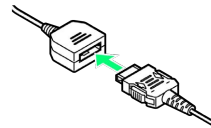
Use Micro USB Charging Adapter with AC Charger ZTDAA1 (sold separately).

- Micro USB Charging Adapter and AC Charger are not water or dustproofed. Do not charge battery while handset is wet.



1

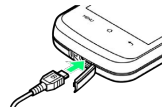
Insert Charger Connector into Micro USB Charging Adapter



- Confirm connector orientation, then insert connector until it clicks.

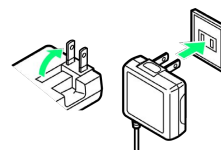
2

Open Port Cover and insert Micro USB Charging Adapter into External Connector Port



3

Extend blades and plug AC Charger into AC outlet



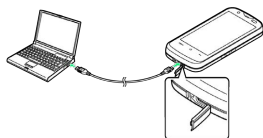
🚩 Notification Lamp illuminates while charging.

- Notification Lamp goes out when battery is full. Unplug AC Charger and retract blades. Remove Micro USB Charging Adapter and close Port Cover.

USB Charge

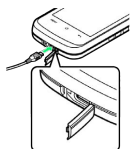
Connect handset to a PC via Micro USB Cable.

- Power on handset and PC first.
- To use Fast transfer mode, install USB Cable driver on the PC beforehand.
- Battery may not charge or charge slowly depending on PC status/environment. Battery may not charge if SD Card is not inserted.



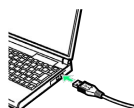
1

Open Port Cover and insert Micro USB Cable into External Connector Port



2

Insert Micro USB Cable into PC USB port



☑ Notification Lamp illuminates while charging.

- Notification Lamp goes out when battery is full. Remove Micro USB Cable and close Port Cover.

! Charging Precautions

Handling Cords

Do not pull, bend, or twist cord.

Important USB Charge Usage Note

Handset may power on automatically when connected to a PC via Micro USB Cable; avoid connection aboard aircraft or in hospitals, etc. where handset use is prohibited.

Handset Power On/Off

Power On

1

With Slider open, Long Press  until SoftBank logo appears



☑ After Power On Graphics, waterproofing/dustproofing guidance appears.

2


OK

☑ Initial setup menu opens.

- If handset is set to skip setup menu at Power on, Standby appears.

Power Off

1

 (Long)



· Alternatively, Long Press  with Slider open.

2


Power off



3

OK



 Handset shuts down.

Slider Positions

Set Slider in the following two positions as needed.

Slider Closed

Keep Slider closed when not in use; use Touch Panel and Side Keys.



Slider Open

Slide Display to place or answer calls, enter text, etc.

· Use handset keys or Touch Panel.

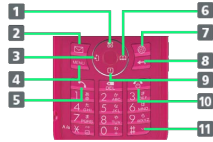


Using Handset Keys

Use twelve hard keys for text entry, etc. Press function keys for onscreen dialpad, Mail Folder list, Browser, etc. Use Multi Selector to select items, move cursor, etc.

Major Key Assignments (Standby)

The following functions are assigned by default.

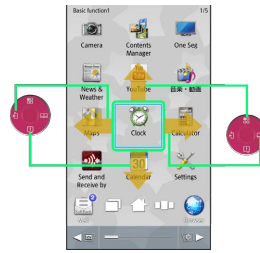


- 1** Open Home Screen
- 2** Open Mail Folder list
- 3** Open incoming call history. Long Press for outgoing call history.
- 4** Open Options menu
- 5** Show onscreen dialpad
- 6** Open Address Book. Long Press for Send and Receive by Infrared.
- 7** Access the Internet
- 8** Open list of active applications
- 9** Open Notifications panel. Long Press for Information.
- 10** Long Press for Phone options
- 11** Long Press to activate/cancel Manner mode

Selection & Execution

Use Multi Selector to highlight item; press Center Key to execute it.

- Item selection with Multi Selector is disabled in Standby.



In this guide, Multi Selector and Center Key operations are indicated as follows:

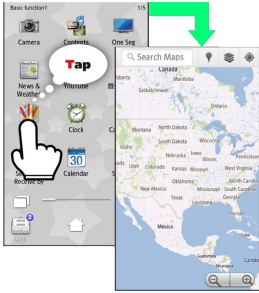
Label	Operation
	Press center
	Press up
	Press down
	Press left
	Press right
	Press up/down
	Press left/right
	Press up/down/left/right

Using Touch Panel

Touch Display to navigate menus, open functions, scroll pages, etc.

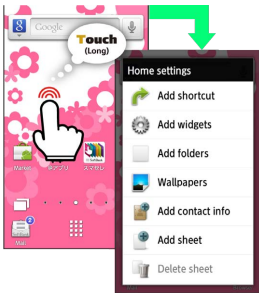
Tap

Tap item or key to open or execute corresponding function/operation.



Long Touch

Touch item for 1+ seconds (handset vibrates) to move icon, open menu, etc.



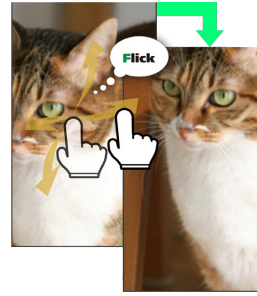
Drag

Drag item to move it.



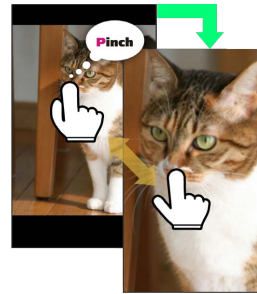
Swipe/Flick

Swipe or flick to toggle sheets, pages, etc.



Spread & Pinch

Spread or pinch to enlarge or reduce images, etc.



+ Calibrating Touch Panel

Calibrate Touch Panel to improve response. Hold handset normally during calibration.

In Home Screen, **MENU** → **Settings** → **About phone**
 → **Adjust touch panel** → Tap center of each circle

Basic Operations

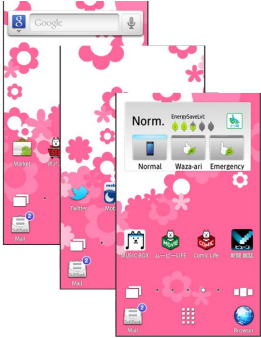
Handset Interface.....	20
Applications.....	21
My Phone Number.....	23
Mobile Manners.....	24
Text Entry (Handset Keys).....	24
Text Entry (Touch Panel).....	26
Using Google Accounts.....	28
Android Market™.....	29
Security Codes.....	31
USIM PIN.....	32
Sleep Mode.....	33
Software Update.....	33

Handset Interface

Home Screen

Most operations start here. Home Screen holds up to ten sheets; add shortcuts, widgets or folders to each sheet. Icon layout at Display bottom varies with Slider position.

- See "[Home Screen Basics](#)" for details.



Standby

Standby appears upon Slider open in Home Screen. Press function keys to open Mail Folder list, Browser, Address Book, etc.

- See "[Standby Basics](#)" for details.



Launcher

Applications are saved on each page by category; move icons, add pages, etc. as needed.

- See "[Launcher Basics](#)" for details.




Touch Panel & Handset Keys

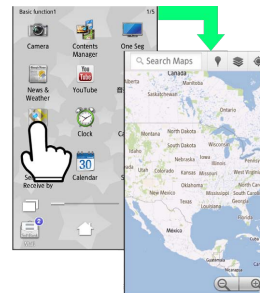
Use intuitive Touch Panel interface or handset keys as needed.



Selection & Execution

Tap (select/execute) item, icon, key, etc. to open or execute corresponding function/operation. Alternatively, with Slider open in Home Screen, use Multi Selector for selection/execution.

- Press  to return to previous window.

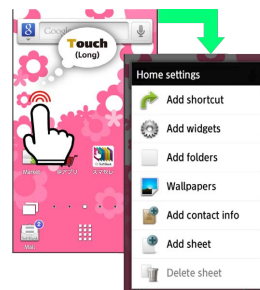


Options Menu Operations

Press  to open Options menu.



- In some windows, Long Touch item, etc. to open Options menu. In Home Screen, Long Touch open area for Home settings (below).



Handset Customization

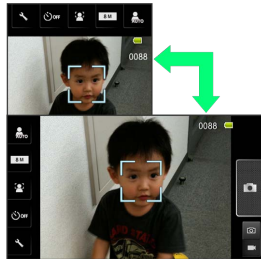
In Home Screen, press **MENU** then tap **Settings** to change settings.

- Checkbox (or) appears beside some options. Tap to select () or cancel () option.



Portrait and Landscape Orientation

For some functions/windows, Display orientation changes with handset orientation.



Applications

Activating Applications

1

In Home Screen,



- Launcher appears.

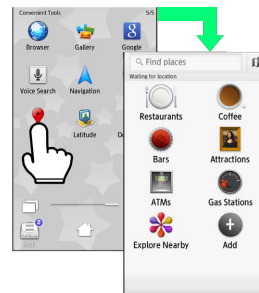
2

Swipe left/right to toggle pages



3

Tap icon




- Application activates.

- For applications within folders, tap folder icon, then tap application icon; press **←** to close folder.
- If confirmation (authentication prompt, selection, caution, etc.) appears, follow onscreen instructions.

Using Application List


Open list of active applications; toggle or close applications.

1

In Home Screen, 




 Active applications appear.



- Alternatively, Long Press  .
- Swipe left/right to toggle lists.

2

Tap application



 Application activates.

- Tap  to close application.
- To hide active applications, press  in application list.

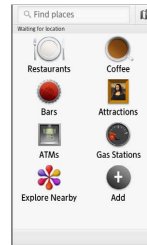
Closing Applications


In any application, press  repeatedly until Home Screen or Launcher returns. (Some applications may remain active.)

To select and close applications, follow these steps:

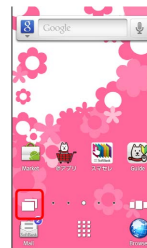
1

In any application, 



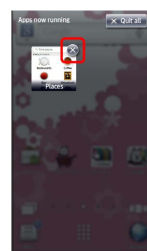
 Home Screen appears.


2



 Active applications appear.

3



 Application ends.

+ Closing All Applications



My Phone Number

Confirming Handset Number

1

In Home Screen, MENU → Settings → Profile



Profile opens.

- Handset number appears in Own phone number field.
- Alternatively, press → in Standby.

Saving User Information

1

In Home Screen, MENU → Settings → Profile

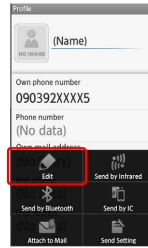


Profile opens.

- Handset number appears in Own phone number field.
- Alternatively, press → in Standby.

2

MENU → Edit



Profile entry window opens.

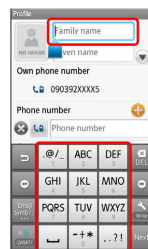
3

Tap item (entry field)

- Tap to show/add entry field or to delete.

4

Complete field



- Tap other items and complete fields as needed.

5

MENU → Save → Yes

Profile is saved.



Mobile Manners

Activating Manner Mode


Mute most handset function sounds.

- Shutter click, video recording tones, etc. still sound even in Manner mode.

1

In Home Screen, Launcher, etc.,  ( ; Long)




 Manner mode activates.

- Alternatively, Long Press  with Slider open.
- To cancel, Long Press  () or .


Activating Offline Mode

Temporarily suspend all wireless connections.

1


 (Long)


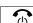


- Alternatively, Long Press  with Slider open.

2


Offline mode

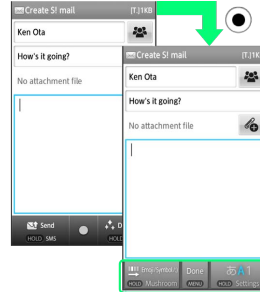
 Offline mode activates.



- To cancel, Long Press  or , then tap **Offline mode**.

Text Entry (Handset Keys)

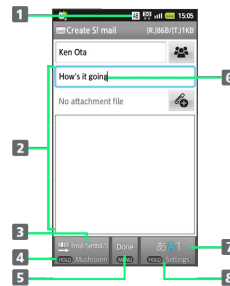
Basics







When cursor appears in text entry field with Slider open, use keypad to type characters or press ; operation guide appears at Display bottom for text entry.



- If cursor does not appear or to enter characters in other fields, use  to select a field.
- To complete text entry and exit, press  when **Done** appears.


Window Description







- 1 Entry mode indicator
- 2 Text entry field
- 3  Open list for pictograms, etc.
- 4  (Long) Open typing assistance
- 5  Complete entry
- 6  Cursor
- 7  Toggle entry modes
- 8  (Long) Open text entry options

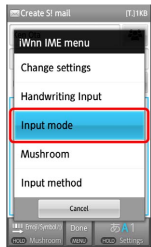
- Operation guide at Display bottom changes upon typing a character; enter current character, use conversion, etc.

Switching Entry Modes



Press  to toggle Half Alphabet, Half Numeric, and Kanji modes. Follow these steps to use other entry modes:

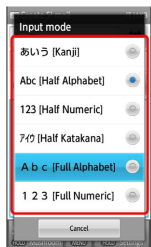
1


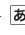
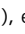

In a text entry window,  (Long)  Input mode  



2

Select mode  





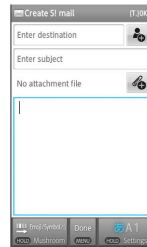
 Entry mode is switched. Current entry mode indicator--  (Kanji),  (Full Katakana),  (Half Alphabet), etc.--appears on Status Bar.

Alphabet

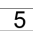

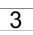

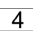

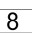

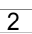


Follow these steps to enter Keitai:

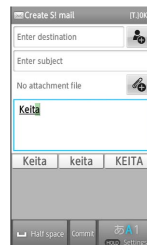
1

In a text entry window,  ( appears)



2


 (twice: K)   (twice: e)   (three times: i)   (once: t)   (once: a)   (three times: i)

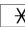


• The first character is capitalized automatically by default. (Cancel auto capitalization as needed.)

3



 Keitai is entered.

• To toggle case, type a letter and press .


Text Entry (Touch Panel)

Onscreen Keyboards

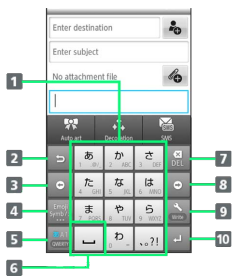
Use two types of onscreen keyboards to enter characters with Slider closed:

12-Key: Multiple characters assigned to each key.

QWERTY: Single letters assigned to each key.

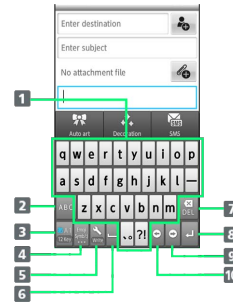
- Tap a text entry field for keyboards.
- In any keyboard, Long Touch  to switch between 12-Key keyboard and QWERTY keyboard.

12-Key Keyboard Layout




- 1 Enter characters
- 2 Reverse toggle character options
- 3 Backspace cursor
- 4 Enter pictograms, symbols, or emoticons; toggle conversion options
- 5 Toggle entry modes
- 6 Enter space; toggle case; add ` or °
- 7 Delete characters
- 8 Advance cursor; add space at text end
- 9 Open text entry options; convert hiragana
- 10 Insert line break; enter current characters

QWERTY Keyboard Layout





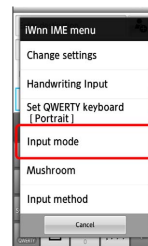
- 1 Enter characters
- 2 Enter letters
- 3 Toggle entry modes
- 4 Enter pictograms, symbols, or emoticons
- 5 Open text entry options
- 6 Enter space; convert hiragana
- 7 Delete characters
- 8 Insert line break; enter current characters
- 9 Advance cursor; add space at text end
- 10 Backspace cursor

Switching Entry Modes

Tap  to toggle Half Alphabet, Half Numeric, and Kanji modes. Follow these steps to use other entry modes:

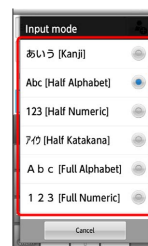
1



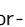
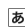
In a text entry window,   Input mode



2

Tap mode





 Keyboard interface changes accordingly. Current entry mode indicator--  (Kanji),  (Full Katakana),  (Half Alphabet), etc.--appears on Status Bar.

Alphabet







In 12-Key keyboard, follow these steps to enter Keitai:

1

In a text entry window,  ( appears)



2


 (twice: K) →  (twice: e) →  (three times: i) →
 (once: t) →  (once: a) →  (three times: i)




- The first character is capitalized automatically by default. (Cancel auto capitalization as needed.)

3

OK

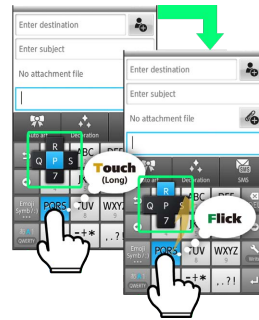
 Keitai is entered.


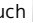
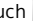
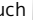
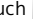
- To toggle case, type a letter and tap .




Flick Input

In 12-Key entry, flick key for target character.

- Long Touch a key for guidance; flick toward target character to enter.



Target Character	Operation
P	Tap  once
Q	Touch  and flick left
R	Touch  and flick up
S	Touch  and flick right
7	Touch  and flick down

- To disable/enable key preview (Flick Input guidance) or Flick Input itself, in [Language & keyboard](#), tap  edition →  or .

Using Google Accounts

Sign in to a Google Account to use Google services. (Some applications may be limited or disabled without a Google Account.)

Creating a New Google Account

1

In Home Screen, MENU → Settings → Accounts & sync



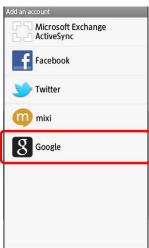
2

Add account



3

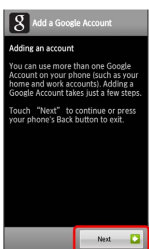
Google



🚩 Add a Google Account appears.

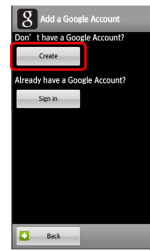
4

Next



5

Create



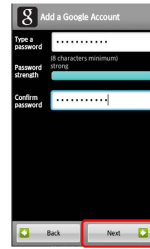
6

Tap First name field → Enter first name → Next → Enter last name → Next → Enter user name → Done → Next



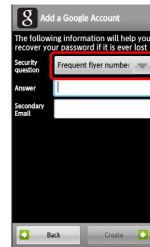
7

Tap password field → Enter password → Next → Re-enter password → Done → Next



8

Tap Security question field



9

Tap question → Tap Answer field → Enter answer → Next → Enter secondary mail address → Done → Create

🚩 Account information is saved.

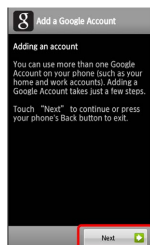
• Follow onscreen instructions.

Signing in to a Google Account

For applications requiring a Google Account, Add a Google Account appears; sign in to use the application.

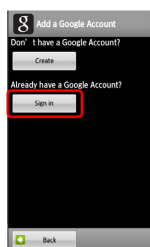
1

In Add a Google Account, **Next**



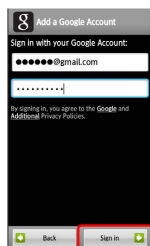
2

Sign in



3

Tap Username field → Enter user name → **Next** → Enter password → **Done** → **Sign in**



4

Finish setup

Sign-in is complete.

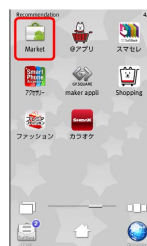
Android Market™

Download various applications via Android Market. (Sign in to a [Google Account](#) beforehand.)

Installing Free Applications

1

In Home Screen, **Market** → In Launcher (Recommendation), **Market**



Market opens.

· If confirmation appears, follow onscreen instructions.

2

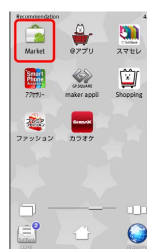
Tap free application → **FREE** (below Install) → **OK**

Download (installation) starts.

Purchasing Paid Applications

1

In Home Screen, **Market** → In Launcher (Recommendation), **Market**



Market opens.

· If confirmation appears, follow onscreen instructions.




2

Tap paid application → Tap price (below Buy) → **OK** →

Download (installation) starts.

Updating Applications

1





In Home Screen,   In Launcher (Recommendation),  (Market)




 Market opens.

- If confirmation appears, follow onscreen instructions.

2

MENU  My apps  Tap application  Update  OK

 Download (installation) starts.

- If confirmation appears, follow onscreen instructions.

Purchased Applications

Payment

No additional payment required for re-downloads of uninstalled purchased applications.





Use on Other Android Devices

Install purchased applications on other Android devices free of charge by using the same Google Account used for the purchase.




Additional Operations

Refund Requests

Request refunds within designated period. Returned applications are deleted from handset; no payment is required. (One refund request per application.)

In Market, MENU  My apps  Tap application 
Refund  Tap answer  OK

Enabling Automatic Updates

In Market, MENU  My apps  Tap application 
Allow automatic updating ()

- Automatic update is not available for some applications.

Important

Application Installation Disclaimer

Various applications are downloadable via Android Market provided by Google Inc. SoftBank Mobile has no warranty or liability for any content (including quality, reliability, legitimacy, fitness for a particular purpose, credibility and accuracy of information) of applications to be installed by users, or for any damages (caused by viruses, etc.) resulting from the installation.

Application Purchase Disclaimer

SoftBank Mobile cannot be held liable for any damages to self or others that arise from purchase of applications.

Android Market Automatic Updates

Automatic Market application updates may change Market operations.

Security Codes

Handset Code & Center Access Code

Center Access Code (Network Password; 4-digit code in contract) is required to use Optional Services via landlines or subscribe to fee-based information.

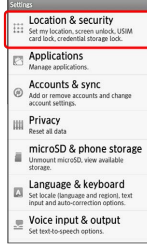
- Write down Handset Code and Center Access Code (Network Password). If you forget these codes, contact us for recovery. For details, contact SoftBank Customer Support, [General Information](#).
- Do not reveal Handset Code or Center Access Code (Network Password). SoftBank Mobile is not liable for misuse or damages.
- Incoming/outgoing call restriction settings will be locked if incorrect Center Access Code (Network Password) is entered three times consecutively during the setting. To resolve, the code must be changed. For details, contact SoftBank Customer Support, [General Information](#).
- If you have previously changed Network Password on a SoftBank handset, enter the latest code to set incoming/outgoing call restrictions.

Saving Handset Code

Write down Handset Code.

1

In Home Screen, **MENU** → **Settings** → **Location & security**



2

Set passcode → **OK** → **Enter Handset Code** → **OK**



3

Re-enter Handset Code → **OK** → **OK**



 Handset Code is saved.

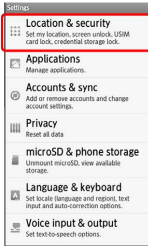
USIM PIN

9999 by default; activate USIM card lock to restrict handset use.

Locking USIM Card

1

In Home Screen, **MENU** → **Settings** → **Location & security**




2

Set up USIM card lock → **Lock USIM card** → **Enter PIN**

→ **OK** (✓)



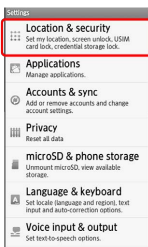
 USIM card lock activates.

Changing PIN

Activate [USIM card lock](#) first.


1

In Home Screen, **MENU** → **Settings** → **Location & security**



2

Set up USIM card lock → **Change USIM PIN** → **Enter current PIN** → **OK** → **Enter new PIN** → **OK** → **Re-enter new PIN** → **OK**

 PIN is changed.

Important


Entering incorrect PIN three consecutive times activates PIN Lock. To cancel, Personal Unlocking Key (PUK Code) is required; contact SoftBank Customer Support, [General Information](#). Entering incorrect PUK Code ten consecutive times activates PUK Lock, disabling handset. For recovery, USIM Card must be reissued at a SoftBank Shop (fees apply).

Sleep Mode

Activating Sleep Mode

Display goes completely dark and Sleep mode activates after a period of inactivity.

Sleep mode prevents accidental Touch Panel operation.

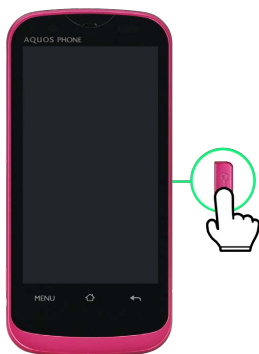
- Press  to activate Sleep mode anytime.


Canceling Sleep Mode

Open Slider. To cancel Sleep mode with Slider closed, follow these steps:

- To cancel with Slider open, press a hard key.

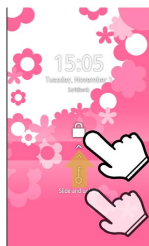
1



 Unlock window appears.

2

Drag  to .



 Sleep mode is canceled.

- When Security Lock is active, unlock it as well.

Missed Calls & New Messages

Call/message icon appears in Unlock window. Drag icon up; corresponding menu/window opens.

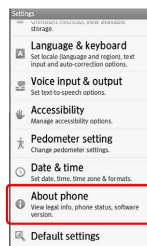
Software Update

Updating Software

At specified time, SoftBank 101SH automatically checks for/downloads firmware updates as required. Follow these steps to update firmware manually:

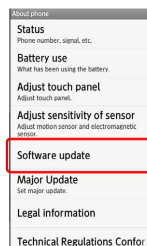
1

In Home Screen, **MENU** → **Settings** → **About phone**




2

Software update



3

Software update → **Execute** → Follow onscreen instructions

 Software update starts.

Before Software Update

Always back up important information. SoftBank Mobile cannot be held liable for damages from lost information, etc.

Precautions

During Update

Handset is disabled until update is complete. Update may take some time.

Signal Conditions

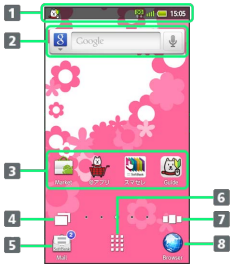
To reduce failure risk, be sure signal is strong and stable, and charge battery adequately beforehand. Update failure may disable handset.

Handset Interface

Home Screen Basics.....	36
Standby Basics.....	37
Launcher Basics.....	38
Status Bar.....	39
Notifications Panel.....	40
Customizing Home Screen.....	41
Customizing Standby.....	43

Home Screen Basics

Window Description (Slider Closed)



- 1 Handset status/notifications appear here
- 2 Use Google Search
- 3 Activate applications
- 4 Open list of active applications
- 5 Open Mail Folder list
- 6 Open Launcher
- 7 Open Home Screen sheet index
- 8 Activate Browser

Window Description (Slider Open)

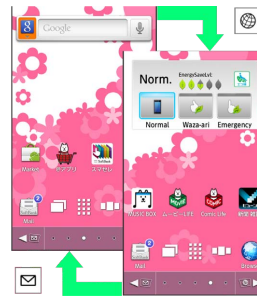


- 1 Handset status/notifications appear here
- 2 Use Google Search
- 3 Activate applications
- 4 Open Launcher
- 5 Open Mail Folder list
- 6 Open list of active applications
- 7 Open Home Screen sheet index
- 8 Activate Browser
- 9 / Toggle sheets

Toggling Home Screen Sheets

Press or , or swipe open area left/right to toggle Home Screen sheets.

- From any sheet, press for top sheet.



Using Home Screen Sheet Index

Use Home Screen sheet index to switch, add or delete sheets.

1

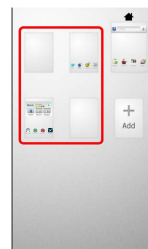
In Home Screen,



Home Screen sheet index appears.

2


Tap sheet





Sheet switches.

+ Home Screen Sheet Index Operations

Adding Sheets


In Home Screen sheet index, 

Deleting Sheets

In Home Screen sheet index, Long Touch sheet  Drag it to  (trash)

· If confirmation appears, follow onscreen instructions.

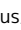



Closing Home Screen Sheet Index

In Home Screen sheet index, 

Standby Basics

Window Description



- 1 Handset status/notifications appear here (Use  to open Notifications panel)
- 2 Tap to use Google Search
- 3 Tap icons to activate applications
- 4  Open Mail Folder list
- 5  Activate Browser
- 6  Open Launcher



· For key operations in Standby, see "[Major Key Assignments \(Standby\)](#)."

Toggling Standby & Home Screen

Standby appears upon Slider open in Home Screen. With Slider open, toggle Standby and Home Screen as shown below:



Returning to Standby from Other Windows


In Launcher, press  twice. In any application, press  repeatedly.

· If confirmation appears, follow onscreen instructions.


Launcher Basics

Opening Launcher

1

In Home Screen or Standby, 



 Launcher appears.

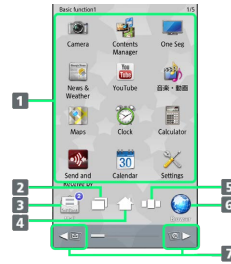
· Alternatively, press  in Standby.



Window Description (Slider Closed)





- 1 Activate applications
- 2 Open list of active applications
- 3 Open Mail Folder list
- 4 Open Home Screen
- 5 Open Launcher page index
- 6 Activate Browser

Window Description (Slider Open)



- 1 Activate applications
- 2 Open list of active applications
- 3 Open Mail Folder list
- 4 Open Home Screen
- 5 Open Launcher page index
- 6 Activate Browser
- 7  /  Toggle pages

Toggling Launcher Pages


Press  or , or swipe open area left/right to toggle Launcher pages.




Using Launcher Page Index

Use Launcher page index to toggle, add or delete pages.

1

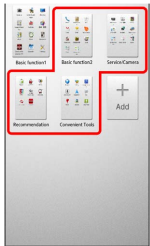
In Launcher, 




 Launcher page index appears.

2

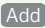
Tap page




 Page opens.


+ Launcher Page Index Operations

Adding Pages

In Launcher page index, 


Deleting Pages

In Launcher page index, Long Touch page  Drag it to

 (trash)

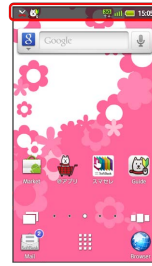
- Delete applications on page beforehand.

Closing Launcher Page Index

In Launcher page index, 

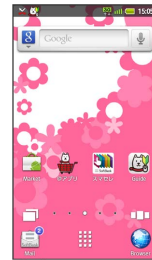
Status Bar







Indicators (new message notification, handset status, etc.) appear at the top of Display.



Notification Indicators

Notification indicators appear on the left.



Indicator	Description
	Missed Calls
	Answer Phone Message Recorded
	New SMS/S! Mail
	New Email
	New Gmail
	Alarm Time Passed

Status Indicators

Status indicators appear on the right.



Indicator	Description
	Battery Strength
	Signal Strength
	No Signal
	Offline mode
	Roaming
	3G Data in Use
	Alarm Set
	Standard manner mode
	Drive manner mode
	Silent manner mode
	Wi-Fi Connected
	Bluetooth® On
	Bluetooth® Connected
	Answer Phone (: Message Recorded)

• Some indicators appear in different colors while signed in to a Google Account.

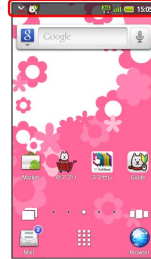
Notifications Panel

Open notifications, confirm handset status or change various settings.

Opening Notifications Panel

1

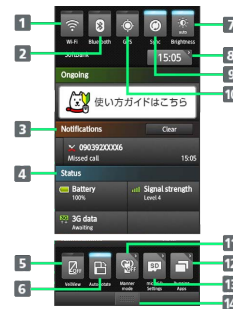
Tap Status Bar



Notifications panel opens.

- Alternatively, press in Standby.
- Press to exit.

Window Description



- 1 Toggle Wi-Fi on/off
- 2 Toggle Bluetooth® on/off
- 3 Notifications; tap **Clear** to delete all Notifications
- 4 Handset status
- 5 Toggle VeilView on/off
- 6 Toggle Display rotation on/off
- 7 Adjust Display brightness
- 8 Clock (tap for Clock application)
- 9 Toggle account synchronization on/off
- 10 Toggle GPS positioning on/off
- 11 Open Manner mode options
- 12 Open list of active applications
- 13 Open microSD menu
- 14 Close Notifications panel

Customizing Home Screen

Set Wallpaper or add shortcuts.

Setting Wallpaper

1

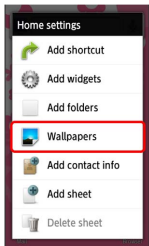
In Home Screen, Long Touch open area



Home settings opens.

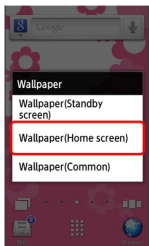
2

Wallpapers



3

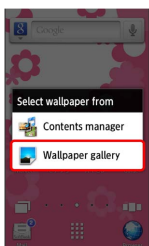
Wallpaper(Home screen)



Select **Wallpaper(Common)** to apply the same Wallpaper to Standby.

4

Wallpaper gallery



Tap **Contents manager** to set captured image as Wallpaper.

5

Tap image



Wallpaper is set.

· If prompted, follow onscreen instructions.

Adding Shortcuts

Follow these steps to add an application shortcut:

1

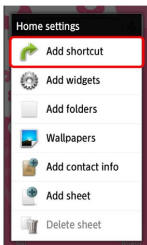
In Home Screen, Long Touch open area



Home settings opens.

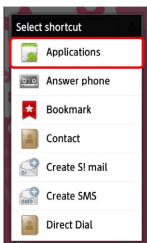
2

Add shortcut



3

Applications



Application list appears.

- Swipe left/right to toggle pages.

4

Tap application



Shortcut is added.


- Added shortcuts also appear in Standby.

+ Managing Shortcuts



Moving Shortcuts

In Home Screen, Long Touch shortcut → Drag it to target location

Removing Shortcuts

In Home Screen, Long Touch shortcut → Drag it to  (trash)

Customizing Standby

Set Wallpaper or change functions assigned to Multi Selector,  and .

Setting Wallpaper

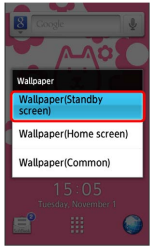
1

In Standby, **MENU** → **Wallpapers** → 



2

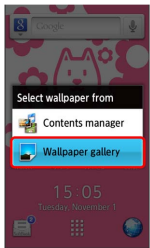
Wallpaper(Standby screen) → 



- Select **Wallpaper(Common)** to apply the same Wallpaper to Home Screen.



3

Wallpaper gallery → 




- Select **Contents manager** to set captured image as Wallpaper.

4

 **Select image** → 



 Wallpaper is set.

- If prompted, follow onscreen instructions.

Changing Key Shortcuts

Follow these steps to assign application shortcuts:

1

In Standby, MENU → Key settings →



2

Select corresponding icon or + →



3

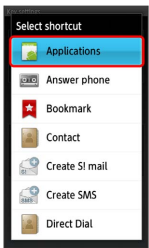
Select shortcut →



- Select **Cancel** and press ● to remove assigned function.
- Select **Preset** to assign default Multi Selector functions.

4

Applications →



Application list appears.

5

Select application → ●

Function is assigned.

Phone

Placing/Answering Calls.....	46
Optional Services.....	47
Using Address Book.....	52

Placing/Answering Calls

See below to dial directly or answer calls. (SoftBank 101SH does not support Video Call.)

Described for handset key operations with Slider open.

Placing a Call

1

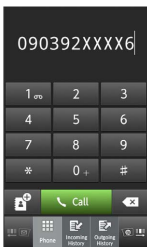
In Standby or Home Screen, enter number



Onscreen dialpad appears.

- Include area code for landline numbers.


2



Handset dials the number.

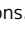
- Wait for other party to accept the call.

3

To end the call, 

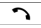


Call ends.

- After calls to/from unsaved numbers, Save to Address Book confirmation appears. Select **Register to address book** and press  then follow onscreen instructions.
- Activate auto end call upon Slider close as needed in **Close slide to end call** (Call settings).

Answering a Call

1


When a call arrives, 



Call connects.

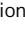
- Activate auto call answer upon Slider open as needed in **Open slide to call** (Call settings).

2

To end the call, 





Call ends.

- After calls to/from unsaved numbers, Save to Address Book confirmation appears. Select **Register to address book** and press  then follow onscreen instructions.
- Activate auto end call upon Slider close as needed in **Close slide to end call** (Call settings).

Emergency Location Report

Your location is automatically reported to the corresponding agency (police, etc.) when you place emergency calls (110, 119 or 118) with SoftBank 3G handsets.

- Registration/transmission fees do not apply.
- Positioning accuracy is affected by location/signal conditions. Always provide your location and purpose on the phone.
- Location Information is not reported when emergency calls are placed without Caller ID (such as when the number is prefixed with 184). However, the corresponding agency may obtain your Location Information in a life threatening situation.
- Location Information is not reported during Global Roaming.
- Emergency calls are restricted when Offline mode and USIM card lock are active. Long Press  or  and cancel Offline mode, then restart handset.

Optional Services

Use these SoftBank Optional Services:

Optional Services

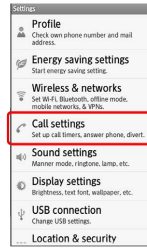
Service	Description
Call Forwarding	Divert all/all unanswered calls to a preset number
Voicemail	Divert all/unanswered calls to Voicemail Center; access messages via handset/touchtone phones
Call Waiting ¹	Answer calls or open another line during a call
Group Calling ¹	Switch between open lines/connect multiple lines
Caller ID	Show or hide your number when placing calls
Call Barring	Restrict incoming/outgoing calls by conditions

¹ A separate contract is required.

Initiating Call Forwarding

1

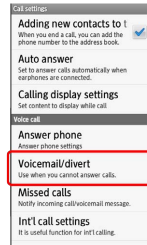
In Home Screen, **MENU** → **Settings** → **Call settings**



Call settings opens.

2

Voicemail/divert



Voicemail/divert menu opens.

3

Settings/stop



Divert menu opens.

4

Always or **No answer** → Enter number



- For **No answer**, tap **Wait time** and select ring time.
- To cancel Call Forwarding, tap **Stop call forward** → **Yes**.

5

OK

Call Forwarding activates.

Initiating Voicemail

1

In Home Screen, **MENU** → **Settings** → **Call settings**



Call settings opens.

2

Voicemail/divert

Voicemail/divert menu opens.

3

Settings/stop

Divert menu opens.

4

Always or **No answer** → **Voicemail**



- For **No answer**, tap **Wait time** and select ring time.
- To cancel Voicemail, tap **Stop call forward** → **Yes**.

5

OK

Voicemail activates.

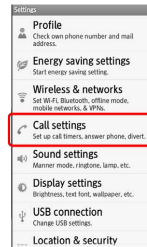
- When a new message is recorded, **[00]** appears on Status Bar. To play messages, tap **Play voicemail** in Voicemail/divert menu, then follow voice guidance.

Activating Call Waiting

A separate contract is required.

1

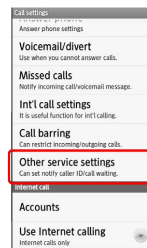
In Home Screen, **MENU** → **Settings** → **Call settings**



Call settings opens.

2

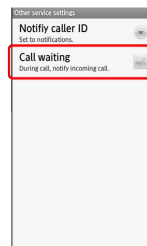
Other service settings




Other service settings opens.

3

Call waiting ()



Call waiting activates.

- During a call, a tone sounds for incoming calls; drag  to answer.
- To cancel Call Waiting, tap **Call waiting**.

Using Group Calling

A separate contract is required.

1

During a call, MENU → Add Call



2

Enter number → Call

3

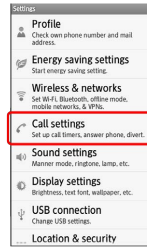
When call connects, MENU → More → Merge calls

☑ All lines connect to each other.

Using Caller ID

1

In Home Screen, MENU → Settings → Call settings



☑ Call settings opens.

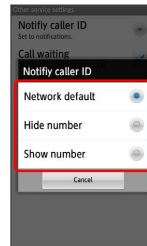
2

Other service settings

☑ Other service settings opens.

3

Notify caller ID → Network default , Hide number or Show number



☑ Caller ID activates.

Using Call Barring

Restrict outgoing/incoming calls and SMS messages.

Restriction	Description
All outgoing calls	Restrict all non-emergency calls
Bar int'l call	Restrict all international calls
Local & home only	Restrict all international calls except calls to Japan
Restrict all incomings	Reject all calls
Bar if abroad	Reject calls while outside Japan

- Center Access Code (Network Password) is required to set incoming/outgoing call restrictions.
- Incoming/outgoing call restriction settings will be locked if incorrect Center Access Code (Network Password) is entered three times consecutively during the setting. To resolve, the code must be changed. For details, contact SoftBank Customer Support, [General Information](#).
- If you have previously changed Network Password on a SoftBank handset, enter the latest code to set incoming/outgoing call restrictions.
- A call barred message appears if call is attempted with outgoing call restriction active. It may take longer to appear in some areas.

1

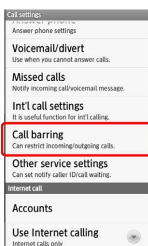
In Home Screen, **MENU** → **Settings** → **Call settings**



Call settings opens.

2

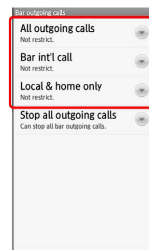
Call barring



Call barring menu opens.

3

Bar outgoing calls or **Bar incoming calls** → Tap option



4

Enter Center Access Code (Network Password) → **OK**

Restriction is set.

+ Additional Operations

Setting Missed Call Notification

Activate this function for records of calls missed when handset is off/out-of-range. Activate Voicemail then follow these steps:

In Call settings, **Missed calls** → **Settings** → **Call** → Follow voice guidance

Setting Handset Response to Missed Calls

In Call settings, **Missed calls** → **Sounds & alerts** → Set

· Set Missed calls sound, Vibration pattern, Incoming calls lamp and Ring duration.

Canceling All Outgoing Call Restrictions

In Call barring menu, **Bar outgoing calls** → **Stop all outgoing calls** → Enter Center Access Code → **OK**

Canceling All Incoming Call Restrictions

In Call barring menu, **Bar incoming calls** → **Stop All incoming calls** → Enter Center Access Code → **OK**

Limiting Calls to Numbers Saved in Address Book

In Call barring menu, **Restrict destinations** → Enter Handset Code → **OK** → **Restrict address book** ()

Limiting Calls to Numbers in Call Permitted List

In Call barring menu, **Restrict destinations** → Enter Handset Code → **OK** → **Specified phone number** → **Switch on/off** () → **Call permitted list** → **<Empty>** → Enter number → **OK**

Rejecting Calls from Unsaved Numbers

In Call barring menu, **Reject call** → **Not registered numbers** ()

Rejecting Calls from Specified Numbers

In Call barring menu, **Reject call** → **Specified numbers** → **Switch on/off** () → **Reject numbers list** → **<Empty>** → Enter number → **OK**

Rejecting Calls with No/Undisplayable Caller ID or from Payphones

In Call barring menu, **Reject call** → **Number not sent** , **Payphone** or **Unavailable** ()


Using Address Book

Save contacts including names, phone numbers, mail addresses, etc.


Described for handset key operations with Slider open.


Adding Contacts

1

In Standby, 

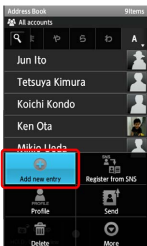



 Address Book opens.


- Alternatively, tap  (Address Book) in Launcher (Basic function2).
- If confirmation appears, follow onscreen instructions.

2

MENU  Add new entry  





 Add contact window opens.

- If account selection window opens, select an account and press .

3

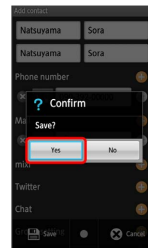
Select item    Complete entry




- Use  to select entry field and press  to enter other items.

4


  Yes  




 Contact is saved.

Dialing via Address Book

1





In Standby, 



 Address Book opens.

- If confirmation appears, follow onscreen instructions.


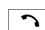
2

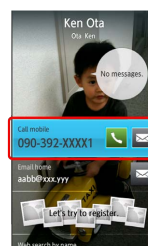
 Select tab (hiragana row, alphabet or ETC) for first character in "Read last"  Select contact  




 Contact opens.

3

Select phone number  



 Handset dials the number.

Important Address Book Usage Note

If handset is left with no battery or an exhausted one, contacts may be altered/lost; handset damage may also affect information recovery. SoftBank Mobile is not liable for any resulting damages. Keep separate copies of contacts, etc.

Messaging & Browser

Mail Types.....	56
Sending S! Mail/SMS.....	56
Receiving & Replying S! Mail/SMS.....	58
Handling S! Mail/SMS.....	60
Creating/Sending Gmail.....	60
Opening Received Gmail.....	61
Email Settings.....	62
Creating/Sending Email.....	63
Opening Received Email.....	63
Browsing the Internet.....	64

Mail Types

S! Mail

Exchange messages with S! Mail-compatible SoftBank handsets and e-mail compatible devices (other mobiles, PCs, etc.) beyond SMS character entry limit; attach media files, etc.

SMS

Exchange short messages with mobiles.

Gmail

Google webmail service; synchronize Gmail between handset and Google server automatically.

Email

Exchange Email (POP3/IMAP4) messages on handset.

- Set up an account to use Email.
- Upon Email message retrieval, accounts are synchronized between handset and source mail server; messages are also accessible from PCs.


Sending S! Mail/SMS

Described for handset key operations with Slider open.


Sending S! Mail

Follow these steps to send S! Mail to a number/address saved in Address Book:

1

In Standby, 




 Folder list appears.

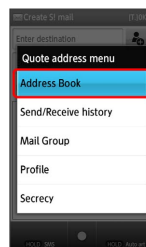
- Alternatively, tap  (Mail) in Home Screen.


2




 S! Mail Composition window opens.


3



 Address Book opens.

4

- Select tab (hiragana row, alphabet or ETC) for first character in "Read last" → Select contact → 

 Contact opens.

5

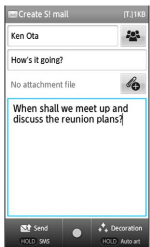
Select mail address (or number) → ●



6

Enter subject → ● → Select message text field → Enter message → ●

7



❏ S! Mail is sent.

- Handset saves failed S! Mail messages to Unsent Folder; automatically attempts redelivery up to two times.

Sending SMS

Follow these steps to send SMS via sent/received mail records:

1

In Standby, ✉



❏ Folder list appears.

- Alternatively, tap ✉ (Mail) in Home Screen.

2

✉ → ✉ (Long)



❏ SMS Composition window opens.

3

❏ → ● → Send/Receive history → ●

4

● Send history or Receive history → Select number → ●

5

Enter message → ● → ✉

❏ SMS is sent.

- Handset saves failed SMS messages to Unsent Folder; automatically attempts redelivery up to two times.

+ Saving without Sending

S! Mail

In S! Mail Composition window, MENU Save Save to unsent box Save as New

SMS

In SMS Composition window,

! Important S! Mail/SMS Transmission Note


If Outbox is full, handset automatically deletes sent messages, unprotected ones first.

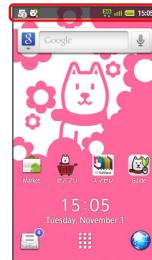
Receiving & Replying S! Mail/SMS


Handset receives S! Mail/SMS messages automatically; set message retrieval to manual or retrieve Server Mail as needed. Described for handset key operations with Slider open.

Opening New Messages

1

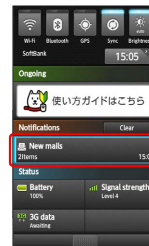
When message arrives, ringtone sounds and  appears on Status Bar




· Unread message count () appears above application icon.

2

In Standby, Select message notification

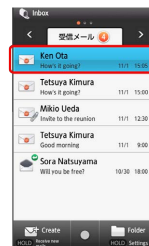



 Message list (Inbox) appears.

· Message window opens if there is only one new message.

3

Select message



 Message window opens.

· If a pictogram is included in subject or message text, corresponding animation appears in message window background.


Replying to Messages

To reply from message window, skip ahead to **3**.

1

In Standby, 




 Folder list appears.

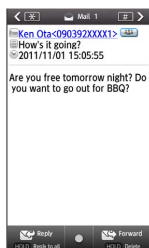
· Alternatively, tap  (Mail) in Home Screen.


2

Select folder in Inbox    Select message  

 Message window opens.

3



· Long Press  to reply to sender and all recipients.

4

Enter message    

 Message is sent.

Retrieving Complete Messages

In message window,   Continue to receive  

· Select  and press  to select item to retrieve.

Important Message Retrieval Notes

Retrieval System

By default, complete message including attachments is retrieved; transmission fees may apply depending on subscribed price plan.

Automatic Message Deletion

If Inbox is full, handset automatically deletes oldest received messages, opened/unprotected ones first. If all messages are unopened, handset automatically deletes oldest unprotected ones first.

Retrieval Outside Japan


Message retrieval outside Japan may incur high charges.

Handling S! Mail/SMS


Opening Messages

Follow these steps to open received messages:

1

In Home Screen,  (Mail)




 Folder list appears.

2

Tap folder in Inbox




 Message list appears.


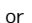
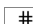
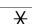
- Flick left/right to switch message lists.
- Alternatively, use  with Slider open to switch message lists.

3

Tap message



 Message window opens.

- Tap  or  to open other messages.
- Alternatively, press  or  with Slider open for other messages.




Creating/Sending Gmail

Use Google webmail service. Sign in to a Google Account beforehand.

Described for handset key operations with Slider open.

Creating/Sending Messages

1

In Standby,   In Launcher (Basic function2),  (Gmail)

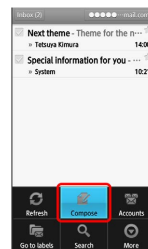


 Inbox opens.

- If confirmation appears, follow onscreen instructions.





2

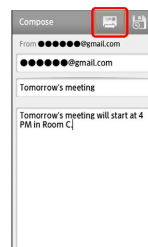
MENU  Compose  



 Mail Composition window opens.

3

Complete message    



 Message is sent.

+ Gmail Composition Operations

Adding Cc/Bcc Recipients

In Mail Composition window, **MENU** → **Add Cc/Bcc** →

- Add recipient

Attaching Files

In Mail Composition window, **MENU** → **Attach** →

- Select file

• If confirmation appears, follow onscreen instructions.

Saving without Sending

After entering recipient, subject or message text, **MENU** →

-

• Message is saved to Drafts.

! Important Gmail Usage Note

Gmail messages are not received if recipient handset is set to reject messages sent from PCs.

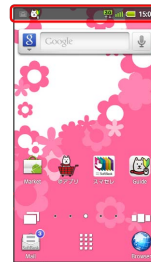
Opening Received Gmail

Gmail groups all related messages by subject. (Conversation view)

Opening New Messages

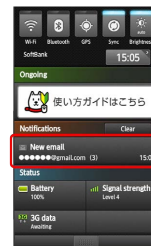
1

When message arrives, ringtone sounds and **M** appears on Status Bar



2

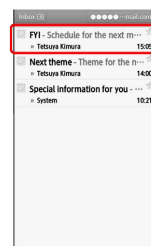
Tap Status Bar → Tap message notification



Inbox opens.

3




Tap message



Message window opens.

Opening Messages

1

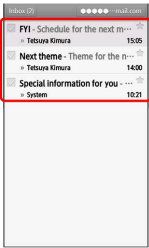
In Home Screen,   In Launcher (Basic function2),  (Gmail)




 Inbox opens.

2

Tap conversation (subject)



 Message window opens.

+ Replying to Messages




In message window,   Complete message  

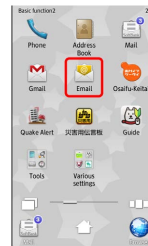
Email Settings


Mail Account Setup

Confirm user name (user ID), password, server name, etc. beforehand.



1

In Home Screen,   In Launcher (Basic function2),  (Email)




 Account setup menu opens (initial startup).



2


Enter mail address and password  



• If address requires manual configuration of incoming/outgoing server settings, complete setup manually. (For manual setup, tap  and proceed.)

3

Enter account name/sender name  

 Account setup is complete.

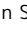
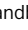

• Sender name appears on outgoing messages.

Creating/Sending Email


Described for handset key operations with Slider open.

Creating/Sending Messages

1

In Standby,   In Launcher (Basic function2),  (Email)

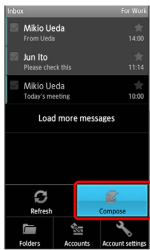


 Inbox opens.

· For multiple accounts, Email window opens.

2

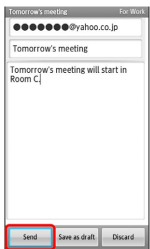
MENU  Compose  




 Mail Composition window opens.

3

Complete message  Send  




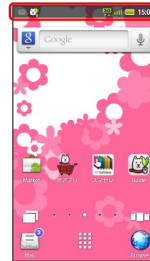
 Message is sent.

Opening Received Email

Opening New Messages

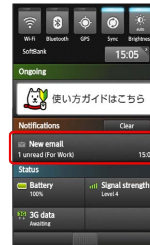
1


When message arrives, ringtone sounds and  appears on Status Bar



2

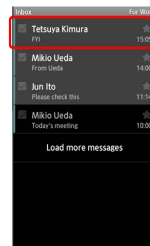
Tap Status Bar  Tap message notification




 Inbox opens.

3



Tap message



 Message window opens.

Opening Messages

1


In Home Screen,  In Launcher (Basic function2),  (Email)



 Inbox opens.

2

Tap message


 Message window opens.

Browsing the Internet


View Internet sites via Browser.


Using Browser

1

In Home Screen,  (Browser)




 Handset connects to the Internet.


- Alternatively, press  in Standby.
- Flick up/down or use  to scroll.
- Internet connection confirmation appears upon tapping URL within message text; tap **Yes** to open linked page in Browser.

Saving Bookmarks

1

In Home Screen,  (Browser)




 Handset connects to the Internet.



2

Open target page  MENU  Bookmarks




 Bookmark · History opens.

3


Add  Check/edit name/URL  OK




 Current page is saved as a bookmark.

Opening Bookmarks

1


In Home Screen,  (Browser)



 Handset connects to the Internet.


2

MENU  Bookmarks  Tap bookmark


 Corresponding page opens.

Using History

1

In Home Screen,  (Browser)



 Handset connects to the Internet.

2


MENU  More  History  History  Tap item 

Tap record


 Corresponding page opens.

Opening Frequently Visited Pages

1


In Home Screen,  (Browser)



 Handset connects to the Internet.

2


MENU → **More** → **History** → **Most visited** → Tap record

 Corresponding page opens.

Opening Additional Windows

Open another page in a new window and switch between windows.

1

In Home Screen,  (Browser)




 Handset connects to the Internet.

2

MENU → **New window**



 Current page opens in another window.

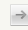
· Press **MENU** and tap **Windows** to switch or close windows.

SSL & TLS


Secure Sockets Layer (SSL) and Transport Layer Security (TLS) are encryption protocols that secure Internet transmissions of important/sensitive information such as credit card numbers and corporate secrets, providing protection against online threats (eavesdropping, falsification, impersonation, etc.).

Browser Operations

Entering URLs Directly

In a page, tap URL entry field → Enter URL → 

Searching for Words/Phrases

In a page, tap URL entry field → Enter word/phrase →  → Tap link

Editing Bookmarks

In a page, **MENU** → **Bookmarks** → Long Touch bookmark → **Edit bookmark** → **Edit name/URL** → **OK**

Deleting Bookmarks

In a page, **MENU** → **Bookmarks** → Long Touch bookmark → **Delete bookmark** → **OK**

SSL/TLS Caution

When a security notice appears upon opening an Internet page, subscribers must decide for themselves whether or not to open the page. Opening secure pages constitutes agreement to the terms of SSL/TLS usage. SoftBank, SHARP Corporation, VeriSign Japan and Cybertrust cannot be held liable for any damages associated with the use of SSL/TLS.

Camera



Photo Camera.....	68
Video Camera.....	69

Photo Camera


Capturing Photos

Capture JPEG images.

1

In Home Screen,  In Launcher (Basic function1),  (Camera)

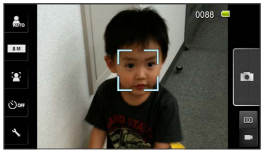


 Photo Viewfinder appears.

- If confirmation appears, follow onscreen instructions.

2


Frame subject on Display



- For people, focus automatically locks on detected face.

3



 Shutter clicks; photo is saved.

+ Photo Viewfinder Operations

Adjusting Brightness

In Photo Viewfinder, drag vertically for Brightness Scale

Adjusting Zoom

In Photo Viewfinder, drag horizontally for Zoom Slider

Locking Focus

In Photo Viewfinder, tap focus lock target


- Camera continuously focuses on moving subjects.
- To release shutter, tap the subject again.
- Camera uses color to track subjects; may not correctly track faintly colored subjects or ones similar to background color.

Opening Captured Photo


After photo capture, tap preview thumbnail

- Press **MENU** to send captured photo via mail or set it as Wallpaper, etc.



Changing Image Size

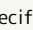
In Photo Viewfinder, **8 M**, etc. (Picture Size)  Tap size

Changing Scene Setting

In Photo Viewfinder, **STD**, etc. (Scene)  Tap scene

Using Self-timer

In Photo Viewfinder, , etc. (Self-timer)  Tap time


- Tap ; shutter is released after specified time elapses.

Disabling Automatic Addition of Location Information for Photos

When handset GPS function is active, Location Information is added to captured photos automatically. (Location Information is retained even after uploading photos to the Internet.) To prevent this, follow these steps:

In Photo Viewfinder,  (Settings)  **Save Settings**
 **Location info**  **Automatic added**  **OFF**

Opening Help

In Photo Viewfinder, **MENU**  **Help**

! Important Camera Usage Note



Mind your manners when using Camera.

Video Camera


Recording Video

Record MPEG-4 video.



1

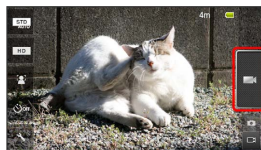
In Home Screen,  → In Launcher (Service/Camera),  (Video Camera)




 Video Viewfinder appears.

2

Frame subject on Display  




 Tone sounds and recording starts.

- For people, focus automatically locks on detected face.

3

to stop

 Recording stops; video is saved.

+ Video Viewfinder Operations

Adjusting Brightness

In Video Viewfinder, drag vertically for Brightness Scale

Adjusting Zoom

In Video Viewfinder, drag horizontally for Zoom Slider

Locking Focus

In Video Viewfinder, tap focus lock target


- Camera continuously focuses on moving subjects.
- Camera uses color to track subjects; may not correctly track faintly colored subjects or ones similar to background color.

Playing Recorded Video


After recording, tap preview thumbnail  Tap video

- Press **MENU** to send recorded video via mail, open video properties, etc.



Changing Recording Size


In Video Viewfinder, **HD**, etc. (Picture Size)  Tap size

Changing Scene Setting

In Video Viewfinder, **STD**, etc. (Scene)  Tap scene

Using Self-timer


In Video Viewfinder, , etc. (Self-timer)  Tap time

- Tap ; recording starts after specified time elapses.

Enabling/Disabling Microphone

In Video Viewfinder,  (Settings)  **Mic Setting** 
ON or **OFF**

Opening Help

In Video Viewfinder, **MENU**  **Help**

! Important Camera Usage Note

Mind your manners when using Camera.



Music & Images

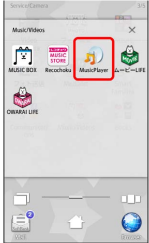
Music.....	72
Still Images & Video.....	72


Music

Playing Music

1

In Home Screen,  In Launcher (Service/Camera),
 Music/Videos  (MusicPlayer)

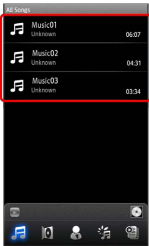


 Library opens.

· MusicPlayer opens in the last-used state.

2

Tap file



 File plays.



Still Images & Video

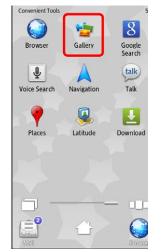
Opening/Playing Files


Supported File Formats:

Image	File Format
Still Images	JPEG, PNG, GIF, BMP, WBMP, MPO
Video	3GPP, 3GPP2, MP4, WMV, ASF, PIFF, WebM

1

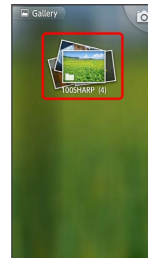
In Home Screen,  In Launcher (Convenient Tools), 
 (Gallery)



 Albums appear.


2

Tap album



3

Tap file

 File opens/plays.

 Slideshow

In still image, **Slideshow**

· Tap image to stop.

Connectivity

Connecting to Wi-Fi.....	74
Using Bluetooth®.....	76

Connecting to Wi-Fi

Use household Wi-Fi networks, etc. to connect to the Internet.

Connecting Selected Access Points

1

In Home Screen, **MENU** → **Settings** → **Wireless & networks**



2

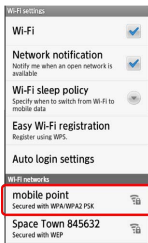
Wi-Fi settings

Wi-Fi settings opens.

· If disabled (), tap **Wi-Fi** to enable it ().

3

Tap access point



4

Tap Password field → Enter password



5

Connect

Connection is established.

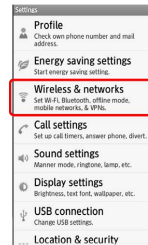
· May omit password entry for some access points.

Registering Private Access Points

SoftBank 101SH supports WPS standard that automatically configures settings for easy Wi-Fi network access upon establishing a connection on handset.

1

In Home Screen, **MENU** → **Settings** → **Wireless & networks**



2

Wi-Fi settings

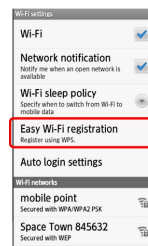


Wi-Fi settings opens.

· If disabled (), tap **Wi-Fi** to enable it ().

3

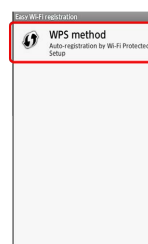
Easy Wi-Fi registration



Easy Wi-Fi registration opens.

4

WPS method



· Enter PIN that appears on Display into the access point.

5

Start

Access point registration starts.

- Follow onscreen instructions.
- Connection is established automatically thereafter.

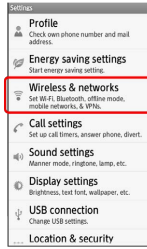
Using Public Wireless LAN Services

Follow these steps to connect to BB mobilepoint:

- To use public wireless LAN services, subscription with the corresponding ISP, etc. is required.

1

In Home Screen, MENU → Settings → Wireless & networks



2

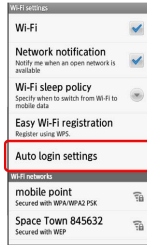
Wi-Fi settings

Wi-Fi settings opens.

- If disabled (), tap **Wi-Fi** to enable it ().

3

Auto login settings



Public wireless LAN account settings opens.

4

BB MOBILE POINT



BB MOBILE POINT opens.

5

ON or OFF

6

Tap Login ID field → Enter login ID

7

Tap Password field → Enter password → Done



8

OK

Handset is ready for connection to public wireless LAN services.

- If confirmation appears, follow onscreen instructions.
- When Auto-login is set to **ON**, handset connects to BB mobilepoint automatically in the service range.
- Connection to some public wireless LAN services may not be possible. Additional charges may apply depending on service area.

+ Wi-Fi Operations

Connecting Access Points Manually

In Wi-Fi settings, **Add Wi-Fi network** → Tap Network SSID field → Enter Network SSID → Done → Tap security protocol → Tap Password field → Enter password → Done → Save

- Omit password entry if security protocol is Open.

Dismissing Access Points

In Wi-Fi settings, tap connected access point → Forget

Disconnecting Access Points

In Wi-Fi settings, Long Touch access point → Forget network → Yes

? Troubleshooting

- Q. Cannot detect access points
- A. There may be multiple access points nearby. Handset may not detect access points correctly if there are multiple access points sharing the same channel setting in close vicinity.

Using Bluetooth®

Wirelessly transfer files/data between handset and compatible devices (handsfree devices, etc.).

Activating Bluetooth®

1

In Home Screen, **MENU** → **Settings** → **Wireless & networks**



2

Bluetooth



Bluetooth® activates.

- Tap **Bluetooth** to toggle on (✓)/off (✗).

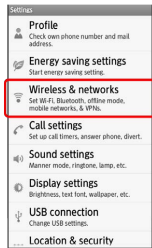
Device Search & Pairing

Search for nearby Bluetooth® devices and pair them with handset; transfer files to/from paired devices.

- Activate Bluetooth® and make devices to be paired discoverable first.

1


In Home Screen, **MENU** → **Settings** → **Wireless & networks**



2

Bluetooth settings




 Bluetooth settings opens; found devices are listed.

- If target device is not found, tap **Scan for devices** to retry.

3

Tap device → Follow onscreen instructions to complete pairing

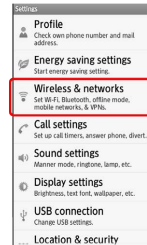
 Pairing completes; handset connects to handsfree devices, etc. automatically.

- Pairing procedure varies by device.

Connecting Paired Handsfree Devices, Etc.

1


In Home Screen, **MENU** → **Settings** → **Wireless & networks**



2


Bluetooth settings



 Bluetooth settings opens.

3

Tap device

 The device is connected.

Accepting Connection Requests

Handset automatically accepts connection requests from paired devices. For unpaired devices, enable Discoverable () first; when connection request arrives, follow onscreen prompt.

- If confirmation appears, follow onscreen instructions.

+ Bluetooth® Connection Operations

Unpairing Devices

In Bluetooth settings, Long Touch device → Unpair (or Disconnect & unpair)

Disconnecting Handsfree Devices, Etc.


In Bluetooth settings, tap device → OK

Allowing Other Devices to Detect Handset

In Bluetooth settings, Discoverable ()

- Discoverable turns off automatically after a certain period of time.
- To change Discoverable timeout time, in [Wireless & networks](#), tap Bluetooth settings → Discoverable timeout .



Receiving Files (e.g., Address Book via All File Transfer)

When file reception request arrives,  appears on Status Bar. Follow these steps to receive files:

In Home Screen, etc., tap Status Bar → Tap notification → Accept → After receiving files, tap Status Bar → Tap notification → Tap file (.vcf) → Register of data → Enter Handset Code → OK → Tap option



- If confirmation appears, follow onscreen instructions.
- Received files are saved to SD Card; open them from Contents Manager.

Sending Single Files (e.g., Address Book)

In Home Screen,  → In Launcher (Basic function2),  (Address Book) → Long Touch contact → Send by Bluetooth → Yes → Tap device



- If confirmation appears, follow onscreen instructions.

Sending Selected Files (e.g., Address Book)

In Home Screen,  → In Launcher (Basic function2),  (Address Book) → MENU → Send → Send by Bluetooth → Select and send → Tap contacts () → Send → Yes → Tap device

- If confirmation appears, follow onscreen instructions.

Sending All Files (e.g., Address Book)

In Home Screen,  → In Launcher (Basic function2),  (Address Book) → MENU → Send → Send by Bluetooth → Send all items → Yes → Enter Handset Code → OK → Tap account → Tap device

- If confirmation appears, follow onscreen instructions.

? Troubleshooting

- Q. Cannot use Bluetooth®
- A. Offline mode may be active. Cancel it to use Bluetooth® functions.

! Important Bluetooth® Usage Notes

Connection

Bluetooth® connection may not be possible with some Bluetooth® devices. Noise may interfere with wireless or handsfree conversations.

File Transfer

Files may not appear correctly on recipient devices.

Global Services

Global Roaming.....	80
Calling from Outside Japan.....	80

Global Roaming

SoftBank 101SH is Global Roaming Service eligible where 3G network coverage is available (3G areas). Use the same handset number outside Japan. For details, contact SoftBank Customer Support, [General Information](#).

Selecting a Network Operator

Handset connects to an appropriate network operator automatically by default. Follow these steps to select a network operator manually:

1

In Home Screen, **MENU** → **Settings** → **Wireless & networks**



2

Mobile networks → **Network operators**



3

Tap operator

Network operator is set.

- Tap **Select automatically** to set an appropriate network operator automatically.
- Tap **Search networks** to search for all available network operators.

Calling from Outside Japan

See SoftBank Mobile Website for details:

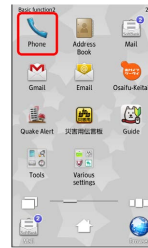
http://mb.softbank.jp/en/global_services/

Access roaming area/rate information or print it out to carry with you while traveling abroad.

Calling Japan

1

In Home Screen, → In Launcher (Basic function2), (Phone)



Onscreen dialpad appears.

- If missed call count () appears above , Call History opens. Press to return to Launcher and start over.

2

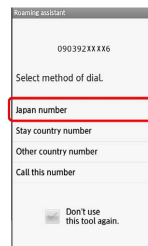
Use onscreen dialpad to enter number → **Call**

Roaming assistant appears.

- Do not add + before the number.

3



Japan number




Handset dials the number.




Calling Landlines & Mobiles within the Same Country

1


In Home Screen,  In Launcher (Basic function2),  (Phone)




 Onscreen dialpad appears.

· If missed call count () appears above  , Call History opens. Press  to return to Launcher and start over.

2

Use onscreen dialpad to enter number  **Call**


 Roaming assistant appears.

· Do not add + before the number.

3



Stay country number




 Handset dials the number.




Calling Countries aside from Japan

1


In Home Screen,  In Launcher (Basic function2),  (Phone)




 Onscreen dialpad appears.

· If missed call count () appears above  , Call History opens. Press  to return to Launcher and start over.

2

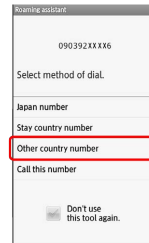
Use onscreen dialpad to enter number  **Call**


 Roaming assistant appears.

· Do not add + before the number.

3

Other country number





 Country code list appears.

4

Tap country



 Handset dials the number.

 Calling SoftBank Handsets

Always select **日本(JPN)** .

+ International Call Operations

Changing Country Codes

In Home Screen, **MENU** → **Settings** → **Call settings**
→ **Int'l call settings** → **User List** → Tap country/
area → **Change by list** → Tap country/area →
Register

· Tap **Entry direct** to enter country name and code directly.

Deleting Country Codes

In Home Screen, **MENU** → **Settings** → **Call settings**
→ **Int'l call settings** → **User List** → Tap country/
area → **Delete from list**

Enabling/Disabling Abroad Assistant

In Home Screen, **MENU** → **Settings** → **Call settings**
→ **Int'l call settings** → **Abroad assistant**

· Tap **Abroad assistant** to toggle Enable () and
Disable ().

Settings

Wireless & Network Settings.....	84
Call Settings.....	86
Sound Settings.....	86
Application Settings.....	88
Accounts & Sync Settings.....	89
Privacy Setting.....	89
Language & Keyboard Settings.....	90
Date & Time Settings.....	91
About Phone.....	91

Wireless & Network Settings

Wireless & Network Settings

+ Offline Mode

Disabling/Enabling All Wireless Connections

In Home Screen, **MENU** → **Settings** → **Wireless & networks** → **Offline mode**

- Tap **Offline mode** to toggle on ()/off ().

+ Wi-Fi

Enabling/Disabling Wi-Fi

In Home Screen, **MENU** → **Settings** → **Wireless & networks** → **Wi-Fi**

- Tap **Wi-Fi** to toggle on ()/off ().
- Disable **Wi-Fi** to extend Battery Time.

+ Wi-Fi Settings

Enabling/Disabling Available Network Notifications

In Home Screen, **MENU** → **Settings** → **Wireless & networks** → **Wi-Fi settings** → **Network notification**

- Available when Wi-Fi is on ().
- Tap **Network notification** to toggle on ()/off ().

Selecting a Wi-Fi Sleep Option

In Home Screen, **MENU** → **Settings** → **Wireless & networks** → **Wi-Fi settings** → **Wi-Fi sleep policy** → Tap option

Enabling/Disabling Auto-login in Public WLAN Service Areas

In Home Screen, **MENU** → **Settings** → **Wireless & networks** → **Wi-Fi settings** → **Auto login settings** → Tap service → Auto-login **ON** or **OFF** → Tap Login ID field → Enter ID → **Next** → Enter password → **Done** → **OK**

- Available when Wi-Fi is on ().
- Setup procedure varies by ISP/contract terms.
- If confirmation appears, follow onscreen instructions.

+ Home Network Settings

Enabling/Disabling DLNA Device Media File Sharing

In Home Screen, **MENU** → **Settings** → **Wireless & networks** → **Home network settings** → **Home network server**

- Set up **Wi-Fi for home NW server** beforehand.
- Tap **Home network server** to toggle on ()/off ().
- See TV user guide to learn how to connect handset to DLNA-compatible TV.

Setting up a Network (Wi-Fi Access Point) for DLNA Service

In Home Screen, **MENU** → **Settings** → **Wireless & networks** → **Home network settings** → **Wi-Fi for home NW server** → Tap access point

- Available when Home network server is off ().
- If confirmation appears, follow onscreen instructions.

Saving a Name that Appears on DLNA Devices

In Home Screen, **MENU** → **Settings** → **Wireless & networks** → **Home network settings** → **Home network server name** → Tap entry field → Enter name → **Done** → **OK**

+ Bluetooth

Activating/Canceling Bluetooth®

In Home Screen, **MENU** → **Settings** → **Wireless & networks** → **Bluetooth**

- Tap **Bluetooth** to toggle on ()/off ().
- Disable **Bluetooth** to extend Battery Time.

+ Bluetooth Settings

Connecting to Bluetooth® Devices by Service

In Home Screen, **MENU** → **Settings** → **Wireless & networks** → **Bluetooth settings** → Long Touch device → **Options...** → Tap item → **Connect**

- Available for compatible devices only.

Changing Handset Name that Appears on Other Devices

In Home Screen, **MENU** → **Settings** → **Wireless & networks** → **Bluetooth settings** → **Device name** → Enter name → **OK**

- Pictograms and line breaks are not supported.

Changing Discoverable Timeout Time

In Home Screen, **MENU** → **Settings** → **Wireless & networks** → **Bluetooth settings** → **Discoverable timeout** → Tap item

- Enable **Discoverable** () first.
- When **Discoverable timeout** is set to **Never**, handset is discoverable until **Discoverable** is disabled.

Selecting whether to Use Handsfree Device or Operated Device as Means of Conversation

In Home Screen, **MENU** → **Settings** → **Wireless & networks** → **Bluetooth settings** → **Detailed Bluetooth Settings** → **Handsfree setting** → Tap option

+ VPN Settings

Adding Virtual Private Networks (VPNs)

In Home Screen, **MENU** → **Settings** → **Wireless & networks** → **VPN settings** → **Add VPN** → Tap item
→ Complete setting

- Tap a VPN to connect/disconnect it. Long Touch one to edit/delete it.

+ Mobile Networks

Enabling/Disabling Mobile Data Transmissions

In Home Screen, **MENU** → **Settings** → **Wireless & networks** → **Mobile networks** → **Data transmission**

- Tap **Data transmission** to toggle on ()/off ().

Enabling/Disabling Data Roaming

In Home Screen, **MENU** → **Settings** → **Wireless & networks** → **Mobile networks** → **Data roaming**

- Tap **Data roaming** to toggle on ()/off ().
- If confirmation appears, follow onscreen instructions.

Adding Access Points

In Home Screen, **MENU** → **Settings** → **Wireless & networks** → **Mobile networks** → **Access Point Names**
→ **MENU** → **New APN** → Tap item → Complete setting → **Done** → **OK** → **MENU** → **Save**

Restoring Default Settings

In Home Screen, **MENU** → **Settings** → **Wireless & networks** → **Mobile networks** → **Access Point Names**
→ **MENU** → **Reset to default**

Selecting a Network Operator

In Home Screen, **MENU** → **Settings** → **Wireless & networks** → **Mobile networks** → **Network operators**
→ **Select automatically** (or tap operator directly)

- Tap **Select automatically** to set an appropriate network operator automatically.
- Tap **Search networks** to search for network operators again.

Call Settings

Call Settings

+ Open Slide to Call

Activating Auto Call Answer upon Slider Open

In Home Screen, **MENU** → **Settings** → **Call settings**

→ **Open slide to call**

· Tap **Open slide to call** to toggle on ()/off ().

+ Close Slide to End Call

Activating Auto End Call upon Slider Close

In Home Screen, **MENU** → **Settings** → **Call settings**

→ **Close slide to end call**

· Tap **Close slide to end call** to toggle on ()/off ().

Sound Settings

Sound Settings

+ Manner Mode

Activating Manner Mode

In Home Screen, **MENU** → **Settings** → **Sound settings**

→ **Manner mode** → Tap option

+ Phone Vibe

Enabling/Disabling Vibration

In Home Screen, **MENU** → **Settings** → **Sound settings**

→ **Phone vibe**

· Tap **Phone vibe** to toggle on ()/off ().

+ Volume

Setting Handset Volume

In Home Screen, **MENU** → **Settings** → **Sound settings**

→ **Volume** → Drag slider to adjust volume → **OK**

· To apply ringtone volume level to notification sound, tap **Use incoming call volume for notifications** .

+ Earphone Type

Setting Headphone Type

In Home Screen, **MENU** → **Settings** → **Sound settings**

→ **Earphone type** → Tap option → **OK**

+ Melody

Setting Incoming Ringtone

In Home Screen, **MENU** → **Settings** → **Sound settings**

→ **Melody** → Tap tone/file → **OK**

+ Vibrator Pattern

Changing Vibration Pattern

In Home Screen, **MENU** → **Settings** → **Sound settings**

→ **Vibrator Pattern** → Tap pattern → **OK**

+ Incoming Lamp

Setting Incoming Illumination

In Home Screen, **MENU** → **Settings** → **Sound settings**
 → **Incoming lamp** → **Blinking pattern** or **Blinking color** → **Tap item** → **OK**

+ Notification Sound

Changing Notification Sound

In Home Screen, **MENU** → **Settings** → **Sound settings**
 → **Notification sound** → **Tap tone/file** → **OK**

+ Ring Duration

Changing Duration for Notification Sound

In Home Screen, **MENU** → **Settings** → **Sound settings**
 → **Ring duration** → **Ring time setting** → **Enter time**
 → **OK**

- For **Ring single song**, selected tone/file plays until it ends.

+ Pulse Notification Light

Enabling/Disabling Notification Lamp for Notifications

In Home Screen, **MENU** → **Settings** → **Sound settings**
 → **Pulse notification light**

- Tap **Pulse notification light** to toggle on ()/off ().
- Disable **Pulse notification light** to extend Battery Time.

+ Audible Touch Tones

Enabling/Disabling Onscreen Dialpad Tones

In Home Screen, **MENU** → **Settings** → **Sound settings**
 → **Audible touch tones**

- Tap **Audible touch tones** to toggle on ()/off ().
- Disable **Audible touch tones** to extend Battery Time.

+ Audible Selection

Enabling/Disabling Tap Sounds

In Home Screen, **MENU** → **Settings** → **Sound settings**
 → **Audible selection**

- Tap **Audible selection** to toggle on ()/off ().
- Disable **Audible selection** to extend Battery Time.

+ Screen Lock Sounds

Enabling/Disabling Lock/Unlock Sounds for Sleep Mode

In Home Screen, **MENU** → **Settings** → **Sound settings**
 → **Screen lock sounds**

- Tap **Screen lock sounds** to toggle on ()/off ().
- Disable **Screen lock sounds** to extend Battery Time.

+ Haptic Feedback

Enabling/Disabling Key Tap Vibration

In Home Screen, **MENU** → **Settings** → **Sound settings**
 → **Haptic feedback**

- Tap **Haptic feedback** to toggle on ()/off ().
- Disable **Haptic feedback** to extend Battery Time.

Application Settings

Application Settings

+ Unknown Sources

Enabling/Disabling Installation of Non-Android Market Applications

In Home Screen, **MENU** → **Settings** → **Applications** → **Unknown sources**

- Tap **Unknown sources** to toggle on ()/off ().
- If confirmation appears, follow onscreen instructions.

+ Preferred Install Location

Setting Install Location

In Home Screen, **MENU** → **Settings** → **Applications** → **Preferred install location** → Tap option

+ File Transfer Mail Software

Setting Default Mailer for Sending Files

In Home Screen, **MENU** → **Settings** → **Applications** → **File transfer mail software** → **Set the mail software** → Tap item

- Disable **Set the mail software** () to select a mailer upon attaching a file.

+ Home Applications

Changing Home Application

In Home Screen, **MENU** → **Settings** → **Applications** → **Home applications** → Tap item

- Download Home applications via Android Market, etc. beforehand.

+ Manage Applications

Opening Application Properties

In Home Screen, **MENU** → **Settings** → **Applications** → **Manage applications** → Tap application

- Confirm version/memory usage, uninstall/force-stop application, etc.

+ Running Services

Opening List of Active Services

In Home Screen, **MENU** → **Settings** → **Applications** → **Running services**

- To stop active service, tap one then tap **Stop**.
- If confirmation appears, follow onscreen instructions.

+ Storage Use

Confirming Application Storage Status

In Home Screen, **MENU** → **Settings** → **Applications** → **Storage use**

+ Battery Use

Confirming Battery Status

In Home Screen, **MENU** → **Settings** → **Applications** → **Battery use** → Tap item

- For some items, related function/setting name (e.g., **Display settings** for Display) appears in details window; tap it for settings.

+ Development

Enabling/Disabling Debug Mode upon USB Connection

In Home Screen, **MENU** → **Settings** → **Applications** → **Development** → **USB debugging**

- Tap **USB debugging** to toggle on ()/off ().
- If confirmation appears, follow onscreen instructions.

Enabling/Disabling Sleep Mode while Charging

In Home Screen, **MENU** → **Settings** → **Applications** → **Development** → **Stay awake**

- Tap **Stay awake** to toggle on ()/off ().

Enabling/Disabling Mock Locations

In Home Screen, **MENU** → **Settings** → **Applications** → **Development** → **Allow mock locations**

- Tap **Allow mock locations** to toggle on ()/off ().

Accounts & Sync Settings

Accounts & Sync Settings

+ Background Data

Enabling/Disabling Automatic Application Data Transmission in Background

In Home Screen, MENU → Settings → Accounts & sync → Background data

- Tap **Background data** to toggle on ()/off ().
- If confirmation appears, follow onscreen instructions.
- When enabled, inactive applications are also ready for automatic data transmission.
- Disable **Background data** to extend Battery Time.

+ Auto-sync

Setting Automatic Application Sync

In Home Screen, MENU → Settings → Accounts & sync → Auto-sync

- Tap **Auto-sync** to toggle on ()/off ().
- Enable **Background data** () first.

+ Add Account

Adding Accounts

In Home Screen, MENU → Settings → Accounts & sync → Add account → Tap item → Follow onscreen instructions

Privacy Setting

Privacy Setting

+ Reset All

Deleting All Handset Files

In Home Screen, MENU → Settings → Privacy → Reset all → Enter Handset Code → OK → Read message → Reset phone → Erase everything

- Handset reboots after Reset all.
- To delete all SD Card files simultaneously, tap **Erase microSD** before tapping **Reset phone**.
- Reset all deletes all handset files including some preinstalled applications irreversibly. SD Card files are also deleted if **Erase microSD** is selected ().

Language & Keyboard Settings

Language & Keyboard Settings

+ Select Language

Selecting Handset Interface Language

In Home Screen, **MENU** → **Settings** → **Language & keyboard** → **Select language** → Tap option

+ User Dictionary

Saving Words to User Dictionary

In Home Screen, **MENU** → **Settings** → **Language & keyboard** → **User dictionary** → **MENU** → **Add**

Enter word → **OK**

· Tap a saved word to edit/delete it.

+ iWnn IME - SH edition

Enabling/Disabling Key Tap Sound

In Home Screen, **MENU** → **Settings** → **Language & keyboard** → **iWnn IME - SH edition** → **Sound on key press**

· Tap **Sound on key press** to toggle on ()/off ().

Enabling/Disabling Key Tap Vibration

In Home Screen, **MENU** → **Settings** → **Language & keyboard** → **iWnn IME - SH edition** → **Vibrate on key press**

· Tap **Vibrate on key press** to toggle on ()/off ().

Enabling/Disabling Key Preview (Flick Input Guidance)

In Home Screen, **MENU** → **Settings** → **Language & keyboard** → **iWnn IME - SH edition** → **Key input guide**

· Tap **Key input guide** to toggle on ()/off ().

Selecting a Keyboard Skin

In Home Screen, **MENU** → **Settings** → **Language & keyboard** → **iWnn IME - SH edition** → **Keyboard image** → Tap option

Enabling/Disabling Flick Input

In Home Screen, **MENU** → **Settings** → **Language & keyboard** → **iWnn IME - SH edition** → **Flick input**

- Flick Input is to flick key for target character.
- Tap **Flick input** to toggle on ()/off ().

Adjusting Flick Input Sensitivity

In Home Screen, **MENU** → **Settings** → **Language & keyboard** → **iWnn IME - SH edition** → **Flick sensitivity** → Drag slider to adjust sensitivity → **OK**

Enabling/Disabling Toggle Input while Flick Input is Enabled

In Home Screen, **MENU** → **Settings** → **Language & keyboard** → **iWnn IME - SH edition** → **Toggle input**

- Toggle Input is to toggle characters by tapping keys.
- Tap **Toggle input** to toggle on ()/off ().

Selecting Automatic Cursor Movement Option

In Home Screen, **MENU** → **Settings** → **Language & keyboard** → **iWnn IME - SH edition** → **Auto cursor move** → Tap option

Date & Time Settings

Date & Time Settings

+ Automatic

Setting Date Automatically

In Home Screen, **MENU** → **Settings** → **Date & time** → **Automatic**

· Tap **Automatic** to toggle on ()/off ().

+ Set Date

Setting Date Manually

In Home Screen, **MENU** → **Settings** → **Date & time** → **Set date** → **Select date** → **Set**

· Available when **Automatic** is off ().

+ Select Time Zone

Setting Time Zone Manually

In Home Screen, **MENU** → **Settings** → **Date & time** → **Select time zone** → Tap country/area

· Available when **Automatic** is off ().

+ Set Time

Setting Time Manually

In Home Screen, **MENU** → **Settings** → **Date & time** → **Set time** → **Select time** → **Set**

· Available when **Automatic** is off ().

+ Use 24-hour Format

Enabling/Disabling 24-hour Format

In Home Screen, **MENU** → **Settings** → **Date & time** → **Use 24-hour format**

· Tap **Use 24-hour format** to toggle on ()/off ().

+ Select Date Format

Changing Date Format

In Home Screen, **MENU** → **Settings** → **Date & time** → **Select date format** → Tap option

About Phone

About Phone

+ Status

Confirming Handset Status

In Home Screen, **MENU** → **Settings** → **About phone** → **Status**

+ Battery Use

Confirming Battery Status/Usage Time

In Home Screen, **MENU** → **Settings** → **About phone** → **Battery use** → Tap item

· For some items, related function/setting name (e.g., **Display settings** for Display) appears in details window; tap it for settings.

+ Adjust Touch Panel

Calibrating Touch Panel

In Home Screen, **MENU** → **Settings** → **About phone** → **Adjust touch panel** → Follow onscreen instructions

+ Adjust Sensitivity of Sensor

Calibrating Motion & Electromagnetic Sensors

In Home Screen, **MENU** → **Settings** → **About phone** → **Adjust sensitivity of sensor** → **OK** → Follow onscreen instructions (tone sounds when calibration completes) → **OK**

+ Software Update

Confirming Firmware Updates & Downloading as Required

In Home Screen, **MENU** → **Settings** → **About phone** → **Software update** → **Software update** → **Execute** → Follow onscreen instructions

· See "**Software Update**" beforehand.

Enabling/Disabling Automatic Updates

In Home Screen, **MENU** → **Settings** → **About phone** → **Software update** → **Auto update settings** → **Update automatically** or **Do not update automatically**

Changing Automatic Update Start Time

In Home Screen, **MENU** → **Settings** → **About phone**
 → **Software update** → **Update time settings** →
 Select time → **Set**

+ Major Update

Checking for a New Version of Android Operating System Manually

In Home Screen, **MENU** → **Settings** → **About phone**
 → **Major Update** → **Confirm update** → Follow
 onscreen instructions

Upgrading Android Operating System

In Home Screen, **MENU** → **Settings** → **About phone**
 → **Major Update** → **Start update** → Follow onscreen
 instructions

· Available when a new version of Android operating system is released.

Enabling/Disabling Automatic Update Check

In Home Screen, **MENU** → **Settings** → **About phone**
 → **Major Update** → **Check for updates**

· Tap **Check for updates** to toggle on ()/off ().


+ Legal Information

Reading Copyright, Usage Terms, Etc.

In Home Screen, **MENU** → **Settings** → **About phone**
 → **Legal information** → Tap item

+ Technical Regulations Conformity Certification

Opening Technical Regulations Conformity Certification Information (, Etc.)

Handset complies with requirements as stipulated by the Radio Law and Telecommunications Business Law. Follow these steps to confirm Technical Regulations Conformity Certification information (, etc.):

In Home Screen, **MENU** → **Settings** → **About phone**
 → **Technical Regulations Conformity Certification**

+ Model Number

Confirming Model Number

In Home Screen, **MENU** → **Settings** → **About phone**
 · See below **Model number** .

+ Android Version

Confirming Android Operating System Version

In Home Screen, **MENU** → **Settings** → **About phone**
 · See below **Android version** .

+ Baseband Version

Confirming Baseband Version

In Home Screen, **MENU** → **Settings** → **About phone**
 · See below **Baseband version** .

+ Kernel Version

Confirming Kernel Version

In Home Screen, **MENU** → **Settings** → **About phone**
 · See below **Kernel version** .

+ Build Number

Confirming Build Number

In Home Screen, **MENU** → **Settings** → **About phone**
 · See below **Build number** .

Appendix

Specifications.....	94
Customer Service.....	95

Specifications

Handset

Item	Description
Weight	109 g (129 g with battery) ¹
Continuous Talk Time ²	3G: 370 minutes ¹
Continuous Standby Time ³	3G: 400 hours ¹
Continuous One Seg Reception Time ⁴	6.5 hours ¹
Charging Time ⁵	170 minutes ¹
Size	53 x 112 x 15.6 mm (Slider closed, without protruding parts)
Maximum Output	3G: 0.25 W

1 Approximate value.

2 Continuous Talk Time is an average measured with a new, fully charged battery, in strong signal conditions without moving handset.

3 Continuous Standby Time is an average measured with a new, fully charged battery, without calls or operations, in strong signal conditions without moving handset. The value is calculated with Data transmission and Quake Alert disabled. Standby Time may vary with environment (e.g., battery strength, ambient temperature), settings, etc.

4 Continuous One Seg Reception Time is measured with a new, fully charged battery, with AV mode set to Standard, Sound setting set to OFF and Smooth mode set to ON, using 3.5 mm Micro USB Plug and Headphones with Microphone (sold separately), until battery runs low (10% of capacity).

5 Charging Time is measured with Power off using AC Charger.

· Talk Time, Standby Time and One Seg Reception Time when Brightness (Display settings) is set to approximately half of maximum (11 of 21).

· Talk Time/Standby Time/One Seg Reception Time may vary with location, status, settings, etc.

· Display employs precision technology, however, some pixels may remain on/off.

Battery

Item	Description
Voltage	3.7V
Battery Type	Lithium-ion
Capacity	1,020 mAh
Size (W x H x D)	36.2 x 54.0 x 4.7 mm (without protruding parts) ¹
Materials/Finishing	PC resin/Gold plating

1 Approximate value.

Customer Service

For information about SoftBank handsets or services, contact us at the following numbers.

SoftBank Customer Support

General Information

From a SoftBank handset, dial toll free at 157
From a landline/IP phone, dial toll free at 0800-919-0157

Customer Assistance (Repairs/Lost Handsets)

From a SoftBank handset, dial toll free at 113
From a landline/IP phone, dial toll free at 0800-919-0113
If toll free number is unreachable, use toll number below for your service area:
Hokkaido Area, Tohoku Area, Hokuriku Area, Kanto-Koshinetsu Area: 022-380-4380
Tokai Area: 052-388-2002
Kansai Area: 06-7669-0180
Chugoku-Shikoku Area, Kyushu-Okinawa Area: 092-687-0010

Smartphone Technical Support Center

From a SoftBank handset, dial toll free at 151
From a landline/IP phone, dial toll free at 0800-1700-151

SoftBank Mobile Global Call Center

From outside Japan, dial +81-3-5351-3491 (toll free from SoftBank handsets)
If handset is lost/stolen, call this number immediately (international charges apply)

Safety Precautions




Safety Precautions.....	98
Important Product Information.....	104
Handset & Hardware Care.....	106
General Notes.....	108
FCC Notice.....	109
Specific Absorption Rate (SAR).....	110
Water & Dust Resistance.....	110

Safety Precautions







Read Safety Precautions before using handset.
 Observe precautions to avoid injury to self or others, or damage to property.
 SoftBank Mobile is not liable for any damages resulting from use of this product.

Safety Precautions

These labels show degree of risk from improper use; learn them before reading on:


Label	Description
 DANGER	Great risk of death or serious injury
 WARNING	Risk of death or serious injury
 CAUTION	Risk of minor injury or damage to property

These symbols signify prohibited/compulsory actions; learn them before reading on:

Symbol	Description
	Prohibited actions
	Disassembly prohibited
	Exposure to liquids prohibited
	Use with wet hands prohibited
	Compulsory actions
	Unplug from outlet


Handset, Battery, USIM Card, Micro USB Cable, Micro USB Charging Adapter, AC Charger (Sold Separately) & SD Card

DANGER




Use specified battery, Micro USB Cable, Micro USB Charging Adapter and Charger only.

Non-specified equipment use may cause battery to leak, overheat, burst or ignite, and may cause Charger to overheat, ignite, malfunction, etc.




Do not disassemble, modify or solder handset or related hardware.

May cause fire, injury, electric shock or malfunction. Battery may leak, overheat, burst or ignite. Modifying handsets is prohibited by the Radio Law and subject to a penalty.




Do not expose internal handset parts, battery or Charger to liquids.

Do not let exposed internal parts remain wet; do not charge wet battery. May cause overheating, electric shock, fire, injury or malfunction. Use only as directed.



Do not charge battery in or expose handset or related hardware to extreme heat (fire, heat sources, direct sunlight, inside vehicles, etc.).

May cause warping/malfunction; battery may leak, overheat, ignite or burst. Handset or related hardware may become hot to the touch, leading to burn injuries, etc.



Do not force battery/Charger into handset. Confirm terminal/connector orientation; retry.

Battery may leak, overheat, burst, ignite, etc.

⚠ WARNING

Prohibited

Do not place handset, battery or Charger in/on ovens, microwave ovens, pressure cookers, induction stoves or other cooking appliances.

Battery may leak, overheat, burst or ignite. Handset/Charger may overheat, emit smoke, ignite, malfunction, etc.



Compulsory

Keep handset off and Charger disconnected near gas stations or places with fire/explosion risk.

Handset use near petrochemicals or other flammables may cause fire/explosion; power off before using Osaifu-Keitai® at gas stations (cancel Osaifu-Keitai Lock beforehand).



Prohibited

Do not drop/throw or apply strong impacts.

Battery may leak, overheat, burst or ignite; result in fire, electric shock, malfunction, etc.



Compulsory

For unusual sound/odor, smoke or other abnormality:

Continued use may cause fire, electric shock, etc.; grasp plug to disconnect Charger, power off, then remove battery, being careful not to burn or injure yourself.



Prohibited

Keep liquid (water, pet urine, etc.) or conductive material (pencil lead, metal strip/jewelry, etc.) away from charging terminals or External Connector Port.

May cause short circuit, resulting in fire, malfunction, etc.



Prohibited

Do not charge battery while handset is wet.

May cause electric shock or short circuit, resulting in fire, malfunction, etc.



Prohibited

Do not expose handset or related hardware to hot air from dryers, etc. to dry them or for other purposes. Avoid saunas or hot water.

Battery may leak, overheat, burst or ignite. Handset or Charger may overheat, emit smoke, ignite, malfunction, etc.

⚠ CAUTION

Prohibited

Do not place handset or related hardware on unstable surfaces.

Handset or related hardware may fall, resulting in injury, malfunction, etc.; take added care when Vibration is set or while charging.



Compulsory

Keep handset and related hardware out of infants' reach.

Infants may choke from swallowing handset or related hardware or be injured, etc.



Compulsory

For use of handset/related hardware by child, explain instructions and supervise use.

Misuse may cause injury, etc.

Battery

DANGER

Read battery label to confirm battery type; use/dispose of battery accordingly.

Symbol on Label	Battery Type
Li-ion00	Lithium-ion



Prohibited

Do not dispose of battery in fire.

Battery may leak, burst, ignite, etc.



Prohibited

Do not damage (nail, hammer, stomp, etc.) battery or subject it to strong impacts.

Battery may leak, overheat, burst, ignite, etc.



Prohibited

Keep wire or other metal objects away from battery terminals. Do not carry/store battery with conductive material (pencil lead, metal strip/jewelry, etc.).

Battery may leak, overheat, burst, ignite, etc.



Compulsory

If battery fluid gets in eyes, do not rub; rinse with water and consult a doctor immediately.

Eyes may be severely damaged.

WARNING



Compulsory

If battery fluid contacts skin or clothes, discontinue handset use and rinse with clean water immediately.

May cause skin damage.



Compulsory

If battery does not charge properly, stop trying.

Battery may leak, overheat, burst, ignite, etc.



Compulsory

For abnormal odor, excessive heat, discoloration or distortion, remove battery, being careful not to burn or injure yourself. Avoid fire sources.

Continued use may cause battery to leak, overheat, burst, ignite, etc.



Compulsory

Keep battery away from pets.

Pet bites may cause battery to leak, burst, overheat, ignite, etc.

CAUTION



Prohibited

Do not dispose of an exhausted battery with ordinary refuse.

Tape over battery terminals before disposal. Take battery to a SoftBank Shop, or follow the local disposal regulations.

Handset

WARNING

Prohibited

Do not use handset while driving or cycling.

Accidents may result. Phone use while driving or cycling is prohibited by law and subject to a penalty; park legally beforehand.



Compulsory

Power off near electronic devices that employ high precision control systems or weak signals.

May cause electronic malfunctions, etc. Take added care near these devices: Hearing aids, implanted pacemakers/defibrillators and other electronic medical equipment; fire alarms, automatic doors and other automatic control devices.



Compulsory

Power off before boarding aircraft to avoid possible radio wave interference with aircraft operations.

If mobile phone use is allowed on board, follow airline or cabin crew instructions regarding handset use.



Compulsory

Users with a heart condition should adjust ringtone Vibration and Volume as needed.

May cause heart damage.



Compulsory

If thunder is audible while outdoors, power off; find cover.

There is a risk of lightning strike or electric shock.



Prohibited

Do not look into Infrared Port during infrared transmissions.

Eyesight may be affected.

CAUTION

Prohibited

Do not use handset when it may affect a vehicle's electronic equipment.

Handset use inside vehicles may cause electronic equipment to malfunction, resulting in accidents.



Compulsory

For any skin irritation associated with use, discontinue use and consult a doctor.

Metal and other materials may cause skin irritation, rashes, or itchiness depending on your physical condition.



Prohibited

Keep handset away from magnetic cards, etc.

Data on bank cards, credit cards, telephone cards, floppy disks, etc. may be lost.



Prohibited

Do not swing handset by strap or TV Antenna.

May harm self or others; strap may break, resulting in injury or handset malfunction/breakage.



Compulsory

Handset may become hot while in use, especially at high temperature.

Prolonged contact with skin may cause burn injuries.



Prohibited

Always maintain some distance from Speaker while ringtones, music or other handset sounds play.

Excessive volume may damage ears or hearing.



Compulsory

Keep fingers, straps, etc. outside when opening/closing Slider.

May cause injury, breakage, etc.



Compulsory

Watch One Seg from a distance in good light.

Watching in poor light or too close may affect eyesight.



Compulsory

Moderate handset volume when using Headphones.

Excessive volume may damage ears or hearing.

AC Charger (Sold Separately)

WARNING



Prohibited

Do not cover/wrap Charger while charging.

Charger may overheat, resulting in fire, malfunction, etc.



Prohibited

Use only the specified voltage.

Non-specified voltages may cause fire, malfunction, etc.

- AC Charger: AC 100V-240V Input

- In-Car Charger (use in negative earth vehicles only): DC 12V/24V Input

Do not use power adapters. Transformer use may cause fire, electric shock or malfunction.

Disconnect
Power Source

Unplug Charger for periods of disuse; grasp plug to disconnect it.

May cause electric shock, fire or malfunction.



Compulsory

Use only the specified fuse for In-Car Charger.

Non-specified fuse may cause fire or malfunction. See In-Car Charger manual for details.

Disconnect
Power Source

If liquid (water, pet urine, etc.) gets inside, grasp plug to disconnect it immediately.

May cause electric shock, smoke or fire.



Compulsory

To remove debris, grasp plug to disconnect Charger, then clean with dry cloth.

Fire may result.



Prohibited

Do not use In-Car Charger in positive earth vehicles.

May cause fire, etc. Use in negative earth vehicles only.



Compulsory

Plug Charger firmly into the outlet, keeping plug and charging terminals away from conductive material (pencil lead, metal strip/ jewelry, etc.).

May cause electric shock, short circuit, fire, etc.



Do Not Use Wet Hands

Do not touch plug with wet hands.

May cause electric shock, malfunction, etc.



Prohibited

Do not touch Charger if thunder is audible.

May cause electric shock, etc.



Prohibited

Do not expose Charger to liquids/high humidity (precipitation, bath/shower rooms, restrooms, etc.).

May cause fire, electric shock or malfunction.

⚠ CAUTION



Disconnect Power Source

Grasp plug to disconnect Charger before cleaning.

May cause electric shock, etc.



Compulsory

Always grasp plug (not cord) to disconnect Charger.

Pulling plug by cord may damage cord; cause electric shock, fire, etc.



Prohibited

Do not subject Charger to strong impacts while it is plugged in.

May cause malfunction or injury.

Micro USB Cable & Micro USB Charging Adapter

⚠ CAUTION



Compulsory

For any skin irritation associated with use, discontinue use and consult a doctor.

Metal and other materials may cause skin irritation, rashes, or itchiness depending on your physical condition.

Handset Use & Electronic Medical Equipment

This section is based on "Guidelines on the Use of Radio Communications Equipment such as Cellular Telephones and Safeguards for Electronic Medical Equipment" (Electromagnetic Compatibility Conference, April 1997) and "Report of Investigation of the Effects of Radio Waves on Medical Equipment, etc." (Association of Radio Industries and Businesses, March 2001).

⚠ WARNING

Compulsory

Persons with implanted pacemaker/defibrillator should keep handset more than 22 cm away.

Radio waves may interfere with implanted pacemakers or defibrillators.



Compulsory

If you intend to use electronic medical equipment other than implanted pacemaker/defibrillator outside medical facilities, consult the vendor on radio wave effects.

Radio waves may interfere with electronic medical equipment.



Compulsory

Observe these rules inside medical facilities to avoid effects of radio waves on electronic medical equipment:

- Do not enter an operating room or an Intensive or Coronary Care Unit while carrying a handset.
- Keep handset off in hospitals.
- Even in lobbies or other places where handset use is permitted, keep handset off near electronic medical equipment.
- Obey medical facility rules on mobile phone use.



Compulsory

Power off in crowds or trains where persons with implanted pacemaker/defibrillator may be near.

Radio waves may interfere with implanted pacemakers or defibrillators causing such devices to malfunction.

Important Product Information**General Use**

- If your USIM Card or handset (with USIM Card inserted) is lost or stolen, suspend your service immediately. For details, contact SoftBank Customer Support, [General Information](#).
- SoftBank Mobile is not liable for any damages resulting from accidental loss/alteration of handset/SD Card files or settings. Keep separate copies of contacts, etc.
- Handset transmissions/One Seg reception may be disrupted inside buildings, tunnels or underground, or when moving into/out of such places.
- Use handset without disturbing others.
- Handsets are radios as stipulated by the Radio Law. Under the Radio Law, handsets must be submitted for inspection upon request.
- Handset use near landlines, TVs or radios may cause interference.
- Beware of eavesdropping.
Because this service is completely digital, the possibility of signal interception is greatly reduced. However, some transmissions may be overheard.
Eavesdropping
Deliberate/accidental interception of communications constitutes eavesdropping.
- Beware of harmful/malicious websites. Take added care when posting personal information, etc.
- An export license may be required to carry handset into other countries if it is to be used by or transferred to another person. However, no such license is required when you take handset abroad for personal use on a vacation or business trip and then bring it back. Export control regulations in the United States provide that an export license granted by the US government is required to carry handset into Cuba, Iran, North Korea, Sudan or Syria.

Camera

- Mind your manners when using Camera.
- Test Camera before capturing/recording special moments.
- Do not use Camera in places where photography or videography is prohibited.
- Captured images may not be used/transferred without copyright holder (photographer, etc.) permission, except for personal use.

Function Usage Limits

USIM Card must be inserted to use handset. If the full handset price has been paid, some functions are accessible without USIM Card. For the procedure, contact a SoftBank Shop.

In-Call/Transmission Cautions

- During calls/transmissions, calling/transmission charges/fees apply even if other functions or operations are simultaneously in use.
- Transmissions involving JavaScript or Flash® may incur high charges.

Quake Alert (Application)

- By default, handset receives earthquake alerts (Quake Alert Setting is active).
- Alert tones sound even in Manner mode.
- Alerts are not received during calls/transmissions or in poor signal conditions.
- Depending on usage/situation, handset may receive alerts for other areas or no alerts.
- Standby Time may decrease when Quake Alert Setting is active.
- SoftBank Mobile cannot be held liable for any damages associated with this service, including accidents resulting from received information, reception timing or reception failure.

Wi-Fi (Wireless LAN)

Wireless LAN (hereafter "Wi-Fi") uses radio waves to enable communication between compatible devices, thus allowing connection to a local area network from anywhere within the range. However, there is a risk of data interception unless security is established. It is advisable for the user to configure security settings on their own responsibility before using Wi-Fi.

- Do not use Wi-Fi near electrical appliances, audiovisual equipment or office automation equipment; may affect Wi-Fi transmission speed, availability, clarity, etc. (There is a possibility of interference especially when a microwave oven is in use.)
- The target access point may not be detected correctly if there are multiple access points nearby.

■Precautions

The frequency band utilized by handset Wi-Fi is shared with industrial, scientific or medical equipment, including household microwave ovens, etc., and used by radio stations, amateur radio stations, etc. (hereafter "other radio stations").

- 1 Before using Wi-Fi, visually confirm that no other radio stations sharing the same frequency band are in use nearby.
- 2 Should interference occur between handset and other radio stations, move or disable Wi-Fi immediately.

3 For additional information and support, contact SoftBank Customer Support, General Information: From a SoftBank handset, call toll free at 157. To call toll free from a landline/IP phone, see "[Customer Service](#)."

Frequency Band

This radio station utilizes 2.4 GHz band with DSSS-OFDM modulation. Maximum transmission radius is 40 meters (131 feet).

2.4DS4/OF4

■Simultaneous Use with Bluetooth®

Wi-Fi (IEEE 802.11b/g/n) and Bluetooth® transmit on the 2.4 GHz band. Enabling handset Bluetooth® or using Bluetooth® devices near handset may affect Wi-Fi transmission speed, availability and clarity. Should interference occur, cancel handset Bluetooth® or discontinue Bluetooth® device use.

- Handset supports Wi-Fi channels 1 - 13. Handset will not connect to access points set to other channels.
- Available channels vary by country.
- For use of Wi-Fi aboard aircraft, check with airline beforehand.
- In some countries/regions, such as France, there are restrictions on the use of Wi-Fi. If you intend to use Wi-Fi on handset abroad, confirm the local laws and regulations beforehand.

Bluetooth® Function

SoftBank Mobile is not liable for any damages resulting from data/information leakage due to use of handset Bluetooth® function.

■Precautions

The frequency band utilized by handset Bluetooth® function is shared with industrial, scientific or medical equipment, including household microwave ovens, etc., and used by radio stations, amateur radio stations, etc. (hereafter "other radio stations").

1 Before using Bluetooth®, visually confirm that no other radio stations sharing the same frequency band are in use nearby.

2 Should interference occur between handset and other radio stations, move or cancel Bluetooth® function immediately.

3 For additional information and support, contact SoftBank Customer Support, General Information: From a SoftBank handset, call toll free at 157. To call toll free from a landline/IP phone, see "[Customer Service](#)."

Frequency Band

This radio station utilizes 2.4 GHz band with FHSS modulation. Maximum transmission radius is 10 meters (32 feet). It is not possible for the radio station to avoid using the frequency band of the mobile unit identification apparatus.



Handset & Hardware Care

Handset & Hardware Care

- If handset is left with no battery or an exhausted one, data may be altered/lost. SoftBank Mobile is not liable for any resulting damages.
- Use handset within 5°C - 35°C (up to 40°C for brief periods in bath/shower rooms, etc.) and 35% - 90% humidity.
- Avoid extreme temperature or direct sunlight.
- Handset/battery may warm during operation or while charging. This is normal.
- Warranty does not cover malfunctions resulting from misuse.
- Exposing lens to direct sunlight may damage color filter and affect image color.
- Battery may not charge properly if port/terminals are obstructed by dust, etc. Clean with dry cloth, cotton swab, etc.
- Clean handset with soft dry cloth. Alcohol/solvent use may fade color/print.
- Avoid scratching Display.
- Avoid heavy objects or excessive pressure. May cause malfunction or injury.
 - Do not sit on handset in back pants pocket.
 - Do not place heavy objects on handset inside handbags, packs, etc.
- Connect only specified products to Port. Other devices may malfunction or cause damage.
- Always power off before removing battery. If battery is removed while saving data or sending mail, data may be lost, changed or destroyed.
- Do not power off while using SD Card; may result in data loss or malfunction.
- When walking outside, moderate handset volume to avoid accidents.
- Avoid covering Speaker while using handset.

Touch Panel

- Touch Panel may not respond in these situations:
 - Use with gloves/long fingernails
 - Use of pens, pencils or sharp objects
 - Use with objects on/against Display
- To prevent malfunctions, do not:
 - Touch Display with wet fingers
 - Use if Display is wet
 - Subject Display to force/pressure
 - Place labels or stickers over Display
- If Display is wet, wipe it with soft cloth.
- To improve response, calibrate Touch Panel as follows:
 - MENU → Settings → About phone → Adjust touch panel → Follow onscreen instructions

Headphones

Headphones with Microphone (SHLDL1) and 3.5 mm Micro USB Plug (SHDDU1) are available for separate purchase. Other devices may not function properly on SoftBank 101SH.

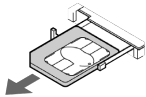
TV Antenna (Retractable)

Pull Antenna by top part fully. After use, gently retract Antenna aligning top and bottom parts. Do not carry handset with Antenna extended; damage may result.

USIM Tray


Do not apply excessive force to USIM Tray; may result in breakage.

- Remember these points when inserting/removing USIM Card:
 - Pull out USIM Tray slowly and gently
 - Insert USIM Card with IC Chip up
 - After inserting USIM Card, push in USIM Tray until it stops
 - When removing USIM Card, slide it out of USIM Tray



When Handset Freezes

If handset has stopped processing or won't respond to touch/key press, restart it as follows:

Remove battery → Wait a few seconds → Install battery →  (Long)

Resetting Handset

Reset all deletes all handset files irreversibly. (Some preinstalled applications are also deleted.) To delete all SD Card files simultaneously, select **Erase microSD** before tapping **Reset phone**.

MENU → Settings → Privacy → Reset all → Enter Handset Code → OK → Reset phone → Erase everything

Picasa Web Albums Synchronization

Save a Google Account associated with Picasa Web Albums to handset. If you save a Google Account to handset then create a Picasa Web Albums account with that Google Account, corresponding Picasa Web Albums is unsynchronizable on handset.

Extending Battery Time

MENU → Settings → Energy saving settings → Emergency → OK

- If confirmation appears, follow onscreen instructions.
- Use three modes (**Normal** , **Waza-ari** and **Emergency**) as needed.
- **Emergency** minimizes Brightness and disables Wi-Fi, GPS and some other transmissions.

General Notes

Portrait Rights

Portrait rights protect individuals' right to refuse to be photographed or to refuse unauthorized publication/use of their photographs. Portrait rights consist of the right to privacy, which is applicable to all persons, and the right to publicity, which protects the interests of celebrities. Therefore, photographing others including celebrities and publicizing/distributing their photographs without permission is illegal; use Camera responsibly.

Copyrights

Copyright laws protect sounds, images, computer programs, databases, other materials and copyright holders. Duplicated material is limited to private use only. Use of materials beyond this limit or without copyright holder permission may constitute copyright infringement, and be subject to criminal punishment. Comply with copyright laws when using images captured with Camera.

The software contained in handset is copyrighted material; copyright, moral right and other related rights are protected by copyright laws. Do not copy, modify, alter, disassemble, decompile or reverse-engineer the software; do not separate it from hardware in whole or part.

Electromagnetic Waves

For body-worn operation, this phone has been tested and meets RF exposure guidelines when used with accessories containing no metal, that position handset a minimum of 15 mm from the body. Use of other accessories may not ensure compliance with RF exposure guidelines.

CE Declaration of Conformity

In some countries/regions, such as France, there are restrictions on the use of Wi-Fi. If you intend to use Wi-Fi on the handset abroad, confirm the local laws and regulations beforehand.

Hereby, Sharp Telecommunications of Europe Ltd, declares that 101SH is in compliance with the essential requirements and other relevant provisions of Directive 1999/5/EC. A copy of the original declaration of conformity for each model can be found at the following Internet address: <http://www.sharp.co.jp/k-tai/>

CE 0168 

Battery Cautions

Use specified battery or Charger only.

Non-specified equipment use may cause malfunctions, electric shock or fire due to battery leakage, overheating or bursting. Do not dispose of an exhausted battery with ordinary refuse; always tape over battery terminals before disposal. Take battery to a SoftBank Shop, or follow the local disposal regulations.

Charge battery in ambient temperatures between 5°C and 35°C; outside this range, battery may leak/overheat and performance may deteriorate.

European RF Exposure Information

Your mobile device is a radio transmitter and receiver. It is designed not to exceed the limits for exposure to radio waves recommended by international guidelines. These guidelines were developed by the independent scientific organization ICNIRP and include safety margins designed to assure the protection of all persons, regardless of age and health. The guidelines use a unit of measurement known as the Specific Absorption Rate, or SAR. The SAR limit for mobile devices is 2 W/kg and the highest SAR value for this device when tested at the ear was 0.424 W/kg*. As mobile devices offer a range of functions, they can be used in other positions, such as on the body as described in this use guide**. In this case, the highest tested SAR value is 0.301 W/kg. As SAR is measured utilizing the device's highest transmitting power the actual SAR of this device while operating is typically below that indicated above. This is due to automatic changes to the power level of the device to ensure it only uses the minimum level required to reach the Network. The World Health Organization has stated that present scientific information does not indicate the need for any special precautions for the use of mobile devices. They note that if you want to reduce your exposure then you can do so by limiting the length of calls or using a handsfree device to keep the mobile phone away from the head and body. *The tests are carried out in accordance with international guidelines for testing.

**Please see "[Electromagnetic Waves](#)" for important notes regarding body-worn operation.

Headphone Signal Level

The maximum output voltage for the music player function, measured in accordance with EN 50332-2, is 24.0 mV.

FCC Notice

This device complies with part 15 of the FCC Rules. Operation is subject to the following two conditions:

(1) This device may not cause harmful interference, and (2) this device must accept any interference received, including interference that may cause undesired operation.

Changes or modifications not expressly approved by the manufacturer responsible for compliance could void the user's authority to operate the equipment.

FCC Information to User

This equipment has been tested and found to comply with the limits of a Class B digital device, pursuant to Part 15 of the FCC Rules. These limits are designed to provide reasonable protection against harmful interference in a residential installation. This equipment generates, uses and can radiate radio frequency energy and, if not installed and used in accordance with the instructions, may cause harmful interference to radio communications.

However, there is no guarantee that interference will not occur in a particular installation; if this equipment does cause harmful interference to radio or television reception, which can be determined by turning the equipment off and on, the user is encouraged to try to correct the interference by one or more of the following measures:

1. Reorient/relocate the receiving antenna.
2. Increase the separation between the equipment and receiver.
3. Connect the equipment into an outlet on a circuit different from that to which the receiver is connected.
4. Consult the dealer or an experienced radio/TV technician for help.

FCC RF Exposure Information

Your handset is a radio transmitter and receiver. It is designed and manufactured not to exceed the emission limits for exposure to radio frequency (RF) energy set by the Federal Communications Commission of the U.S. Government.

The guidelines are based on standards that were developed by independent scientific organizations through periodic and thorough evaluation of scientific studies. The standards include a substantial safety margin designed to assure the safety of all persons, regardless of age and health. The exposure standard for wireless handsets employs a unit of measurement known as the Specific Absorption Rate, or SAR. The SAR limit set by the FCC is 1.6 W/kg.

The tests are performed in positions and locations (e.g. at the ear and worn on the body) as required by the FCC for each model.

The highest SAR value for this model handset as reported to the FCC when tested for use at the ear is 0.076 W/kg, and when worn on the body in a holder or carry case, is 0.079 W/kg.

This device was tested for typical body-worn operations with the back of the handset kept 15 mm from the body. To maintain compliance with FCC RF exposure requirements, use accessories that maintain a 15 mm separation distance between the user's body and the back of the handset. The use of beltclips, holsters and similar accessories should not contain metallic components in its assembly.

The use of accessories that do not satisfy these requirements may not comply with FCC RF exposure requirements, and should be avoided.

The FCC has granted an Equipment Authorization for this model handset with all reported SAR levels evaluated as in compliance with the FCC RF emission guidelines. SAR information on this model handset is on file with the FCC and can be found at <http://www.fcc.gov/oet/fccid> under the Display Grant section after searching the corresponding FCC ID (APYHRO00155).

Additional information on Specific Absorption Rates (SAR) can be found on the Cellular Telecommunications & Internet Association (CTIA) Website at <http://www.ctia.org>.

Specific Absorption Rate (SAR)

Specific Absorption Rate (SAR)

SoftBank 101SH meets the government's requirements for exposure to radio waves.

These requirements are based on scientific basis to assure that radio waves emitted from mobile phones and other handheld wireless devices do not affect human health. They require that the Specific Absorption Rate (SAR), which is the unit of measurement for the amount of radiofrequency absorbed by the body, shall not exceed 2 W/kg*. This limit includes a substantial safety margin designed to assure the safety of all persons, regardless of age or health, and meets the international standard set by International Commission on Non-Ionizing Radiation Protection (ICNIRP) in cooperation with World Health Organization (WHO).

The highest SAR value of SoftBank 101SH is 0.599 W/kg. SAR tests were conducted with handset transmitting at its highest certified power level in accordance with testing methods set by the government. While there may be differences between the SAR levels for various handsets, they all meet the governmental requirements for safe exposure. The actual SAR level of the handset while operating can be well below the highest value.

This is because the handset is designed to operate at multiple power levels so as to use only the power required to reach the Network.

Additional information on SAR can be obtained on the following Websites.

Ministry of Internal Affairs and Communications (MIC)

<http://www.tele.soumu.go.jp/e/sys/ele/index.htm>

Association of Radio Industries and Businesses (ARIB)

<http://www.arib-emf.org/> (Japanese)

*Requirements are stipulated in Radio Law (Ordinance Regulating Radio Equipment, Article 14-2).

Water & Dust Resistance

Water & Dust Resistance

SoftBank 101SH complies with IPX5 (former JIS protection level 5)¹ and IPX7 (former JIS protection level 7)² water protection standards as well as IP5X (JIS protection level 5)³ dust protection standard, with Port Cover and Battery Cover closed firmly.

¹IPX5 compliant means that a handset continues to function as a phone after being subjected to a water jet (approximately 12.5 liters/min.) discharged from a nozzle (inner diameter: 6.3 mm), from all directions (approximately 3 m from handset) for at least 3 minutes.

²IPX7 compliant means that a handset continues to function as a phone after being gently submerged to the depth of 1 m in still tap water at room temperature, left there for approximately 30 minutes, then removed from it.

³IP5X compliant means that a handset continues to function as a phone and its safety is maintained after being agitated in a device containing dust of 75 µm or smaller in diameter for 8 hours, then removed from the device.

- Water/dust resistance may be affected under some circumstances. Warranty does not cover malfunctions resulting from misuse.
- SoftBank 101SH is compliant with IPX5, IPX7 and IP5X water/dust protection standards. However, ingress of dirt, sand, mud, metal powder, food, beverage, etc. may cause malfunction.

■ Important Notes

- Close Battery Cover and Port Cover firmly. Debris (hair, sand, fibers, etc.) trapped between Cover and base may expose handset to liquid/dust.
- If Battery/Port Cover is left open liquid exposure may cause handset malfunction/electric shock. Power off, then remove battery.
- If handset is wet, wipe it with dry cloth.
- Do not open/close Battery/Port Cover with wet hands or while handset is wet.
- Handset is only water resistant against fresh/tap water between 5°C - 35°C.

■ Dust Resistance

- SoftBank 101SH complies with IP5X dust protection standard. However, dust resistance may not be guaranteed under some circumstances (placing handset directly on sand, etc.).
- Remove dust from handset completely before use by rinsing off with water, etc.
- Any residue may damage Slider or Display; cause serious malfunction.

Precautions

- Do not subject handset to soap, detergent, bath powder/oil, sea/pool/spa water, hot water, etc.
- Rinse off sea/pool water, beverage, dirt, sand, mud, etc. immediately; residue may cause malfunction if allowed to dry.
- Rinse off sand, dirt, etc. completely before use; any residue may damage handset causing malfunction.
- Do not soak handset in bath or pool; never use it in water (including opening/closing of handset and pressing keys).
- Handset is not resistant to water pressure. Avoid high-pressure water/shower (over 6 liters/min.) or water immersion.
- Do not expose handset to extreme humidity for long periods; avoid prolonged use in bath/shower rooms.
- Do not use in saunas. Avoid hot air from dryers, etc.
- Use handset within 5°C - 35°C (up to 40°C for brief periods in bath/shower rooms, etc.) and 35% - 90% humidity.
- Avoid extreme temperature (near stoves, inside refrigerators, etc.).
- Volume may be low when Microphone/Earpiece/Speaker is wet; dry handset before use (see "[Drying Handset](#)").
- Battery and optional accessories are not water or dustproofed.
- Do not subject handset to strong impacts; do not poke Microphone, Earpiece, Speaker, Camera Ornament, etc. with a cotton swab or sharp object; water/dust resistance may be affected.
- Avoid placing handset directly on sand. Sand may penetrate Earpiece, Speaker, etc., resulting in low volume.
- Sand, etc. trapped between Slider and the base may cause excessive friction or noise when opening/closing Slider.
- Touch Panel may not respond properly if wet or touched with wet fingers.
- Do not move handset directly from a cold place to a warm humid place; condensation may occur. Should this happen, dry handset naturally at room temperature.
- SoftBank 101SH does not float on water.
- Keep handset out of heavy rain.
- Do not let liquid-exposed handset remain wet; exposure to cold may freeze liquid causing malfunction.
- Damaged Battery/Port Cover affects water/dust resistance; contact a SoftBank Shop.

Charging Precautions

- Battery and optional accessories are not water or dustproofed. Avoid moisture (precipitation, bath/shower, etc.); may cause fire, electric shock or damage.
- Never charge battery while handset is wet; may cause fire or damage due to electric shock or short-circuit.
- Do not touch Charger with wet hands. Electric shock may occur.
- Do not use Charger in rooms in which water is regularly in use (kitchens, bath/shower rooms, etc.); may cause fire or electric shock.
- Should External Connector Port be exposed to liquid, never charge battery; follow these steps first:
 - 1 Holding handset firmly by its sides, shake it about 20 times
 - 2 Pat against dry cloth to remove moisture from External Connector Port
 - 3 Leave handset on dry cloth for approximately 2 - 3 hours at room temperature

Care & Maintenance

- Proper care of the gasket around Battery Cover is crucial for continued handset water/dust resistance. Observe the following:
 - Do not remove or damage gasket. Keep it clean.
 - Do not insert sharp objects through Battery Cover gaps; may damage gasket and affect water/dust resistance.
 - If Battery Cover gasket is damaged or deformed, contact a SoftBank Shop.
- To maintain water/dust resistance, replace related parts every two years regardless of their condition. Customer-requested parts replacement incurs fees and requires handset submission. For details, contact a SoftBank Shop or SoftBank Customer Support, [General Information](#).

Washing Handset

Wipe off dirt, sand, beverage, etc., gently with cloth. Then with Battery Cover closed, hold handset approximately 10 cm below faucet or shower head and wash with low-pressure tap water (6 liters/min. or lower) at normal temperature (5°C - 35°C). Wash with your hands, taking care not to open Covers; do not use a brush or sponge. Dry handset before use.

- Before washing handset, make sure that Battery Cover and Port Cover are closed firmly.
- Do not use a washing machine or ultrasonic cleaner.
- Do not place handset in a microwave oven to dry it. Battery/handset may leak, burst, overheat or ignite; may cause malfunction, accident or injury.
- Do not dry handset by exposing it to extreme heat (hot air from dryers, etc.); may cause warping, discoloration or damage.

Drying Handset

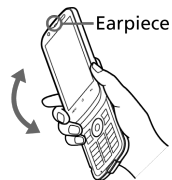
Dry Earpiece, Microphone, Speaker and Camera Ornament when exposed to water.

1

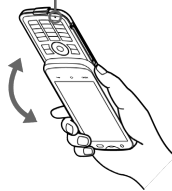
Wipe handset surface with dry cloth

2

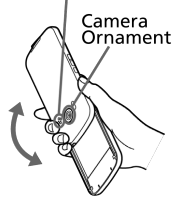
Holding handset firmly by its sides, shake it about 20 times



Microphone

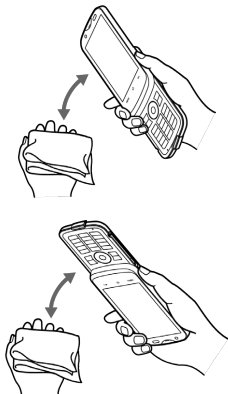


Speaker



3

Pat against dry cloth to remove moisture from grooves



4

Leave handset on dry cloth for approximately 2 - 3 hours at room temperature

! Important

Do not use wet handset.

- Voice quality may be affected, or moisture may transfer to clothes, bag, etc.
- Moisture may short-circuit Port.
- Exposure to cold may freeze moisture; cause malfunction.

101SH User Guide Index

A

About Phone.....	91
About USIM Card.....	7
Accounts & Sync Settings.....	89
Android Market™.....	29
Applications.....	21
Application Settings.....	88

B

Battery Installation.....	13
Browsing the Internet.....	64

C

Calling from Outside Japan.....	80
Call Settings.....	86
Charging Battery.....	14
Connecting to Wi-Fi.....	74
Creating/Sending Email.....	63
Creating/Sending Gmail.....	60
Customer Service.....	95
Customizing Home Screen.....	41
Customizing Standby.....	43

D

Date & Time Settings.....	91
---------------------------	----

E

Email Settings.....	62
---------------------	----

F

FCC Notice.....	109
-----------------	-----

G

General Notes.....	108
Global Roaming.....	80

H

Handling S! Mail/SMS.....	60
Handset & Hardware Care.....	106
Handset Interface.....	20
Handset Power On/Off.....	15
Home Screen Basics.....	36

I

Important Product Information.....	104
Introduction.....	3

L

Language & Keyboard Settings.....	90
Launcher Basics.....	38

M

Mail Types.....	56
Mobile Manners.....	24
Music.....	72
My Phone Number.....	23

N

Notifications Panel.....	40
--------------------------	----

O

Opening Received Email.....	63
Opening Received Gmail.....	61
Optional Services.....	47

P

Package Contents.....	6
Parts & Functions.....	6
Photo Camera.....	68
Placing/Answering Calls.....	46
Privacy Setting.....	89

R

Receiving & Replying S! Mail/SMS.....	58
---------------------------------------	----

S

Safety Precautions.....	98
SD Card.....	9
Security Codes.....	31
Sending S! Mail/SMS.....	56
Sleep Mode.....	33
Slider Positions.....	16
Software Update.....	33
Sound Settings.....	86
Specific Absorption Rate (SAR).....	110
Specifications.....	94
Standby Basics.....	37
Status Bar.....	39
Still Images & Video.....	72

T

Text Entry (Handset Keys).....	24
Text Entry (Touch Panel).....	26

U

USIM PIN.....	32
Using Address Book.....	52
Using Bluetooth®.....	76
Using Google Accounts.....	28
Using Handset Keys.....	17
Using Touch Panel.....	18

V

Video Camera.....	69
-------------------	----

W

Water & Dust Resistance.....	110
Wireless & Network Settings.....	84

SoftBank 101SH User Guide

December 2011, First Edition
SOFTBANK MOBILE Corp.

Visit [SoftBank Shop](#) for assistance

Model : SoftBank 101SH
Manufacturer : SHARP CORPORATION