

Wi-Fi (WLAN)	3-2
Connecting Wi-Fi Devices via Wi-Fi (WLAN)	3-3
Connecting WPS Supported Wi-Fi Devices	3-3
Connecting Game Consoles	3-3
Connecting Android Devices	3-4
Connecting Windows	3-5
Windows 7	3-5
Windows Vista	3-6
Windows XP	3-7
Connecting Mac	3-8

Wi-Fi router supports IEEE 802.11b/g/n standards. Connect Wi-Fi devices (PC, game console, etc.) via Wi-Fi for wireless data transfers. Wi-Fi router supports Wi-Fi Protected Setup (WPS), which easily configures Wi-Fi connection settings on any WPS compliant Wi-Fi device. Enter Wi-Fi router's SSID and security keys to connect non-WPS compliant Wi-Fi devices. See WLAN Initialization Sticker for SSID and security keys.

This section describes setup operations to establish initial Wi-Fi connection to WPS supported Wi-Fi devices, game consoles, smartphones, Windows and Mac.



- Data communication is unavailable even if Wi-Fi router is connected to PC with USB Cable.
- These settings should be performed the first time Wi-Fi router is connected to another Wi-Fi device. Thereafter, simply activate Wi-Fi to automatically connect Wi-Fi router to Wi-Fi device (e.g. Reconnect Automatically is set).
- Modify settings of Wi-Fi function as required. See "Settings" (P.4-1).
- For added security, change default SSID or security key.
- Use Wi-Fi router to connect up to 20 Wi-Fi devices simultaneously.

Connecting WPS Supported Wi-Fi Devices

WPS function is disabled when Wi-Fi Security Setting is set to **WEP** or **WPA-PSK (TKIP)**. Change Wi-Fi Security Setting in SoftBank 101SB WebUI. See “LAN WiFi” under “LAN setting” (P.4-14).

1 Power on Wi-Fi router

Activate Wi-Fi for an Internet connection.

2 Turn on Wi-Fi function of Wi-Fi device → Prepare for WPS settings as required

3 Press and hold WPS Button

WPS selection window appears.



4 Press Power Button

WPS Processing appears.

5 Connect Wi-Fi devices via WPS

When complete, **WPS Succeed** appears.

- Operations vary depending on Wi-Fi devices.

6 If other settings are required with Wi-Fi devices, follow the onscreen instructions

Connected Wi-Fi device count on Wi-Fi router Display increases by one.

- Press Power Button to cancel WPS.
- Connection is disabled when **SSID Stealth** is set to **Enable**; set **Disable** in SoftBank 101SB WebUI. See “LAN WiFi” under “LAN setting” (P.4-14).

Connecting Game Consoles

This section describes operation when authentication method of Wi-Fi security setting is set to WPA/WPA2. For other security settings, some steps may vary. See game console user guide for details.

1 Power on Wi-Fi router

Activate Wi-Fi for an Internet connection.

2 Turn on game console's Wi-Fi function

3 Search access point with game console

4 Select an item showing Wi-Fi router's SSID

- See WLAN Initialization Sticker for SSID.
- If Wi-Fi router's SSID has changed, select an item showing current SSID.

5 Enter security key → Save settings

Connected Wi-Fi device count on Wi-Fi router Display increases by one.

- See WLAN Initialization Sticker for security key.

Connecting Android Devices

This section describes operation when authentication method of Wi-Fi security setting is set to WPA/WPA2. For other security settings, some steps may vary. See Android device user guide for details.

1 Power on Wi-Fi router

Activate Wi-Fi for an Internet connection.

2 Tap **Settings** → **Wireless & networks** → **Wi-Fi settings**

3 Checkmark **Wi-Fi**

Wi-Fi function is enabled.

4 Select an item showing Wi-Fi router's SSID

- See WLAN Initialization Sticker for SSID.
- If Wi-Fi router's SSID has changed, select an item showing current SSID.

5 Enter security key → Tap **Connect**

Connected Wi-Fi device count on Wi-Fi router Display increases by one.

- See WLAN Initialization Sticker for security key.

This section describes operation when authentication method of Wi-Fi security setting is set to WPA/WPA2.

Windows 7

1 Power on Wi-Fi router

Activate Wi-Fi for an Internet connection.

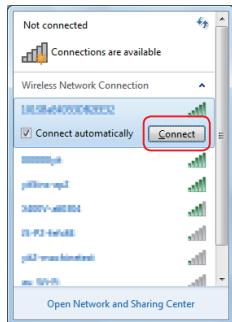
2 Turn on PC's Wi-Fi function

3 From Start menu, click **Control Panel** → **Network and Internet** → **Network and Sharing Center**

4 Click **Connect to a network**

5 Select an item showing Wi-Fi router's SSID → Click **Connect**

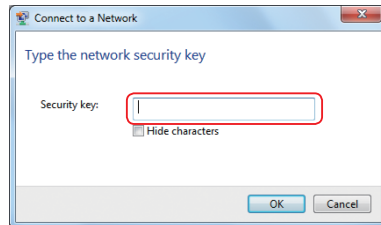
- See WLAN Initialization Sticker for SSID.
- If Wi-Fi router's SSID has changed, select an item showing current SSID.



6 Enter security key in **Security key** → Click **OK**

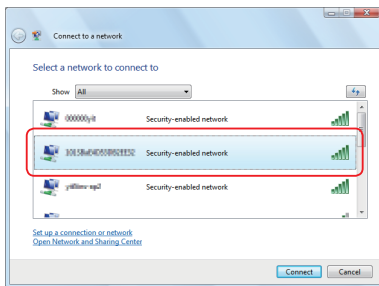
Connected Wi-Fi device count on Wi-Fi router Display increases by one.

- See WLAN Initialization Sticker for security key.



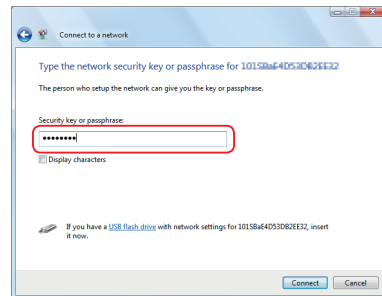
Windows Vista

- 1 Power on Wi-Fi router**
Activate Wi-Fi for an Internet connection.
- 2 Turn on PC's Wi-Fi function**
- 3 From Start menu, click *Control Panel* → Select *Network and Internet* → *Network and Sharing Center***
- 4 Click *Connect to a network***
- 5 Select an item showing Wi-Fi router's SSID → Click *Connect***
 - See WLAN Initialization Sticker for SSID.
 - If Wi-Fi router's SSID has changed, select an item showing current SSID.



- 6 Enter security key in *Security key or passphrase* → Click *Connect***

- See WLAN Initialization Sticker for security key.

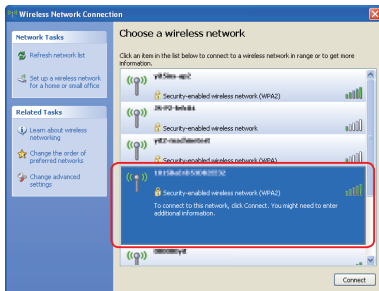


- 7 Click *Close***

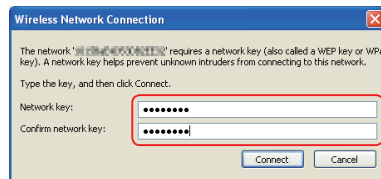
Connected Wi-Fi device count on Wi-Fi router Display increases by one.

Windows XP

- 1 Power on Wi-Fi router**
Activate Wi-Fi for an Internet connection.
- 2 Turn on PC's Wi-Fi function**
- 3 From Start menu, click *Control Panel* → *Network and Internet Connections* → *Network connections***
- 4 Click *Wireless Network connection* → In *Network Tasks*, click *View available wireless networks***
- 5 Select an item showing Wi-Fi router's SSID → Click *Connect***
 - See WLAN Initialization Sticker for SSID.
 - If Wi-Fi router's SSID has changed, select an item showing current SSID.



- 6 Enter security key in *Network key* and *Confirm network key* → Click *Connect***
Connected Wi-Fi device count on Wi-Fi router Display increases by one.
 - See WLAN Initialization Sticker for security key.



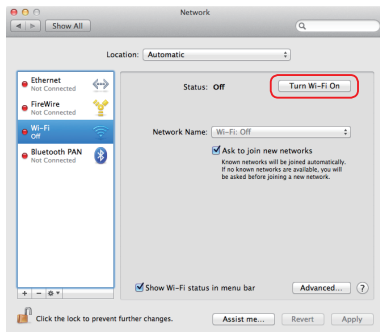
This section describes operation for Mac OS X 10.7 and when authentication method of Wi-Fi security setting is set to WPA/WPA2.

1 Power on Wi-Fi router

Activate Wi-Fi for an Internet connection.

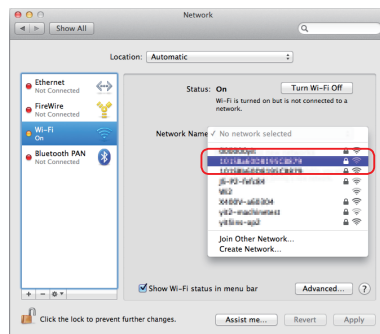
2 From Apple menu, click **System Preferences...** → **Network**

3 Select **Wi-Fi** → Click **Turn Wi-Fi On**



4 In **Network Name** pulldown list, select an item showing Wi-Fi router's SSID

- See WLAN Initialization Sticker for SSID.
- If Wi-Fi router's SSID has changed, select an item showing current SSID.



5 Enter security key in **Password** → Click **Join**

- Checkmark **Remember this network** if not checkmarked.
- See WLAN Initialization Sticker for security key.

**6** Confirm **Network Name** is set to Wi-Fi router's SSID → Click **Apply**

Connected Wi-Fi device count on Wi-Fi router Display increases by one.