

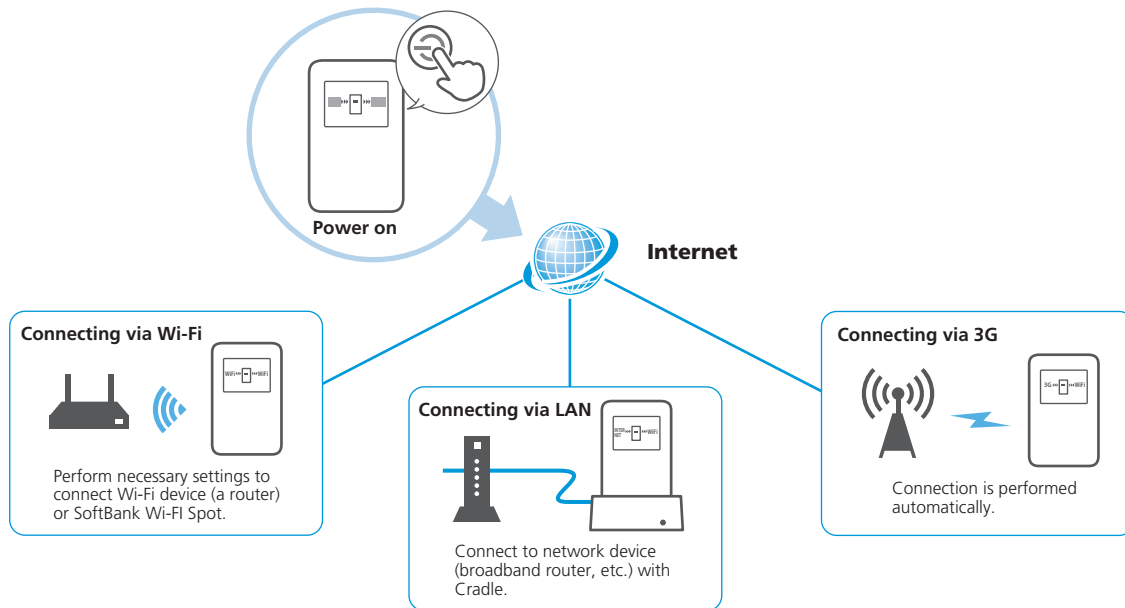
Internet Connectivity	2-2
Connecting to 3G	2-3
Connecting to Wi-Fi (WLAN)	2-3
Wi-Fi	2-3
Connecting to non-WPS Supported Wi-Fi Device.....	2-4
Connecting to WPS Supported Wi-Fi Device.....	2-5
Connecting to SoftBank Wi-Fi Spot	2-5
Connecting to LAN	2-7
Using Cradle	2-7

Internet Connectivity

When first powering on, Wi-Fi router automatically connects to Internet; via 3G connection, Wi-Fi or LAN depending on environment.
When Wi-Fi router can be connected to LAN, 3G or Wi-Fi is disconnected and Wi-Fi router switches to LAN.

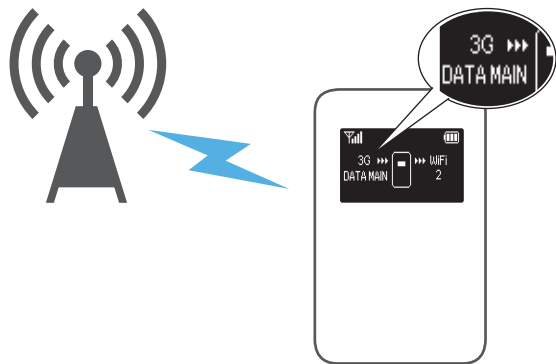
2

Internet Connectivity



- When powering on for the first time, Setting Window for SoftBank Wi-Fi Spot appears. See "Connecting to SoftBank Wi-Fi Spot" (P.2-5).

Wi-Fi router automatically connects to 3G if LAN or Wi-Fi is not connected or is disconnected.



- Wi-Fi router is not connected to Internet when only **3G** appears for Connection Status. When **DATA MAIN** or **DATA SUB** appears, Wi-Fi router is connected to Internet.
- If not using 3G, set **3G connection** to **Off** in SoftBank 1015B WebUI. See "3G" under "Internet setting" (P.4-8).

Wi-Fi

Wi-Fi router supports IEEE 802.11b/g/n standards. Connect Wi-Fi devices to Internet via Wi-Fi.

Wi-Fi router supports Wi-Fi Protected Setup (WPS), which easily configures Wi-Fi connection settings on any WPS compliant Wi-Fi device.

Enter Wi-Fi router's SSID and WEP keys to connect non-WPS compliant Wi-Fi devices.

This section describes setup operations for connecting to Internet via Wi-Fi.

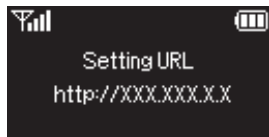
- These settings should be performed the first time Wi-Fi router is connected to another Wi-Fi device. Thereafter, simply power on Wi-Fi router in a Wi-Fi available area.
- Change Wi-Fi settings as required. See "Settings" (P.4-1).

Connecting to non-WPS Supported Wi-Fi Device

Connect to Internet via non-WPS supported Wi-Fi device.
Setup operation with PC is described here.

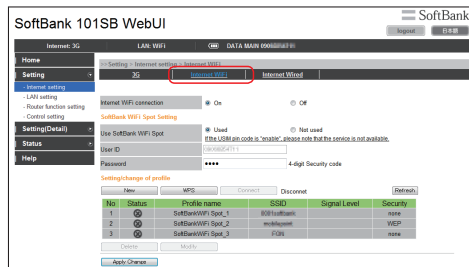
- 1 Power on Wi-Fi router**
Activate Wi-Fi for an Internet connection.
- 2 Turn on Wi-Fi function of Wi-Fi device**
- 3 Power on PC and connect Wi-Fi router via Wi-Fi**
- 4 Press WPS Button → View Setting URL**

Setting URL is set to
"http://192.168.255.1" by default.



- 5 Enter URL in Web browser**
SoftBank 101SB WebUI appears.
- 6 Enter password and click *login***
Password is set to "admin" by default.

- 7 In Menu list, click *Setting* → *Internet setting* → *Internet WiFi***



- 8 In *Setting/change of profile*, click *New***
Profile creation window for Wi-Fi access point appears.
- 9 Click *Scan* in *SSID* → Select an item showing Wi-Fi device's SSID → Click *Select***
- 10 Enter security key in *Security key***
- 11 Enter optional profile name in *Profile name* → Click *Apply Change***
When complete, **WiFi** appears for Connection Status.
 - If connection failed, select set profile in **Setting/change of profile**, and then click **Connect**.
 - See Step 2 in "Setting Wi-Fi Access Point Profile" (P.4-10) for details.

Connecting to WPS Supported Wi-Fi Device

Connect to Internet via WPS supported Wi-Fi device.

1 Power on Wi-Fi router

Activate Wi-Fi for an Internet connection.

2 Turn on Wi-Fi function of Wi-Fi device → Prepare for WPS settings as required

3 Press and hold Wi-Fi router's WPS Button

WPS Selection Window appears.



4 Press WPS Button

WPS Processing appears.

5 Press Wi-Fi device's WPS Key or make connection settings

When complete, *WPS Succeed* appears.

- Operations vary depending on Wi-Fi device.

6 If other settings are required with Wi-Fi device, follow the onscreen instructions

Connection Status turns to *WiFi*.

- To cancel WPS, press Power Button.

Connecting to SoftBank Wi-Fi Spot

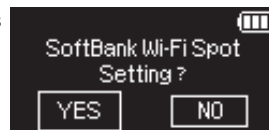
To use SoftBank Wi-Fi Spot, enter password into setting window, which appears when powering on for the first time.

Four-digit password is required.

1 If SoftBank Wi-Fi Spot settings window appears, confirm that **YES** is selected → Press Power Button

Enter Login Password window appears.

- When **NO** is selected, press WPS Button to select **YES**.



2 Press Power Button to enter password

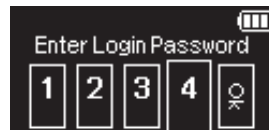
- Press Power Button firmly until number is changed.
- Press Power Button to toggle number



3 Press WPS Button to go to next box

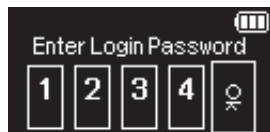


4 Repeat Steps 2 - 3 and enter four-digit password



5 Confirm password and press Power Button at fifth box (OK)

- To return to first box, press WPS Button.



- If you do not use SoftBank Wi-Fi Spot or will perform settings later, press WPS Button to select **NO** in Step **1**, and press Power Button.
- If making settings later, perform them from SoftBank 101SB WebUI. See “Internet WiFi” (P.4-8).
- If wrong password is entered for SoftBank Wi-Fi Spot, reset Wi-Fi router and enter password again.
For reset procedure, see “Resetting factory defaults (Reset)” (P.5-4).

Using Cradle

Use Cradle to connect Wi-Fi router to other network devices via LAN. Connecting to a broadband router via Cradle LAN Port enables connection to Internet via a Wi-Fi device and broadband line.

- 1 Insert LAN cable into broadband router, etc.
- 2 Insert LAN cable into Cradle LAN Port
- 3 Insert Micro USB Cable Micro USB plug into Cradle
- 4 Insert Micro USB Cable plug into AC Charger
- 5 Plug AC Charger into AC 100 V outlet
Cradle Power Lamp illuminates in red.
- 6 Insert Wi-Fi router into Cradle
Cradle Power Lamp illuminates in green; **INTERNET** appears for Connection Status.

- Connect both LAN cable and AC Charger for LAN connection via Cradle. Without AC Charger, connection is not possible.
- If malfunction occurs on broadband line and LAN connection is disabled, Wi-Fi router automatically connects to 3G. Packet communication fee is incurred when connecting to 3G. If not using 3G, set **3G connection** to **Off** in SoftBank 1015B WebUI. See "3G" under "Internet setting" (P.4-8).

