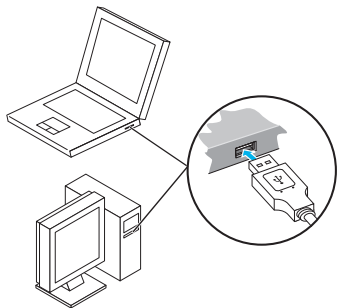




Using Micro USB Cable (PC)	3-2
Device Recognition (PC).....	3-2
Software Installation (PC).....	3-2
Connecting to Internet.....	3-7
Device Removal (PC).....	3-8

Device Recognition (PC)

- 1 Insert Micro USB Cable micro plug into Wi-Fi router (USIM Card installed) External Device Port
- 2 Insert Micro USB Cable plug into PC USB Port
PC should recognize Wi-Fi router within a few minutes.



System message appears upon device recognition. Install driver for initial activation. See Software Installation (PC)

- Wi-Fi router may fail if PC enters sleep mode, etc. with it connected. Remove Wi-Fi router before leaving a PC unattended, etc. Wi-Fi router may malfunction if connected before PC starts/restarts. Remove Wi-Fi router before starting or restarting PC.

Software Installation (PC)

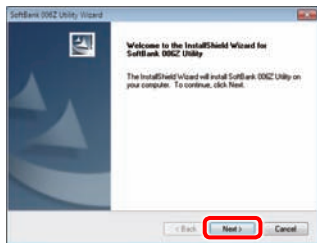
Router driver and SoftBank 006Z Utility are saved in advance. For initial activation, they are installed automatically.

- Do not remove Wi-Fi router during installation. May cause installation failure, system malfunction or other system errors.
- Login using administrator privileges.

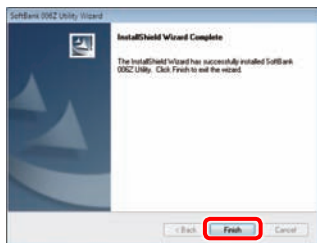
Driver Installation (Windows 7)

- 1 Power on PC and initiate Windows
- 2 Connect Wi-Fi router to PC via Micro USB Cable
- 3 Installer activates a few seconds after connection
 - If an older version of Utility is already installed a message appears. Remove old version before installation.
 - If installer does not activate automatically, see (P.3-5).
- 4 In AutoPlay, click **Run AutoRun.exe**
- 5 If User Account Control appears, click **Yes**
- 6 設定言語の選択 appears, select 英語 → **OK**

- 7 Welcome to the InstallShield Wizard for SoftBank 006Z Utility dialog box appears. Click **Next**



- 8 When dialog box below appears, click **Finish**



- 9 Utility shortcut icon appears and installation starts in the background. Web browser activates and SoftBank 006Z Utility appears

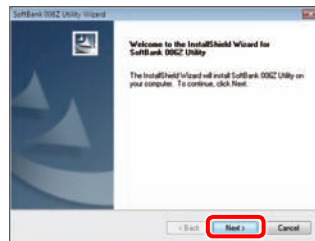
- Restart PC if it does not function correctly.

Driver Installation (Windows Vista)

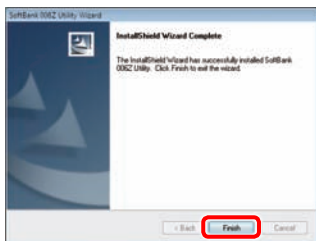
- 1 Power on PC and initiate Windows
- 2 Connect Wi-Fi router to PC via Micro USB Cable
- 3 Installer activates a few seconds after connection

- If an older version of Utility is already installed a message appears. Uninstall old version before installation.
- If installer does not activate automatically, see (P.3-6).

- 4 In AutoPlay, click **Run AutoRun.exe**
- 5 If User Account Control appears, click **Continue**
- 6 設定言語の選択 appears, select 英語 → **OK**
- 7 Welcome to the InstallShield Wizard for SoftBank 006Z Utility dialog box appears. Click **Next**



- 8 When dialog box below appears, click **Finish**



- 9 Utility shortcut icon appears and installation starts. Web browser activates and SoftBank 006Z Utility appears

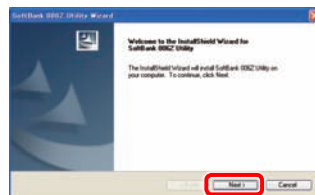
- Restart PC if it does not function correctly.

Driver Installation (Windows XP)

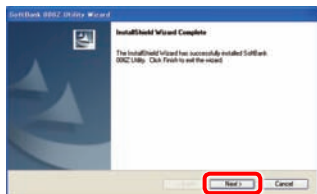
- 1 Power on PC and initiate Windows
- 2 Connect Wi-Fi router to PC via Micro USB Cable
- 3 Installer activates a few seconds after connection

- If an older version of SoftBank 006Z Utility is already installed a message appears. Uninstall old version before installation.
- If installer does not activate automatically, see (P.3-6).

- 4 設定言語の選択 appears, select 英語 → OK
- 5 Welcome to the InstallShield Wizard for SoftBank 006Z Utility dialog box appears. Click **Next**



- 6** When dialog box below appears, click *Finish*



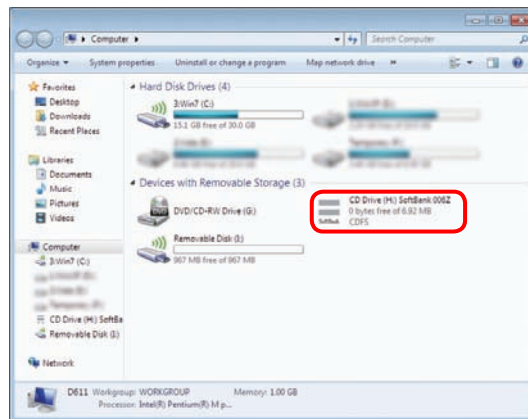
- 7** Utility shortcut icon appears and installation starts. Web browser activates and SoftBank 006Z Utility appears

- Restart PC if it does not function correctly.

Manual Installation (Windows 7)

If installer fails to start automatically, follow these steps:
*Always power on PC before connecting Wi-Fi router to PC via Micro USB Cable.

- 1** In Start menu, click *Computer*
- 2** Double-click *SoftBank 006Z*



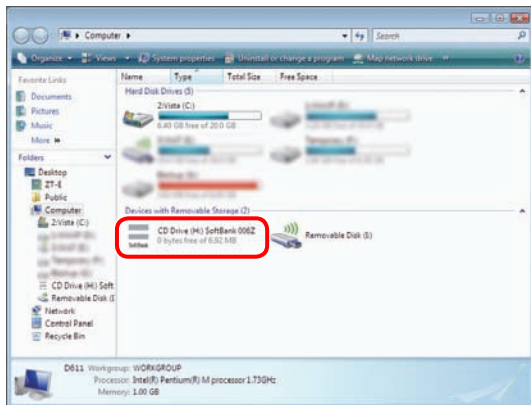
- 3** If User Account Control appears, click *Yes*
- 4** 設定言語の選択 appears, see "Driver Installation (Windows 7)" (P.3-2) after Step **6**

Manual Installation (Windows Vista)

If installer fails to start automatically, follow these steps:

*Always power on PC before connecting Wi-Fi router to PC via Micro USB Cable.

- 1 In Start menu, click **Computer**
- 2 Double-click **SoftBank 006Z**



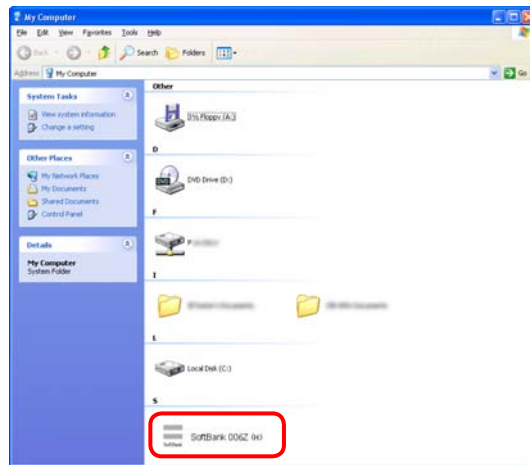
- 3 If User Account Control appears, click **Continue**
- 4 設定言語の選択 appears, see "Driver Installation (Windows Vista)" (P.3-3) after Step 6

Manual Installation (Windows XP)

If installer fails to start automatically, follow these steps:

*Always power on PC before connecting Wi-Fi router to PC via Micro USB Cable.

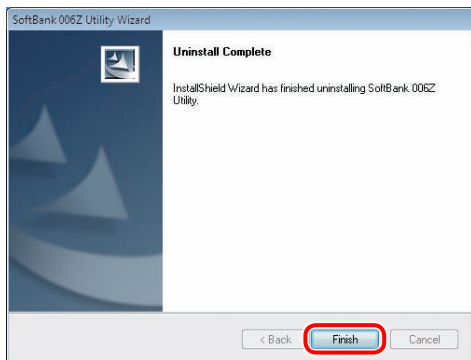
- 1 In Start menu, click **Computer**
- 2 Double-click **SoftBank 006Z**



- 3 設定言語の選択 appears, see "Driver Installation (Windows XP)" (P.3-4) after Step 5

Uninstalling Driver

- 1 Select **Start** → **All Programs** → **SoftBank 006 Utility** → **Uninstall**
- 2 User Account Control appears. Click **Yes**
 - For Windows Vista, click **Continue**.
 - For Windows XP, screen does not appear.
- 3 **Do you want to completely remove the selected application and all of its features?** confirmation appears. Click **Yes**
- 4 **Please remove USB MODEM from PC, before uninstalling!** confirmation appears. Click **Yes** to start uninstallation
- 5 Upon uninstallation, dialog box below appears. Click **Finish** to end uninstallation




Connecting to Internet

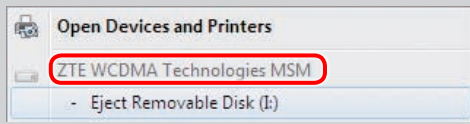
- 1 **Wi-Fi router: Activate WAN Connection Mode**
 - WAN Connection Mode is set to Always On by default. Press CONNECT Key or connect Wi-Fi router to PC and use SoftBank 006Z Utility to change it to Manual. See "Internet Connectivity" (P.5-21).

Device Removal (PC)

- Close SoftBank 006Z Utility before removing Wi-Fi router. Do not remove Wi-Fi router during transmissions.

For Windows 7, exit Utility before removing Wi-Fi router.

- With Memory Card installed, in Task Tray, click  then click Eject Removable Disk. Once Wi-Fi router can be removed safely, remove it.

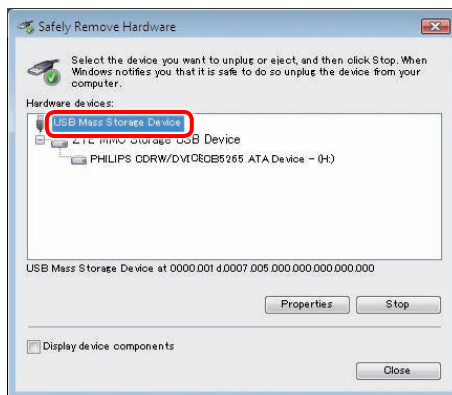


For Windows Vista/Windows XP, click Removable Disk before removing Wi-Fi router.

1 Double-click on Task Tray

- For Windows XP, double-click  in Task Tray.

2 Safely Remove Hardware appears. Select **USB Mass Storage Device** and click **Stop**



- For Windows XP, USB Mass Storage Device appears.

3 Stop a Hardware device appears. If Wi-Fi router can be safely removed from PC, click **OK**



4 When **Safely Remove Hardware** appears, disconnect the Wi-Fi router

