

SoftBank 004Z Utility Operations Guide (Mac)	5-2
Overview.....	5-2
Packet Communication Settings.....	5-3
Connecting/Disconnecting.....	5-4
Connection Record.....	5-5
Confirming Settings	5-6

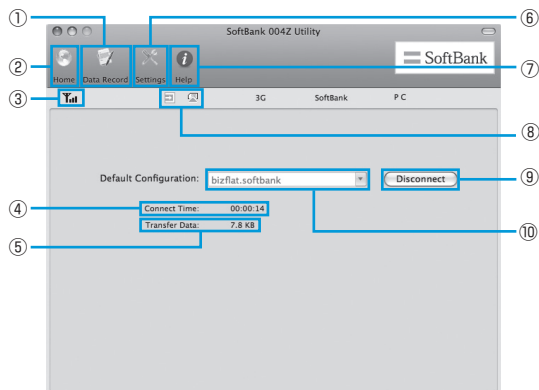
Overview

Initiating SoftBank 004Z Utility

Insert modem USB plug into Mac USB port. SoftBank 004Z Utility activates automatically.

- If SoftBank 004Z Utility does not activate automatically, double click "Macintosh HD" → "Applications" → "SoftBank 004Z Utility."
- "Macintosh HD" is hard disk name. It may vary.

Main Screen of SoftBank 004Z Utility



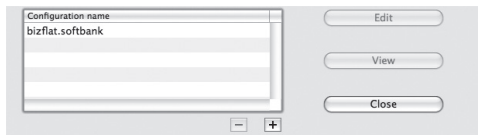
- ① **Communication Record**
Open connection record.
- ② **Home**
Return to Main Screen.
- ③ **Signal Strength Indicator**
See P.3-2 for the description of Signal Strength Icons
- ④ **Connection Time**
Changing Mac clock during connections affects accuracy.
- ⑤ **Transferred Data Meter**
- ⑥ **Network Connection Status**
- ⑦ **Help**
Open User Guide PDF file (Japanese)
- ⑧ **Connection Indicators**
USIM Card connection status
- ⑨ **Connect/Disconnect**
- ⑩ **Access Point**
Show dial-up connection.

Packet Communication Settings

Dial-up profile must be set up for packet communications.

Creating New Profile

- 1 In Main Screen, from "Default Configuration" pull down menu, select "Edit Configuration"
- 2 Click **+** to add new profile



- 3 Select added profile and click "Edit"
- 4 Set Config name, Address, User name and Password
 - As required, settings for DNS, PDP Server, are available.
- 5 Click "OK" to save all dial-up connecting destinations settings, and close dialog box
 - Click "Cancel" to close Connection dialog box.
- 6 Click "Close" to return to Main Screen

Editing Profile

- 1 Select profile to edit from "Configuration name" list
- 2 Click "Edit" to change set information
- 3 Click "OK" to save reset information
- 4 Click "Close" to return to Main Screen

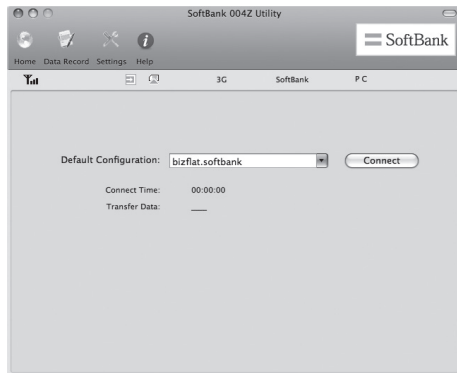
Deleting Profile

- 1 Select profile to delete from "Configuration name" list
- 2 Click **-** to open confirmation dialog box
- 3 Click "OK" to delete selected profile
 - Click "Cancel" to keep selected profile.
- 4 Click "Close" to return to Main Screen

Connecting/Disconnecting

Starting

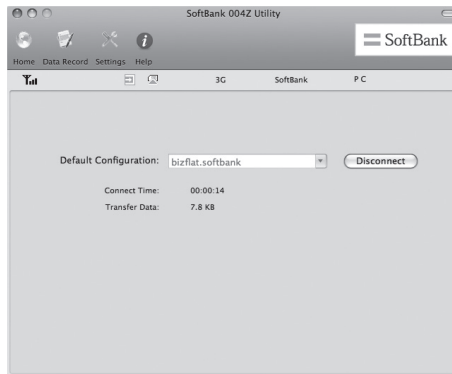
- 1 Click "Connect" to initiate connection



During connections, confirm connection time, transmitted, and received data size of the current connection here.

Disconnecting

- 1 Click "Disconnect" to end connection

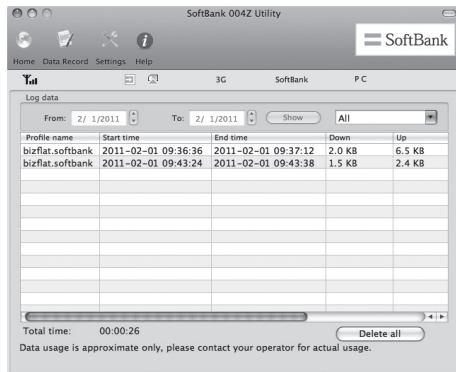


Connection Record



- Changing Mac clock during connections affects record accuracy.

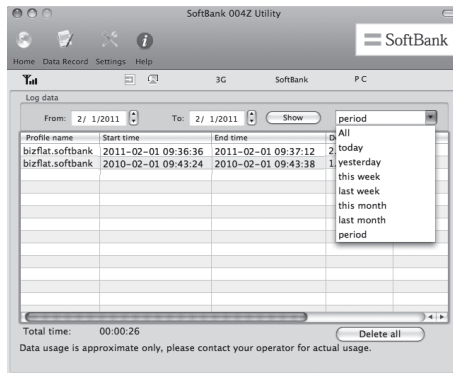
Communication Record

- 1 Click "Data Record" for data record



Checking Communication Summary

- 1 Click  to set "Period"
- If "Period" is selected, statistical period is selectable in "From"/"To" field. Click  to adjust time and date. Click "Show" for data statistics.

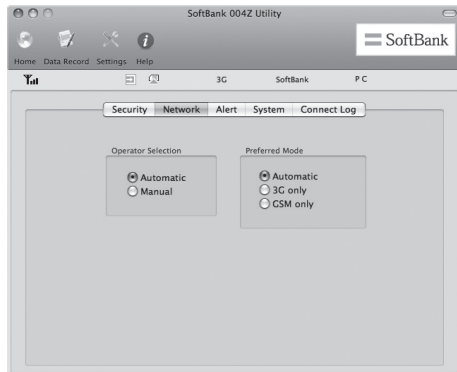


- This is only a guide. Actual transmissions may differ.

Confirming Settings

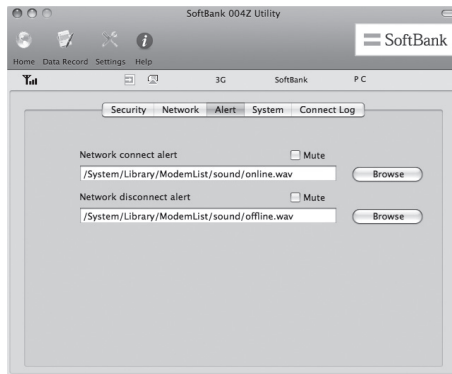
Preferred Network

- 1 In Main Screen, click "Settings"
- 2 Click "Network" to set Operator Selection to "Automatic" or "Manual"
 - If Operator Selection is set to "Automatic," modem searches for preferred network automatically. Preferred Network is selectable only if Operator Selection is set to "Automatic."



Alert

- 1 In Main Screen, click "Settings"
- 2 Click "Alert" to select "Network connect alert" or "Network disconnect alert"
 - Click "Browse" to select files on Mac.
 - If "Mute" is checked, sound cannot be set.



Security Code

PIN

Personal Identification Number (PIN) is USIM Card security code. Change PIN, or activate/cancel PIN Authentication to control USIM Card access.

Default: PIN Authentication is off/PIN is "9999"

PIN Authentication

Activate or cancel PIN Authentication. When active, PIN entry is required for modem use.

- In Main Screen, click "Settings" → "Security" → Check/Uncheck Box for PIN entry window.

Please input PIN:

PIN:

You only have 3 time(s) left!!!

Changing PIN

- 1 Click "Settings" → "Security" → "Revise PIN" (checked)
- 2 If Change PIN window appears, enter current PIN and new PIN
- 3 Enter new PIN again

4 Click "OK" to complete change

Please input:

Old PIN:

New PIN:

Repeat New PIN:

You only have 3 time(s) left!!!

- Set four-to eight-digit number as PIN.
Default: 9999

Entering PIN

If PIN Authentication is active, PIN entry is required for modem use

- 1 Insert modem USB plug into Mac USB port, and activate SoftBank 004Z Utility for PIN entry window
- 2 Enter PIN correctly
- 3 Click "OK" for authentication

Please input PIN:

PIN:

You only have 3 time(s) left!!!

Unlocking PIN

- 1 If USIM Card is locked, PUK Code entry window appears
- 2 Enter PUK Code correctly
- 3 Set new PIN
- 4 Enter new PIN again
- 5 Click "OK" to complete change

Please input:

PUK: [.....]

New PIN: [....]

Repeat New PIN: [....]

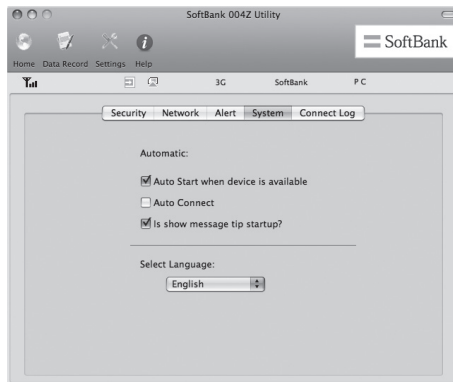
You only have 10 time(s) left!!!

Cancel OK

- Incorrectly entering PIN three consecutive times activates PIN Lock. PUK Code is required to unlock it. Entering PUK Code ten consecutive times locks modem completely. If modem is completely locked, predefined procedures are required. Contact SoftBank Mobile Customer Center, General Information (P.7-3).

System Settings

- 1 In Main Screen, click "Settings"
- 2 Click "System" to set "Automatic" and "Select Language"
 - In "Automatic" field, check item to set.
 - In "Select Language" field, select "日本語" or "English."



Connection Log Setting

- 1 In Main Screen, click "Settings"
- 2 Click "Connect Log" to set "Set price" / "Set connect unit"
 - If "Set Connect unit" is checked, "Byte" / "Packet" is selectable.
- 3 Click "Apply" to save setting