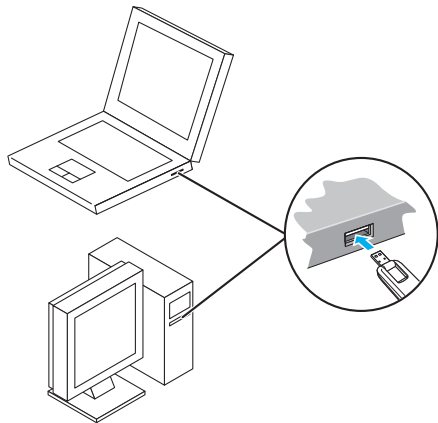


<b>Setup (Windows PC)</b> .....	<b>2-2</b>
Device Recognition (Windows PC) .....	2-2
Software Installation (Windows PC) .....	2-2
Device Removal (Windows PC) .....	2-9

## Device Recognition (Windows PC)

With USIM Card installed, insert modem USB plug into PC USB port. PC should automatically recognize modem within approximately 45 seconds.



System message appears upon modem recognition. See "Software Installation (Windows PC)" to install SoftBank 004Z Utility.

- Modem may fail if PC enters sleep mode, etc. with it connected. Remove modem before leaving a PC unattended, etc. Modem may malfunction if connected before PC starts/restarts. Remove modem before starting or restarting PC.

## Software Installation (Windows PC)

Use this modem to access Network or adjust settings. All screenshots and procedures based on Windows 7.

### Installing SoftBank 004Z Utility

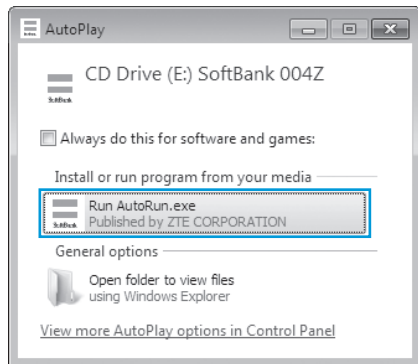
- Do not remove modem during installation. May cause installation failure, system malfunction or other system errors.
- Login using administrator privilege.

- 1** Power on PC and initiate Windows
- 2** Insert modem into PC
- 3** Utility installer and device driver are stored on modem. Modem installs as USB mass-storage device at first use. (Device recognition takes approximately 45 seconds.) Utility installer starts, device driver and utility software install automatically

- If an older version of SoftBank 004Z Utility is already installed a message appears. Remove old version before installation (See "Uninstalling SoftBank 004Z Utility" on P.2-8.).

**4 "AutoPlay" dialog box appears. Click "Run AutoRun.exe"**

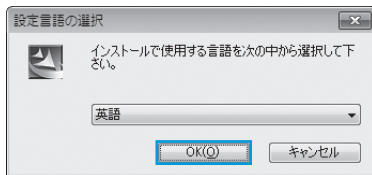
For Windows XP, "AutoPlay" does not appear.

**5 "User Account Control" dialog box appears. Click "Yes"**

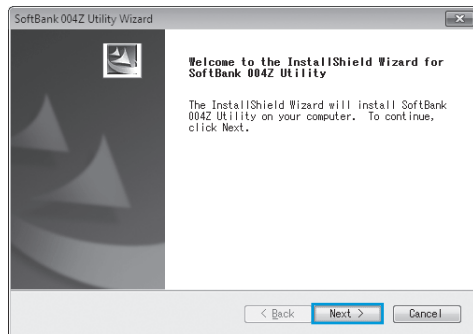
For Windows Vista, click "Continue."

**6 Installer starts automatically**

"設定言語の選択" (Language Setting) dialog box appears. Select "英語" (English) and click "OK."

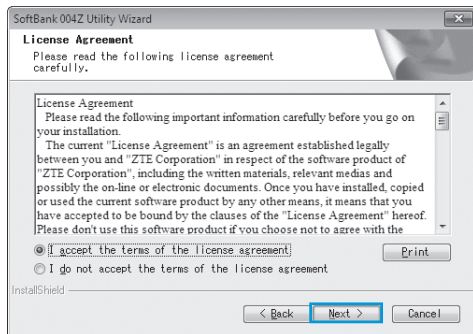


- PC recognizes modem in about 45 seconds upon connection.
- For manual installation, see P.2-5, P.2-6, and P.2-7.

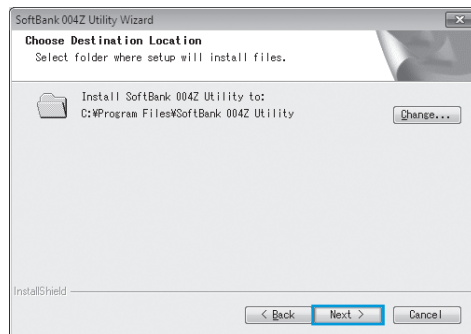
**7 "Welcome to the InstallShield Wizard for SoftBank 004Z Utility" dialog box appears. Click "Next"**

**8 "License Agreement" appears**

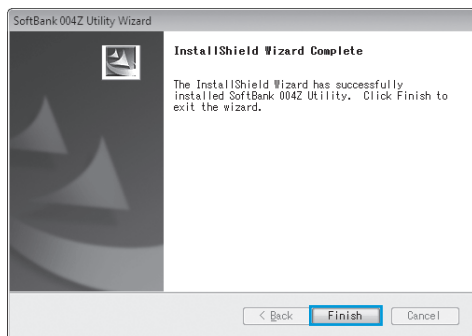
If agreed, click "I accept the terms of the license agreement" and click "Next."

**9 "Choose Destination Location" dialog box appears**

Specify a folder and click "Next."



**10** When dialog box below appears, click "Finish"



**11** SoftBank 004Z Utility shortcut icon appears on desktop

- Restart PC if it does not function correctly.

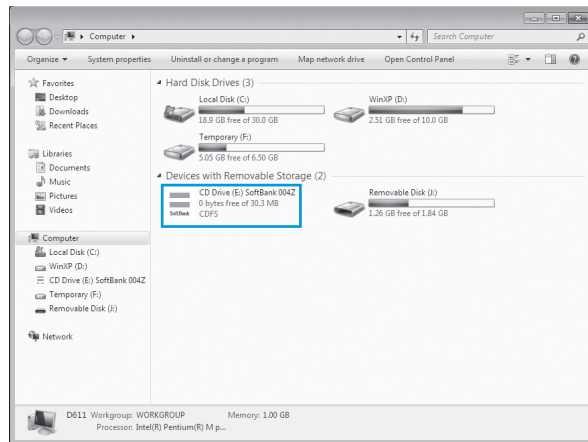
## Manual Installation\* (Windows 7)

If installer fails to start automatically, follow these steps:

\*Always power on PC before inserting modem USB plug.

**1** In Start Menu, click "Computer"

**2** Double click "SoftBank 004Z"

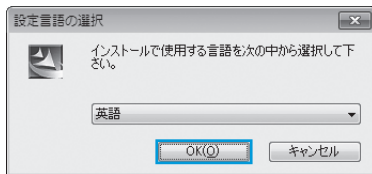


**3** "User Account Control" dialog box appears. Click "Yes"

2

Setup (Windows PC)

#### 4 Select language and click "OK"



#### 5 "Welcome to the InstallShield Wizard for SoftBank 004Z Utility" dialog box appears. Skip to Step 7 on P.2-3

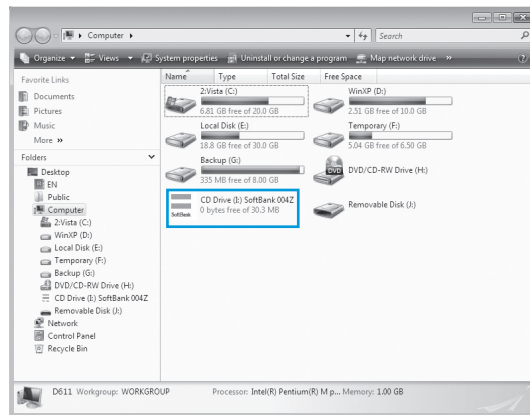
### Manual Installation\* (Windows Vista)

If installer fails to start automatically, follow these steps:

\*Always power on PC before inserting modem USB plug.

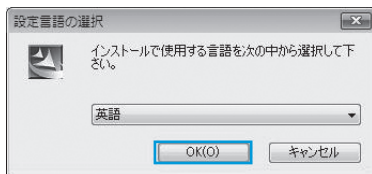
#### 1 In Start Menu, click "Computer"

#### 2 Double click "SoftBank 004Z"



#### 3 "User Account Control" dialog box appears. Click "Continue"

#### 4 Select language and click "OK"



#### 5 "Welcome to the InstallShield Wizard for SoftBank 004Z Utility" dialog box appears. Skip to Step 7 on P.2-3

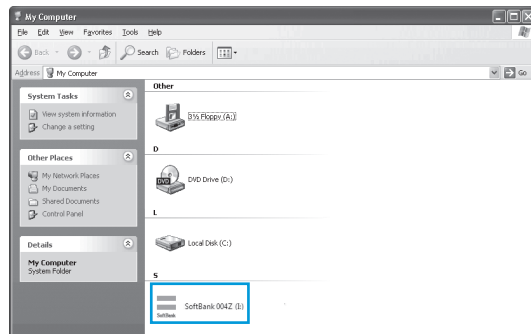
### Manual Installation\* (Windows XP)

If installer fails to start automatically, follow these steps:

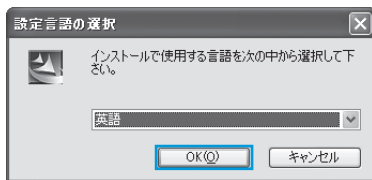
\*Always power on PC before inserting modem USB plug.

#### 1 In Start Menu, click "Computer"

#### 2 Double click "SoftBank 004Z"



- 3** Select language and click "OK"

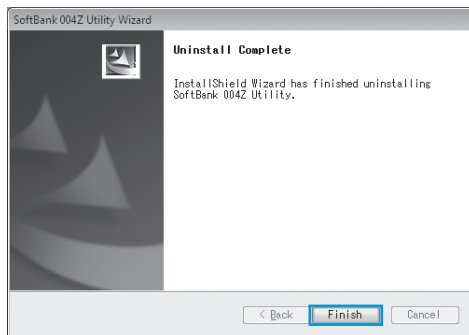


- 4** "Welcome to the InstallShield Wizard for SoftBank 004Z Utility" dialog box appears. Skip to Step 7 on P.2-3

## Uninstalling SoftBank 004Z Utility

- 1** Select "Start" → "All Programs" → "SoftBank 004 Utility" → "Uninstall"
- 2** "User Account Control" appears. Click "Yes"  
For Windows Vista, click "Continue."
- 3** "Do you want to completely remove the selected application and all of its features?" confirmation appears. Click "Yes"
- 4** "Please remove USB MODEM from PC, before uninstalling!" confirmation appears. Click "Yes" to start installation

- 5** Upon uninstallation, dialog box below appears. Click "Finish" to end uninstallation




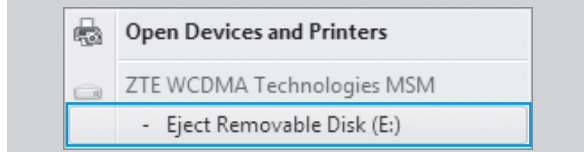


## Device Removal (Windows PC)

- Close SoftBank 004Z Utility before removing modem. Do not remove modem during transmissions.

For Windows 7, exit Utility before removing modem.

- With SD Card installed, in Task Tray, click  then click "Eject Removable Disk." Once modem can be removed safely, remove it.

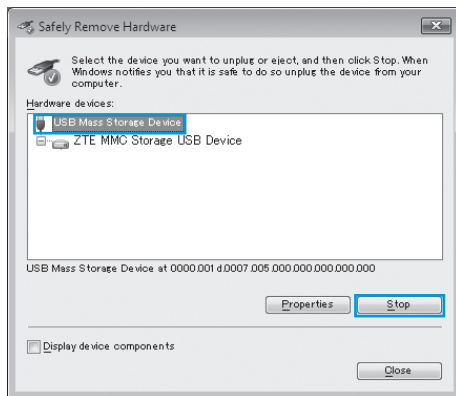


For Windows Vista/Windows XP, click "Removable Disk" before removing modem.

### 1 Double click on Task Tray

For Windows XP, double click  in Task Tray.

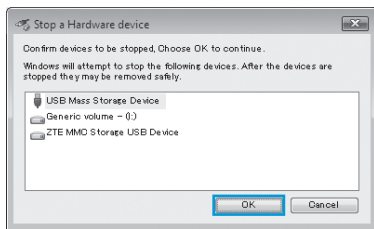
### 2 "Safely Remove Hardware" appears. Select "USB Mass Storage Device" and click "Stop"



2

Setup (Windows PC)

- 3** "Stop a Hardware device" appears. If modem can be safely removed from PC, click "OK"

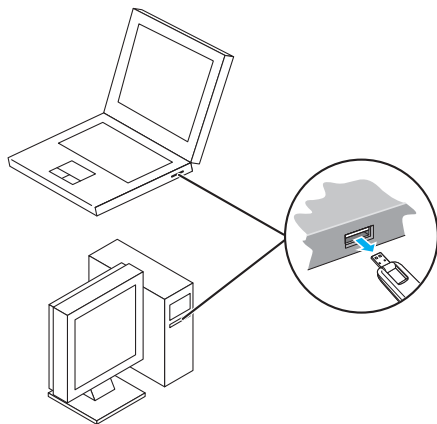


- For Windows XP, "USB Mass Storage Device" appears.

- 4** Return to "Safely Remove Hardware" dialog box. Repeat steps for "USB Mass Storage Device"

- For Windows XP, "USB Mass Storage Device" appears.

- 5** Once modem can be removed safely, remove modem



- After executing "Stop Hardware Device," LED Status Lamp may light or flash. This is normal. Remove modem from PC.