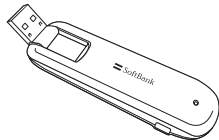


Getting Started	1-2
Package Contents.....	1-2
Parts & Functions.....	1-2
USIM Card	1-3
SD Card	1-4

Package Contents

The following items are included in the package.
Please confirm package contents before use.
Contact SoftBank Mobile Customer Center, General
Information (P.7-3) for missing items.

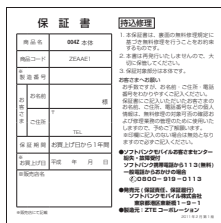
- 004Z



- Documentation



Quick Start Guide (Japanese)

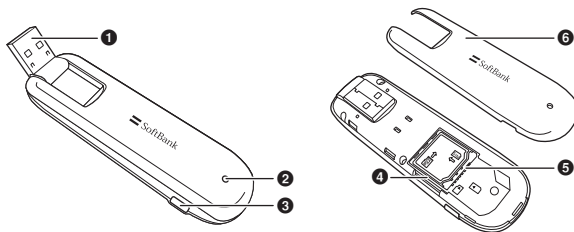


Warranty

- SoftBank 004Z is referred to as "modem" in this guide.
- This modem accepts microSD™/microSDHC™ Memory Card (sold separately). Purchase one to use SD Card functions.
- Keep Warranty in a safe place.

Parts & Functions

Part Names & Functions



- ① USB Plug: Insert into PC USB port.
- ② LED Status Lamp: Lights during transmissions.
- ③ External Antenna Port: Attach External Antenna* here.
- ④ SD Card Slot: Insert SD Card here.
- ⑤ USIM Card Tray: To insert USIM Card.
- ⑥ Cover: Remove to access USIM/SD Card Slot.

*SoftBank Mobile does not offer nor support External Antenna.

LED Status Lamp

LED lamp shows communication status.

LED Status Lamp	Network Connection Status
Lights Red	Network not connected
Lights Green	2GB Network connecting
Flashes Green	2GB Network connected (data received)
Lights Blue	3GB Network connecting
Flashes Blue	3GB Network connected (data received)

USIM Card

USIM Card is the property of SoftBank Mobile. The IC chip contains customer information including phone number. USIM Card must be installed for use. For details, see USIM Card guide (Japanese). Do not remove USIM Card while in use; may damage card/device. If USIM Card comes loose, follow steps below:

- 1 Close SoftBank 004Z Utility
- 2 Remove modem from PC
- 3 Insert USIM Card
- 4 Reinsert modem into PC

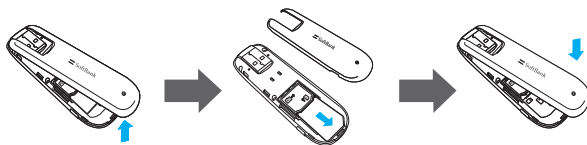
USIM Card Installation

- 1 Remove Cover
- 2 Insert USIM Card into USIM Card Tray with IC chip down
- 3 Confirm USIM Card installation and replace Cover



Removing USIM Card

- 1 Remove Cover
- 2 Remove USIM Card
- 3 Replace Cover



- Do not apply excessive force when inserting/removing USIM Card; may cause injury or damage card/modem.
- Do not misplace removed USIM Card. Keep it away from infants to avoid injury (swallowing hazard)/damage.
- If USIM Card IC chip is dusty, clean with a soft cloth.

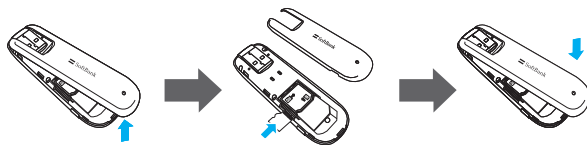
SD Card

004Z accepts SD Card (microSD or microSDHC) up to 32GB. SoftBank Mobile does not guarantee compatibility with any specific software. Install SD Card to use SD Card functions. Do not remove SD Card while in use; may cause data loss/malfunction. If SD Card comes loose, follow these steps:

- 1 Close SoftBank 004Z Utility
- 2 Remove modem from PC
- 3 Insert SD Card into modem
- 4 Reinsert modem into PC

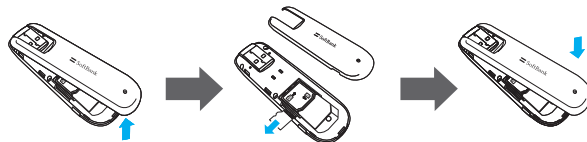
SD Card Installation

- 1 Remove Cover
- 2 Insert SD Card with contacts up
- 3 Replace Cover



Removing SD Card

- 1 Remove Cover
- 2 Push SD Card lightly until it clicks; when it pops out, remove it
- 3 Replace Cover



- Do not insert USIM Card or SD Card with excessive force. May cause damage. Do not misplace a removed SD Card.