

Safety Precautions







Read safety precautions before using handset.

- Observe precautions to avoid injury to self or others, or damage to property.
- SoftBank Mobile is not liable for any damages resulting from use of this product.

These labels indicate the degree of risk from improper use. Make sure you thoroughly understand their meanings before reading on.

 DANGER	Great risk of death or serious injury from improper use
 WARNING	Risk of death or serious injury from improper use
 CAUTION	Risk of minor injury or damage to property from improper use

These symbols indicate prohibited or compulsory actions. Make sure you thoroughly understand their meanings before reading on.

 Prohibited	Prohibited actions
 Do Not Disassemble	Disassembly prohibited
 Avoid Liquids Or Moisture	Exposure to liquids prohibited
 Do Not Use Wet Hands	Use with wet hands prohibited
 Compulsory	Compulsory actions
 Disconnect Power Source	Unplug Charger from outlet

Handset, Battery, USIM Card, Desktop Holder, Charger (Sold Separately) & Memory Card (Sold Separately)



DANGER

Use specified battery, Desktop Holder and Charger only.

Non-specified equipment use may cause battery to leak, overheat, burst or ignite, and may cause Charger to overheat, ignite, malfunction, etc.



Compulsory

Do not disassemble, modify or solder handset or related hardware.

May cause fire, injury, electric shock or malfunction. Battery may leak, overheat, burst or ignite.

Modifying handsets is prohibited by the Radio Law and subject to a penalty.



Do Not Disassemble

Do not expose internal handset parts, battery, Desktop Holder or Charger to liquids.

Do not let liquid-exposed internal parts remain wet; do not charge wet battery. May cause overheating, electric shock, fire, injury or malfunction. Use handset/related hardware properly/appropriately.



Avoid Liquids Or Moisture

Do not charge battery in or expose handset or related hardware to extreme heat (e.g., near fire or sources of heat, in direct sunlight, inside vehicles, etc.).

May cause warping/malfunction; battery may leak, overheat, ignite or burst. Handset or related hardware may become hot to the touch, leading to burn injuries, etc.



Prohibited

Do not force battery/Charger into handset. Confirm terminal/connector orientation and retry.

Battery may leak, overheat, burst, ignite, etc.



Prohibited



WARNING

Do not place handset, battery, Desktop Holder or Charger in/on ovens, microwave ovens, pressure cookers, induction stoves or other cooking appliances.

Battery may leak, overheat, burst or ignite. Handset, Desktop Holder or Charger may overheat, emit smoke, ignite, malfunction, etc.



Prohibited

Keep handset off and Charger disconnected near gas stations or places with fire/explosion risk.

Handset use near petrochemicals or other flammables may cause fire/explosion; power off before using Osaifu-Keitai® at gas stations (cancel IC Card Lock beforehand).



Compulsory

Do not apply strong shocks or impacts.

Do not drop/throw handset or related hardware. Battery may leak, overheat, burst or ignite, resulting in fire, electric shock, malfunction, etc.



Prohibited

If there is unusual sound/odor, smoke or any other abnormality:

Continued use may cause fire, electric shock, etc.; grasp plug to disconnect Charger, power off, then remove battery, being careful not to burn or injure yourself.



Compulsory

Keep liquids (water, pet urine, etc.) or conductive material (pencil lead, metallic strip, metal jewelry, etc.) away from charging terminals or External Connector Port.

May cause short circuit, resulting in fire, malfunction, etc.



Prohibited

Do not charge battery while handset is wet.

May cause electric shock or short circuit, resulting in fire, malfunction, etc.



Prohibited

Do not expose handset or related hardware to hot air from dryers, etc. to dry them or for any other purpose. Avoid saunas or hot water.

Battery may leak, overheat, burst or ignite. Handset, Desktop Holder or Charger may overheat, emit smoke, ignite, malfunction, etc.



Prohibited

CAUTION

Do not place handset or related hardware on unstable surfaces.

Handset or related hardware may fall, resulting in injury, malfunction, etc.; take added care when Vibration is set or while charging.



Prohibited

Keep handset and related hardware out of infants' reach.

Infants may choke from swallowing handset or related hardware or be injured, etc.



Compulsory

If your child is using handset/related hardware, explain all instructions and supervise usage.

Misuse may cause injury, etc.



Compulsory

Battery

DANGER

Read battery label to confirm battery type; use/dispose of battery accordingly.

Symbol on Label	Battery Type
Li-ion00	Lithium-ion

Do not dispose of battery in fire.

Battery may leak, burst, ignite, etc.



Prohibited

Do not damage battery (with a nail, hammer, foot, etc.) or subject it to strong impacts or shocks.

Battery may leak, overheat, burst, ignite, etc.



Prohibited

Keep wire or other metal objects away from battery terminals. Do not carry/store battery with conductive material (pencil lead, metallic strip, metal jewelry, etc.).

Battery may leak, overheat, burst, ignite, etc.



Prohibited

If battery fluid gets in eyes, do not rub; rinse with water and consult a doctor immediately.

Eyes may be severely damaged.



Compulsory

WARNING

If battery fluid contacts skin or clothes, discontinue handset use and rinse with clean water immediately.
May cause skin damage.



Compulsory

If battery does not charge properly, stop trying.

Battery may leak, overheat, burst, ignite, etc.



Compulsory

If there is abnormal odor, excessive heat, discoloration or distortion, remove battery, being careful not to burn or injure yourself. Avoid fire sources.

Continued use may cause battery to leak, overheat, burst, ignite, etc.



Compulsory

Keep battery away from pets.

Pet bites may cause battery to leak, burst, overheat, ignite, etc.



Compulsory

CAUTION

Do not dispose of an exhausted battery with ordinary refuse.

Tape over battery terminals before disposal. Take battery to a SoftBank Shop, or follow the local disposal regulations.



Prohibited

Handset



WARNING

Do not shine Mobile Light in eyes.

May temporarily affect eyesight or startle, leading to accidents.

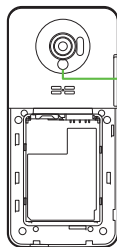
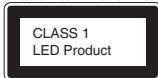


Prohibited

CAUTION:

Use of controls, adjustments or performance of procedure other than those specified herein may result in hazardous radiation exposure. As the emission level from Mobile Light LED used in this product is harmful to the eyes, do not attempt to disassemble the cabinet. Service is limited to authorized service centers only.

EN60825-1:1994 A1:2002 & A2:2001



Mobile Light

■ Mobile Light LED Properties

- Emission Duration: Continuous
- Wavelength
White: 400 - 700 nm
- Maximum Emission Output
White: 160 μ W (1.2 mW inside handset)

Do not use handset while driving or cycling.

Accidents may result. Phone use while driving or cycling is prohibited by law and subject to a penalty; park legally beforehand.



Prohibited

Power off near electronic devices that employ high precision control systems or weak signals.

May cause electronic malfunctions, etc. Take added care near these devices: Hearing aids, implanted pacemakers/defibrillators and other electronic medical equipment; fire alarms, automatic doors and other automatic control devices.



Compulsory

Power off before boarding aircraft to avoid possible radio wave interference with aircraft operations.

If mobile phone use is allowed on board, follow airline or cabin crew instructions regarding handset use.



Compulsory

Users with a heart condition should adjust ringtone Vibration and Volume as needed.

May cause heart damage.



Compulsory

If thunder is heard while outdoors, power off; find cover.

There is a risk of lightning strike or electric shock.



Compulsory

Do not look into Infrared Port during infrared transmissions.

Eyesight may be affected.



Prohibited



CAUTION

Do not use handset when it may affect a vehicle's electronic equipment.

Handset use inside vehicles may cause electronic equipment to malfunction, resulting in accidents.



Prohibited

If you experience any skin irritation associated with handset use, discontinue handset use and consult a doctor.

Metal and other materials may cause skin irritation, rashes, or itchiness depending on your physical condition.



Compulsory

Keep handset away from magnetic cards, etc.

Data on bank cards, credit cards, telephone cards, floppy disks, etc. may be lost.



Prohibited

Be sure there is ample space for Motion Control use; hold handset firmly and shake it gently.

Handset may slip, resulting in injury or breakage.



Prohibited

Do not swing handset by strap.
May harm self or others; strap may break, resulting in injury or handset malfunction/breakage.



Prohibited

Handset may become hot while in use, especially at high temperature.
Prolonged contact with skin may cause burn injuries.



Compulsory

Always maintain some distance from Speaker while ringtones, music or other handset sounds play.
Excessive volume may damage ears or hearing.



Prohibited

Keep fingers, straps, etc. outside when opening/closing handset.
May cause injury, breakage, etc.



Compulsory

Watch TV from a distance in good light.
Watching in poor light or too close may affect eyesight.



Compulsory

Moderate handset volume when using Headphones.
Excessive volume may damage ears or hearing.



Compulsory

Desktop Holder (Included) & Charger (Sold Separately)

WARNING

Do not cover/wrap Charger/Desktop Holder while charging.

Charger/Desktop Holder may overheat, resulting in fire, malfunction, etc.



Prohibited

Use only the specified voltage.

Non-specified voltages may cause fire, malfunction, etc.

- AC Charger: AC 100V-240V Input
 - In-Car Charger (use in negative earth vehicles only): DC 12V/24V Input
- Do not use power adapters. Using Charger with step-up/step-down transformer may cause fire, electric shock or malfunction.



Prohibited

Leave Charger unplugged during periods of disuse; grasp plug to disconnect it.

May cause electric shock, fire or malfunction.



Disconnect
Power Source

Use only the specified fuse for In-Car Charger.

Non-specified fuse may cause fire or malfunction. See In-Car Charger manual for details.



Compulsory

If liquids (water, pet urine, etc.) seep inside Charger, grasp plug and disconnect it immediately.
May cause electric shock, smoke or fire.



Disconnect
Power Source

If plug is dusty, grasp it and disconnect Charger, then clean with dry cloth.
Fire may result.



Compulsory

Do not use In-Car Charger in positive earth vehicles.
May cause fire, etc. Use in negative earth vehicles only.



Prohibited

Plug Charger firmly into the outlet, keeping the plug and Charger/Desktop Holder charging terminals away from conductive material (pencil lead, metallic strip, metal jewelry, etc.).
May cause electric shock, short circuit, fire, etc.



Compulsory

Do not touch Charger plug with wet hands.
May cause electric shock, malfunction, etc.



Do Not Use
Wet Hands

Do not touch Charger if thunder is heard.
May cause electric shock, etc.



Prohibited

Do not use Desktop Holder inside vehicles.

Extreme temperature or vibration may cause fire or damage handset, etc.



Prohibited

Do not expose Desktop Holder or Charger to liquids/high humidity (e.g., precipitation, bath/shower rooms, restrooms, etc.).

May cause fire, electric shock or malfunction.



Prohibited



CAUTION

Grasp plug and disconnect Charger before cleaning.

May cause electric shock, etc.



Disconnect
Power Source

Always grasp plug (not cord) to disconnect Charger.

Pulling the plug by cord may damage cord, causing electric shock, fire, etc.



Compulsory

Do not subject AC Charger to strong shocks or impacts while it is plugged into the outlet.

May cause malfunction or injury.



Prohibited

Do not touch charging terminals of Desktop Holder while it is connected to the outlet.

May cause burn injuries.



Prohibited

Handset Use & Electronic Medical Equipment

This section is based on "**Guidelines on the Use of Radio Communications Equipment such as Cellular Telephones and Safeguards for Electronic Medical Equipment**"

(Electromagnetic Compatibility Conference, April 1997) and "**Report of Investigation of the Effects of Radio Waves on Medical Equipment, etc.**" (Association of Radio Industries and Businesses, March 2001).



WARNING

Persons with implanted pacemaker/defibrillator should keep handset more than 22 cm away.

Radio waves may interfere with implanted pacemakers or defibrillators.



Compulsory

If you intend to use electronic medical equipment other than implanted pacemaker/defibrillator outside medical facilities, consult the vendor on radio wave effects.

Radio waves may interfere with electronic medical equipment.



Compulsory

Observe these rules inside medical facilities to avoid effects of radio waves on electronic medical equipment:

- Do not enter an operating room or an Intensive or Coronary Care Unit while carrying a handset.
- Keep handset off in hospitals.
- Even in lobbies or other places where handset use is permitted, keep handset off near electronic medical equipment.
- Obey medical facility rules on mobile phone use.



Compulsory

Power off in crowds or trains where persons with implanted pacemaker/defibrillator may be near.

Radio waves may interfere with implanted pacemakers or defibrillators causing such devices to malfunction.



Compulsory

General Notes

General Use

- SoftBank Mobile is not liable for any damages resulting from accidental loss/alteration of handset/Memory Card files or settings. Keep separate copies of Phone Book entries, etc.
- Handset transmissions/TV signal reception may be disrupted inside buildings, tunnels or underground, or when moving into/out of such places.
- Use handset without disturbing others.
- Handsets are radios as stipulated by the Radio Law. Under the Radio Law, handsets must be submitted for inspection upon request.
- Handset use near landlines, TVs or radios may cause interference.
- For proper use of Memory Card (sold separately), read the manual beforehand.
- **Beware of eavesdropping.**
Because this service is completely digital, the possibility of signal interception is greatly reduced. However, some transmissions may be overheard.
- **Eavesdropping**
Deliberate/accidental interception of communications constitutes eavesdropping.
- Beware of harmful/malicious websites. Take added care when posting personal information, etc.

- An export license may be required to carry the handset into other countries if it is to be used by or transferred to another person. However, no such license is required when you take the handset abroad for personal use on a vacation or business trip and then bring it back.
Export control regulations in the United States provide that an export license granted by the US government is required to carry the handset into Cuba, Iran, North Korea, Sudan or Syria.

Handset & Hardware Care

- If handset is left with no battery or an exhausted one, data may be altered/lost. SoftBank Mobile is not liable for any resulting damages.
- Use handset within 5°C - 35°C (up to 40°C for brief periods in bath/shower rooms, etc.) and 35% - 90% humidity.
- Avoid extreme temperatures or direct sunlight.
- Handset/battery may warm during operation or while charging. This is normal.
- Malfunction resulting from misuse is not covered by the warranty.
- Exposing lens to direct sunlight may damage color filter and affect image color.
- Battery may not charge properly if ports/terminals are obstructed by dust, etc. Clean with dry cloth, cotton swab, etc.
- Clean handset with soft dry cloth. Using alcohol, thinner, etc. may damage it.
- Avoid scratching Display.

- Avoid heavy objects or excessive pressure. May cause malfunction or injury.
 - Do not sit on handset in back pants pocket.
 - Do not place heavy objects on handset inside handbags, packs, etc.
- Connect only specified products to External Connector Port. Other devices may malfunction or cause damage.
- Always power off before removing battery. If battery is removed while saving data or sending mail, data may be lost, changed or destroyed.
- Do not power off while using Memory Card; may result in data loss or malfunction.
- When walking outside, moderate handset volume to avoid accidents.
- Avoid covering Speaker while using handset.

Bluetooth® Function

SoftBank Mobile is not liable for any damages resulting from data/information leakage due to use of handset Bluetooth® function.

■ Precautions

The frequency band utilized by handset Bluetooth® function is shared with industrial, scientific or medical equipment, including household microwave ovens, etc., and used by radio stations, amateur radio stations, etc. (hereafter "other radio stations").

- 1 Before using Bluetooth®, visually confirm that no other radio stations sharing the same frequency band are in use nearby.
- 2 Should interference occur between handset and other radio stations, move or cancel Bluetooth® function immediately.
- 3 For additional information and support, contact **SoftBank Mobile Customer Center, General Information:** From a SoftBank handset, call toll free at 157. To call toll free from a landline/IP phone, see **P.9-1** "Customer Service."

Frequency Band

This radio station utilizes 2.4 GHz band with FHSS modulation. Maximum transmission radius is 10 meters (32 feet). It is not possible for the radio station to avoid using the frequency band of the mobile unit identification apparatus.



Wi-Fi (Wireless LAN)

Wireless LAN (hereafter "Wi-Fi") uses radio waves to enable communication between compatible devices, thus allowing connection to a local area network from anywhere within the range. However, there is a risk of data interception unless security is established. It is advisable for the user to configure security settings on their own responsibility before using Wi-Fi.

- Do not use Wi-Fi near electrical appliances, audiovisual equipment or office automation equipment; may affect Wi-Fi transmission speed, availability, clarity, etc. (There is a possibility of interference especially when a microwave oven is in use.)
- The target access point may not be detected correctly if there are multiple access points nearby.

■ Precautions

The frequency band utilized by handset Wi-Fi is shared with industrial, scientific or medical equipment, including household microwave ovens, etc., and used by radio stations, amateur radio stations, etc. (hereafter "other radio stations").

- 1 Before using Wi-Fi, visually confirm that no other radio stations sharing the same frequency band are in use nearby.
- 2 Should interference occur between handset and other radio stations, move or disable Wi-Fi immediately.

- 3 For additional information and support, contact **SoftBank Mobile Customer Center, General Information:** From a SoftBank handset, call toll free at 157. To call toll free from a landline/IP phone, see **P.9-1** "Customer Service."

Frequency Band

This radio station utilizes 2.4 GHz band with DSSS-OFDM modulation. Maximum transmission radius is 40 meters (131 feet).



■ Simultaneous Use with Bluetooth®

Both Wi-Fi (IEEE 802.11b/g) and Bluetooth® use the 2.4 GHz band. Therefore, Wi-Fi transmission speed, availability and clarity may be affected when Bluetooth® device is used near handset or when handset Bluetooth® is active. Should interference occur, discontinue use of the Bluetooth® device or cancel handset Bluetooth®.

- This handset supports Wi-Fi channels 1 - 13. Handset will not connect to access points set to other channels.
- Available channels vary by country.
- For use of Wi-Fi aboard aircraft, check with airline beforehand.
- In some countries/regions, such as France, there are restrictions on the use of Wi-Fi. If you intend to use Wi-Fi on the handset abroad, check the local laws and regulations beforehand.

Function Usage Limits

These functions are disabled after handset upgrade/replacement or service cancellation: Camera; Media Player; S! Applications; TV. After a period of disuse, these functions may be unusable; retrieve Network Information to restore usability.

Mobile Camera

- Mind your manners when using handset camera.
- Test the camera before capturing/recording special moments.
- Do not use handset camera in places where photography or videography is prohibited.
- Captured images may not be used/transferred without copyright holder (photographer, etc.) permission, except for personal use.

In-Call/Transmission Caution

During calls/transmissions, calling/transmission charges/fees apply even if other functions or operations are simultaneously in use.

Portrait Rights

Portrait rights protect individuals' right to refuse to be photographed or to refuse unauthorized publication/use of their photographs. Portrait rights consist of the right to privacy, which is applicable to all persons, and the right to publicity, which protects the interests of celebrities. Therefore, photographing others including celebrities and publicizing/distributing their photographs without permission is illegal; use handset camera responsibly.

Copyrights

Copyright laws protect sounds, images, computer programs, databases, other materials and copyright holders. Duplicated material is limited to private use only. Use of materials beyond this limit or without copyright holder permission may constitute copyright infringement, and be subject to criminal punishment. Comply with copyright laws when using images captured with handset camera.

Electromagnetic Waves

For body-worn operation, this phone has been tested and meets RF exposure guidelines when used with accessories containing no metal, that position handset a minimum of 15 mm from the body. Use of other accessories may not ensure compliance with RF exposure guidelines.

CE Declaration of Conformity

CE 0168

In some countries/regions, such as France, there are restrictions on the use of Wi-Fi. If you intend to use Wi-Fi on the handset abroad, check the local laws and regulations beforehand.

Hereby, Sharp Telecommunications of Europe Ltd, declares that 0045H is in compliance with the essential requirements and other relevant provisions of Directive 1999/5/EC. A copy of the original declaration of conformity for each model can be found at the following Internet address: <http://www.sharp.co.jp/k-tai/>

Battery - CAUTION

Use specified battery or Charger only.

Non-specified equipment use may cause malfunctions, electric shock or fire due to battery leakage, overheating or bursting.

Do not dispose of an exhausted battery with ordinary refuse; always tape over battery terminals before disposal. Take battery to a SoftBank Shop, or follow the local disposal regulations.

Charge battery in ambient temperatures between 5°C and 35°C; outside this range, battery may leak/overheat and performance may deteriorate.

European RF Exposure Information

Your mobile device is a radio transmitter and receiver. It is designed not to exceed the limits for exposure to radio waves recommended by international guidelines. These guidelines were developed by the independent scientific organization ICNIRP and include safety margins designed to assure the protection of all persons, regardless of age and health.

The guidelines use a unit of measurement known as the Specific Absorption Rate, or SAR. The SAR limit for mobile devices is 2 W/kg.

As mobile devices offer a range of functions, they can be used in other positions, such as on the body as described in this user guide*.

Highest SAR value:

Model	At the Ear**	On the Body
004SH	0.402 W/kg	0.665 W/kg

As SAR is measured utilizing the device's highest transmitting power the actual SAR of this device while operating is typically below that indicated above. This is due to automatic changes to the power level of the device to ensure it only uses the minimum level required to reach the Network.

The World Health Organization has stated that present scientific information does not indicate the need for any special precautions for the use of mobile devices. They note that if you want to reduce your exposure then you can do so by limiting the length of calls or using a handsfree device to keep the mobile phone away from the head and body.

*Please see Electromagnetic Waves on **P.10-9** for important notes regarding body-worn operation.

**Measured in accordance with international guidelines for testing.

Headphone Signal Level

The maximum output voltage for the music player function, measured in accordance with EN 50332-2, is 29.0 mV.

FCC Notice

- This device complies with part 15 of the FCC Rules. Operation is subject to the following two conditions:
(1) This device may not cause harmful interference, and (2) this device must accept any interference received, including interference that may cause undesired operation.
- Changes or modifications not expressly approved by the manufacturer responsible for compliance could void the user's authority to operate the equipment.

FCC Information to User

This equipment has been tested and found to comply with the limits of a Class B digital device, pursuant to Part 15 of the FCC Rules. These limits are designed to provide reasonable protection against harmful interference in a residential installation. This equipment generates, uses and can radiate radio frequency energy and, if not installed and used in accordance with the instructions, may cause harmful interference to radio communications.

However, there is no guarantee that interference will not occur in a particular installation; if this equipment does cause harmful interference to radio or television reception, which can be determined by turning the equipment off and on, the user is encouraged to try to correct the interference by one or more of the following measures:

1. Reorient/relocate the receiving antenna.
2. Increase the separation between the equipment and receiver.
3. Connect the equipment into an outlet on a circuit different from that to which the receiver is connected.
4. Consult the dealer or an experienced radio/TV technician for help.

FCC RF Exposure Information

Your handset is a radio transmitter and receiver. It is designed and manufactured not to exceed the emission limits for exposure to radio frequency (RF) energy set by the Federal Communications Commission of the U.S. Government.

The guidelines are based on standards that were developed by independent scientific organizations through periodic and thorough evaluation of scientific studies. The standards include a substantial safety margin designed to assure the safety of all persons, regardless of age and health. The exposure standard for wireless handsets employs a unit of measurement known as the Specific Absorption Rate, or SAR. The SAR limit set by the FCC is 1.6 W/kg.

Highest SAR value:

Model	FCC ID	At the Ear	On the Body
004SH	APYHRO00137	0.364 W/kg	0.742 W/kg

This device was tested for typical body-worn operations with the back of the handset kept 1.5 cm from the body. To maintain compliance with FCC RF exposure requirements, use accessories that maintain a 1.5 cm separation distance between the user's body and the back of the handset. The use of beltclips, holsters and similar accessories should not contain metallic components in its assembly.

The use of accessories that do not satisfy these requirements may not comply with FCC RF exposure requirements, and should be avoided.

The FCC has granted an Equipment Authorization for this model handset with all reported SAR levels evaluated as in compliance with the FCC RF emission guidelines. SAR information on this model handset is on file with the FCC and can be found at <http://www.fcc.gov/oet/fccid> under the Display Grant section after searching on the corresponding FCC ID (see table on the left). Additional information on Specific Absorption Rates (SAR) can be found on the Cellular Telecommunications & Internet Association (CTIA) Website at <http://www.phonefacts.net>.

Specific Absorption Rate (SAR)

004SH meets the government's requirements for exposure to radio waves.

These requirements are based on scientific basis to assure that radio waves emitted from mobile phones and other handheld wireless devices do not affect human health. They require that the Specific Absorption Rate (SAR), which is the unit of measurement for the amount of radiofrequency absorbed by the body, shall not exceed 2 W/kg*.

This limit includes a substantial safety margin designed to assure the safety of all persons, regardless of age or health, and meets the international standard set by International Commission on Non-Ionizing Radiation Protection (ICNIRP) in cooperation with World Health Organization (WHO).

The highest SAR value of 004SH is 0.501 W/kg.

SAR tests were conducted with handset transmitting at its highest certified power level in accordance with testing methods set by the government. While there may be differences between the SAR levels for various handsets, they all meet the governmental requirements for safe exposure. The actual SAR level of the handset while operating can be well below the highest value. This is because the handset is designed to operate at multiple power levels so as to use only the power required to reach the Network.

Additional information on SAR can be obtained on the following Websites.

Ministry of Internal Affairs and Communications
<http://www.tele.soumu.go.jp/e/sys/ele/index.htm>
Association of Radio Industries and Businesses (ARIB)
<http://www.arib-empf.org/> (Japanese)

*Requirements are stipulated in Radio Law
(Ordinance Regulating Radio Equipment, Article 14-2).

Water & Dust Resistance

004SH Water & Dust Resistance

004SH complies with IPX5 (former JIS protection level 5)¹ and IPX7 (former JIS protection level 7)² water protection standards as well as IP5X (JIS protection level 5)³ dust protection standard, with Port Cover and Battery Cover closed firmly.

¹IPX5 compliant means that a handset continues to function as a phone after being subjected to a water jet (approximately 12.5 liters/min.) discharged from a nozzle (inner diameter: 6.3 mm), from all directions (approximately 3 m from handset) for at least 3 minutes.

²IPX7 compliant means that a handset continues to function as a phone after being gently submerged to the depth of 1 m in still tap water at room temperature, left there for approximately 30 minutes, then removed from it.

³IP5X compliant means that a handset continues to function as a phone and its safety is maintained after being agitated in a device containing dust of 75 µm or smaller in diameter for 8 hours, then removed from the device.

● **Water/dust resistance may be affected under some circumstances. Malfunction resulting from misuse is not covered by the warranty.**

● **004SH is compliant with IPX5, IPX7 and IP5X water/dust protection standards. However, ingress of dirt, sand, mud, metal powder, food, beverage, etc. may cause malfunction.**

Important Notes

- Close Battery Cover and Port Cover firmly. Debris (hair, sand, fibers, etc.) trapped between Cover and base may expose handset to liquid/dust.
- If Battery/Port Cover is left open liquid exposure may cause handset malfunction/electric shock. Power off, then remove battery.
- If handset is wet, wipe it with dry cloth.
- Do not open/close Battery/Port Cover with wet hands or while handset is wet.
- Handset is only water resistant against fresh/tap water between 5°C - 35°C.

Precautions

- Do not subject handset to soap, detergent, bath powder/oil, sea/pool/spa water, hot water, etc.
- Rinse off sea/pool water, beverage, dirt, sand, mud, etc. immediately; residue may cause malfunction if allowed to dry.
- Rinse off sand, dirt, etc. completely before use; any residue may damage handset causing malfunction.

- Do not soak handset in bath or pool; never use it in water (including opening/closing of handset and pressing keys).
- Handset is not resistant to water pressure. Avoid high-pressure water/shower (over 6 liters/min.) or water immersion.
- Do not expose handset to extreme humidity for long periods; avoid prolonged use in bath/shower rooms.
- Do not use in saunas. Avoid hot air from dryers, etc.
- Use handset within 5°C - 35°C (up to 40°C for brief periods in bath/shower rooms, etc.) and 35% - 90% humidity.
- Avoid extreme temperatures (e.g., near stoves, inside refrigerators, etc.).
- Volume may be low when Microphone/Earpiece/Speaker is wet; dry handset before use.
- Battery, Desktop Holder and optional accessories are not waterproofed or dustproofed.
- Do not subject handset to strong shocks or impacts; do not poke Microphone, Earpiece, Speaker, etc. with a cotton swab or sharp object; water/dust resistance may be affected.
- Avoid placing handset directly on sand. Sand may penetrate Earpiece, Speaker, etc., resulting in low volume.

Safety Precautions

- Sand, etc. trapped in the hinge may cause excessive friction or noise when opening/closing handset.
- Touch Panel may not respond properly if wet or touched with wet fingers.
- Do not move handset directly from a cold place to a warm humid place; condensation may occur. Should this happen, dry handset naturally at room temperature.
- 004SH does not float on water.
- Keep handset out of heavy rain.
- Do not let liquid-exposed handset remain wet; exposure to cold may freeze liquid causing malfunction.
- Damaged Battery/Port Cover affects water/dust resistance; contact a SoftBank Shop.

Charging Precautions

- Battery, Desktop Holder and optional accessories are not waterproofed or dustproofed. Avoid exposure to liquids/high humidity (e.g., precipitation, bath/shower rooms, restrooms, etc.); may cause fire, electric shock or damage.
- Never charge battery while handset is wet; may cause fire or damage due to electric shock or short-circuit.
- Close Port Cover firmly after charging via External Connector Port. Use Desktop Holder to prevent ingress of water and dust via External Connector Port.
- Do not touch Desktop Holder or Charger with wet hands. Electric shock may occur.
- Do not use Desktop Holder or Charger in rooms in which water is regularly in use (kitchens, bath/shower rooms, etc.); may cause fire or electric shock.

Care & Maintenance

- Proper care of the gaskets around Port Cover and Battery Cover is crucial for continued handset water/dust resistance. Observe the following:
 - Do not remove or damage gaskets. Keep them clean.
 - Do not insert sharp objects through Port/Battery Cover gaps; may damage gasket and affect water/dust resistance.
 - If Port/Battery Cover gasket is damaged or deformed, replace it with a new one. For gasket replacements, contact a SoftBank Shop.
- To maintain water/dust resistance, replace related parts every two years regardless of their condition. Customer-requested parts replacement incurs fees and requires handset submission. For details, contact a SoftBank Shop or SoftBank Mobile Customer Center, General Information (see **P.9-1 "Customer Service"**).

Cleaning Handset

Washing Handset

Wipe off dirt, sand, beverage, etc., gently with cloth. Then with Battery Cover closed, hold handset approximately 10 cm below faucet or shower head and wash with low-pressure tap water (6 liters/min. or lower) at normal temperature (5°C - 35°C). Wash with your hands, taking care not to open Covers; do not use a brush or sponge. Dry handset before use.

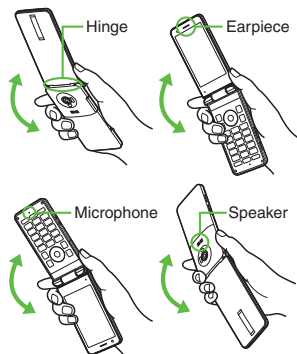
- Before washing handset, make sure that Battery Cover and Port Cover are closed firmly.
- Do not use a washing machine or ultrasonic cleaner.
- Do not place handset in a microwave oven to dry it. Battery/handset may leak, burst, overheat or ignite; may cause malfunction, accident or injury.
- Do not dry handset by exposing it to extreme heat (e.g., hot air from dryers, etc.); may cause warping, discoloration or damage.

Drying Handset

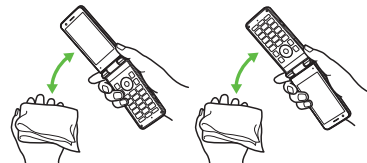
Dry these parts/areas after washing handset:

Hinge	Earpiece
Microphone	Speaker

- 1 Wipe handset surface with dry cloth**
- 2 Holding hinge firmly by its sides, shake handset about 20 times**



- 3 Pat against dry cloth to remove moisture from grooves**



- 4 Leave handset on dry cloth for approximately 2 - 3 hours at room temperature**

Do Not Use Wet Handset

- Voice quality may be affected, or moisture may transfer to clothes, bag, etc.
- Moisture may short-circuit External Connector Port.
- Exposure to cold may freeze moisture causing malfunction.