

SoftBank 301Z

Quick Start Guide

Thank you for purchasing "SoftBank 301Z".

- Before using SoftBank 301Z, read "Quick Start Guide (this guide)," and "User Guide," then properly handle it.
- Verify User Guide at SoftBank Mobile Website from (<http://www.softbank.jp/en/mobile/product/prepaid/301z/>).
- Handset is a mobile phone that supports SoftBank Mobile's Simple Style 3G phone plan. See, "Simple Style User Guide (Japanese)" for details.
- Handset does not support Yahoo! Keitai.
- Subscribers of "Unlimited Mail" can set Email related settings to make changes to Email addresses, etc. via My SoftBank.
- My SoftBank can only be used during "Unlimited Mail" period of validity. SoftBank 301Z supports 3G format.

Precautions

- Reproduction of the contents of this guide in part is prohibited.
- Contents of this guide are subject to change without notice.
- Every effort has been made in preparation of this guide. Should you notice any unclear points, omissions, etc., feel free to contact us (see "Customer Service").

Package Contents

- 301Z (Handset)
- Battery (ZEBAT1)
- AC Charger (ZECAP1)
- Micro USB Cable (ZEDAD1)
- Quick Start (Japanese)
- Quick Start Guide (This guide)
- Warranty (Handset, AC Charger)

- Keep warranty and accessories in a safe place.
- Handset supports microSD™/microSDHC™ Card (hereafter, SD Card). Purchase a commercial SD Card to use.

Handset Manners and Rules

For the Sake of Safety

- **Let's Not Do These Things**
- Do not repair whereas you disassemble, modify or solder. May cause fires, injuries, and electric shock accidents, or malfunctions.
- Do not drop, throw or subject to strong impacts. May result in malfunctions, etc.
- Do not place handset into cooking devices (microwave ovens, etc.), high pressure containers (pressure cookers, etc.), or place on top of electromagnetic cookers (induction heating cookers). May result in malfunctions, etc.
- Do not use or leave in places that get hot (near fires, heating apparatuses, places exposed to direct sunlight, inside of cars, etc. under the blazing sun). May cause deformation of handset, or malfunctions. In addition, a portion of the case gets hot which may cause burns, etc.
- Be careful since handset gets hot via prolonged usage or charging in places subject to high temperatures (near open flames, heating equipment, places exposed to direct sunlight, or inside of cars on hot days, etc.), in addition, in warm places or places easily stifled with heat (kotatsu, electric blankets and pocket heaters in pockets, etc.). Low temperature burns may result if handset is kept in contact with skin for a long time.

Let's Maintain Etiquette!

- **Usage Prohibited for the Sake of Safety**
- Power off handset on board airplanes.
- May be detrimental to safety of aircraft. Powering on mobile phones on board airplanes is prohibited by law, and is subject to criminal punishment.
- Do not use in places where handset usage is prohibited such as hospitals, laboratories, etc. May affect medical devices, etc.
- Do not use near priority seats in trains, or buses, etc. May affect life dependent devices such as pacemakers, etc.
- Since lightning might strike when thunder is heard outdoors when on golf courses, etc., do not use.

Customer Service

Feel free to contact us at the following Customer Service Centers, when you experience problems, or if anything is unclear. Please accurately dial the phone numbers.

SoftBank Customer Support

- **General Information**
- From a SoftBank handset, dial toll free at 157
- From a landline, dial toll free at 0800-919-0157
- **Customer Assistance (loss or malfunction)**
- From a SoftBank handset, dial toll free at 113
- From a landline, dial toll free at 0800-919-0113

Materials List

Parts	Materials/Finishes
Outer Case (Display)	PC/UV finish
Outer Case (side)	PC/UV finish, Serigraph
Outer Case (rear)	PC
Outer Case (Battery)	Base: FR4; Metal part: Coating; Seal: PET
Battery Cover	PC/UV finish
Display	PMMA/Serigraph
Keys (black)	PC/Paint, Laser etched
Keys (silver)	PC/NCVM, Laser etched
USIM Card Slot	Metal part: Copper alloy/Nickel coating; Resin part: LCP
SD Card Slot	Metal part: Stainless steel/Nickel zinc coating; Resin part: LCP
External Device Port	Metal part: Stainless steel/Nickel zinc coating; Resin part: LCP
Earphone Jack	Metal part: Copper alloy/Nickel coating; Resin part: LCP
Camera (lens)	Glass/Serigraph
Camera Ring (silver)	PC/UV finish
Battery terminals	Metal part: Copper alloy/Nickel coating; Resin part: LCP
Screws	Zinc alloy/Black zinc coating

What 301Z Can Do

In standby press any key once to directly call up various functions such as create Email and show call log, etc. Change functions that are called up via shortcut keys.

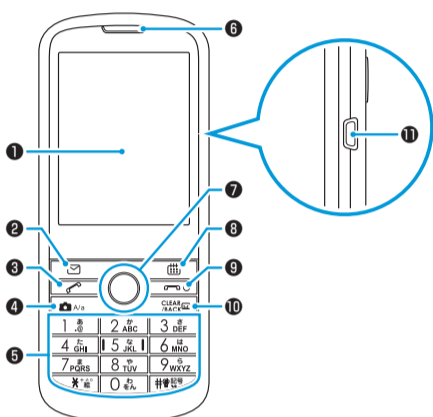
Press Keys to

- Activate Calculator (shortcut for up key)
- Show call log (complete)
- Show Incoming History (shortcut for left key)
- Show Outgoing History (shortcut for right key)
- Show Phone contacts (shortcut for down key)
- Show menu screen /Enter
- Show Email menu
- Show Calendar
- Activate Camera
- Show call log (recorded messages)

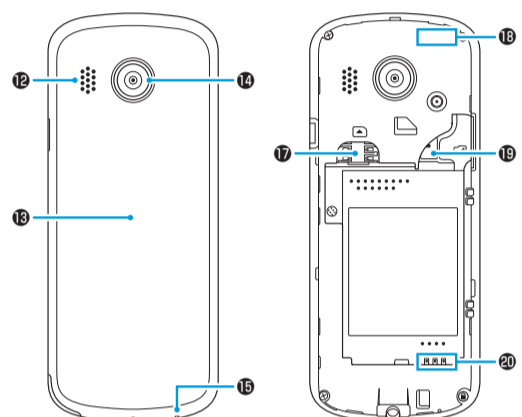
Long Press Keys to

- Activate Voice Recorder
- Activate/Cancel Answering Machine
- Save speed dial
- Save new contact
- Create S! Mail
- Input new schedule
- Speed dial (numeric shortcut keys)
- Activate/Cancel Manner Mode
- Activate/Cancel Display Lock

Parts



- 1 Display
- 2 Email Key
- 3 Call Key
- 4 Camera Key
- 5 Dial Keypad
- 6 Earpiece
- 7 L/R/U/D Keys/Enter Key
- 8 Calendar Key
- 9 Power/Call End Key
- 10 Delete/Back/Set Answering Machine Key
- 11 External Device Port



- 12 Speaker
- 13 Battery Cover
- 14 Camera
- 15 Mic
- 16 Earphone Jack
- 17 USIM Card Slot
- 18 Internal Communication Antenna
- 19 SD Card Slot
- 20 Battery Terminals

Earphone Jack

- Use 3.5 mm Earphone with Mic [ZELAD1] (optional accessory) with this handset. If any other products besides the specified product are used, handset will not properly function, and thereby cause a malfunction.

Internal Communication Antenna

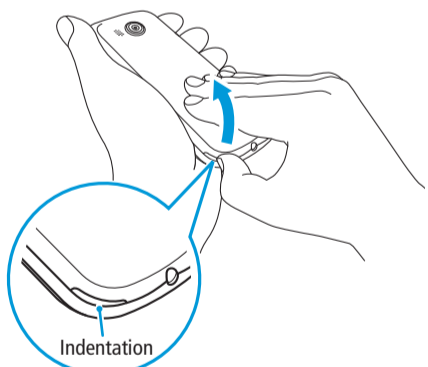
- Do not cover over with stickers, or your hands, since sensitivity may be affected.

Installing USIM Card

IC card that is loaned to you from SoftBank to use handset is called a USIM Card, information such as your phone number, etc. are saved on it. Install a USIM Card to use handset. Refer to USIM Card instruction manual.

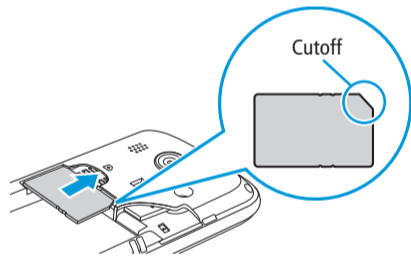
1 Open Battery Cover

- Use your finger to lift up Battery Cover with indentation. Gradually remove Cover along the circumference after creating a gap between Battery Cover and handset.
- Be careful to not damage your fingernail.



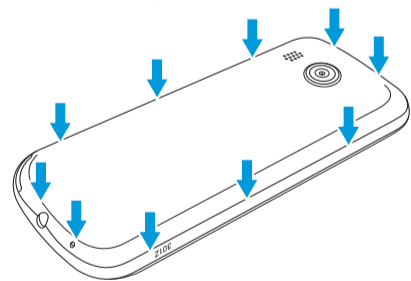
2 Insert USIM Card with IC facing down, all the way in

- Confirm that USIM Card is perfectly installed.



3 Close Battery Cover

- Completely press and close Battery Cover so that it snaps shut such that there are not any gaps between Battery Cover and handset.

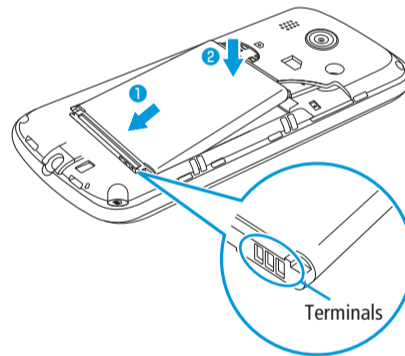


Installing Battery

1 Open Battery Cover

2 Install Battery

- Insert Battery terminals so that they match with handset's terminals as shown 1, then press it in as shown 2.



3 Close Battery Cover

- Since handset will no longer properly function if Battery is removed while in use, absolutely do not remove it while handset is powered on.

Charging Battery

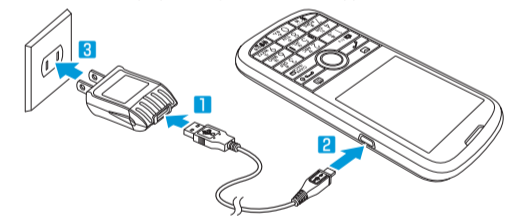
When purchased, Battery is not sufficiently charged. Be sure to charge then use, when initially using.

1 Insert Micro USB Cable USB plug into AC Charger

2 Insert Micro USB Cable Micro USB plug into External Device Port

3 Plug AC Charger into household AC outlet

- While charging, Battery indicator appears.



- If handset and computer are connected with the supplied Micro USB Cable, handset can be charged via a computer.
- Do not use any other AC Charger or Micro USB Cable other than the ones supplied to charge handset. May cause malfunction.

Main Indicators

Signal Strength	Battery Level
Data Communications Active	No Signal
Unread Email	Flight Mode
Mailbox Capacity Insufficient	Manner Mode
Alarm Set	Driving Mode
Message for Answering Machine Recorded	Headphones Connected
SD Card Installed	Emergency Alert Messages

Basic Operations

Main Menu

Press Enter Key (show item)

Press L/R/U/D Keys (Select)

Press Enter Key (enter item)

Softkeys

Show compatible key operations.

Select left softkey

Select center softkey

Select right softkey

Quick Operations

Select menu with Dial Keypad.

Mail

Standby → Long Press → Create S! Mail →

Phone (Phone Book Usage)

Standby → → Select contact → → Select phone number →

Camera

Standby → → →

Video

Standby → → → → "Switch to video camera" → → →

Other Functions

Web Access

Standby → → "MySoftBank"

Calendar

Standby →

Alarm

Standby → → "Alarm" →

Voice Recorder

Standby → → "Tools" → → "Voice recorder" →

Stopwatch

Standby → → "Tools" → → "Stopwatch" →

World Time

Standby → → "Tools" → → "World Time" →

Calculator

Standby → → "Tools" → → "Calculator" →

For further details on how to use, download user guides (PDF files) from SoftBank Mobile Website.
For posts regarding functions not described in this guide.
<http://www.softbank.jp/en/mobile/product/prepaid/301z/>

