



The 37th Annual General Meeting of Shareholders

June 20, 2023

Disclaimer

Important Notice Regarding Forward Looking Statements and Other Information

This document is based on the information available to SoftBank Corp. (“we” or “the Company”) as of the time hereof and assumptions which it believes are reasonable. Statements contained herein that are not historical facts, including, without limitation, our plans, forecasts, strategies and beliefs about our business and financial prospects, are forward-looking statements. Forward-looking statements often include the words such as “targets”, “plans”, “believes”, “hopes”, “continues”, “expects”, “aims”, “intends”, “will”, “may”, “should”, “would”, “could” “anticipates”, “estimates”, “projects” or words or terms of similar substance or the negative thereof. These forward-looking statements do not represent any guarantee by us or our management of future performance or of any specific outcome are subject to various risks and uncertainties, including, without limitation, general economic conditions, conditions in the Japanese telecommunications market, our ability to adopt new technologies and business models, competition with other mobile telecommunications providers, our ability to improve and maintain our telecommunications network, our reliance on third parties in conducting our business, including SoftBank Group Corp. and its other subsidiaries and associates, our major vendors and suppliers, and other third parties, risks relating to M&A and other strategic transactions, risks relating to information security and handling of personally identifiable information, changes in the substance and interpretation of other laws and regulations and other important factors, which may cause actual results to differ materially from those expressed or implied in any forward-looking statement. The Company expressly disclaims any obligation or responsibility to update, revise or supplement any forward-looking statement in any document or generally to the extent allowed by law or stock exchange rule. Use of or reliance on the information in this material is at your own risk. Information regarding companies other than the Company and our subsidiaries and associates is quoted from public sources and others, and we have neither verified nor are we responsible for the accuracy of information. The information presented herein regarding certain joint ventures and collaborations of the Company, Vision Fund and SoftBank Group Corp. portfolio companies and investments has been selected on a subjective basis, is provided solely for illustrative purposes and does not purport to be a complete listing of all such collaborations or joint ventures. SoftBank Group Corp., the Company and the Vision Fund each have different strategies and objectives with respect to their investments and portfolio company operations. There is no guarantee that any joint venture will be consummated on the terms expressed herein or at all, or that the joint venture will be successful. All such plans are subject to uncertainties and risks, as well as investor consents and regulatory approvals, as applicable. References to such portfolio companies and investments should not be a recommendation of any particular investment.

Important Notice Regarding Trading of SoftBank Corp. Common Stock and Unsponsored American Depositary Receipts

The Company encourages anyone interested in trading in its common stock to do so on the Tokyo Stock Exchange. The Company’s disclosures are not intended to facilitate trades in, and should not be relied on for decisions to trade, unsponsored American Depositary Receipts (“ADRs”) representing the shares of its common stock. The Company has not and does not participate in, support, encourage, or otherwise consent to the creation of any unsponsored ADR programs or the issuance or trading of any ADRs issued thereunder. The Company does not represent to any ADR holder, bank or depositary institution, nor should any such person or entity form the belief, that (i) the Company has any reporting obligations under the U.S. Securities Exchange Act of 1934 (the “Exchange Act”) or (ii) the Company’s website will contain on an ongoing basis all information necessary for the Company to maintain an exemption from registering its common stock under the Exchange Act pursuant to Rule 12g3-2(b) thereunder. To the maximum extent permitted by applicable law, the Company disclaims any responsibility or liability to ADR holders, banks, depositary institutions, or any other entities or individuals in connection with any unsponsored ADRs representing its common stock.

Focus on Both Medium- and Long-term Growth and Shareholder Returns

Medium- to long-term growth



Focus

Shareholder returns



**Achieve
record-high profit^{*1}**

**Pursue
high level of returns^{*2}**

(Note) Net Income: net income attributable to owners of SoftBank Corp.

^{*1}: Target for consolidated net income in FY2025

^{*2}: Dividend per share for FY2023 is scheduled to be JPY 86. (Note) Dividend per share for FY2024 and beyond has not yet been determined as of June 2023.

Changes in Business Environment



**Mobile service
price reductions**



COVID-19 pandemic



**New entrants
into the industry**



**NTT
restructure**



Ukraine invasion



**Soaring fuel price/
Inflation**



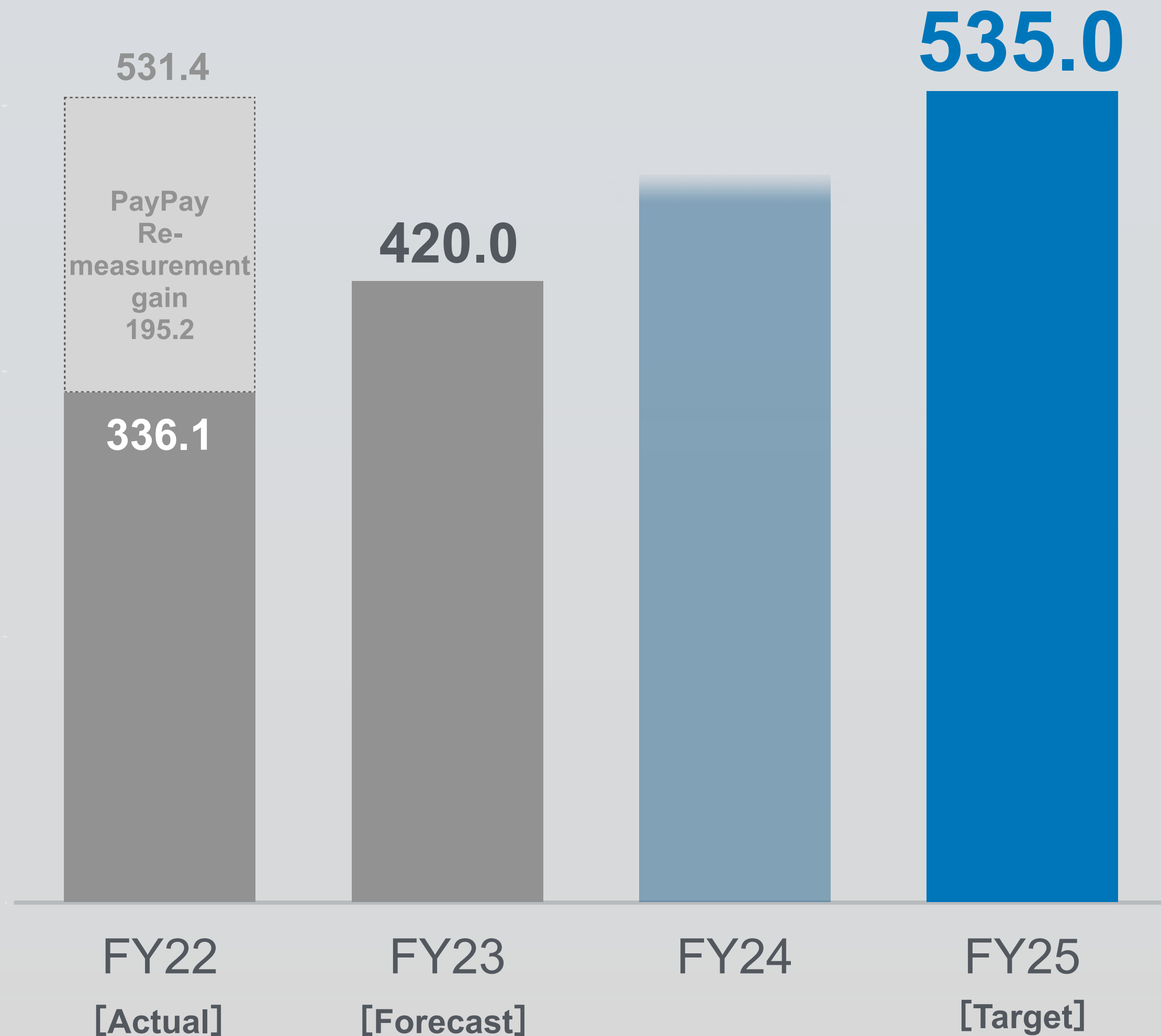
**Rapid yen
depreciation**



**Semiconductor
shortage**

Financial Targets (1) Consolidated Net Income

[JPY bn]



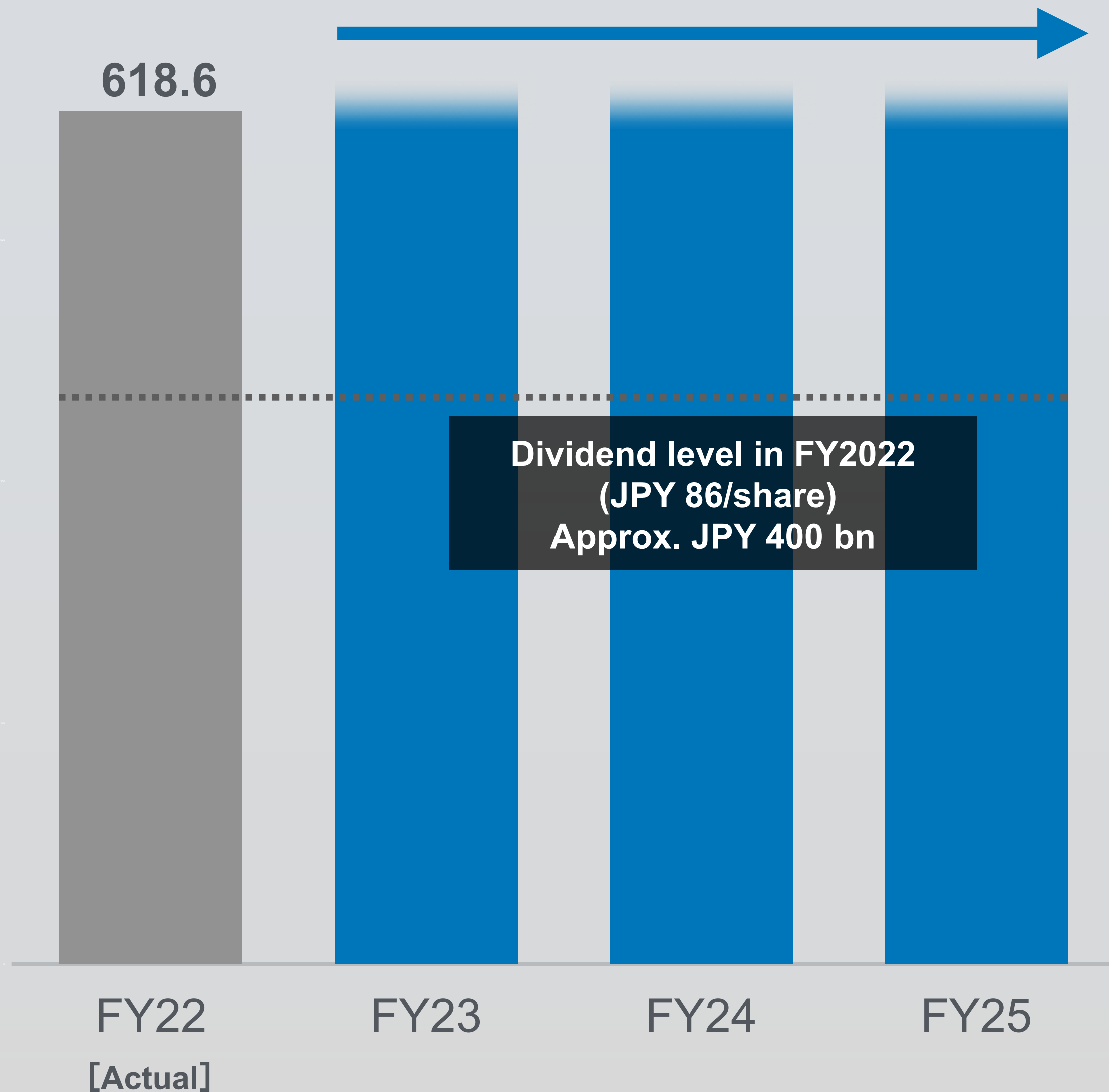
Consolidated net income

**Pursue
Record-high
Profit**

(Note) Net Income: net income attributable to owners of SoftBank Corp.

Financial Targets (2) Adjusted Free Cash Flow

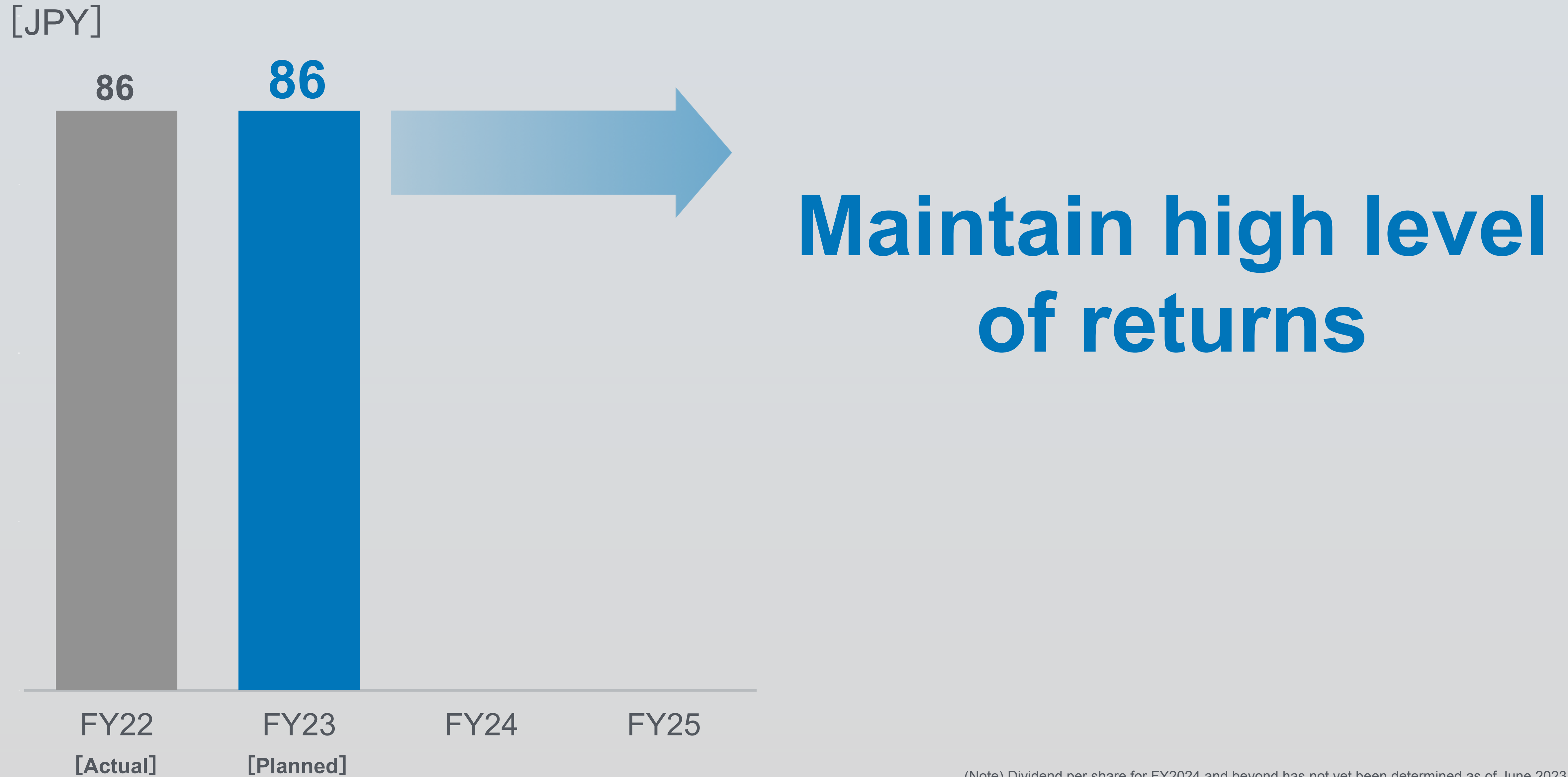
[JPY bn]



**Continue to generate
high level of
adjusted FCF
above FY2022 dividend level**

Definition: Adjusted free cash flow: free cash flow + (proceeds from securitization of installment receivables - repayment thereof)
(Note) Free cash flows of A Holdings Corporation, Z Holdings Group, B Holdings Corporation, PayPay Corporation, PayPay Card Corporation, excluding loans to directors, etc., and including dividends received from A Holdings Corporation. Before deduction of repayment of lease liabilities (telecommunication equipment, real estate rent, etc.), which is recorded as cash flows from financing activities.
The actual amount for FY2022 is 122.4 billion yen.

Shareholder Returns: Dividend per Share



 SoftBank

Further Growth Initiatives

SoftBank

Realize Infrastructure for the Society of the Future



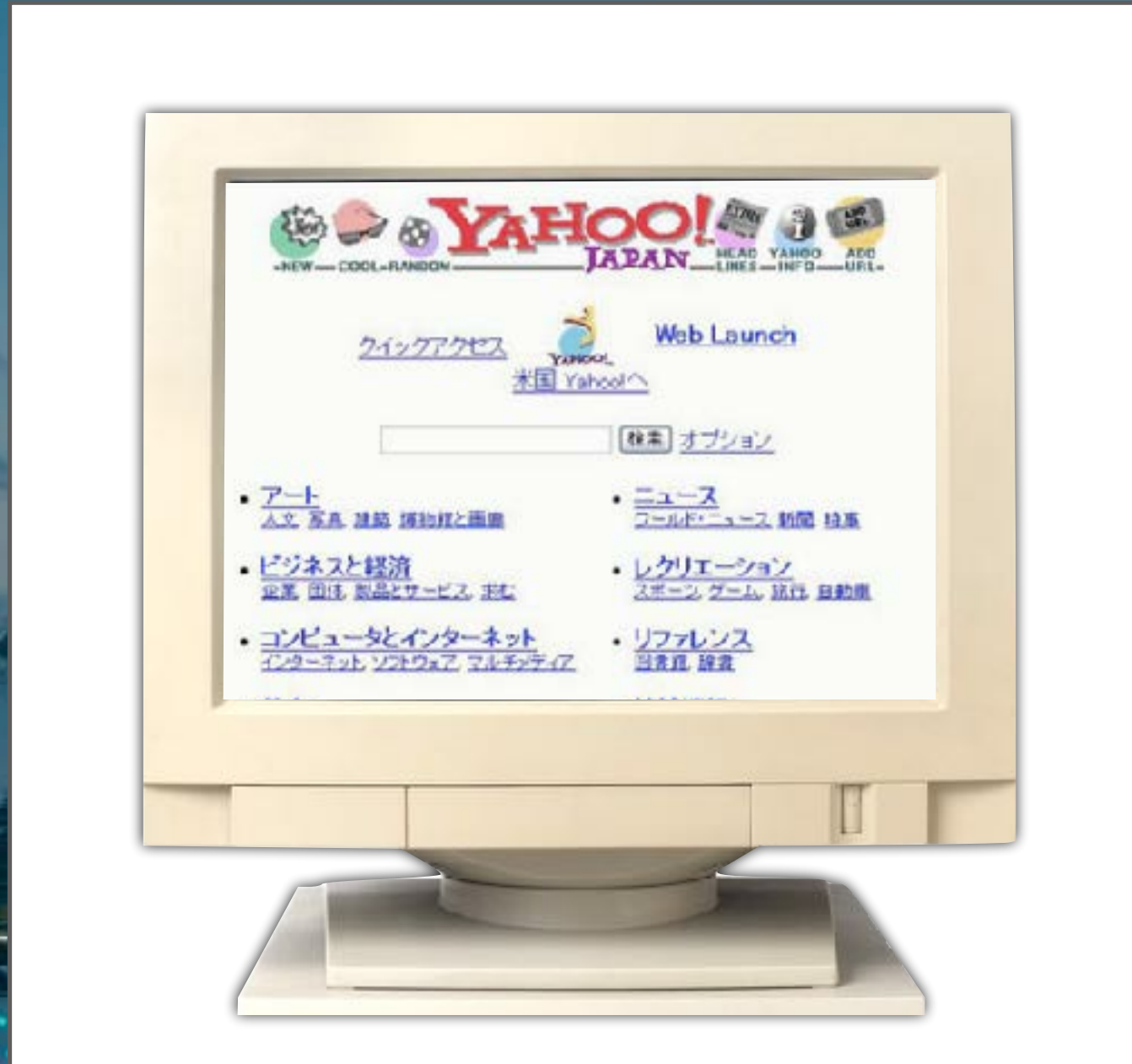
Present



FY2030

Technological Evolution and Social Infrastructure

PC/Internet



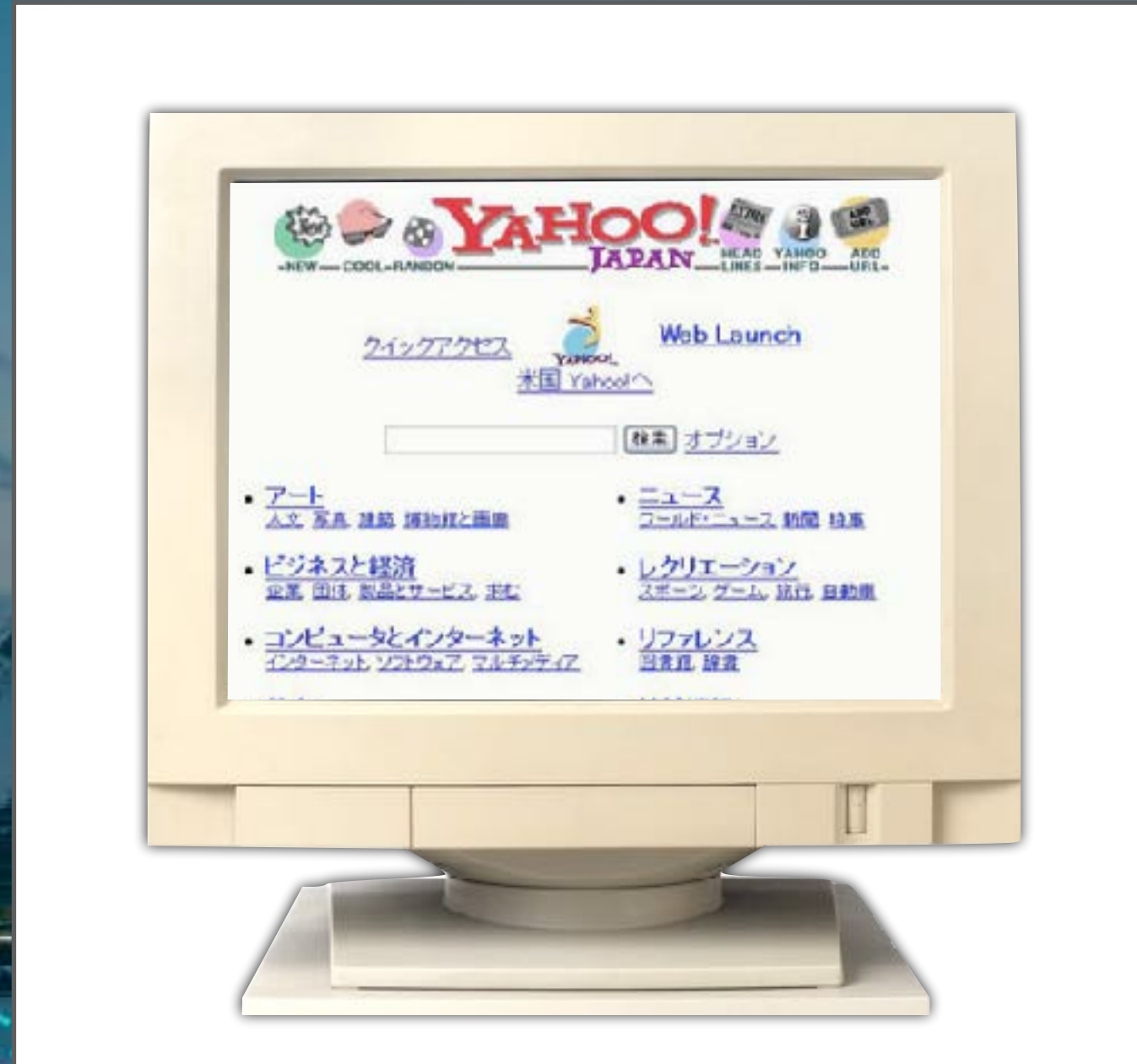
Smartphone



Communication infrastructure

Technological Evolution and Social Infrastructure

PC/Internet



Smartphone



AI



Communication infrastructure

Next-generation
social
infrastructure

Generative AI (interactive AI) Accelerating Around the World

SB

In a society coexisting with AI, how will people's lives change?



When the era of coexistence with AI arrives, people's lives will undergo significant changes in many aspects. Here are a few examples of such changes:

1. Efficient Business Processing: AI can streamline routine tasks and repetitive work processes.

This allows people to save time and energy, enabling them to concentrate on more creative activities and strategic tasks.

2. Prediction and Prevention: AI can analyze large amounts of data and identify trends and patterns. This enables the early detection and prevention of

**Respond with
natural-sounding
sentences
even to
abstract questions**

Just Telling AI What To Do Generates Various Things

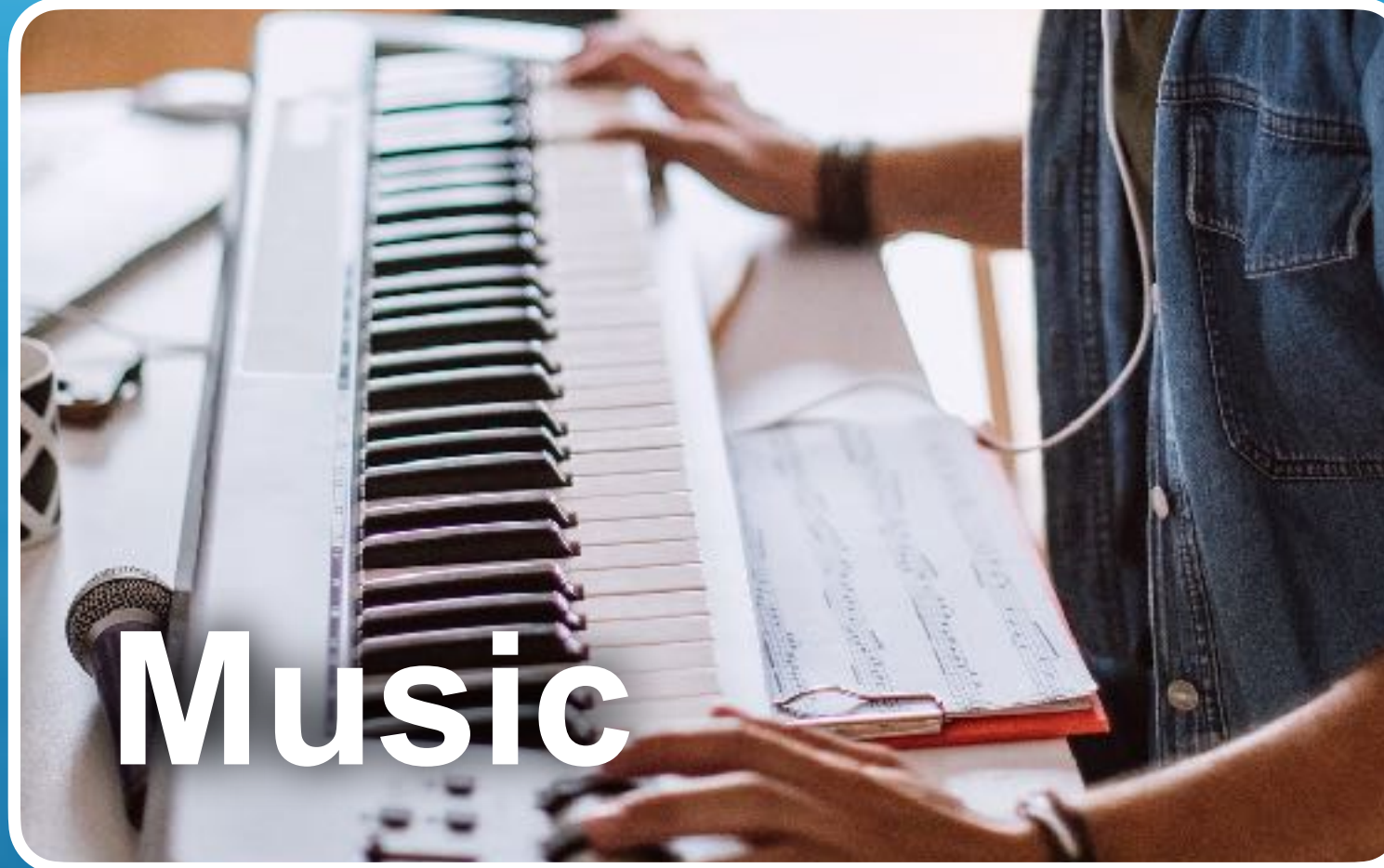
Make a Japanese
spring-like song on
the piano?



Paint a modern
Mona Lisa?



Music



Programming



Movie



Novel



Painting



Interactive AI Further Improves Accuracy

Thought chain-based AI



AI sales staff

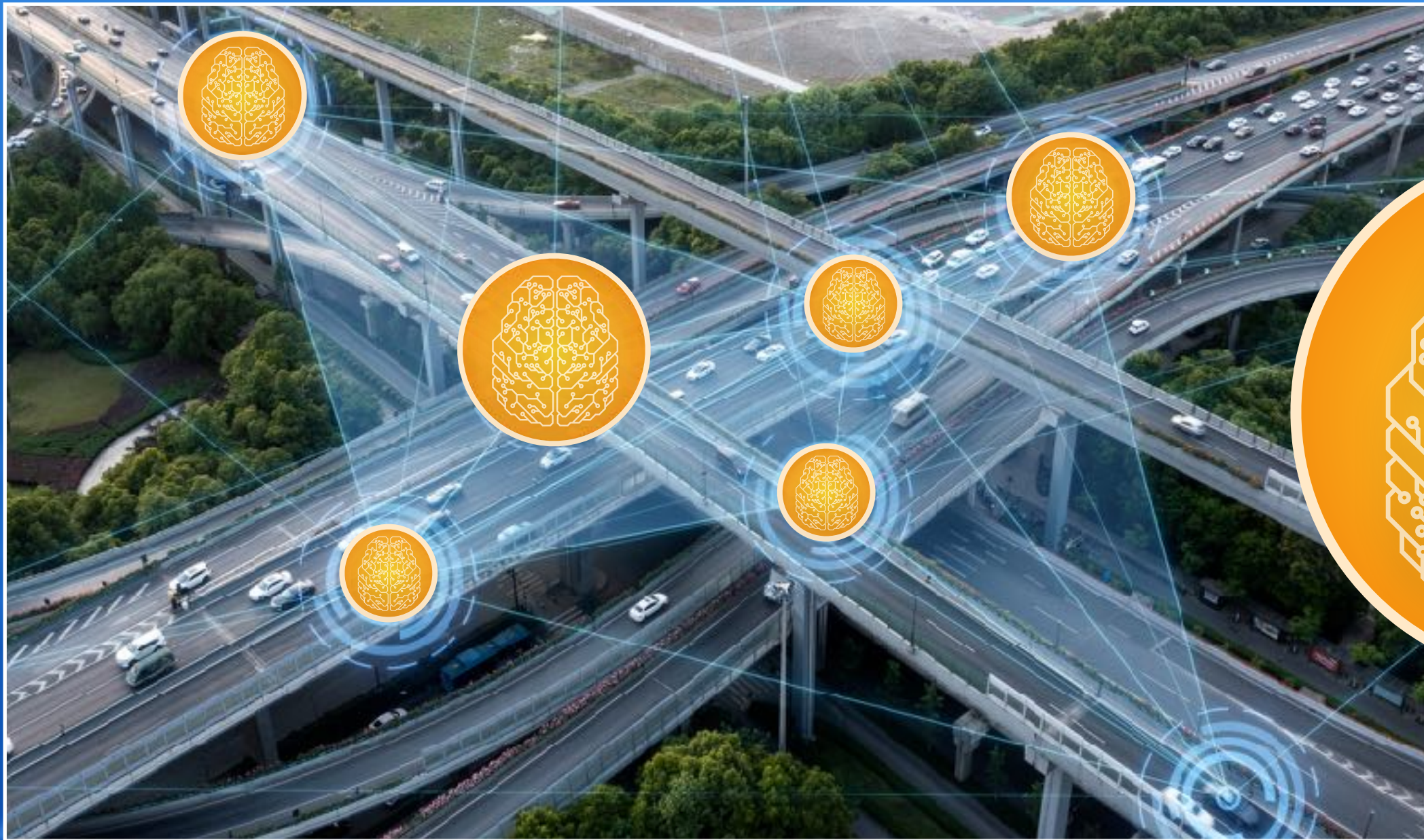


AI app developer

AI thinks and executes necessary tasks on its own

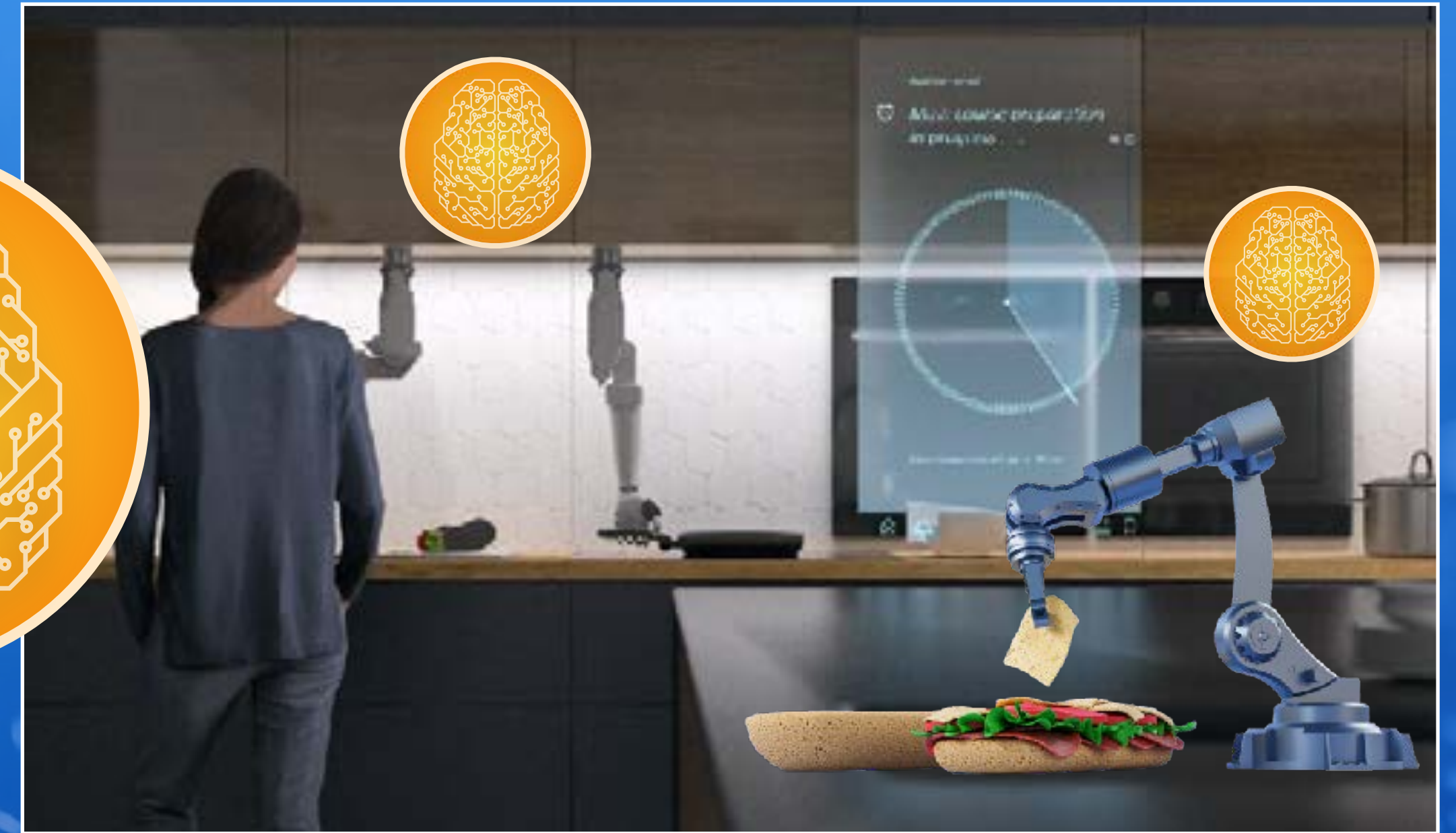
Society where AI Cooperates Autonomously

Optimization of transportation infrastructure by AI



Safe and secure daily life without traffic accidents

Efficiency of housework by AI



Convenient and comfortable daily life

Generation and processing of vast amount of data is required

Computing Capacity Required for Data Processing

[ExaFLOPS]

*Exa: 18 to the power of 10
*FLOPS: Unit of computer processing power.
The ability indicating the number of floating-point arithmetic calculations systems can perform on a per-second basis

Over 12,000

Rapidly increasing data processing demand



2020

2030

2040

2050

6

77

989

Computing Capacity Required for Data Processing

[ExaFLOPS]

*Exa: 18 to the power of 10
*FLOPS: Unit of computer processing power.
The ability indicating the number of floating-point
arithmetic calculations systems can perform on a per-second basis

Super Computer
FUGAKU

14
Systems


6

77

989

Over 12,000

2050



FUGAKU
30,000
systems



Large thermal
power generation
4,500 plants

(Equivalent to 7.5 times the domestic
power generation capacity)

2020

2030

2040

2050

(Source) The estimates by SoftBank Corp. are based on the 5th Semiconductor and Digital Industry Strategy Review Conference (Ministry of Economy, Trade and Industry) (assuming the current trend of increasing computation load)
*The estimates by SoftBank Corp. are based on Fugaku system configuration: 415.5 PFLOPS (as of June 2020), large thermal power = 535,000 kW, large thermal power conversion = calculation capacity divide back to DC
Domestic power generation capacity: Compiled by SoftBank Corp. based on "Compilation of FY2023 Supply Plan" by the Organization for Promotion of Wide-Area Electricity Utilization.

Fundamentally Solve Structural Issues in Infrastructure

Present



Data processing/power consumption is
concentrated in urban areas



Next-generation social infrastructure



Data processing and power will be
decentralized to regional areas

Distributed AI Data Centers

Regional brain



Computing infrastructure

Core brain

HPC / AI infra

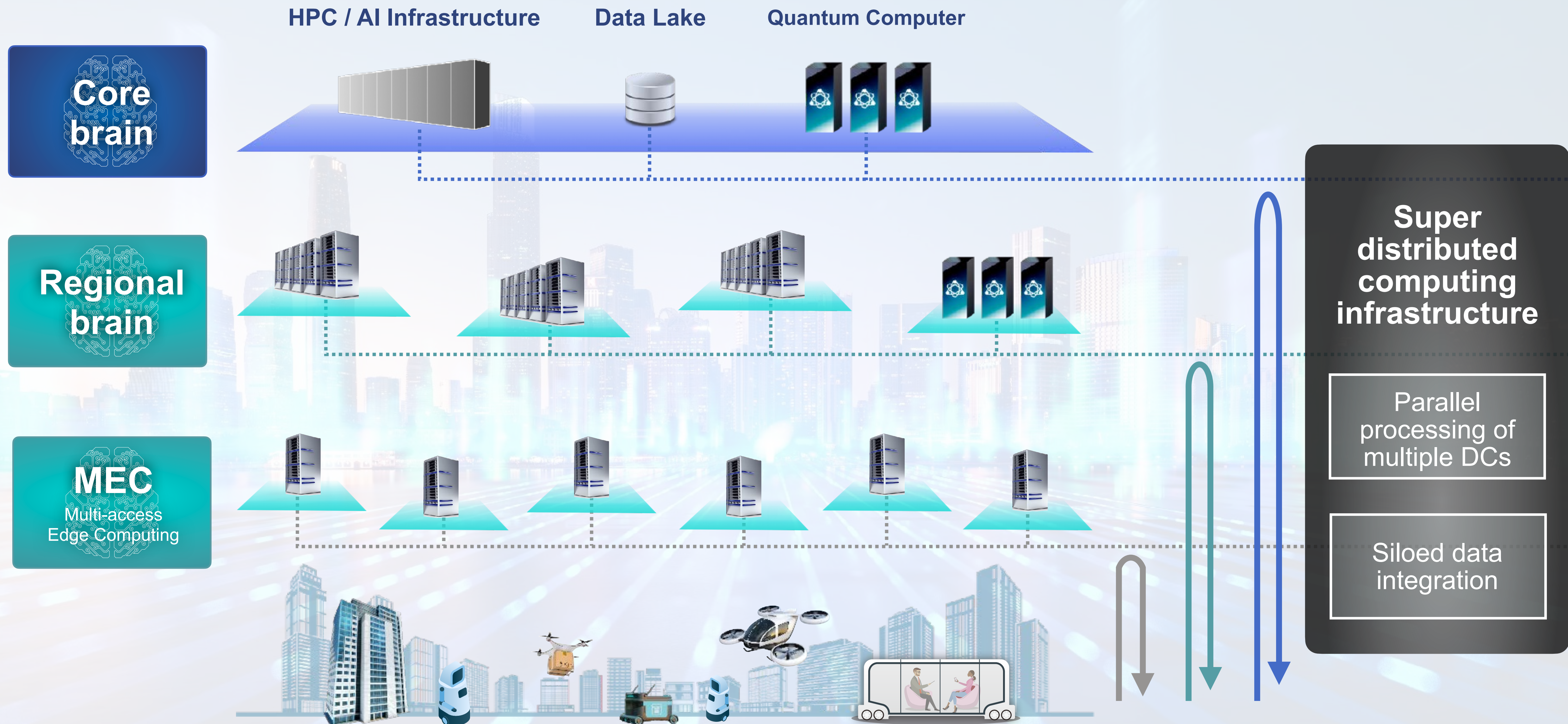
Data Lake

Quantum Computer



- Distributed computing infrastructure
- Green energy procurement

Deployment of Distributed AI Data Centers



Deployment of Distributed AI Data Centers

HPC / AI Infrastructure

Data Lake

Quantum Computer

Core
brain

Regional
brain

MEC
Multi-access
Edge Computing

Super
distributed
computing
infrastructure

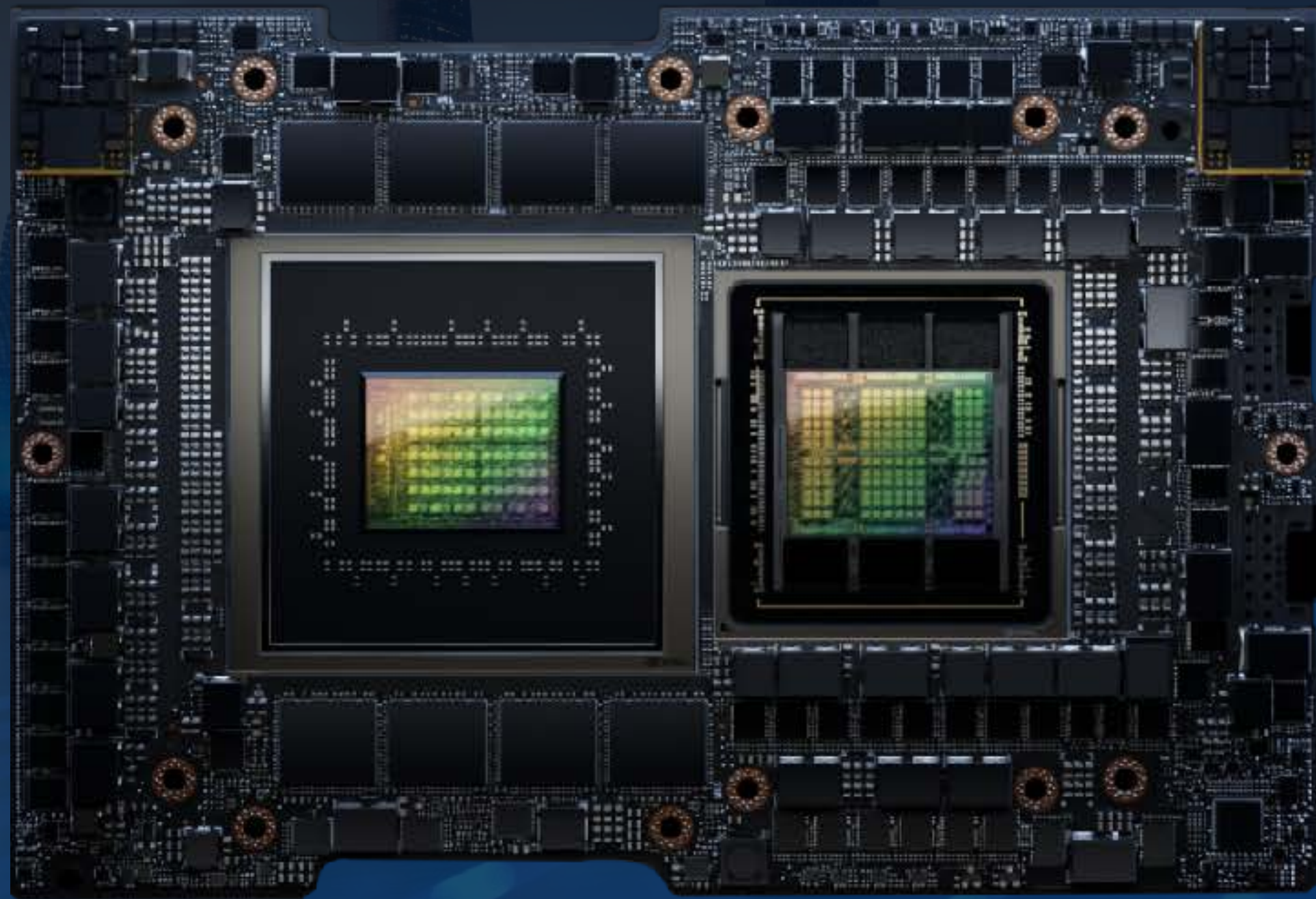
Parallel
processing of
multiple DCs

Siloed data
integration

Deploying Cutting-edge Super-chips into Computing Infrastructure



arm



**Large scale AI
computing processing**

**Low power consumption
(Efficient design)**

NVIDIA GH200 Grace Hopper Superchip

AI x Next Generation Mobile Network

AI - RAN

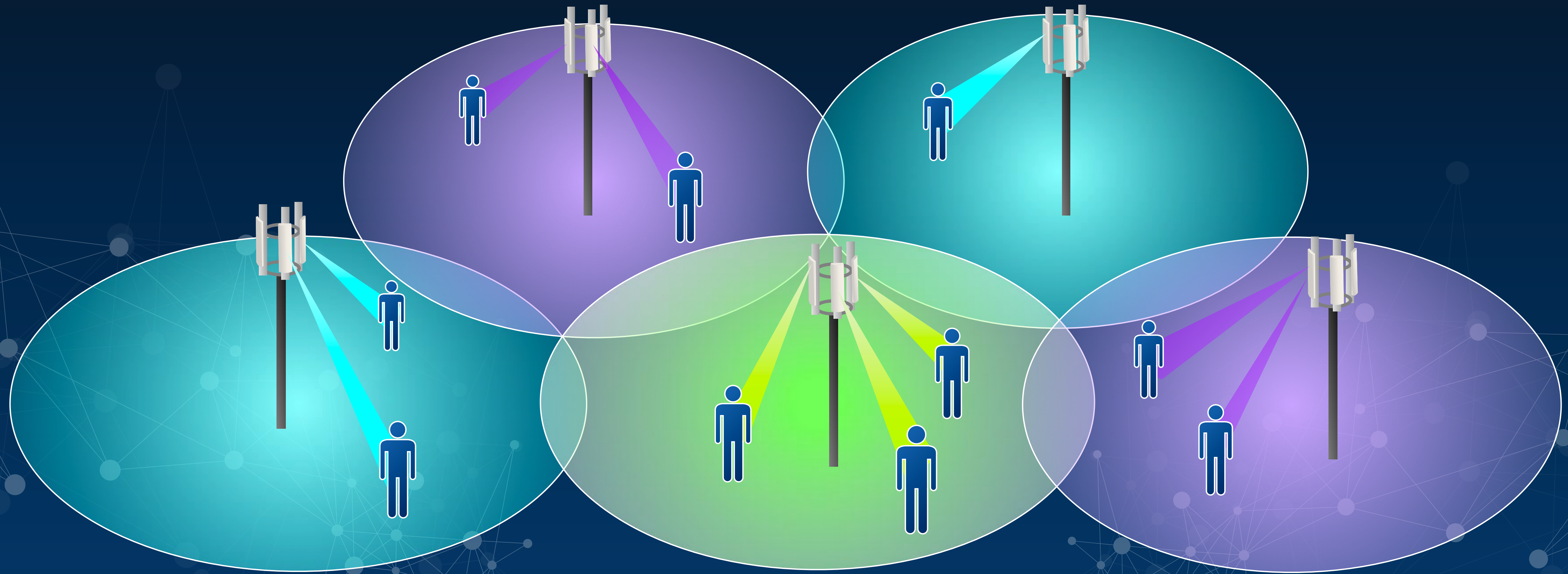


nVIDIA®

arm

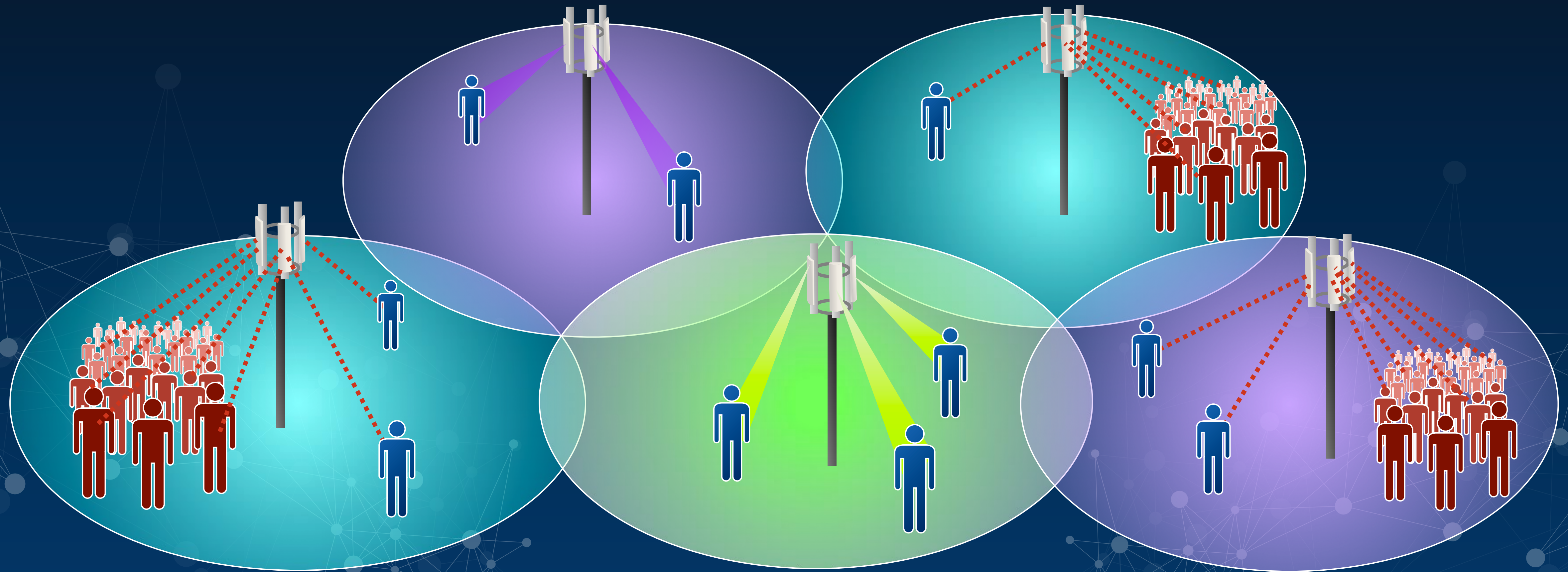
= SoftBank

Current Mobile Network



Adjusting the signal area for each base station

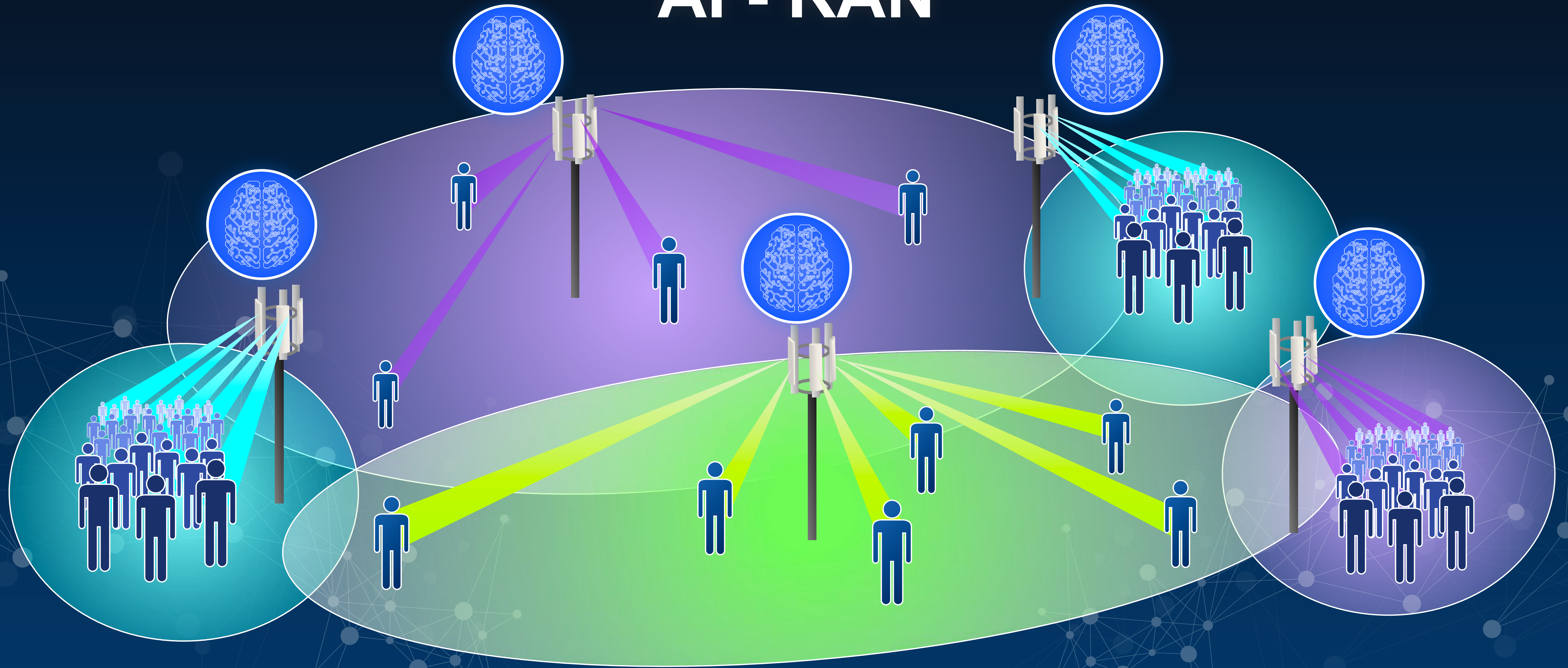
Current Mobile Network



Difficult to adjust for traffic

(Irregularities occur in frequency and power usage at each base station)

AI - RAN



Base stations cooperate with each other autonomously to optimize the entire area

Building Next-generation Social Infrastructure to Support AI Coexisting Society



AX
AI Transformation

SoftBank
**Next-generation
Social Infrastructure**



Information Revolution — Happiness for everyone



