



## **Vodafone K.K. to launch Vodafone Office Mail**

*Japan's first push email service lets customers check their PC emails in real-time*

Vodafone K.K. announces today that from 18 January 2006 it will offer 'Vodafone Office Mail', a push email service that lets customers remotely access company email, address books and schedule details in real-time on a Vodafone K.K. 3G handset<sup>\*1</sup>. The service is the first<sup>\*2</sup> of its kind in Japan to automatically 'push' mails directed to company PC email addresses to mobile handsets.

To enable any customer to access essential information anywhere, Vodafone Office Mail will be offered to both business customers and consumers. For increased accessibility to consumers, customers using POP3 mail servers provided by ISPs (Internet Service Providers) will also be able to view and reply to server mail on their handsets.

The main features of Vodafone Office Mail are as follows:

- Japan's first service to push company emails to handsets in real-time so customers can reply to mails on their handsets with their company PC mail addresses
- Internal meeting request mails can be received on handsets to enable instant availability replies. Customers can confirm their latest schedules remotely as calendars on work PCs and handsets are synchronised in real-time<sup>\*3</sup>
- Possible to view, edit and add to address books remotely<sup>\*3</sup>

With the introduction of Vodafone Office Mail, Vodafone K.K. will offer two types of services to meet customer needs. The 'Enterprise Server' service is suitable for large scale usage, and is available for an initial charge of 10,000 yen (10,500 yen incl. tax) per company and a monthly charge of 500 yen (525 yen incl. tax) per line. The 'Personal Edition' service has no start up costs and allows for one line subscriptions or more at a monthly charge of 500 yen (525 yen incl. tax) per line.

Vodafone Office Mail uses Visto's push mail service platforms 'Visto Mobile™ Enterprise Server' and 'Visto Mobile™ Personal Edition'.

For more information on Vodafone Office Mail, please see the attached appendix.

\*1: Available on the Vodafone 702NK II (Nokia 6680). Vodafone K.K. plans to successively expand the number of compatible models.

\*2: As of 15 December 2005, among mobile operators in Japan (according to Vodafone K.K.).

\*3: Personal Edition (ISP version) does not support calendar and address book synchronisation.

- ends -

- 2005 Visto Corporation. All rights reserved. Visto Corporation, Visto, Visto Mobile, Visto Mobile Enterprise Server, Visto Mobile Personal Edition are trademarks or registered trademarks of Visto Corporation.

- Windows is an abbreviation for Microsoft Windows operating system.

- Microsoft, Windows and Outlook are registered trademarks of Microsoft Corporation in the US and other countries.

- Lotus, Lotus Notes, Notes and Lotus Domino are trademarks of IBM Corporation.

- Office Mail is a trademark of Vodafone K.K.

- Vodafone, Vodafone live! and the speech mark symbol are trademarks or registered trademarks of Vodafone Group Plc.

### **About Vodafone K.K.**

Vodafone K.K. is a leading mobile operator in Japan with over 15 million customers and a subsidiary of Vodafone Group Plc, the world's largest mobile community. The Tokyo-based company offers a wide range of sophisticated mobile voice and data services including Vodafone live!, which provides mail and internet access to 85% of its customers, and pioneered the picture messaging service called Sha-mail first introduced in November 2000. In December 2002, Vodafone K.K. launched the world's first commercial 3G W-CDMA service based on 3GPP international standards. Vodafone K.K.'s 3G service offers its customers rich content and roaming in 129 countries and regions on 180 networks. For more information, please visit [www.vodafone.jp](http://www.vodafone.jp) \*Above data is current as of 30 November 2005.

**Vodafone Office Mail**

1. Service Overview

Service that allows customers to manage company email, address books and schedule details in real-time remotely on a Vodafone K.K. 3G handset<sup>\*1</sup>.

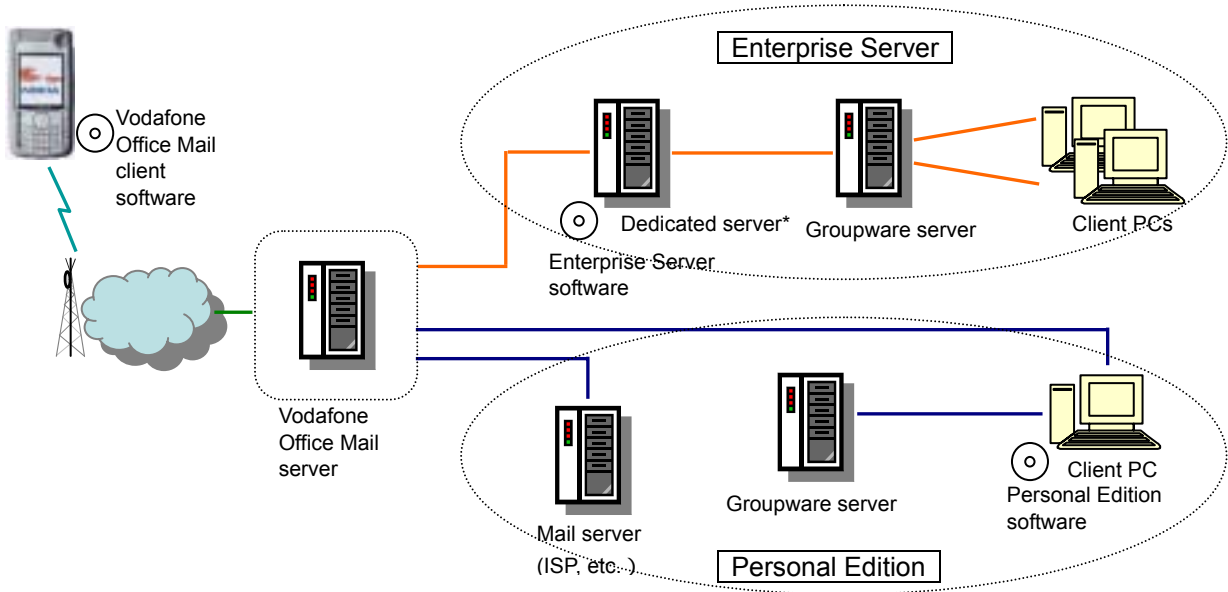
- Japan's first<sup>\*2</sup> push email service to enable customers to receive company PC emails on their handsets in real-time. Customers can also respond using their PC company email addresses, allowing for immediate replies to important emails.
- Internal meeting request mails can also be received on handsets, and customers can instantly reply on their availability. Customers can confirm their latest schedules remotely as schedules on work PCs and handsets are synchronised in real-time<sup>\*3</sup>.
- Possible to view, edit and add contacts to address books remotely, thereby eliminating the need to carry around a notebook PC or pocketbook<sup>\*3</sup>.

\*1: Available on the Vodafone 702NK II (Nokia 6680). Vodafone K.K. plans to successively expand compatible models.

\*2: As of 15 December 2005 (according to Vodafone K.K.).

\*3: Personal Edition (ISP version) does not support calendar and address book synchronisation.

2. Network Structure and Service Types



\*Up to 250 licenses are available with each server. The number of licenses can be increased by using multiple servers.

Type		Service Overview
Enterprise Server <sup>*1</sup>		Suitable for large scale usage, service uses a dedicated server installed with exclusive software connected to a groupware server. The Enterprise Server service can only be used by business customers.
Personal Edition <sup>*2</sup>	PC version	Service is available for one line subscriptions or more and uses exclusive software installed directly on the groupware client PC, making it suitable for relatively small scale usage.
	ISP version	Customers using POP3 mail servers provided by ISPs (Internet Service Providers) will be able to view and reply to server mail on their handsets.

\*1: Enterprise Server can only be used when the dedicated server and Enterprise Server software are in operation.

\*2: Personal Edition can only be used when the client PC and Personal Edition software are in operation.

### 3. Hardware Requirements

Type	Dedicated server / compatible OS	Groupware server	Groupware
Enterprise Server	- Minimum 1.5GHz processor - Minimum 1GB of memory - Minimum 2GB of disk space - Microsoft Windows Server 2000 SP1, 2003	- Microsoft Exchange 5.5, 2000 SP-4, 2003	- Microsoft Outlook 2002 SP3, 2003
Personal Edition	Client PC/compatible OS	Groupware Server	Groupware
	- Minimum 64MB of memory - Minimum 32MB of disk space - Windows 2000 SP-4, XP	- Microsoft Exchange 5.5, 2000 SP-4, 2003	- Microsoft Outlook 2002 SP3, 2003
	Client PC/compatible OS	Mail Server	Groupware
	-	- Company POP3 server - Internet POP3 server	-

- Service is scheduled to support Lotus Domino/Notes at a later date
- Usage environments are scheduled to be progressively expanded

### 4. Charges

Type	Initial charge	Monthly charge
Enterprise Server	10,000 yen (10,500 yen incl. tax) / company*	500 yen (525 yen incl. tax) / line
Personal Edition	None	500 yen (525 yen incl. tax) / line

- Vodafone Office Mail usage is charged separately from customers' price plan monthly basic charges, packet communication charges, and Vodafone live! basic charge (300 yen (315 yen including tax)) per line.
- A separate dedicated server installation cost is required to use Enterprise Server.

### 5. Applicable Packet Communication Discount Services

Dual Packet Flat-rate or Happy Packet or Packet Economy

### 6. Compatible Handsets

Vodafone 702NK II (Nokia 6680) \*scheduled to go on sale on 17 December 2005

### 7. Service Launch

From 18 January 2006

### 8. Usage Method

- Enterprise Server

Please contact the Vodafone K.K. customer centre for Enterprise Server inquiries.

[Vodafone K.K. Customer Center]

From a Vodafone K.K. handset: 157 (no charge)

From a fixed-line phone: 0088-21-2000 (no charge)

- Personal Edition

The Personal Edition can be used by downloading a dedicated application from Vodafone live! using the Vodafone 702NK II (Nokia 6680).

Access method from Vodafone live! top menu

Menu list → Communication/mail → Mail appli → Vodafone Office Mail

\*Menus are in Japanese