

26 July 2005

**Vodafone K.K. to offer Japan's first 3G data card roaming service***Upgraded VC701SI can be used on W-CDMA networks in 18 countries & regions*

Vodafone K.K. announces today that from early September 2005 it will market a new version of its currently available VC701SI Vodafone Connect Card (manufactured by SII) with upgraded firmware\*<sup>1</sup> to let customers roam on W-CDMA networks overseas at high packet transmission speeds of up to 384kbps for downlinks (on a best effort basis\*<sup>2</sup>). Marking a first in Japan\*<sup>3</sup>, this upgrade will enable customers to enjoy mobile internet access abroad on PCs or PDAs using 3G data cards.

The Vodafone Connect Card, which is currently available as the W-CDMA (3G) compatible VC701SI CompactFlash® (Type II) data card terminal, was launched in April 2004 exclusively for data usage in Japan, is popular among individuals and business customers in particular. With this upgrade, Vodafone Connect Card can be used on W-CDMA networks in 18 countries and regions in Europe and Asia (on the networks of 20 mobile operators), to support the mobile communications of customers going abroad for business trips. For easy connections while roaming abroad and enhanced ease-of-use, the upgraded Vodafone Connect Card comes bundled with Roaming Tool software (which supports Windows® 98SE/Me/2000/XP and Mac OS X).

From early September 2005, Vodafone K.K. will send CD-ROM upgrades, which contain the Firmware Upgrade Tool and Roaming Tool, to all customers currently using the VC701SI. The same software tools are also scheduled to be available for download from SII's website in early September.

Vodafone K.K. announced on 11 July that it would revise the price plans\* for the Vodafone Connect Card on 1 August. With the launch of this international roaming service, Vodafone K.K. will further enhance convenience for Vodafone Connect Card customers.

For further information on international roaming service areas for Vodafone Connect Card, packet communication fees, and Roaming Tool usage, please see the attached appendices.

\*1 Program that is embedded into hardware to conduct basic operations.

\*2 Depending on the service area used in, communication speed may be a maximum 128kbps (max. 64kbps in some cases). Since the service is based on a best effort system, speeds may be slower or be disconnected depending on degree of network congestion and usage environment. 64K digital data communications are not supported for overseas use.

\*3 As of 26 July 2005 (source: Vodafone K.K.)

\*4 Free communication allowances included with price plans, mail and web discount services, and other discount services are not applicable to international roaming communications.

- Windows® is used as an abbreviation for the Microsoft® Windows® operating system.
- Microsoft® is a registered trademark of Microsoft Corporation in the US and other countries.
- CompactFlash® is a registered trademark of SanDisk Corporation in the US.
- Vodafone Connect Card is a trademark of Vodafone K.K.
- Vodafone and the speech mark symbol are trademarks or registered trademarks of Vodafone Group Plc.

### **About Vodafone K.K.**

Vodafone K.K. is a leading mobile operator in Japan with nearly 15 million customers and a subsidiary of Vodafone Group Plc, the world's largest mobile community. The Tokyo-based company offers a wide range of sophisticated mobile voice and data services including Vodafone live!, which provides mail and internet access to 85% of its customers, and pioneered the picture messaging service called Sha-mail first introduced in November 2000. In December 2002, Vodafone K.K. launched the world's first commercial 3G W-CDMA service based on 3GPP international standards. Vodafone K.K.'s 3G service offers its customers rich content and roaming on 160 networks in 119 countries and regions. For more information, please visit [www.vodafone.jp](http://www.vodafone.jp)

\*Above data is current as of 30 June 2005.

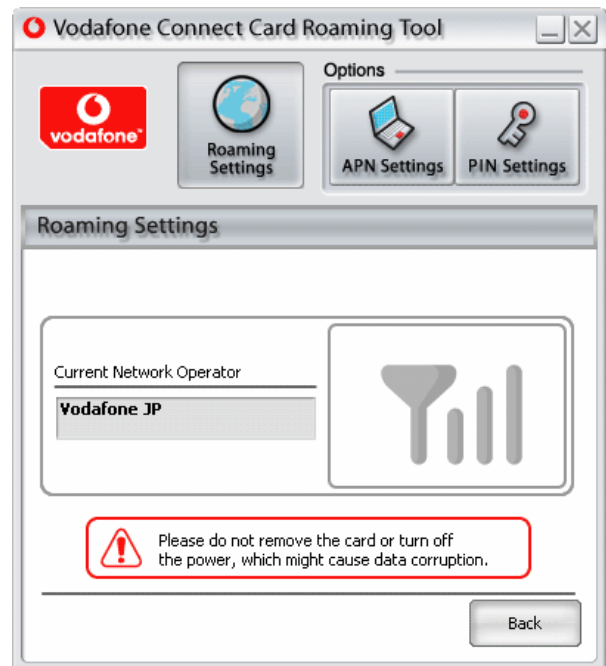
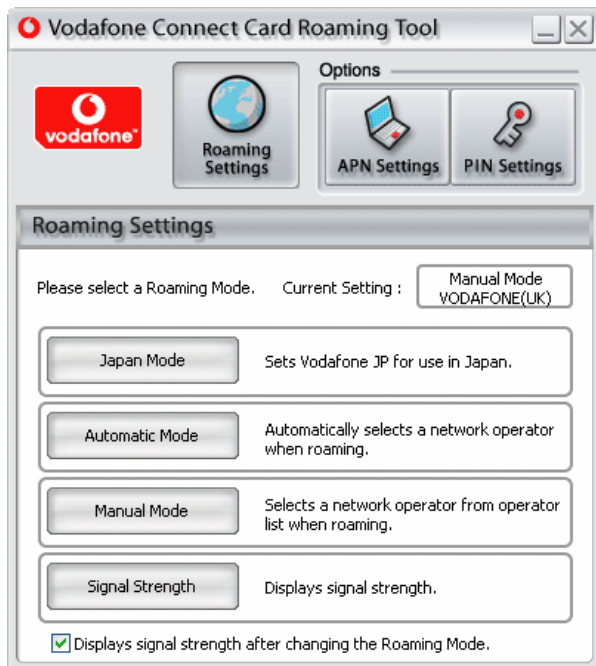
## Vodafone Connect Card International Roaming Service Areas and Packet Communication Charges

As of 26 July 2005

	Country or Region	Operator	Packet communication charges	
			Charge	Other charges and notes
Asia	Hong Kong	CSL	26 yen/10KB	-
		SmarTone-Vodafone	26 yen/10KB	-
		Sunday	2 yen/1KB	-
	Israel	Partner	26 yen/10KB	-
	Singapore	M1	3 yen/1KB	-
		SingTel	2 yen/1KB	-
Europe	Belgium	Belgacom Mobile	30 yen/10KB	-
	Finland	Sonera	2 yen/1KB	-
	France	SFR	20 yen/10KB	Minimum charge of 148 yen is billed per session when data is under 75KB.
	Germany	Vodafone Germany	148 yen/75KB	-
	Greece	Vodafone Greece	2 yen/1KB	Minimum charge of 21 yen is billed per session when data is under 10KB.
	Italy	Vodafone Italy	2 yen/1KB	23 yen setup charge is billed per session separately from communication charges.
	Netherlands	Vodafone Netherlands	2 yen/1KB	Minimum charge of 148 yen is billed per session when data is under 75KB.
	Portugal	Vodafone Portugal	20 yen/10KB	Minimum charge of 148 yen is billed per session when data is under 75KB.
	Slovenia	Mobitel	20 yen/10KB	-
	Spain	Vodafone Spain	2 yen/1KB	Minimum charge of 148 yen is billed per session when data is under 75KB.
	Sweden	Vodafone Sweden	2 yen/1KB	-
	Switzerland	Swisscom	61 yen/30KB	-
	United Kingdom	Vodafone UK	2 yen/1KB	-
Africa	Canary Islands	Vodafone Spain	2 yen/1KB	Minimum charge of 148 yen is billed per session when data is under 75KB.
	South Africa	Vodacom	27 yen/10KB	-

\*Free communication allowances included with price plans, mail and web discount services, and other discount services are not applicable to international roaming communications.

## Vodafone Connect Card Roaming Tool Usage Image



- **Japan Mode:** For domestic use in Japan. Connects only to the Vodafone K.K. network.
- **Automatic Mode:** For overseas use. Automatically selects Vodafone Group operators.
- **Manual Mode:** For overseas use. Shows available operators for manual selection.
- **Signal Strength:** Displays signal strength for selected network.