

Basic Operations	2-2
Handset Operations.....	2-2
Window Description (Standby)	2-3
Touch Panel	2-4
Accessing Functions.....	2-6
Main Menu.....	2-7
Using Simplified Menus (Simple Menu) ...	2-10
Shortcuts Menu & Key Shortcut	2-11
Standby Shortcuts	2-12
Toggling Active Functions (Multi Job) ...	2-14
Motion Control	2-15

Basic Functions	2-17
Manner Mode & Offline Mode	2-17
Changing Font Size	2-18
Wallpaper	2-19
Customized Screen (Japanese)	2-20
Customizing Handset Responses ...	2-21
My Details & Basic Tools	2-22
Handset Security	2-23
Changing Handset Code	2-23
Operations Security	2-24
Information Security	2-25
Software Update	2-26
Double Number.....	2-27
Using Double Number	2-27
Modes.....	2-28
Additional Functions	2-30
Troubleshooting.....	2-38

2

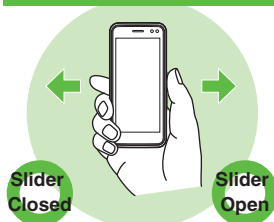
Basic Operations



Handset Operations

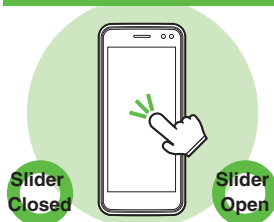
Use handset keys, Touch Panel or Motion Control. Keypad Lock prevents accidental operation/function activation via Touch Panel.

Motion Control



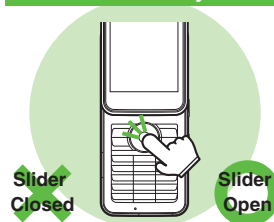
Move handset (e.g., shake it left or right) to execute functions, and more.
(Complete setup beforehand.)

Touch Panel



Touch menu items or Softkeys; supports most handset operations.

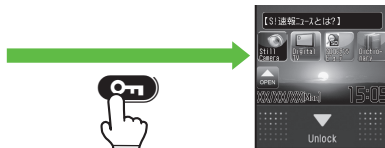
Handset Keys



Use Keypad, etc.; supports most handset operations.

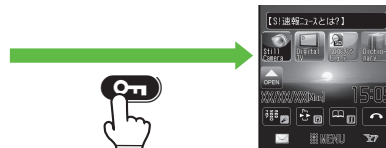
Touch Panel & Keypad Lock

With Slider closed, Display goes dark and Keypad Lock activates after a period of inactivity or pressing **On**.



Press **On** to illuminate Display. (Keypad Lock is still active.)

- Alternatively, to cancel Keypad Lock, swipe a finger down across ▼ **Unlock**.



Press **On** again to cancel Keypad Lock.
(Touch Panel is unlocked.)

Advanced

- Disabling Keypad Lock activation when Display turns off
- Setting Keypad Lock to activate upon Slider close (P.2-31)



Window Description (Standby)

Display Orientation

With Slider closed, rotate handset 90 degrees counterclockwise for landscape view; rotate back for portrait view.

- Adjust setting to switch to widescreen with Slider open.



Softkeys

Tap to execute assigned functions/operations. Bottom three Softkeys correspond to handset keys below.



Long Touch to use functions/operations assigned to framed Softkeys.



Indicator Area



Standby Shortcuts

Execute functions/operations in Standby.

Mobile Widgets

Save various widgets (applications and services) to Standby.

Indicator Descriptions

Tap indicator area to check active indicators and their descriptions. (Status Touch)

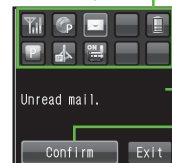


Indicator Area



Active Indicators

Touch indicators to view their descriptions.



Description


Operation Key

Tap to open menu/window.

Missed Calls, New Mail, Etc.

Information window opens at the bottom.



Tap an item or highlight an item and press  to open it.

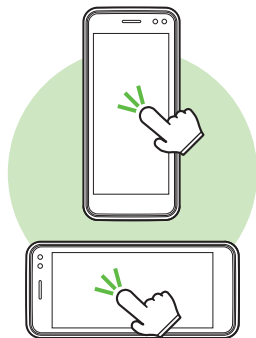
Advanced

-  Handling Information list (P.2-31)



Touch Panel

Touch Display to select menu items, move pointer, scroll pages, etc.



Selection & Execution

■ Tap



Tap Display to open windows or execute Softkey functions/operations.

- Tap twice to execute certain operations.

Special Operations (Double Tap)

Tap twice in rapid succession (within approximately 0.6 seconds) to switch window size while Multi Job is active, to enlarge/reduce images, etc.


■ Long Touch



Touch and hold Display to execute certain functions/operations.

Long Touch Operations

Softkeys

Execute alternative function/operation assigned to Softkey (e.g., Long Touch  to open Dictionary).

Standby & Function Windows

Long Touch Display to open function/operation menu.

Internet Pages & Post-Image Capture Windows

Enlarge specific areas.

Text Entry Windows

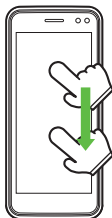
Long Touch onscreen hiragana key to open list of hiragana in that row with 'or', etc.

Advanced

- Adjusting Touch vibration (P.2-31)



Move/Draw (Drag)



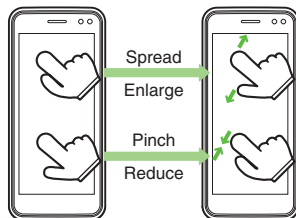
Touch and drag target item to move it; release your finger to stop/save. Move icons, scroll lists, etc.

Screen Scroll (Swipe)



To see items outside Display area, swipe a finger across Display in opposite direction.

Enlarge/Reduce (Spread/Pinch)



Pinch or spread your fingers to reduce or enlarge images, etc.

Important Usage Notes

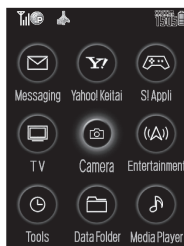
- Touch Panel may not respond in these situations:
 - Use with gloved fingers/fingernails
 - Use of pens, pencils or other sharp objects
 - Use with objects placed on/against Display
- To prevent malfunctions, do not:
 - Touch Display with wet fingers
 - Subject Display to force/pressure
 - Place labels or stickers over Display
- Calibrate Touch Panel (P.2-9) to improve response.



Accessing Functions

Use the following methods as needed.

Main Menu



Repeat menu item selection.

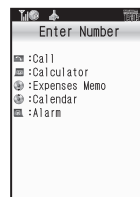
Select menu items

Use shortcuts



Enter numbers

Quick Operations



Open Slider

Enter numbers to access functions.
To activate functions, press the corresponding key.

Shortcuts



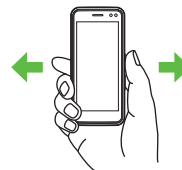
Access assigned functions
(changeable).

Standby Shortcuts



Save functions to Standby.

Quick Shortcut



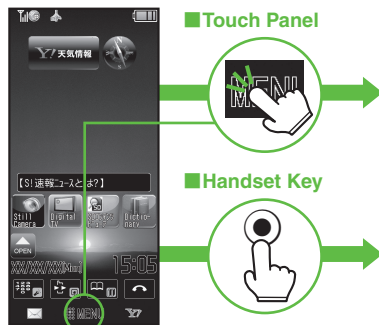
Shake handset to access assigned functions. (Complete setup beforehand.)

Access a function in Shortcuts menu while another is active, then toggle function windows as needed.



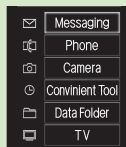
Main Menu

Opening Main Menu

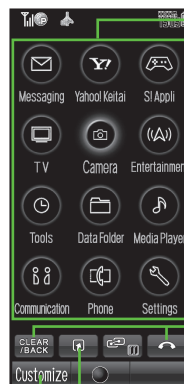


Simple Menu

- Simplify menus and enlarge fonts; ideal for users who use only basic handset functions.



Window Description



Main Menu Items

Messaging	Open/create messages, etc.
Yahoo! Keitai	Browse the Internet
S! Appli	Use S! Applications including games
TV	Watch/record TV programs
Camera	Capture images or record video
Entertainment	Read e-Books, receive news updates, etc.
Tools	Manage schedules, set Alarm, scan QR Codes, etc.
Data Folder	Open files saved on handset/Memory Card
Media Player	Play/download media files
Communication	Communicate with other users in various ways
Phone	Search contacts, add entries, etc.
Settings	Customize handset interface, sounds, etc.

Exit Main Menu

Handset returns to Standby. (Alternatively, press .)

Open Shortcuts Menu

Access shortcuts. (Alternatively, press .)

Customize

Use Customized Screen.



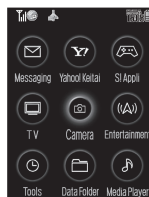
Follow these steps to open **Key Operation** in Phone Help via handset keys or Touch Panel:

2

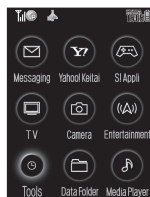
Basic Operations

Menu Navigation (Handset Keys)

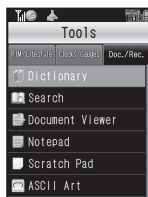
Press **○** in Standby



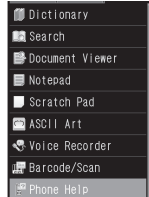
Use **○** to highlight **Tools**



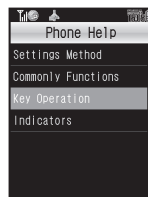
Use **○** to highlight **Doc./Rec. tab**



Use **○** to highlight **Phone Help**



Use **○** to highlight **Key Operation**



Go to
P.2-9

Open
Main Menu

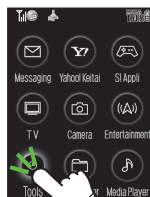
Select Item

Open Tab

Select Item



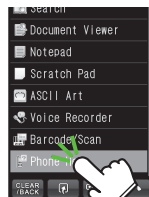
Tap **MENU** in Standby



Tap **Tools**



Tap **Doc./Rec. tab**



Tap **Phone Help**



Tap **Key Operation**

Go to
P.2-9

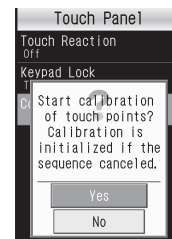
Menu Navigation (Touch Panel)



Calibrating Touch Panel

Calibrate Touch Panel to improve response.
Hold handset normally during calibration.

- 1 **MENU** or **●** ➔ **Settings**
- 2 In Phone menu, **Touch Panel**
- 3 **Compensation**

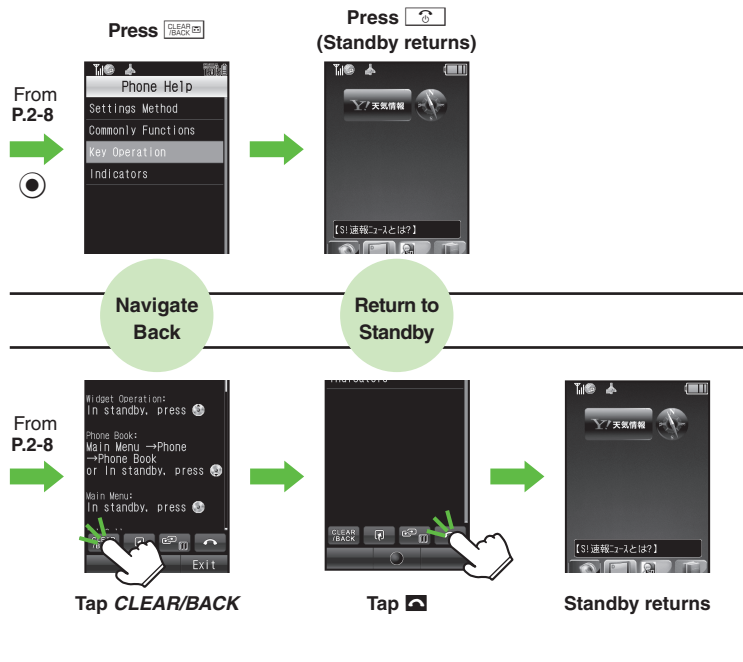


- 4 **Yes**
 - Follow onscreen instructions.

Undo Calibration

- If calibration does not improve response, follow these steps to restore default setting:

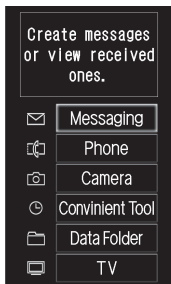
After 4, **CLEAR/BACK** or **CLEAR/BACK**



Using Simplified Menus (Simple Menu)

Simple Menu Features

Activate Simple Menu to reduce available handset functions and simplify menus.



- Fonts are enlarged and appear in bold.
- Clock is enlarged (Calendar is hidden).
- Only Display Change is available for Motion Control.

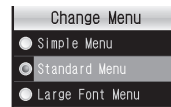
Menu Items

Messaging	Received Msg., Create Msg., Drafts, Templates, Sent Messages, Unsent Msg., Create SMS
Phone	Phone Book, Add New Entry, Play Messages, Answer Phone, Call VM, My Details, Speed Dial/Mail
Camera	-
Convinient Tool	Calendar, Alarms, Calculator, Assignment, Dictionary, Notepad, S! GPS Navi, Pedometer, Compass, S! Friend's Status, S! Circle Talk, Double Number Settings, Change Menu
Data Folder	-
TV	-

Key assignments are largely the same as in Standard Menu.

Activating Simple Menu

- MENU** or **Settings**
- In Phone menu, **Change Menu**



- Simple Menu**

While Using an Incompatible Function

- End the function before activating Simple Menu.

Canceling Simple Menu

- MENU** or **Convinient Tool**
- Change Menu**
- Standard Menu**

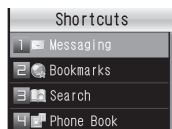


Shortcuts Menu & Key Shortcut

Shortcuts Menu

Access assigned functions via Shortcuts menu.

1 (Long) or




Shortcuts Menu


2 Select function

- Menu/window opens.

Changing Default Shortcuts









In 2, **Shortcut Settings** ➔ Highlight numbered function ➔ **Options** or  ➔ **Assign** ➔ Select menu item ➔ Select new item

Changing Item Order


In 2, **Shortcut Settings** ➔ Highlight numbered function ➔ **Options** or  ➔ **Move** ➔ Select target location

Key Shortcut

Long Press /  or /  or  to access assigned functions.

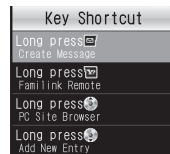
 or 	Open S! Mail Composition window
 or 	Activate Familink Remote
	Open PC Site Browser menu
	Create new Phone Book entries
	Activate/cancel Bluetooth®
	Activate/cancel Infrared

Changing Assigned Functions

Follow these steps to assign Calculator to :

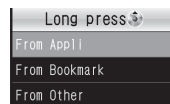
1 **MENU** or ➔ **Settings**

2 In Phone menu, **Set Key Shortcut**



Key Shortcut Menu

3 **Long press**



4 **From Appli**

5 **Tools** ➔ In PIM/Lifestyle menu, **Calculator**

Bookmark

In 4, **From Bookmark** ➔ Select title ➔ Yes

Bluetooth® or Infrared On/Off

In 4, **From Other** ➔ Select item

Canceling Assigned Function

In 4, **Off**

Advanced

-  ● Restoring default shortcuts (P.2-31)



Standby Shortcuts

Paste shortcuts to functions, files, folders, etc. to Standby for easy access.
Most operations are described for Touch Panel.

Saving Shortcuts to Standby

1 (OPEN)



- When (OPEN) does not appear, press or .

2 Highlight tab



3 Drag item to Standby

- Corresponding icon appears in Standby.
- >> appears when more items are available.

4 (CLOSE) ➔ Completed

Saving from Menu/Window

- In Options menu, select **Set as StbyShortcut**. (May not appear for some items.)

Removing Shortcuts from Standby

Long Touch icon ➔ **Remove** ➔ **Yes**

Moving Icons

- Drag icon to target location.

Using Shortcuts

1 Tap icon

- Menu/window opens or command is executed.
- When no icon appears, press or .

Toggle Sheets

Toggle sheets to use Standby shortcuts and widgets pasted on each sheet.

1 While (OPEN) appears, swipe finger left or right across Display



Swipe left ↓ ↑ Swipe right




- When (OPEN) does not appear, press or .
- Sheet name appears at the top, then disappears.
- Save Standby shortcuts as needed; corresponding icons appear on the current sheet.

Using Locked Sheets

➔ Enter Handset Code ➔ **OK** or












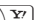




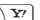

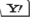
Handling with Handset Keys

To handle Standby shortcuts with handset keys, press  to activate pointer first.



Pointer

When finished, press  (pointer disappears).

Saving Standby Shortcuts	Use  to point to  (OPEN) ➡  ➡ Highlight  tab ➡ Select item ➡ 
Using Shortcuts	Use  to point to icon ➡ 
Removing Shortcuts	Use  to point to icon ➡  ➡ <i>Remove</i> ➡ <i>Yes</i>
Moving Icons	Use  to point to icon ➡  ➡ <i>Change Layout</i> ➡ Specify target location ➡ 
Moving Icons to Front/Back	Use  to point to icon ➡  ➡ <i>To Front</i> or <i>To Back</i>
Switching Sheets	Use  to point to blank area (no icons) ➡ 

Advanced

 ● Editing sheet names ● Locking sheets (P.2-32)

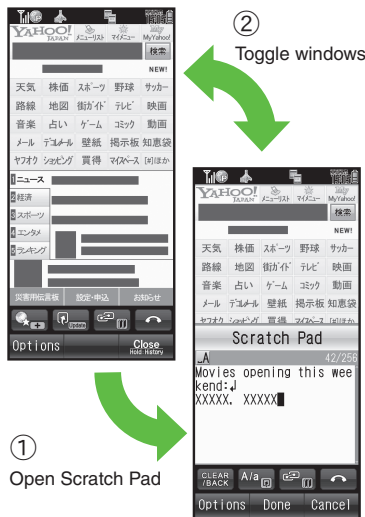


Toggling Active Functions (Multi Job)

Multi Job Feature

Access a function in Shortcuts menu while another is active.

While browsing the Internet



1 Open Scratch Pad

Jot down information

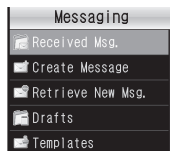
Using Multi Job

1 In a function window, or

In text entry/dial windows, Long Touch .

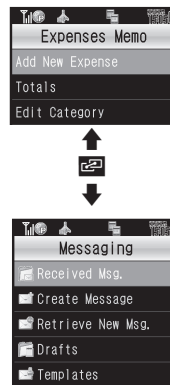


2 Select function



• Menu/window opens.

3 Toggle active windows



• Double-tap function name to change window size.

4 or ➡ Multi Job ends

• When a confirmation appears, follow onscreen prompts.



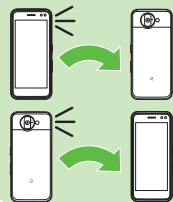
Multi Job may not be activated from some menus/windows (e.g., when selecting ringtone/ringvideo, etc.).

Motion Control

Sensor detects handset orientation or movement. Move handset to navigate pages, mute ringer, etc.

- Cancel Keypad Lock and activate Display first.
- Activate Motion Control by function beforehand.

Turn Over



Activate Quick Silent

Turn handset over to instantly mute ringer and stop vibration.

Ringer

Incoming Calls,
Alarms, etc.

Vibration

Incoming Calls,
Alarms, etc.

- Some tones may not be silenced.

Quick Shortcut

Shake handset left and right approximately three times in Standby to access assigned functions.

- Change assigned functions as needed.

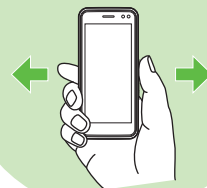
Activate Camera

Portrait
Orientation

Activate TV

Landscape
Orientation

Shake Left/Right



Navigate Functions

Shake to the left to navigate back, or right to navigate forward.

Music

Music Player

Channels

TV

Images

Data Folder
(Pictures)

Pages

Document
Viewer

Multi Job

Shake to the left or right to toggle active windows

Toggle Windows

Multi Job



Shake Forward or Backward



Zoom In/Zoom Out

Shake forward to enlarge, or backward to reduce.

Fonts

Yahoo! Keitai
Message Window

Zoom Image

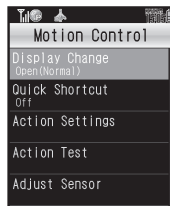
Data Folder
(Pictures)

Zoom Page

PC Site Browser
Document Viewer

Activating Motion Control by Function

- 1 **MENU** or ➔ **Settings**
- 2 In Phone menu, **Motion Control**



Motion Control Menu

- 3 **Action Settings**
- 4 **Select function**
- 5 **On**

Enabling Quick Shortcut

- 1 In Motion Control menu, **Quick Shortcut**
- 2 **Switch On/Off**
- 3 **On**

Activating Show Secret Data Temporarily
Enter Handset Code ➔ Shake handset left or right

- Close Slider in Standby; Show Secret Data is canceled when Display goes dark.

Important Motion Control Usage Notes

- Hold/shake handset correctly to avoid unintended results.
- Motion Control may be unavailable while handset is ringing/vibrating.
- Confirm there is ample space for Motion Control use; hold handset firmly and shake it gently to avoid injury/breakage. Do not shake handset roughly; handset may slip, resulting in injury or damage.

Advanced

- Locking Display in portrait view • Setting Display rotation to Auto • Changing Quick Shortcut items • Practicing Motion Control actions • Adjusting Motion Control sensor (P.2-32)



Manner Mode & Offline Mode

Manner Mode

Mutes most handset function sounds.

1  (Long)




- Manner mode is set.

When Manner Mode is Active

- Ringtones and other sounds are muted.
- 931SH vibrates for transmissions/alerts.
- Shutter click still sounds at fixed volume.

Canceling Manner Mode

 (Long)

Offline Mode

Temporarily suspends all transmissions.

1 **MENU** or  ➔ **Settings** ➔
Highlight **Network** tab

2 **Offline Mode**

3 **On**



- Offline Mode is set.

Canceling Offline Mode

In , **Off**

Advanced

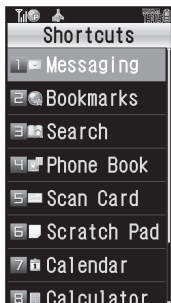
-  ● Changing handset modes ● Creating a custom mode ● Resetting Mode Settings (P.2-32)



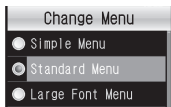
Changing Font Size

Enlarging All Fonts

Activate Large Font Menu to enlarge fonts for menus, text entry, etc. as follows:



- 1 **MENU** or  ➔ **Settings** ➔ In Phone menu, **Change Menu**



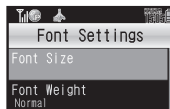
- 2 **Large Font Menu**

Canceling Large Font Menu
In ②, **Standard Menu**

Customizing Font Sizes

- 1 **MENU** or  ➔ **Settings** ➔ In Phone menu, **Display**

- 2 **Font Settings**



Font Settings Menu

- 3 **Font Size** ➔ **Select item**
- 4 **Select size**

Changing Font Weight

- 1 In Font Settings menu, **Font Weight**



- 2 **Select weight**

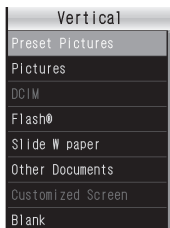


Wallpaper

1 MENU or  ➔ **Settings** ➔
In Phone menu, **Display**

2 **Wallpaper**

3 **Vertical or Horizontal**




Wallpaper Menu

4 **Preset Pictures** ➔ **Select image**

- Some files may not be usable.

Selecting Images with Limited Usage Period

- A confirmation appears. Follow these steps:
Yes ➔ **Assign** or 
If Double Number Mode Menu Opens
Select mode

Slide Show Wallpaper

Set Slide Show to appear in Standby.
Some images may not appear.

1 In Wallpaper menu, **Slide W paper**

2 **Folder Setting**

3 **Pictures or DCIM**



4 **Select sub folder**

- Omit **4** if there is no sub folder.

5 **Set this folder**

If There is No Image in Set Folder

- Preset images appear.





Using Preset Images

In **3**, **Preset Pictures**

Changing Pattern

In **2**, **Pattern Setting** ➔ **Select pattern**

Advanced

-   Changing Clock/Calendar  Changing image enhancement option for Standby and video playback  Showing Network service provider name in Standby (And more on P.2-33)



Customized Screen (Japanese)

Downloading Customized Screen

Use preloaded Customized Screen or download new via handset as follows:
Read information (price, etc.) on Customized Screen download page.

- 1** **MENU** or  **Data Folder**
➔ **Customized Screen**





Customized Screen Menu

- 2** **Download Customized Screen**
- Handset connects to the Internet and source site list appears. Follow onscreen instructions.

Customized Screen Setup

To install the most recent version, apply the file then download the updated one.

- 1** In Customized Screen menu,
select Customized Screen
- 2** **Apply** or  **OK** or 

Applying Fee-based Customized Screen

- If Contents Key is required, follow these steps:


After **1**, **OK** or  ➔ **Yes**

- Read terms of service and then follow onscreen instructions.

When Selected Customized Screen is Active

- Cancellation confirmation appears after **1**.

Advanced

-  ● Accessing Customized Screen source sites ● Applying preset Customized Screen ● Canceling Customized Screen ● Canceling Customized Screen unconditionally ● Deleting Customized Screens (P.2-33)

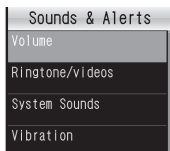


Customizing Handset Responses

When using Double Number in Dual Mode (P.2-27), press **►B** or **\V** in Ringtone/videos menu to switch modes.

Ringtone

- 1 MENU or ► Settings ► In Phone menu, Sounds & Alerts**

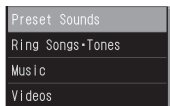


Sounds & Alerts Menu

- 2 Ringtone/videos**

- 3 Select item**

For *For New Message*, etc., select **Assign Tone**.



- 4 Select folder**

- 5 Select tone/file**

Setting Ring Time for Incoming Mail, etc.

After **Ⓢ**, **Duration** ► Enter time ► **Accept** or **Ⓢ**

Playing Video for Incoming Transmissions
In **4**, **Videos** ► Select file

If Portion of File Content is Specifiable

- After **Ⓢ**, start point selection window opens; select start point.

Selecting Files with Limited Usage Period

- A confirmation appears. Select **Yes** to proceed.

Ringtone Volume

- 1 In Sounds & Alerts menu, Volume**

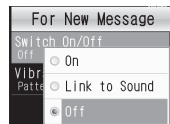
- 2 Select item**

- 3 Adjust level ► Accept or**

Vibration

- 1 In Sounds & Alerts menu, Vibration**

- 2 Select item ► Switch On/Off**



- 3 On**

- 4 Vibration Pattern**

- To check vibration patterns, highlight one and press **Check** or **Ⓢ**.

- 5 Select pattern**

Setting Ringtones to Control Vibration
In **Ⓢ**, **Link to Sound**

Precaution

- Cancel Vibration when charging battery to help avoid accidents.

Advanced

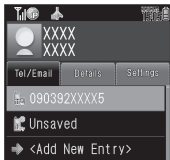
- Disabling System Sounds ● Changing System Sound duration ● Changing System Sound volume ● Setting illumination for missed incoming transmissions (And more on P.2-34)



My Details & Basic Tools


My Number

- 1 **MENU** or  ➔ **Phone** ➔ **My Details**



- Handset phone number and the name entered at initial setup appear.

Pen Light


- 1  (Long)
 - Mobile Light illuminates.
- 2 **Side Key** ➔ **Mobile Light goes out**
 - First key press for other function use also turns off Mobile Light.

Important Pen Light Usage Note

- Do not point Pen Light at people or look at it directly.

Phone Help

Access this handy guide to handset settings and key functions/shortcuts.

- 1 **MENU** or  ➔ **Tools** ➔ **Highlight Doc./Rec. tab**
- 2 **Phone Help**
- 3 **Select item**
 - Toggle guides as needed.

VeilView

Activate VeilView to prevent peeking.

- 1  (Long)

Canceling VeilView

- 1  (Long)

Advanced

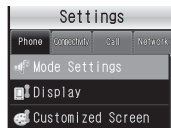
-  ● Editing/clearing My Details ● Toggling My Details in Dual Mode ● Changing VeilView pattern/density ● Disabling USB Charge (P.2-36)



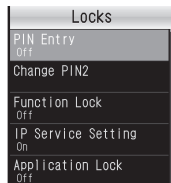
Changing Handset Code

Enter four to eight digits for new Handset Code.

1 **MENU** or **OK** → **Settings**



2 In Phone menu, **Locks**



3 **Chg. Handset Code**



4 **Enter current Handset Code**
→ **OK** or **OK**



5 **Enter new Handset Code** →
OK or **OK**



6 **Re-enter new Handset Code**
→ **OK** or **OK**



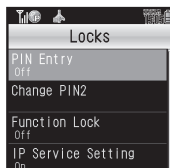
Operations Security

Function Lock

Restrict access to handset functions.

Auto (Link to Slider)	Lock when Slider is closed
Auto	Lock when Display turns off
Once	One time lock
At Power On	Lock when handset is turned on

- 1 **MENU** or  ➔ **Settings** ➔ In Phone menu, **Locks**



Locks Menu

- 2 **Function Lock**

- 3 **Select item** ➔ **Enter Handset Code** ➔ **OK** or 

Unlocking Temporarily

While handset is locked, enter **Handset Code** ➔ **OK** or 


- Canceling Function Lock cancels Keypad Lock.

When Function Lock is Active

- Turn handset on/off, answer calls, place callers on hold, end calls, etc.

PIN Entry

Activate PIN Entry to require PIN entry each time handset is turned on.

- 1 In Locks menu, **PIN Entry** ➔ **Switch On/Off**
- 2 **On** ➔ Enter PIN ➔ **OK** or 

Secure Remote Lock

Lock a lost handset remotely via PC or another handset. Secure Remote Lock disables all operations except turning handset on, and activates IC Card Lock (P.13-13).

For more about Secure Remote Lock, see SOFTBANK MOBILE Corp. Website (P.19-18) or contact SoftBank Customer Center, General Information (P.19-34).

Accessing My SoftBank

Access My SoftBank as needed.

- 1  or  ➔ **メニューリスト**
- 2 **My SoftBank** ➔ **English**

Advanced

-  Changing PINs  Setting Secure Remote Lock activation message to appear (P.2-36)



Information Security

Application Lock

Restrict access to these functions:

Phone Book

Calendar/Tasks

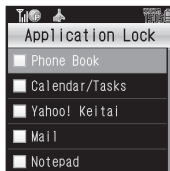
Yahoo! Keitai

Mail

Notepad

1 **MENU** or ➔ **Settings** ➔
In Phone menu, **Locks**

2 **Application Lock**



3 **Select item** (appears) ➔
OK or ➔ **Enter Handset Code** ➔ **OK** or .

- For Phone Book, select whether to show saved names in Call Log, etc.

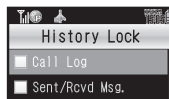
Temporary Access to Functions

- When accessing functions, enter Handset Code and press **OK** or .

History Lock

Restrict access to Call Log and sent/received mail records.

1 In Locks menu, **History Lock**



2 **Select item** (appears) ➔
OK or ➔ **Enter Handset Code** ➔ **OK** or .

Temporary Access to Records

- When accessing records, enter Handset Code and press **OK** or .

Show Secret Data

Activate Show Secret Data to access Secret entries.

1 In Locks menu, **Show Secret Data**

2 **On** ➔ **Enter Handset Code** ➔ **OK** or .

When Show Secret Data is Active

- Predictive is not available for text entry.

Activating Temporarily with Motion Control

1 In Standby, enter Handset Code ➔ **Shake handset left or right**

- Close Slider in Standby; Show Secret Data is canceled when Display goes dark.



Software Update

Check for firmware updates and download as required.

Precautions

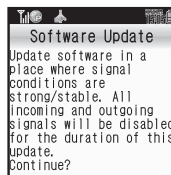
- Always back up important information. SoftBank cannot be held liable for damages from lost information, etc.
- Handset is disabled until update is complete. Update may take up to approximately 30 minutes.
- Update failure may disable handset. To reduce failure risk, make sure signal is strong and stable, and charge battery beforehand.
- Update will not start if other functions are in use. Before updating software (or before scheduled update time), end all active functions/applications.
- Disconnect USB Cable beforehand to reduce failure risk.

Updating Software

- Packet transmission fees do not apply to updates (including checking, downloading and rewriting).
- Use handset keys.

1 ➡ **Settings** ➡ **In Phone menu, Software Update**

2 **Software Update**



- Follow onscreen instructions.

Setting Update Period (Japanese)

In **Update Period**

- Follow onscreen instructions.

Update Result

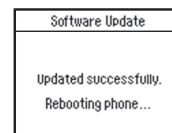
In **Update Result**

Scheduled Update

Confirmation appears at scheduled update time. Press or wait a while for update to start.

When Updated

A message appears and handset reboots.



After reboot, completion message appears and Information window opens.

Update Result

While Information window appears, Update Result

Reboot Failure

- If handset does not return to Standby after update, turn power off, reinsert battery, then restart it. If it still does not restart, contact SoftBank Customer Center, Customer Assistance (P.19-34).

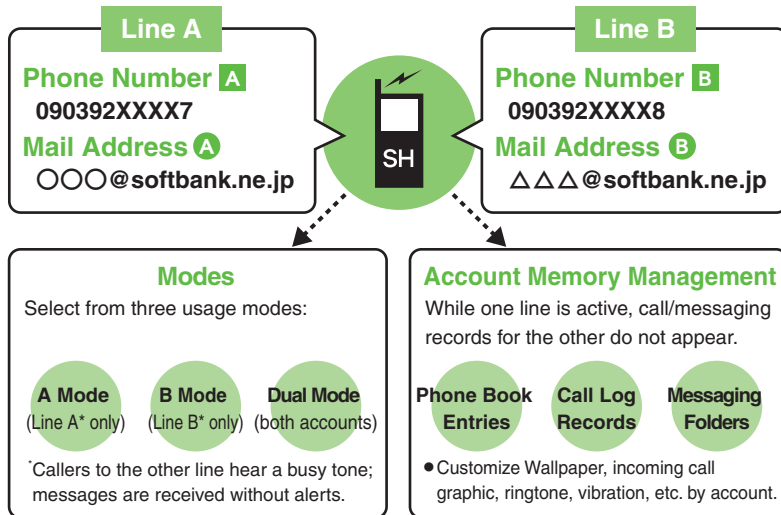


Using Double Number

Manage two accounts (Line A and Line B, with separate phone numbers and mail addresses) on one handset.

- Double Number requires a separate contract and basic monthly fee.
- For more information, see SOFTBANK MOBILE Corp. Website (P.19-18).

Two Phone Numbers & Two Mail Addresses



Activating Double Number

Make sure signal is stable.

- 1 **MENU** or ➔ **Settings**
- 2 In Phone menu, **Double Number Settings**
- 3 **Switch On/Off**
- 4 **On**
- 5 Enter Handset Code ➔ **OK** or ➔ **Yes**

Canceling Double Number

In 4, **Off** ➔ 5

- When Double Number is canceled:
 - Line B calls and SMS messages are redirected to Line A Phone Number.
 - Initial portion of Line B S! Mail is redirected to Line A. (Full messages are irretrievable.)
 - Double Number account is not affected.

Advanced

- Omitting Handset Code entry when switching modes ● Renaming Double Number modes (P.2-37)



Modes

Activate **A Mode** to use Line A only, **B Mode** to use Line B only, or **Dual Mode** to use both accounts. While abroad, any Line B messaging charges are applied to Line A.

A Mode

Receive Calls to Line A Only

- Place calls or send messages via Line A.

A Mode & B Mode Precautions

- Line indicators do not appear in Phone Book entries, message lists, Call Log records, etc.
- When an operation affects information on the other line, a confirmation appears. Follow onscreen prompt(s).

B Mode

Receive Calls to Line B Only

- Place calls or send messages via Line B.

B Mode Restrictions

- Handset connects to the Internet via Line A. (During Internet connections, place/receive calls via Line B.)
- S! Friend's Status, S! Circle Talk and Decoration Call are unavailable.



Advanced



- Showing indicator for calls missed or new mail on idle line
- Hiding Internet connection confirmation (P.2-37)

Dual Mode**Receive Calls to Both Accounts**

- Place calls or send messages via Line A (or the account of record for Phone Book entries or Call Log records) by default; toggle accounts as required.

Phone Book Entries

Specify A, B or Dual.

Messaging



Select Line A or Line B.
Sender Address changes accordingly.

Calling

Select Line A or Line B.
Caller ID changes accordingly.

- ,  and  indicate line type in Phone Book entries, message lists, Call Log records, etc.

Switching Modes

- 1** **MENU** or  ➔ **Settings** ➔ In Phone menu, **Double Number Settings**
- 2** **Double Mode** ➔ **Select mode**
 - For **B Mode** confirmation appears.
- 3** **Enter Handset Code** ➔ **OK** or 
- 4** **Yes**

Saving Modes to Phone Book Entries

- 1** **MENU** or  ➔ **Phone** ➔ **Add New Entry**
- 2** **Mode:** ➔ **Select mode**

Entries Saved with Double Number Canceled

- Dual** is set automatically.

Advanced

-   Rejecting calls to either line in Dual Mode
-  Setting main line for Dual Mode (P.2-37)



Date & Time

Setting the date and time	<i>MENU</i> or ➤ <i>Settings</i> ➤ In Phone menu, <i>Date & Time</i> ➤ <i>Set Date/Time</i> ➤ Enter the year ➤ Enter the month ➤ Enter the day ➤ Enter the time ➤ <i>Accept</i> or
Correcting Clock manually	<i>MENU</i> or ➤ <i>Settings</i> ➤ In Phone menu, <i>Date & Time</i> ➤ <i>Time Correction</i> ➤ <i>Manual</i> ➤ <i>Yes</i> ➤ <i>Yes</i>
Disabling auto Clock correction	<i>MENU</i> or ➤ <i>Settings</i> ➤ In Phone menu, <i>Date & Time</i> ➤ <i>Time Correction</i> ➤ <i>Auto Corr. Setting</i> ➤ <i>Off</i>
Setting auto Clock correction timing	<i>MENU</i> or ➤ <i>Settings</i> ➤ In Phone menu, <i>Date & Time</i> ➤ <i>Time Correction</i> ➤ <i>Auto Corr. Setting</i> ➤ Highlight <i>On</i> ➤ <i>Details</i> or ➤ Select item (➤) ➤ <i>Save</i> or
Activating Daylight Saving	<i>MENU</i> or ➤ <i>Settings</i> ➤ In Phone menu, <i>Date & Time</i> ➤ <i>Daylight Saving</i> ➤ <i>On</i>
Changing Time Zone	<i>MENU</i> or ➤ <i>Settings</i> ➤ In Phone menu, <i>Date & Time</i> ➤ <i>Set Time Zone</i> ➤ Specify area (tap world map to select from list or use to toggle areas) ➤ <i>Accept</i> or
Adding custom time zone	<i>MENU</i> or ➤ <i>Settings</i> ➤ In Phone menu, <i>Date & Time</i> ➤ <i>Set Time Zone</i> ➤ <i>Custom</i> or ➤ Enter city name ➤ <i>Done</i> or ➤ Swipe up/down or ➤ Enter time difference ➤ <i>Accept</i> or • When using handset keys, press before entering time difference.
Changing time format to 12 hour	<i>MENU</i> or ➤ <i>Settings</i> ➤ In Phone menu, <i>Date & Time</i> ➤ <i>Time Format</i> ➤ <i>12 Hour</i>

Changing date format	<i>MENU</i> or ➤ <i>Settings</i> ➤ In Phone menu, <i>Date & Time</i> ➤ <i>Date Format</i> ➤ Select option
Starting the Calendar week on Monday	<i>MENU</i> or ➤ <i>Settings</i> ➤ In Phone menu, <i>Date & Time</i> ➤ <i>Calendar Format</i> ➤ <i>Monday-Sunday</i>

Network

Retrieving Network Information	<i>MENU</i> or ➤ <i>Settings</i> ➤ Highlight <i>Network</i> tab ➤ <i>Retrieve NW Info</i> ➤ <i>Yes</i>
Selecting a Network manually	<i>MENU</i> or ➤ <i>Settings</i> ➤ Highlight <i>Network</i> tab ➤ <i>Select Network</i> ➤ <i>Manual</i> ➤ Select Network
Editing preferred Networks	<i>MENU</i> or ➤ <i>Settings</i> ➤ Highlight <i>Network</i> tab ➤ <i>Select Network</i> ➤ <i>Set Preferred</i> ➤ See below
	Adding Select location ➤ <i>Insert</i> ➤ Select Network
	Adding to the End Select Network ➤ <i>Add to End</i> ➤ Select Network
	Deleting Select Network ➤ <i>Delete</i>



Adding Networks	<p>Start Here MENU or ➔ Settings ➔ Highlight Network tab ➔ Select Network ➔ Add New Network ➔ See below</p> <p>Adding Add ➔ Enter country code ➔ OK or ➔ Enter Network code ➔ OK or ➔ Enter name ➔ Done or ➔ Select NW Type ➔ Select type</p> <ul style="list-style-type: none"> After selecting Add New Network, Network list appears if Network has already been added. To add more, press again and proceed.
	<p>Editing Added Networks Select Network ➔ Change ➔ Edit in the same manner as adding Networks</p> <p>Deleting Added Networks Select Network ➔ Delete</p>
Switching Network services manually	MENU or ➔ Settings ➔ Highlight Network tab ➔ Select Service ➔ Manual ➔ Select service
Checking Network status	MENU or ➔ Settings ➔ Highlight Network tab ➔ Network Info
Editing access point names for communication with external devices	<p>Start Here MENU or ➔ Settings ➔ Highlight Network tab ➔ External Device ➔ See below</p> <p>Renaming Access Points Select name ➔ Edit ➔ Done or </p> <p>Clearing Access Point Names Options or ➔ Reset ➔ Enter Handset Code ➔ OK or ➔ Yes</p>

Keypad Lock

Disabling Keypad Lock activation when Display turns off	MENU or ➔ Settings ➔ In Phone menu, Touch Panel ➔ Keypad Lock ➔ Press key
Setting Keypad Lock to activate upon Slider close	MENU or ➔ Settings ➔ In Phone menu, Touch Panel ➔ Keypad Lock ➔ Close Slider

Information

Handling Information list	<p>Start Here MENU or ➔ Phone ➔ See below</p> <p>Opening List Manually Information</p> <p>Clearing List Information ➔ Clear or ➔ Yes</p>

Touch Panel

Adjusting Touch vibration	<p>Start Here MENU or ➔ Settings ➔ In Phone menu, Touch Panel ➔ Touch Reaction ➔ See below</p> <p>Touch Vibration Always On (Vibrating)</p> <p>Touch Vibration Off in Manner Mode On (Except Manner Mode)</p>

Shortcuts

Restoring default shortcuts	(Long) or ➔ Shortcut Settings ➔ Options or ➔ Set to Default ➔ Yes
-----------------------------	---



Sheets

Editing sheet names	[Start Here] Long Touch blank area in Standby (no Softkeys, icons or widgets) ➔ <i>Change Sheet Name</i> ➔ See below
	Renaming Select sheet ➔ Enter name ➔ Done or ●
	Resetting All Sheet Names Reset or [✉] ➔ Yes
Locking sheets	[Start Here] Long Touch blank area in Standby (no Softkeys, icons or widgets) ➔ <i>Set Sheet Lock</i> ➔ Enter Handset Code ➔ OK or ● ➔ See below
	Activating Lock Select sheet ➔ On or ●
	Changing Method for Temporary Access <i>Unlock Method</i> ➔ Action ➔ OK or ● • Swipe a finger down across [🔒] to unlock sheet temporarily.

Motion Control

Locking Display in portrait view	<i>MENU</i> or ● ➔ <i>Settings</i> ➔ In Phone menu, <i>Motion Control</i> ➔ <i>Display Change</i> ➔ Normal
Setting Display rotation to Auto	<i>MENU</i> or ● ➔ <i>Settings</i> ➔ In Phone menu, <i>Motion Control</i> ➔ <i>Display Change</i> ➔ Auto
Changing Quick Shortcut items	<i>MENU</i> or ● ➔ <i>Settings</i> ➔ In Phone menu, <i>Motion Control</i> ➔ <i>Quick Shortcut</i> ➔ <i>Shortcut Entry</i> ➔ <i>Portrait</i> or <i>Landscape</i> ➔ Select menu item ➔ Select new item

Practicing Motion Control actions

MENU or ● ➔ *Settings* ➔ In Phone menu, *Motion Control* ➔ *Action Test* ➔ Select item
• Follow onscreen instructions.

Adjusting Motion Control sensor

MENU or ● ➔ *Settings* ➔ In Phone menu, *Motion Control* ➔ *Adjust Sensor*
• Follow onscreen instructions. (Keypad Lock activation interrupts calibration.)
• Avoid adjusting sensor near metal/magnetic objects or aboard trains or in vehicles.

Mode

Changing handset modes	[Start Here] <i>MENU</i> or ● ➔ <i>Settings</i> ➔ In Phone menu, <i>Mode Settings</i> ➔ See below
	Selecting a Handset Mode Select mode
	Customizing Handset Modes Highlight mode ➔ Edit or [✉] ➔ Select item ➔ Adjust settings • Not available for Normal mode.
Creating a custom mode	<i>MENU</i> or ● ➔ <i>Settings</i> ➔ In Phone menu, <i>Mode Settings</i> ➔ Highlight <i>Original</i> ➔ Edit or [✉] ➔ Select item ➔ Adjust settings
Resetting Mode Settings	<i>MENU</i> or ● ➔ <i>Settings</i> ➔ In Phone menu, <i>Mode Settings</i> ➔ Highlight mode ➔ Reset or [Y] ➔ Enter Handset Code ➔ OK or ● ➔ Yes



Language	
Switching interface between Japanese and English	<i>MENU</i> or \rightarrow <i>Settings</i> \rightarrow In Phone menu, <i>Language</i> or 言語選択 \rightarrow <i>English</i> or 日本語
Display	
Changing battery strength indicator pattern	<i>MENU</i> or \rightarrow <i>Settings</i> \rightarrow In Phone menu, <i>Display</i> \rightarrow <i>Mini Battery</i> \rightarrow Select pattern <ul style="list-style-type: none"> • <i>Remaining time</i> is approximated for current handset usage pattern. <ul style="list-style-type: none"> ■ Remaining time is hidden while charging.
Disabling display transition effects	<i>MENU</i> or \rightarrow <i>Settings</i> \rightarrow In Phone menu, <i>Display</i> \rightarrow <i>Display Effects</i> \rightarrow <i>Off</i>
Changing Clock/Calendar	<i>MENU</i> or \rightarrow <i>Settings</i> \rightarrow In Phone menu, <i>Display</i> \rightarrow <i>Standby Display</i> \rightarrow <i>Clock/Calendar</i> \rightarrow Select type
Changing image enhancement option for Standby and video playback	<i>MENU</i> or \rightarrow <i>Settings</i> \rightarrow In Phone menu, <i>Display</i> \rightarrow <i>Vivid Mode</i> \rightarrow Select option
Showing Network service provider name in Standby	<i>MENU</i> or \rightarrow <i>Settings</i> \rightarrow In Phone menu, <i>Display</i> \rightarrow <i>Standby Display</i> \rightarrow <i>Show Operator Name</i> \rightarrow <i>On</i>
Showing a message each time handset is turned on	<i>MENU</i> or \rightarrow <i>Settings</i> \rightarrow In Phone menu, <i>Display</i> \rightarrow <i>Greeting Message</i> \rightarrow <i>Edit Message</i> \rightarrow Enter message \rightarrow <i>Done</i> or \rightarrow <i>Switch On/Off</i> \rightarrow <i>On</i>

Changing font of numbers entered in Standby	<i>MENU</i> or \rightarrow <i>Settings</i> \rightarrow In Phone menu, <i>Display</i> \rightarrow <i>Dial Number</i> \rightarrow Select pattern
Customized Screen	
Accessing Customized Screen source sites	<i>MENU</i> or \rightarrow <i>Data Folder</i> \rightarrow <i>Customized Screen</i> \rightarrow Highlight Customized Screen \rightarrow <i>Options</i> or \rightarrow <i>Web Access</i> <ul style="list-style-type: none"> • Follow onscreen instructions.
Applying preset Customized Screen	<i>MENU</i> or \rightarrow <i>Customize</i> or \rightarrow <i>Preset Screens</i> \rightarrow Select pattern \rightarrow <i>Apply</i> or
Canceling Customized Screen	<i>MENU</i> or \rightarrow <i>Customize</i> or \rightarrow <i>Off</i> \rightarrow <i>Yes</i>
Canceling Customized Screen unconditionally	(Long) or \rightarrow <i>Menu List</i> \rightarrow <i>Settings</i> \rightarrow In Phone menu, <i>Customized Screen</i> \rightarrow <i>Off</i> \rightarrow <i>Yes</i>
Deleting Customized Screens	<i>MENU</i> or \rightarrow <i>Data Folder</i> \rightarrow <i>Customized Screen</i> \rightarrow Highlight Customized Screen \rightarrow <i>Options</i> or \rightarrow <i>Delete</i> \rightarrow <i>Yes</i> <ul style="list-style-type: none"> • When the corresponding Contents Key has been downloaded, select <i>Yes</i> or <i>No</i>.



Sounds & Alerts

■ System Sound

Disabling System Sounds	<i>MENU</i> or <i>Settings</i> <i>In Phone menu, Sounds & Alerts</i> <i>System Sounds</i> <i>Select item</i> <i>Tone</i> <i>Off</i> • Not available for <i>S! Circle Talk</i> .
Changing System Sound duration	<i>MENU</i> or <i>Settings</i> <i>In Phone menu, Sounds & Alerts</i> <i>System Sounds</i> <i>Select item</i> <i>Duration</i> <i>Highlight/enter time</i> / <i>Accept</i> or • Not available for <i>Keypad Tones</i> or <i>S! Circle Talk</i> .
Changing System Sound volume	<i>MENU</i> or <i>Settings</i> <i>In Phone menu, Sounds & Alerts</i> <i>Volume</i> <i>General Volume</i> <i>Adjust level</i> <i>Accept</i> or
Enabling Keypad Tones	<i>MENU</i> or <i>Settings</i> <i>In Phone menu, Sounds & Alerts</i> <i>System Sounds</i> <i>Keypad Tones</i> <i>Select tone</i>
Activating/canceling Speaker surround	<i>MENU</i> or <i>Settings</i> <i>In Phone menu, Sounds & Alerts</i> <i>Surround</i> <i>On</i>

■ Light & Illumination

Setting illumination for missed incoming transmissions	<i>[Start Here]</i> <i>MENU</i> or <i>Settings</i> <i>In Phone menu, Sounds & Alerts</i> <i>Status Light</i> <i>Select item</i> <i>See below</i> <i>Enabling/Disabling</i> <i>Switch On/Off</i> <i>On or Off</i> <i>Setting Color</i> <i>Light Color</i> <i>Select color</i>
Setting illumination for incoming transmissions	<i>[Start Here]</i> <i>MENU</i> or <i>Settings</i> <i>In Phone menu, Sounds & Alerts</i> <i>Event Light</i> <i>See below</i> <i>Enabling/Disabling</i> <i>Select item</i> <i>Switch On/Off</i> <i>On, Link to Sound or Off</i> • When using Double Number in Dual Mode (P.2-27), press or in Event Light menu to switch modes. <i>Setting Color</i> <i>Select item</i> <i>Light Color</i> <i>Select color</i> • When using Double Number in Dual Mode, press or in Event Light menu to switch modes.
Changing Display/Keypad Backlight illumination time	<i>MENU</i> or <i>Settings</i> <i>In Phone menu, Display</i> <i>Backlight</i> <i>Time Out</i> <i>Select time</i>



Changing Display Brightness	[Start Here] MENU or Settings In Phone menu, Display Backlight See below
	Adjusting Directly Brightness Adjust level Accept or
	Canceling Light Sensor Brightness Uncheck or Accept or
Changing inactivity time after which Display turns off	MENU or Settings In Phone menu, Display Display Saving Select period
Disabling Keypad light illumination	MENU or Settings In Phone menu, Set Key Light Off
Changing inactivity time with Slider closed after which Display Backlight and Display turn off	MENU or Settings In Phone menu, Display CLS Disp. Time Select option
Specifying Backlight inactive period with Slider closed	MENU or Settings In Phone menu, Display Display Manner Lights out period At Start Time: or At End Time: Enter time Accept or Save or Switch On/Off On

Handset Response

Selecting images that appear for incoming calls, etc.	[Start Here] MENU or Settings In Phone menu, Display System Graphics Select item See below
	Preset Images Preset Animation (or select pattern)
	Data Folder Images Select folder Highlight image Assign or Specify display area Assign or <ul style="list-style-type: none"> Some images may be usable without specifying display area. When using Double Number in Dual Mode (P.2-27), press or in System Graphics menu to switch modes.
	Customized Screens Customized Screen Assign or <ul style="list-style-type: none"> Not available for Power On or Power Off. When using Double Number in Dual Mode, press or in System Graphics menu to switch modes.
Hiding caller info when Slider is closed	MENU or Settings In Phone menu, Display Caller Display Off
Answering calls with other keys	MENU or Settings In Phone menu, Sounds & Alerts Any Key Answer On <ul style="list-style-type: none"> Use - , , , , or in addition to .
Muting ringer with other keys	MENU or Settings In Phone menu, Sounds & Alerts Any Key Answer Only Mute <ul style="list-style-type: none"> Use - , , , , or in addition to .



Disabling Speaker when using Headphones

MENU or ➔ **Settings** ➔ In Phone menu, **Ringer Output** ➔ **Earphone**

My Details

Editing/clearing My Details

(Start Here) **MENU** or ➔ **Phone** ➔ **My Details** ➔ See below

Editing My Details

Highlight tab/item ➔ **Edit** or ➔ Select item ➔ **Edit** ➔ **Save** or

Clearing My Details

Options or ➔ **Reset My Details** ➔ **Yes**

Toggling My Details in Dual Mode

MENU or ➔ **Phone** ➔ **My Details** ➔ **Options** or ➔ **Switch to B** or **Switch to A**

Handset Security

Changing PINs

(Start Here) **MENU** or ➔ **Settings** ➔ In Phone menu, **Locks** ➔ See below

Changing PIN

PIN Entry ➔ **Change PIN** ➔ Enter current PIN ➔ **OK** or ➔ Enter new PIN ➔ **OK** or ➔ Re-enter new PIN ➔ **OK** or

- Activate PIN Entry first.

Changing PIN2

Change PIN2 ➔ Enter current PIN2 ➔ **OK** or ➔ Enter new PIN2 ➔ **OK** or ➔ Re-enter new PIN2 ➔ **OK** or

Disabling IP Service

MENU or ➔ **Settings** ➔ In Phone menu, **Locks** ➔ **IP Service Setting** ➔ **Off** ➔ Enter Handset Code ➔ **OK** or

- When **Off**, S! Friend's Status, S! Circle Talk, Decoration Call and S! Appli Notification Setting are disabled.

Setting Secure Remote Lock activation message to appear

(Start Here) **MENU** or ➔ **Settings** ➔ In Phone menu, **Locks** ➔ **Set Lock Message** ➔ See below

Saving Message

Message ➔ Enter Handset Code ➔ **OK** or ➔ Enter message ➔ **Done** or ➔ **Yes**

Checking Message

Check Message

VeilView

Changing VeilView pattern/density

(Start Here) **MENU** or ➔ **Settings** ➔ In Phone menu, **Display** ➔ **VeilView** ➔ See below

Pattern

Pattern Setting ➔ Select pattern ➔ Select scale or **animation**

Density

Density Setting ➔ Select density

USB Charge

Disabling USB Charge

MENU or ➔ **Settings** ➔ Highlight **Connectivity** tab ➔ **USB Charge** ➔ **Disable**



Double Number

■ All Modes

Omitting Handset Code entry when switching modes	<i>MENU</i> or → <i>Settings</i> → In Phone menu, <i>Double Number Settings</i> → <i>Password Entry</i> → <i>Off</i> → Enter Handset Code → <i>OK</i> or
Renaming Double Number modes	<i>MENU</i> or → <i>Settings</i> → In Phone menu, <i>Double Number Settings</i> → <i>Mode Name</i> → Select mode → Enter name → <i>Done</i> or → Select icon

■ A Mode & B Mode

Showing indicator for calls missed or new mail on idle line	<i>MENU</i> or → <i>Settings</i> → In Phone menu, <i>Double Number Settings</i> → <i>Show Missed</i> → <i>On</i>
Hiding Internet connection confirmation	<i>MENU</i> or → <i>Settings</i> → In Phone menu, <i>Double Number Settings</i> → <i>Packet Warning</i> → <i>Off</i> • Available for B Mode.

■ Dual Mode

Rejecting calls to either line in Dual Mode	<i>MENU</i> or → <i>Settings</i> → In Phone menu, <i>Double Number Settings</i> → <i>Reject By Line</i> → Select line → <i>On</i>
Setting main line for Dual Mode	<i>MENU</i> or → <i>Settings</i> → In Phone menu, <i>Double Number Settings</i> → <i>Send Priority</i> → Select option

Reset

Restoring default handset settings	<p><i>MENU</i> or → <i>Settings</i> → In Phone menu, <i>Master Reset</i> → <i>Reset Settings</i> → Enter Handset Code → <i>OK</i> or → <i>Yes</i> → <i>Yes</i></p> <ul style="list-style-type: none"> • Some default settings may not be restored. • A confirmation may appear before entering Handset Code; end the current function to proceed. • When Double Number is active, regardless of usage mode setting, Reset Settings restores all default settings (Double Number is canceled), and Reset All clears all user files.
Clearing all Phone Book entries, Data Folder files, etc.	<p><i>MENU</i> or → <i>Settings</i> → In Phone menu, <i>Master Reset</i> → <i>Reset All</i> → Enter Handset Code → <i>OK</i> or → <i>Yes</i> → <i>Yes</i></p> <ul style="list-style-type: none"> • Delete IC Card data beforehand. (Procedures to delete IC Card data vary by Lifestyle-App; contact Osaifu-Keitai® service providers for details.) • Files and records deleted by Reset All cannot be restored. Reset All deletes all downloaded S! Applications and Lifestyle-Applications. • Handset Code returns to the default setting. • A confirmation may appear before entering Handset Code; end the current function to proceed. • When Double Number is active, regardless of usage mode setting, Reset Settings restores all default settings (Double Number is canceled), and Reset All clears all user files.



Battery Meter



--- appears

- Calculating time; not a malfunction.



100% does not appear

- This is by design; not a malfunction.



Battery runs out faster

- A low ambient temperature reduces battery time.
- An older battery may run out faster.



Remaining time changes suddenly

- Time estimated by handset status; estimate may take time to appear.

Customized Screen



Customized Screen is not applied

- Some Customized Screens may not contain files for Wallpaper, System Graphics, ringtones or ringvideos; default settings apply for these functions.

USB Charge



Connecting handset to PC via USB Cable does not charge battery even when USB Charge is enabled

- Are PC and handset both on? USB Charge is not available if off.

