



102SH/102SHII User Guide

102SH/102SHII User Guide Contents

Introduction	3
Getting Started	
Package Contents	6
Parts & Functions	6
About USIM Card	7
SD Card	9
Battery Installation	12
Charging Battery	14
Handset Power On/Off	15
Using Touch Panel	16
Basic Operations	
Handset Interface	20
Applications	21
My Phone Number	22
Manner Mode & Offline Mode	23
Text Entry	24
Using Google Accounts	26
Google Play™	27
Security Codes	29
USIM PIN	30
Sleep Mode	31
Software Update	31
Handset Interface	
Home Screen Basics	34
Launcher Basics	35
Status Bar	36
Notifications Panel	37
Customizing Home Screen	38
Phone	
Placing/Answering Calls	42
Optional Services	43
Using Address Book	48
Messaging & Browser	
Mail Types	52
Sending SI Mail/SMS	52
Receiving & Replying SI Mail/SMS	54
Handling SI Mail/SMS	56
Creating/Sending Gmail	56
Opening Received Gmail	57
Using Email	58
Browsing the Internet	60
Camera	
Photo Camera	64
Video Camera	65
Capturing 3D Images	67
Music & Images	
Music	70

Still Images & Video.....	70
---------------------------	----

Connectivity

Connecting to Wi-Fi.....	72
Using Bluetooth®.....	75

Global Services

Global Roaming.....	80
Calling from Outside Japan.....	81

Settings

Wireless & Network Settings.....	84
Sound Settings.....	86
Application Settings.....	87
Accounts & Sync Settings.....	89
Privacy Setting.....	89
Language & Keyboard Settings.....	90
Date & Time Settings.....	91
About Phone.....	92

Appendix

Specifications.....	96
Customer Service.....	97

Safety Precautions

Safety Precautions.....	100
Important Product Information.....	107
Handset & Hardware Care.....	109
General Notes.....	110
FCC Notice.....	112
Specific Absorption Rate (SAR).....	113
Water & Dust Resistance.....	113

Introduction

Thank you for purchasing SoftBank 102SH/102SHII.

Before You Begin

For proper handset use, read "Quick Tips" (in お問い合わせ) and this guide beforehand.

- Accessible SoftBank Mobile services may vary by subscription, etc.
- SoftBank 102SH and 102SHII are compatible with 3G and GSM network technologies.

SoftBank 102SH & 102SHII

This guide is for SoftBank 102SH and 102SHII. Operation descriptions are for both models unless specified by model name.

Guide Usage Notes

- Most operation descriptions are based on default settings.
- Unless noted otherwise, descriptions are for Home Screen.
- Some operation descriptions may be omitted.
- In this guide and on handset, "abroad" means "outside Japan" with regard to handset/service usage.
- In this guide, microSDHC/microSD Card is referred to as "SD Card."

Screenshots & Key Labels

Actual handset windows, menus, etc. may differ in appearance. Key labels are simplified for reference convenience. Sample screenshots are mostly based on SoftBank 102SH.

Accessing Guide on Handset

Access this Guide on handset via Guide icon in Home Screen or via Guide indicator on Status Bar. Guide indicator appears on Status Bar by default. Follow these steps to hide Guide indicator:

Access Guide →  → Indicator →  → 

- Guide usage information and confirmation for automatic updates appear at initial startup.

Getting Started

- Package Contents..... 6
- Parts & Functions..... 6
- About USIM Card..... 7
- SD Card..... 9
- Battery Installation..... 12
- Charging Battery..... 14
- Handset Power On/Off..... 15
- Using Touch Panel..... 16

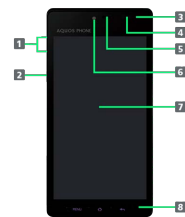
Package Contents

Package Contents

- Handset (SoftBank 102SH/102SHII)
- Battery (SHBED1)
- Micro USB Cable (SHDDL1)
- Micro USB Charging Adapter (SHCDL1)
- Desktop Holder (SHEED1)
- microSDHC Card (complimentary sample)
- クイックスタート (Japanese)
- お願いとご注意 (Japanese) with English "Quick Tips"
- Warranties (Japanese) for handset and Micro USB Charging Adapter

Parts & Functions

Handset Parts

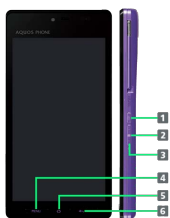


Name	Description
1 Charging Terminals (for Desktop Holder)	For use with Desktop Holder
2 External Connector Port	Connect AC Charger or Micro USB Cable here
3 Notification Lamp	Illuminates while charging or for incoming calls, new messages, etc.
4 Proximity/Light Sensor	Detects ambient light level, etc.
5 Earpiece	Hear other party's voice through this
6 Internal Camera	Capture photos or record video
7 Display	Touch Display to navigate menus, open functions, scroll pages, etc.
8 Microphone	Talk to other party through this



Name	Description
1 External Camera	Capture photos or record video
2 Mobile Light	Use as a flashlight or camera flash
3 TV Antenna (Retractable)	Extend for One Seg reception
4 FeliCa Logo	Place over reader/writer to use Osaifu-Keitai®
5 Battery Cover	Open for inserting/removing battery and USIM Card
6 Headphone Jack	Connect specified Headphones with Microphone here
7 Infrared Port	Transfer files via infrared
8 Speaker	Listen to music, video/One Seg audio, etc. through this
9 Strap Eyelet	Attach straps here

Handset Keys



Name	Description
1 (Power Key)	Activate/cancel Sleep mode. Long Press for Power on or Phone options.
2 (Volume Up Key)	Increase volume
3 (Volume Down Key)	Decrease volume. Long Press to activate/cancel Manner mode
4 (MENU Key)	Open Options menu
5 (Home Key)	Return to Home Screen; cancel Sleep mode; answer calls. Long Press for active applications.
6 (Back Key)	Go back/escape

About USIM Card

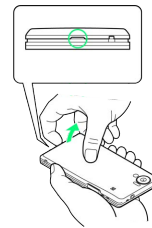
USIM Card is an IC card containing customer and authentication information, including handset number.

Inserting USIM Card

Power off first.

1

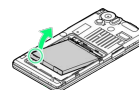
Remove Battery Cover



- Hold handset in one hand; with your other hand, use notch below Display to gently remove Battery Cover.

2

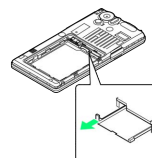
Remove battery



- Use tab (○) to lift battery.

3

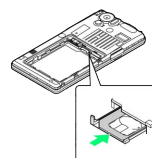
Pull out Tray



- Use tab to gently pull out Tray until it is about halfway exposed as shown above.
- Tray is not removable; applying excessive force may damage Tray.

4

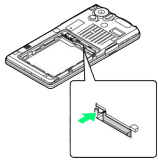
Place USIM Card in Tray with IC chip up



- Slide in Tray.

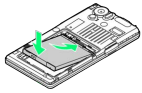
5

Secure Tray



6

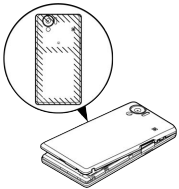
Insert battery



- With recycling symbol up, align battery terminals with contacts.

7

Replace Battery Cover



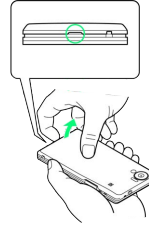
- Align Battery Cover with handset, then firmly press down along shaded areas.
- Close Battery Cover firmly. Debris trapped between Cover and battery housing gasket may expose handset to liquid/dust.

Removing USIM Card

Power off first.

1

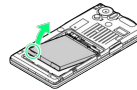
Remove Battery Cover



- Hold handset in one hand; with your other hand, use notch below Display to gently remove Battery Cover.

2

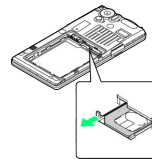
Remove battery



- Use tab (○) to lift battery.

3

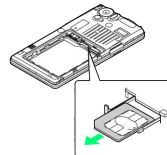
Pull out Tray



- Use tab to gently pull out Tray until it is about halfway exposed as shown above.
- Tray is not removable; applying excessive force may damage Tray.

4

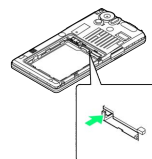
Remove USIM Card



- Slide out USIM Card.

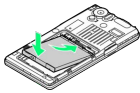
5

Secure Tray



6

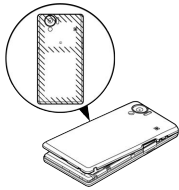
Insert battery



- With recycling symbol up, align battery terminals with contacts.

7

Replace Battery Cover



- Align Battery Cover with handset, then firmly press down along shaded areas.
- Close Battery Cover firmly. Debris trapped between Cover and battery housing gasket may expose handset to liquid/dust.

SD Card

Handset supports SD Card up to 32 GB. However, some SD Cards may not operate properly.

Unmounting SD Card

Always perform Unmount microSD before removing SD Card. (Complimentary SD Card preinstalled.)

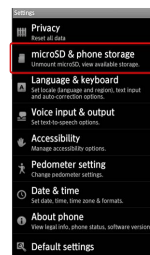
1

In Home Screen, **MENU** → **Settings**



2


microSD & phone storage



3

Unmount microSD → **OK**



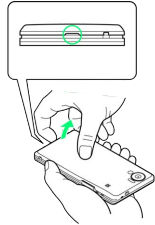
 SD Card is unmounted.

Removing SD Card

Before removing SD Card, always perform Unmount microSD, then power off.

1

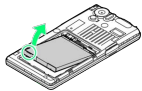
Remove Battery Cover



- Hold handset in one hand; with your other hand, use notch below Display to gently remove Battery Cover.

2

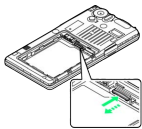
Remove battery



- Use tab (○) to lift battery.

3

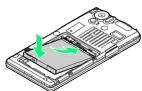
Remove SD Card



- Gently push in card and release it; card pops out. Carefully remove card without bending it.

4

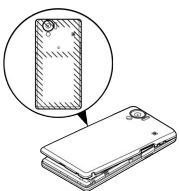
Insert battery



- With recycling symbol up, align battery terminals with contacts.

5

Replace Battery Cover



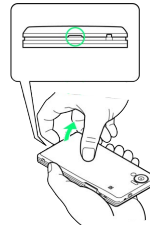
- Align Battery Cover with handset, then firmly press down along shaded areas.
- Close Battery Cover firmly. Debris trapped between Cover and battery housing gasket may expose handset to liquid/dust.

Inserting SD Card

Power off first.

1

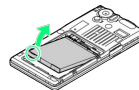
Remove Battery Cover



- Hold handset in one hand; with your other hand, use notch below Display to gently remove Battery Cover.

2

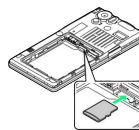
Remove battery



- Use tab (○) to lift battery.

3

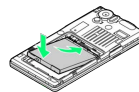
Insert SD Card



- With terminals down, insert SD Card until it stops.
- Do not insert other objects.

4

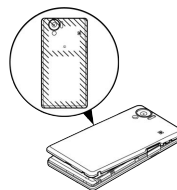
Insert battery



- With recycling symbol up, align battery terminals with contacts.

5

Replace Battery Cover



- Align Battery Cover with handset, then firmly press down along shaded areas.
- Close Battery Cover firmly. Debris trapped between Cover and battery housing gasket may expose handset to liquid/dust.

Formatting SD Card

When using a new SD Card for the first time, format it on handset before trying to save files, etc.

- Formatting deletes all SD Card files.
- Charge battery or install a charged battery beforehand.

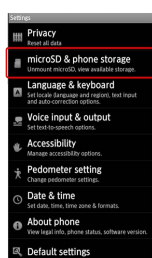
1

In Home Screen, **MENU** → **Settings**



2

microSD & phone storage



3

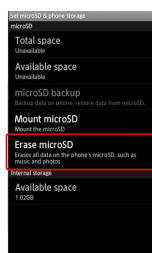
Unmount microSD → **OK**



Unmount microSD changes to **Mount microSD**.

4

Erase microSD



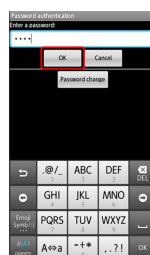
5

Erase microSD



6

Enter Handset Code → **OK**



- If Handset Code is unset, follow onscreen instructions.

7

Erase everything



Formatting starts.

- When finished, SD Card is mounted.

Complimentary Sample microSDHC Card

Complimentary SD Card is preinstalled.

- Warranty does not cover complimentary sample microSDHC Card.

Important SD Card Usage Note

SD Card files may be lost/alterd accidentally. Keep a copy of contacts, etc. in a separate place. SoftBank Mobile is not liable for any damages resulting from accidental loss/alteration of information.

- Never power off or remove battery while files are being accessed.

General Use

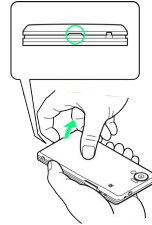
Keep SD Card out of infants' reach; may cause suffocation if swallowed.

Battery Installation

Inserting Battery

1

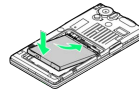
Remove Battery Cover



- Hold handset in one hand; with your other hand, use notch below Display to gently remove Battery Cover.

2

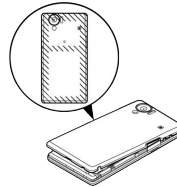
Insert battery



- With recycling symbol up, align battery terminals with contacts.

3

Replace Battery Cover



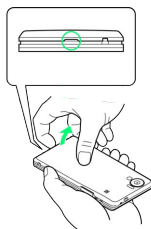
- Align Battery Cover with handset, then firmly press down along shaded areas.
- Close Battery Cover firmly. Debris trapped between Cover and battery housing gasket may expose handset to liquid/dust.

Removing Battery

Power off first.

1

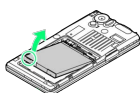
Remove Battery Cover



- Hold handset in one hand; with your other hand, use notch below Display to gently remove Battery Cover.

2

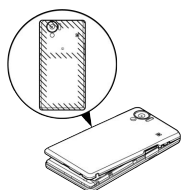
Remove battery



- Use tab (○) to lift battery.

3

Replace Battery Cover



- Align Battery Cover with handset, then firmly press down along shaded areas.
- Close Battery Cover firmly. Debris trapped between Cover and battery housing gasket may expose handset to liquid/dust.



Lithium-ion Battery

This product requires a lithium-ion battery. Lithium-ion batteries are recyclable. To recycle a used lithium-ion battery, take it to any shop displaying the symbol below.

- To avoid fire or electric shock, do not short-circuit or disassemble battery.



Li-ion00

Battery Usage Notes

General

Charge battery at least once every six months; uncharged battery may die or affect files/settings.

Replacement

Replace battery if operating time shortens noticeably.

Bulges

Depending on usage, bulges may appear near end of battery life; this does not affect safety.

Cleaning

Clean device charging terminals with dry cotton swabs.

Battery Cover

To maintain water/dust resistance, close Battery Cover properly. Do not apply excessive force to Battery Cover; damage may result.

- If Battery Cover is damaged, replace it with a new one. Use of damaged Cover may cause electric shock, battery corrosion, etc. due to water seepage. (Battery is not water or dustproofed.)

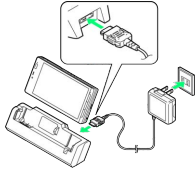
Charging Battery

Battery must be inserted in handset to charge it.

Desktop Holder

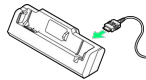
Use Desktop Holder with AC Charger ZTDAA1 (sold separately).

- AC Charger and Desktop Holder are not water or dustproofed. Do not charge battery while handset is wet.
- Handset/AC Charger may warm while charging.



1

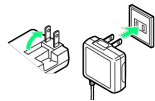
Insert Charger Connector into Desktop Holder



- Insert connector in the correct orientation until it clicks.

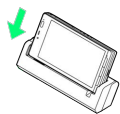
2

Extend blades and plug AC Charger into AC outlet



3

Align handset with guides, then push down until it clicks into place



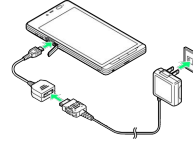
 Notification Lamp illuminates while charging.

- Do not let straps, etc. get caught between handset and Desktop Holder.
- Notification Lamp goes out when battery is full. Remove handset then Charger Connector from Desktop Holder, then unplug AC Charger and retract blades.

AC Charger

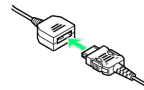
Use Micro USB Charging Adapter with AC Charger ZTDAA1 (sold separately).

- AC Charger and Micro USB Charging Adapter are not water or dustproofed. Do not charge battery while handset is wet.



1

Insert Charger Connector into Micro USB Charging Adapter



- Confirm connector orientation, then insert connector until it clicks.

2

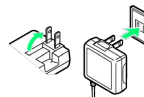
Open Port Cover and insert Micro USB Charging Adapter into External Connector Port




- Use notch above Port Cover to open it. Placing a finger inside Port Cover, gently fold it back using the rubber hinge. Pulling/Twisting open Port Cover may damage hinge.

3

Extend blades and plug AC Charger into AC outlet



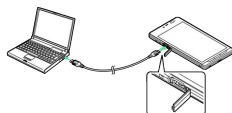
 Notification Lamp illuminates while charging.

- Notification Lamp goes out when battery is full. Unplug AC Charger and retract blades. Remove Micro USB Charging Adapter and close Port Cover.

USB Charge

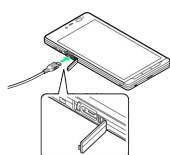
Connect handset to a PC via Micro USB Cable.

- Power on handset and PC first.
- To use Fast transfer mode, install USB Cable driver on the PC beforehand.
- Battery may not charge or charge slowly depending on PC status/environment. Battery may not charge if SD Card is not inserted.



1

Open Port Cover and insert Micro USB Cable into External Connector Port



- Use notch above Port Cover to open it. Placing a finger inside Port Cover, gently fold it back using the rubber hinge. Pulling/Twisting open Port Cover may damage hinge.

2

Insert Micro USB Cable into PC USB port



Notification Lamp illuminates while charging.

- Notification Lamp goes out when battery is full. Remove Micro USB Cable and close Port Cover.

Charging Precautions

Handling Cords

Do not pull, bend, or twist cord.

Handling External Connector Port Cover

Remember these points:

- Close Port Cover firmly. Debris trapped between gasket and base may expose handset to liquid/dust.
- Do not try to close Port Cover with hinge extended; may deform Cover and affect water/dust resistance.

Important USB Charge Usage Note

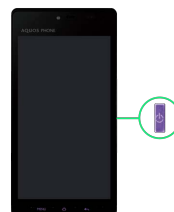
Handset may power on automatically when connected to a PC via Micro USB Cable; avoid connection aboard aircraft or in hospitals, etc. where handset use is prohibited.

Handset Power On/Off

Power On

1

Long Press  until SoftBank logo appears

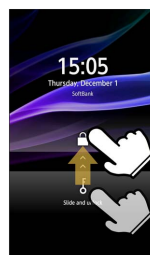


After Power On Graphics, Unlock window appears.

- When powering on for the first time, waterproofing/dustproofing guidance appears. (Unlock window does not appear first.)

2

Drag  to 



Waterproofing/dustproofing guidance appears.

3

OK




Initial setup menu opens.

- If handset is set to skip setup menu at Power on, Home Screen appears.

Power Off

1

 (Long)



2


Power off



3

OK



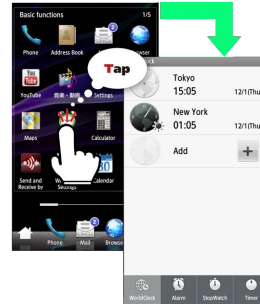
 Handset shuts down.

Using Touch Panel

Touch Display to navigate menus, open functions, scroll pages, etc.

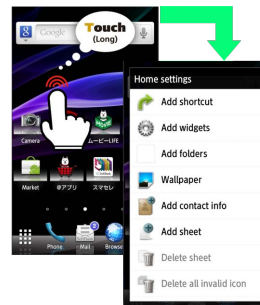
Tap

Tap item or key to open or execute corresponding function/operation.



Long Touch

Touch item for 1+ seconds (handset vibrates) to move icon, open menu, etc.



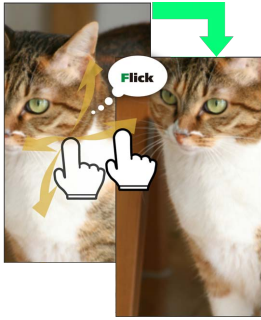
Drag

Drag item to move it.



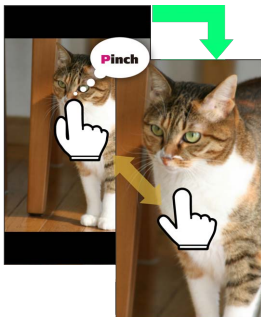
Swipe/Flick

Swipe or flick to toggle sheets, pages, etc.



Spread & Pinch

Spread or pinch to enlarge or reduce images, etc.



+ Calibrating Touch Panel

Calibrate Touch Panel to improve response. Hold handset normally during calibration.

In Home Screen, [MENU](#) → [Settings](#) → [About phone](#)
 → [Adjust touch panel](#) → Tap center of each circle

Basic Operations

- Handset Interface.....20
- Applications.....21
- My Phone Number.....22
- Manner Mode & Offline Mode.....23
- Text Entry.....24
- Using Google Accounts.....26
- Google Play™.....27
- Security Codes.....29
- USIM PIN.....30
- Sleep Mode.....31
- Software Update.....31

Handset Interface

Home Screen & Launcher

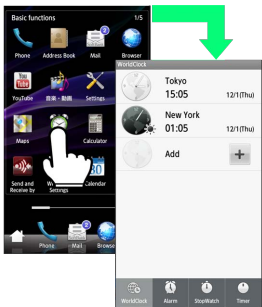
Perform most operations from Home Screen or Launcher.



Selection & Execution

Tap (select/execute) item, icon, key, etc. to open or execute corresponding function/operation.

- Press to return to previous window.

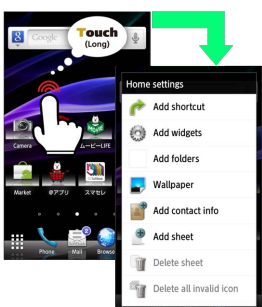


Options Menu Operations

Press to open Options menu.



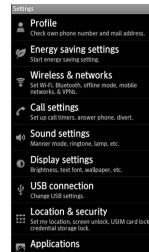
- In some windows, Long Touch item, etc. to open Options menu. In Home Screen, Long Touch open area for Home settings (below).



Handset Customization

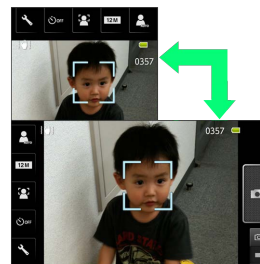
In Home Screen, press then tap to change settings.

- Checkbox (or) appears beside some options. Tap to select () or cancel () option.



Portrait and Landscape Orientation

For some functions/windows, Display orientation changes with handset orientation.



Capturing Screenshots


With SD Card inserted, press and simultaneously to capture screenshot.

- Open captured screenshots from "screen shot" in Gallery, etc.

Applications

Activating Applications

1

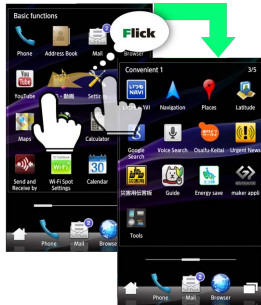
In Home Screen, 



 Launcher appears.

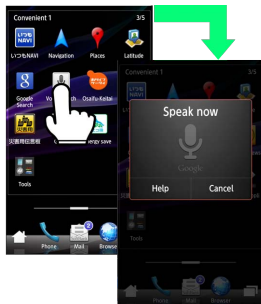
2


Swipe left/right to toggle pages



3

Tap icon




 Application activates.

- For applications within folders, tap folder icon, then tap application icon; tap folder name to close folder.
- If confirmation (authentication prompt, selection, caution, etc.) appears, follow onscreen instructions.


Switching Applications

Open list of active applications and switch between them.

1

In Home Screen, Launcher, etc.,  (Long)

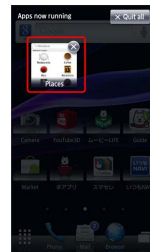



 Active applications appear.

- Swipe left/right to toggle lists.

2

Tap application



 Application switches.

- To hide active application list, press .

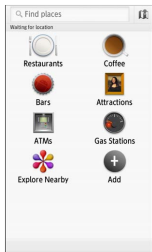
Closing Applications


In any application, press  repeatedly until Home Screen or Launcher returns. (Some applications may remain active.)

To select and close applications, follow these steps:

1

In any application, .



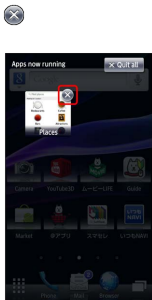
 Home Screen appears.

2



 Active applications appear.

3



 Application ends.

 Closing All Applications

 Quit all  Yes


My Phone Number

Confirming Handset Number

1

In Home Screen,   Settings  Profile



 Profile opens.

- Handset number appears in Own phone number field.

Saving User Information to Profile

1

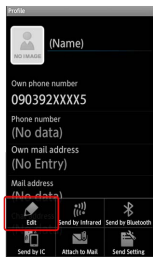
In Home Screen, **MENU** → **Settings** → **Profile**



Profile opens.

2

MENU → **Edit**



Profile entry window opens.

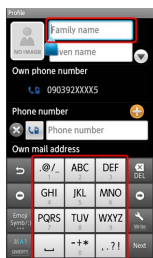
3

Tap item (entry field)

· Tap **+** to show/add entry field or **✕** to delete.

4

Complete field



· Tap other items and complete fields as needed.

5

MENU → **Save** → **Yes**

Profile is saved.

Manner Mode & Offline Mode

Activating Manner Mode

Mute ringtones and other handset sounds to avoid disturbing others around you.

· Shutter click, video recording tones, etc. still sound even in Manner mode.

1

In Home Screen, Launcher, etc., **▽** (**💡** ; Long)



Manner mode activates.

· To cancel, Long Press **▽** (**💡**).

Activating Offline Mode

Temporarily suspend all wireless connections.

1

⏻ (Long)



Phone options appear.

2

Offline mode

Offline mode activates.

· To cancel, Long Press **⏻**, then tap **Offline mode**.



Text Entry

Keyboard Basics

Use a keyboard to enter characters as follows:

12-Key: Multiple characters assigned to each key.

QWERTY and Android: Single letters assigned to each key.

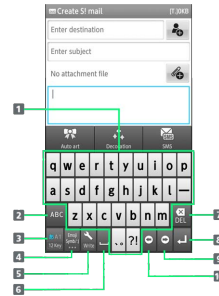
- Tap a text entry field for keyboards.
- In any keyboard, Long Touch  or  to switch between 12-Key keyboard and QWERTY keyboard.
- To change input method, Long Touch text entry window, then tap **Input method** → **Android keyboard** or **iWnn IME - SH edition**.
- Default input method: iWnn IME - SH edition.

12-Key Keyboard Layout




- 1 Enter characters
- 2 Reverse toggle character options
- 3 Backspace cursor
- 4 Enter pictograms, symbols, or emoticons; switch conversion options
- 5 Toggle entry modes
- 6 Enter space; toggle case; add " or °
- 7 Delete characters
- 8 Advance cursor; add space at text end
- 9 Open text entry options; convert hiragana
- 10 Insert line break; enter current characters

QWERTY Keyboard Layout




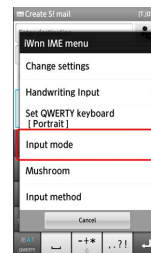
- 1 Enter characters
- 2 Enter letters
- 3 Toggle entry modes
- 4 Enter pictograms, symbols, or emoticons
- 5 Open text entry options
- 6 Enter space; convert hiragana
- 7 Delete characters
- 8 Insert line break; enter current characters
- 9 Advance cursor; add space at text end
- 10 Backspace cursor

Switching Entry Modes

Tap  to toggle Half Alphabet, Half Numeric, and Kanji modes. Follow these steps to use other entry modes:

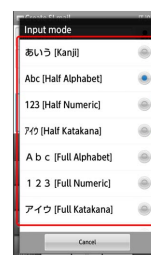
1


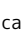


In a text entry window, tap  → **Input mode**



2

Tap mode





 Keyboard interface changes accordingly. Current entry mode indicator-- , , , etc.--appears on Status Bar.

Alphabet







In 12-Key keyboard, follow these steps to enter Keitai in Half Alphabet:

1

In a text entry window,  ( appears)



2


 (twice: K) →  (twice: e) →  (three times: i) →  (once: t) →  (once: a) →  (three times: i)




- The first character is capitalized automatically by default. (Cancel auto capitalization as needed.)

3

OK

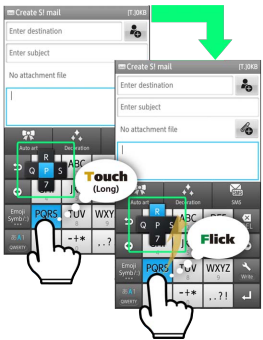
 Keitai is entered.






- To toggle case, type a letter and tap .




Flick Input

In 12-Key entry, flick key for target character.

- Long Touch a key for guidance; flick toward target character to enter.



Target Character	Operation
P	Tap  once
Q	Touch  and flick left
R	Touch  and flick up
S	Touch  and flick right
7	Touch  and flick down

- To disable/enable key preview (Flick Input guidance) or Flick Input itself, in [Language & keyboard](#), tap  edition →  or .

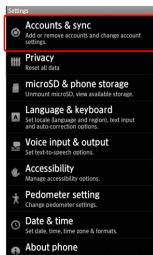
Using Google Accounts

Sign in to a Google Account to use Google services. Some applications may be limited or disabled without a Google Account.

Creating a New Google Account

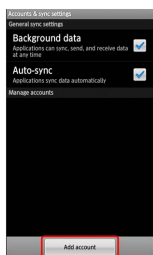
1

In Home Screen, **MENU** → **Settings** → **Accounts & sync**



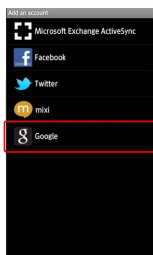
2

Add account



3

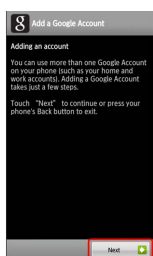
Google



 Add a Google Account appears.

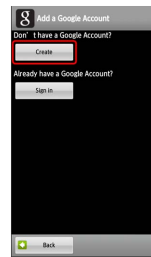
4

Next



5

Create



6

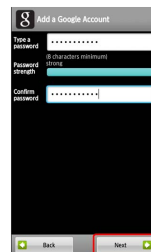
Tap First name field → Enter first name → **Next** →

Enter last name → **Next** → Enter user name → **Done** → **Next**



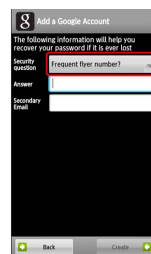
7

Tap password field → Enter password → **Next** → Re-enter password → **Done** → **Next**



8

Tap Security question field



9

Tap question → Tap Answer field → Enter answer →

Next → Enter secondary mail address → **Done** →

Create

 Account information is saved.

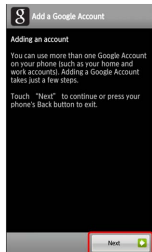
• Follow onscreen instructions.

Signing in to a Google Account

For applications requiring a Google Account, Add a Google Account appears; sign in to use the application.

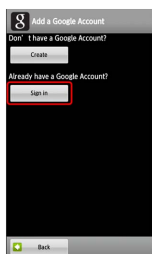
1

In Add a Google Account, **Next**



2

Sign in



3

Tap Username field → Enter user name → **Next** → Enter password → **Done** → **Sign in**



4

Finish setup

Sign-in is complete.

Google Account Caution

Do not forget your Google Account ID and password.

Google Play™

Google Play (Android Market) offers music, movies, books, Android applications, games, and more. Sign in to a [Google Account](#) beforehand.

Installing Free Applications

1

In Home Screen, → In Launcher (Basic functions), (Play Store)



Google Play opens.

- If confirmation appears, follow onscreen instructions.
- (Market) is preinstalled on SoftBank 102SH. Activate (Market) and upgrade to Play Store.

2

Tap free application → **Download** → **Accept & download**

Download (installation) starts.

Purchasing Paid Applications

1

In Home Screen, → In Launcher (Basic functions), (Play Store)



Google Play opens.

- If confirmation appears, follow onscreen instructions.




2

Tap paid application → Tap price → Follow onscreen instructions

Download (installation) starts.

Updating Applications

1





In Home Screen,   In Launcher (Basic functions),  (Play Store)




 Google Play opens.

- If confirmation appears, follow onscreen instructions.

2

MENU  My Apps  Tap application  Update 
Accept & download

 Download (update) starts.

- If confirmation appears, follow onscreen instructions.

Purchased Applications

Payment

No additional payment required for re-downloads of uninstalled purchased applications.




Use on Other Android Devices

Install purchased applications on other Android devices free of charge by using the same Google Account used for the purchase.





Additional Operations

Refund Requests

Request refunds within designated period. Returned applications are deleted from handset; no payment is required. (One refund request per application.)

In Google Play, MENU  My Apps  Tap application  Refund

Enabling Automatic Updates

In Google Play, MENU  My Apps  Tap application  Allow automatic updating ()

- Automatic update is not available for some applications.

Google Play Cautions

Application Installation Disclaimer

Download and install applications on this handset via Google Play (Developed by Google Inc.) at your own risk. SoftBank Mobile is not responsible for user installed application content (quality, reliability, legality, appropriateness, accuracy, etc.) or malfunctions installed applications may cause (due to viruses, etc.).

Application Purchase Disclaimer

SoftBank Mobile cannot be held liable for any damages to self or others that arise from purchase of applications.

Security Codes

Handset Code & Center Access Code

Center Access Code (Network Password; 4-digit code in contract) is required to use Optional Services via landlines or subscribe to fee-based information.

- Write down Handset Code and Center Access Code (Network Password). If you forget these codes, contact us for recovery. For details, contact SoftBank Customer Support, [General Information](#).
- Do not reveal Handset Code or Center Access Code (Network Password). SoftBank Mobile is not liable for misuse or damages.
- Incoming/outgoing call restriction settings will be locked if incorrect Center Access Code (Network Password) is entered three times consecutively during the setting. To resolve, the code must be changed. For details, contact SoftBank Customer Support, [General Information](#).
- If you have previously changed Network Password on a SoftBank handset, enter the latest code to set incoming/outgoing call restrictions.

Saving Handset Code

Write down Handset Code.

1

In Home Screen, **MENU** → **Settings** → **Location & security**



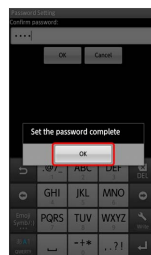
2

Set passcode → **OK** → **Enter Handset Code** → **OK**



3

Re-enter Handset Code → **OK** → **OK**



 Handset Code is saved.

USIM PIN

9999 by default; activate USIM card lock to restrict handset use.

Locking USIM Card

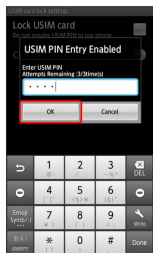
1

In Home Screen,



2

Set up USIM card lock Lock USIM card Enter PIN
 OK ()



USIM card lock activates.

Changing PIN

Activate [USIM card lock](#) first.

1

In Home Screen,



2

Set up USIM card lock Change USIM PIN Enter
 current PIN OK Enter new PIN OK Re-
 enter new PIN OK

PIN is changed.

Important

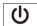
Entering incorrect PIN three consecutive times activates PIN Lock. To cancel, Personal Unblocking Key (PUK Code) is required; contact SoftBank Customer Support, [General Information](#). Entering incorrect PUK Code ten consecutive times activates PUK Lock, disabling handset. For recovery, USIM Card must be reissued at a SoftBank Shop (fees apply).

Sleep Mode

Activating Sleep Mode

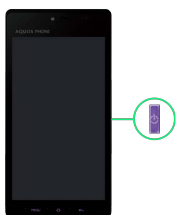
Display goes completely dark and Sleep mode activates after a period of inactivity.


Sleep mode prevents accidental Touch Panel operation.


- Press  to activate Sleep mode anytime.

Canceling Sleep Mode

1

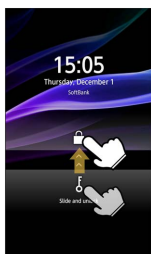



 Unlock window appears.

- Alternatively, press .

2

Drag  up



 Sleep mode is canceled.

- When Security Lock is active, unlock it as well.

Missed Calls & New Messages

Call/message icon appears in Unlock window. Drag icon up to cancel Sleep mode; corresponding menu/window opens.

Software Update

Updating Software

At specified time, handset automatically checks for/downloads firmware updates as required. Follow these steps to update firmware manually:

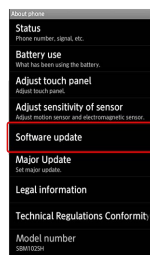
1

In Home Screen,  **MENU**  **Settings**  **About phone**




2

Software update



3

Software update  **Execute**  Follow onscreen instructions

 Software update starts.

Before Software Update

Always back up important information. SoftBank Mobile cannot be held liable for damages from lost information, etc.

Precautions

During Update

Handset is disabled until update is complete. Update may take some time.

Signal Conditions

To reduce failure risk, be sure signal is strong and stable, and charge battery adequately beforehand. Update failure may disable handset.

Handset Interface

- Home Screen Basics..... 34
- Launcher Basics..... 35
- Status Bar..... 36
- Notifications Panel.....37
- Customizing Home Screen..... 38

Home Screen Basics

Most operations start from Home Screen.
Home Screen includes multiple sheets. Add shortcuts, widgets or folders to each sheet.

Window Description (SoftBank 102SH)



- 1 Handset status/notifications appear here
- 2 Use Google Search
- 3 Activate applications
- 4 Show onscreen dialpad
- 5 Open Launcher
- 6 Open Mail Folder list
- 7 Open active application list
- 8 Activate Browser

Window Description (SoftBank 102SHII)



- 1 Handset status/notifications appear here
- 2 Use Google Search
- 3 Activate applications
- 4 Show onscreen dialpad
- 5 Open Launcher
- 6 Open Mail Folder list
- 7 Open active application list
- 8 Activate Browser

Toggling Home Screen Sheets

Swipe left/right to toggle Home Screen sheets.

- From any sheet, press  for top sheet.



Switching to 3D View

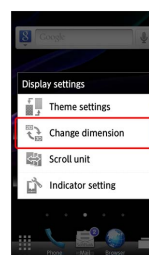
1


In Home Screen, **MENU** → **Display settings**



2

Change dimension



 3D view appears.

- Follow the same steps to return to 2D view.


Using Home Screen Sheet Index

Use Home Screen sheet index to switch, add or delete sheets.

1

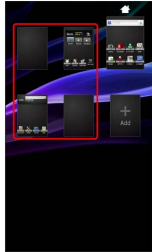
In Home Screen,   Sheet list




 Home Screen sheet index appears.

2

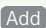
Tap sheet





 Sheet switches.

Home Screen Sheet Index Operations

Adding Sheets


In Home Screen sheet index, 

Deleting Sheets

In Home Screen sheet index, Long Touch sheet  Drag it to  (trash)

· If confirmation appears, follow onscreen instructions.

Closing Home Screen Sheet Index

In Home Screen sheet index, 

Launcher Basics

Use Launcher to access applications.

Launcher includes multiple pages; add pages as needed.

Application layout in Launcher varies between SoftBank 102SH and 102SHII; sample screenshots are based on SoftBank 102SH.

Opening Launcher

1

In Home Screen, 



 Launcher appears.

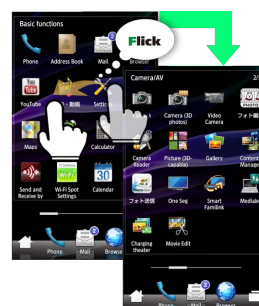
Window Description



- 1 Activate applications
- 2 Show onscreen dialpad
- 3 Open Home Screen
- 4 Open Mail Folder list
- 5 Open active application list
- 6 Activate Browser

Toggling Launcher Pages

Swipe left/right to toggle Launcher pages.



Using Launcher Page Index

Use Launcher page index to toggle, add or delete pages.

1

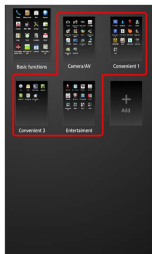
In Launcher, MENU ➔ Page list



☑ Launcher page index appears.

2

Tap page



☑ Page opens.

+ Launcher Page Index Operations

Adding Pages

In Launcher page index, Add

Deleting Pages

In Launcher page index, Long Touch page ➔ Drag it to 🗑 (trash)

- Delete applications on page beforehand.

Closing Launcher Page Index

In Launcher page index, ⬅

Status Bar

Indicators (new message notification, handset status, etc.) appear at the top of Display.



Notification Indicators

Notification indicators appear on the left.



Indicator	Description
📞	Missed Calls
📞	Answer Phone Message Recorded
📧	New SMS/S! Mail
✉	New Email
✉	New Gmail
🕒	Alarm Time Passed

Status Indicators

Status indicators appear on the right.



Indicator	Description
	Battery Strength
	Signal Strength
	No Signal
	Offline mode
	Roaming
	3G Data in Use
	GSM Data in Use
	Alarm Set
	Standard manner mode
	Drive manner mode
	Silent manner mode
	Wi-Fi Connected
	Bluetooth® On
	Bluetooth® Connected
	Answer Phone (: Message Recorded)

• Some indicators appear in different colors while signed in to a Google Account.

Notifications Panel

Open notifications, confirm handset status or change various settings.

Opening Notifications Panel

1

Tap Status Bar



Notifications panel opens.

• Press to exit.

Window Description



- 1 Toggle Wi-Fi on/off
- 2 Toggle Bluetooth® on/off
- 3 Notifications; tap **Clear** to delete all Notifications
- 4 Handset status
- 5 Toggle VeilView on/off
- 6 Toggle Display rotation on/off
- 7 Open Manner mode options
- 8 Adjust Display brightness
- 9 Toggle account synchronization on/off
- 10 Clock (tap for Clock application)
- 11 Toggle GPS positioning on/off
- 12 Open microSD & phone storage menu
- 13 Open active application list
- 14 Close Notifications panel

Customizing Home Screen

Set Wallpaper or add shortcuts.

Setting Wallpaper

1

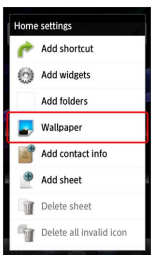
In Home Screen, Long Touch open area



Home settings opens.

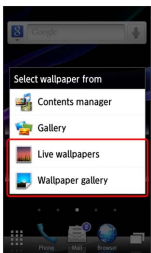
2

Wallpaper



3

Live wallpapers or Wallpaper gallery



· Tap **Gallery** or **Contents manager** to set captured image as Wallpaper.

4

Select image → **Set wallpaper** or **Set to wallpaper**



Wallpaper is set.

· If prompted, follow onscreen instructions.

Adding Shortcuts

Follow these steps to add an application shortcut:

1

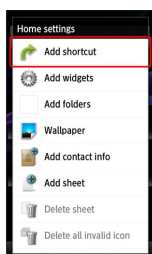
In Home Screen, Long Touch open area



Home settings opens.

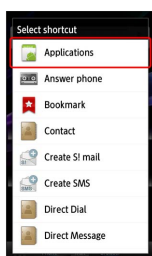
2

Add shortcut



3

Applications

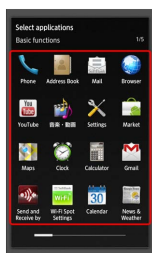


Application list appears.

· Swipe left/right to toggle pages.

4

Tap application



Shortcut is added.

+ Managing Shortcuts

Moving Shortcuts

In Home Screen, Long Touch shortcut → Drag it to target location

Removing Shortcuts

In Home Screen, Long Touch shortcut → Drag it to (trash)

Phone


Placing/Answering Calls.....	42
Optional Services.....	43
Using Address Book.....	48

Placing/Answering Calls

See below to dial directly or answer calls. (Handset does not support Video Call.)


Placing a Call

1

In Home Screen or Launcher, tap  (Phone)

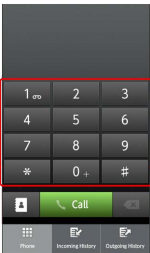


 Call Window opens.

- When incoming/outgoing call history opens, tap **Phone**. If missed call window appears, press  to return to Home Screen or Launcher and start over.

2

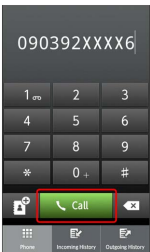
Use onscreen dialpad to enter number




- Include area code for landline numbers.

3

Call

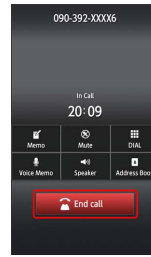



 Handset dials the number.

- Wait for other party to accept the call.

4

To end the call, tap **End call**




 Call ends.


- After calls to/from unsaved numbers, Save to Address Book confirmation appears. Follow onscreen instructions.


Answering a Call

1

When a call arrives, tap 

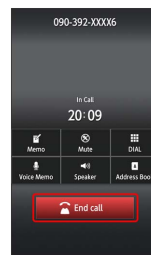



 Call connects.

- Alternatively, in Sleep mode, drag  right; out of Sleep mode, tap **Answer**.

2

To end the call, tap **End call**



 Call ends.


- After calls to/from unsaved numbers, Save to Address Book confirmation appears. Follow onscreen instructions.

Emergency Location Report

Your location is automatically reported to the corresponding agency (police, etc.) when you place emergency calls (110, 119 or 118) with SoftBank 3G handsets.

- Registration/transmission fees do not apply.
- Positioning accuracy is affected by location/signal conditions. Always provide your location and purpose on the phone.
- Location Information is not reported when emergency calls are placed without Caller ID (such as when the number is prefixed with 184). However, the corresponding agency may obtain your Location Information in a life threatening situation.
- Location Information is not reported during Global Roaming.

Emergency Call Restriction

Emergency calls are restricted when Offline mode and USIM card lock are active. Long Press  and cancel Offline mode, then restart handset.

Optional Services

Use these SoftBank Optional Services:

Optional Services

Service	Description
Call Forwarding	Divert all/all unanswered calls to a preset number
Voicemail	Divert all/unanswered calls to Voicemail Center; access messages via handset/touchtone phones
Call Waiting ¹	Answer calls during a call
Group Calling ¹	Switch between open lines/connect multiple lines
Caller ID	Show or hide your number when placing calls
Call Barring	Restrict incoming/outgoing calls by conditions

¹ A separate contract is required.

Initiating Call Forwarding

1

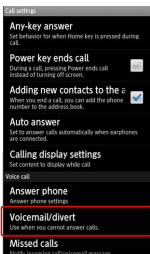
In Home Screen, **MENU** → **Settings** → **Call settings**



Call settings opens.

2

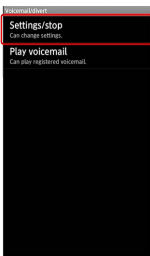
Voicemail/divert



Voicemail/divert menu opens.

3

Settings/stop



Divert menu opens.

4

Always or **No answer** → Enter number



- For **No answer**, tap **Wait time** and select ring time as needed.
- To cancel Call Forwarding, tap **Stop call forward** → **Yes**.

5

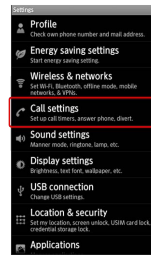
OK

Call Forwarding activates.

Initiating Voicemail

1

In Home Screen, **MENU** → **Settings** → **Call settings**



Call settings opens.

2

Voicemail/divert

Voicemail/divert menu opens.

3

Settings/stop

Divert menu opens.

4

Always or **No answer** → **Voicemail**



- For **No answer**, tap **Wait time** and select ring time as needed.
- To cancel Voicemail, tap **Stop call forward** → **Yes**.

5

OK

Voicemail activates.

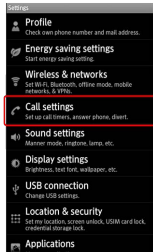
- When a new message is recorded, appears on Status Bar. To play messages, tap **Play voicemail** in Voicemail/divert menu, then follow voice guidance.

Activating Call Waiting

A separate contract is required.

1

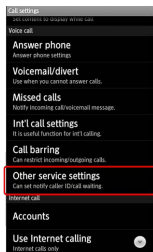
In Home Screen, **MENU** → **Settings** → **Call settings**



Call settings opens.

2

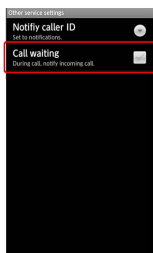
Other service settings



Other service settings opens.

3

Call waiting (☒)



Call waiting activates.

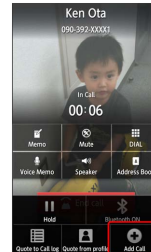
- During a call, a tone sounds for incoming calls; drag right.
- To cancel Call Waiting, tap **Call waiting** .

Using Group Calling

A separate contract is required.

1

During a call, **MENU** → **Add Call**



2

Enter number → **Call**

3

When call connects, **MENU** → **More** → **Merge calls**

All lines connect to each other.

Using Caller ID

1

In Home Screen, MENU → Settings → Call settings



Call settings opens.

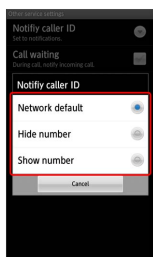
2

Other service settings

Other service settings opens.

3

Notify caller ID → Network default , Hide number or Show number



Caller ID activates.

Using Call Barring

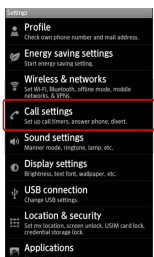
Restrict outgoing/incoming calls and SMS messages.

Restriction	Description
All outgoing calls	Restrict all non-emergency calls
Bar int'l call	Restrict all international calls
Local & home only	Restrict all international calls except calls to Japan
Restrict all incomings	Reject all calls
Bar if abroad	Reject calls while outside Japan

- Center Access Code (Network Password) is required to set incoming/outgoing call restrictions.
- Incoming/outgoing call restriction settings will be locked if incorrect Center Access Code (Network Password) is entered three times consecutively during the setting. To resolve, the code must be changed. For details, contact SoftBank Customer Support, [General Information](#).
- If you have previously changed Network Password on a SoftBank handset, enter the latest code to set incoming/outgoing call restrictions.
- Failure message appears when attempting to place/send calls/SMS with corresponding restriction active. It may take longer to appear in some areas.

1

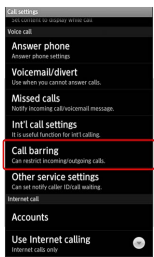
In Home Screen, MENU → Settings → Call settings



Call settings opens.

2

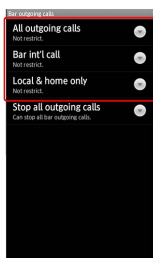
Call barring



Call barring menu opens.

3

Bar outgoing calls or Bar incoming calls → Tap option



4

Enter Center Access Code (Network Password) → OK

Restriction is set.

+ Additional Operations

Setting Missed Call Notification

Activate this function for records of calls missed when handset is off/out-of-range. Activate Voicemail then follow these steps:

In Call settings, Missed calls → Settings → Call
→ Follow voice guidance

Setting Handset Response to Missed Calls

In Call settings, Missed calls → Sounds & alerts → Set

· Set Missed calls sound, Vibration pattern, Incoming calls lamp and Ring duration.

Canceling All Outgoing Call Restrictions

In Call barring menu, Bar outgoing calls → Stop all outgoing calls → Enter Center Access Code → OK

Canceling All Incoming Call Restrictions

In Call barring menu, Bar incoming calls → Stop All incoming calls → Enter Center Access Code → OK

Limiting Calls to Numbers Saved in Address Book

In Call barring menu, Restrict destinations → Enter Handset Code → OK → Restrict address book (☒)

Limiting Calls to Numbers in Call Permitted List

In Call barring menu, Restrict destinations → Enter Handset Code → OK → Specified phone number → Switch on/off (☒) → Call permitted list → <Empty> → Enter number → OK

Rejecting Calls from Unsaved Numbers

In Call barring menu, Reject call → Not registered numbers (☒)

Rejecting Calls from Specified Numbers

In Call barring menu, Reject call → Specified numbers → Switch on/off (☒) → Reject numbers list → <Empty> → Enter number → OK

Rejecting Calls with No/Undisplayable Caller ID or from Payphones



In Call barring menu, **Reject call** → **Number not sent** , **Payphone** or **Unavailable** (☒)

Using Address Book


Save contacts including names, phone numbers, mail addresses, etc.

Adding Contacts

1

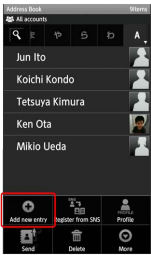
In Home Screen,  → In Launcher (Basic functions),  (Address Book)




-  Address Book opens.
- If confirmation appears, follow onscreen instructions.

2

MENU → **Add new entry**



-  Add contact window opens.
- If account selection window opens, tap an account.

3

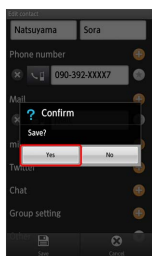
Tap item → Complete entry




- Tap **Next** to move to other items. (Tap **Done** after mail address entry.)

4



Save → Yes




 Contact is saved.

Dialing via Address Book

1

In Home Screen,  → In Launcher (Basic functions),  (Address Book)




 Address Book opens.

· If confirmation appears, follow onscreen instructions.

2

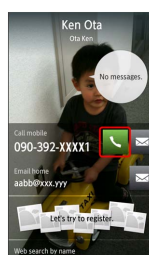
Tap tab  Tap contact




 Contact opens.

· Contacts are sorted by the first character in "Read last."

3



 Handset dials the number.

Important Address Book Usage Note

If handset is left with no battery or an exhausted one, contacts may be altered/lost; handset damage may also affect information recovery. SoftBank Mobile is not liable for any resulting damages. Keep separate copies of contacts, etc.

Messaging & Browser

- Mail Types..... 52
- Sending S! Mail/SMS..... 52
- Receiving & Replying S! Mail/SMS..... 54
- Handling S! Mail/SMS..... 56
- Creating/Sending Gmail..... 56
- Opening Received Gmail..... 57
- Using Email..... 58
- Browsing the Internet..... 60

Mail Types

S! Mail

Exchange messages with S! Mail-compatible SoftBank handsets and e-mail compatible devices (other mobiles, PCs, etc.) beyond SMS character entry limit; attach media files, etc.

SMS

Exchange short messages with mobiles.

Gmail

Google webmail service; synchronize Gmail between handset and Google server automatically.

Email

Exchange Email (POP3/IMAP4) messages on handset.


- Set up an account to use Email.
- Upon Email message retrieval, accounts are synchronized between handset and source mail server; messages are also accessible from PCs.

Sending S! Mail/SMS


Sending S! Mail

Follow these steps to send S! Mail to a number/address saved in Address Book:

1

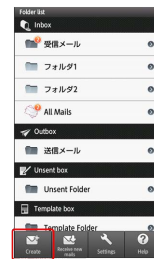
In Home Screen or Launcher,  (Mail)




 Folder list appears.

2

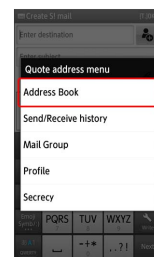
Create




 S! Mail Composition window opens.

3

 Address Book



 Address Book opens.

4

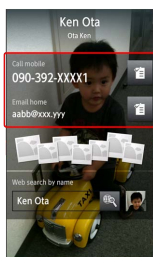
Tap tab  Tap contact

 Contact opens.

- Contacts are sorted by the first character in "Read last."

5

Tap mail address (or number)



6

Enter subject → Next → Enter message

7

Send



❏ S! Mail is sent.

- Handset saves failed S! Mail messages to Unsent Folder; automatically attempts redelivery up to two times.

Sending SMS

Follow these steps to send SMS via sent/received mail records:

1

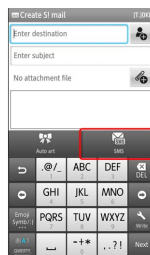
In Home Screen or Launcher, (Mail)



❏ Folder list appears.

2

Create → SMS



❏ SMS Composition window opens.

3

→ Send/Receive history

4

Send history or Receive history → Tap number

5

Enter message → Send

❏ SMS is sent.

- Handset saves failed SMS messages to Unsent Folder; automatically attempts redelivery up to two times.

+ Saving without Sending

S! Mail

In S! Mail Composition window, → Save → Save to unsent box → Save as New

SMS

In SMS Composition window,

Important S! Mail/SMS Transmission Note


If Outbox is full, handset automatically deletes sent messages, unprotected ones first.

Receiving & Replying S! Mail/SMS




Handset receives S! Mail/SMS messages automatically; set message retrieval to manual or retrieve Server Mail as needed.

Opening New Messages


1

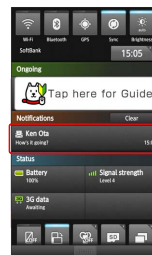
When message arrives, ringtone sounds and  appears on Status Bar




-  appears in Unlock window. Drag  to cancel Sleep mode; message list (Inbox) or message window opens. In message list (Inbox), select a message.
- Unread message count () appears above application icon.

2

Tap Status Bar  Tap message notification




 Message window opens.

- For multiple new messages, message list (Inbox) appears; select one.


Replying to Messages

To reply from message window, skip ahead to **3**.

1

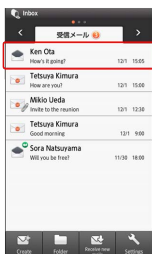
In Home Screen or Launcher,  (Mail)




 Folder list appears.

2

Tap folder in Inbox  Tap message



 Message window opens.

3


Reply or **Reply to all**



- **Reply to all** appears for messages addressed to multiple recipients.


4

Enter message  **Send**

 Message is sent.

Retrieving Complete Messages

In message window, **Receive**

- Tap  to select item to retrieve.

Important Message Retrieval Notes

Retrieval System

By default, complete message including attachments is retrieved; transmission fees may apply depending on subscribed price plan.

Automatic Message Deletion

If Inbox is full, handset automatically deletes oldest received messages, opened/unprotected ones first. If all messages are unopened, handset automatically deletes oldest unprotected ones first.

Retrieval Outside Japan


Message retrieval outside Japan may incur high charges.

Handling S! Mail/SMS


Opening Messages

Follow these steps to open received messages:

1

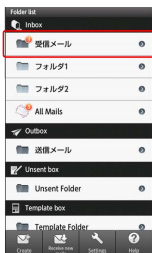
In Home Screen or Launcher,  (Mail)




 Folder list appears.

2

Tap folder in Inbox

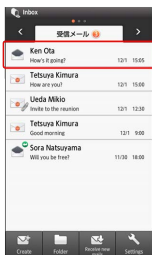



 Message list appears.

· Flick left/right to switch message lists.

3

Tap message



 Message window opens.



· Tap ⏮ or ⏭ to open other messages.

Creating/Sending Gmail

Use Google webmail service. Sign in to a Google Account beforehand.

Creating/Sending Messages

1

In Home Screen,  → In Launcher (Basic functions),  (Gmail)

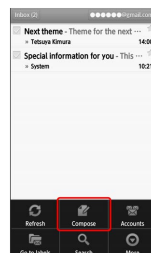


 Inbox opens.

· If confirmation appears, follow onscreen instructions.



2

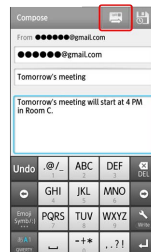
MENU → Compose



 Mail Composition window opens.

3

Complete message  



 Message is sent.

+ Gmail Composition Operations

Adding Cc/Bcc Recipients

In Mail Composition window, **MENU** → **Add Cc/Bcc** → Add recipient

Attaching Files

In Mail Composition window, **MENU** → **Attach** → Select file

· If confirmation appears, follow onscreen instructions.

Saving without Sending

After entering recipient, subject or message text, **Save**

· Message is saved to Drafts.

Discarding Messages

After entering recipient, subject or message text, **MENU** → **Discard** → **OK**

! Important Gmail Usage Note

Gmail messages are not received if recipient device is set to reject messages sent from PCs.

Opening Received Gmail

Gmail groups all related messages by subject. (Conversation view)

Opening New Messages

When Gmail message arrives, ringtone sounds and **Envelope** appears.

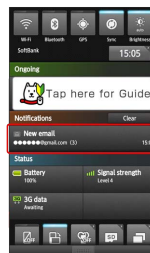
1


Drag Status Bar down for Notifications panel



2

Tap message notification





 Message window opens.

· For two or more new messages, Inbox opens; select one.

Opening Messages

1

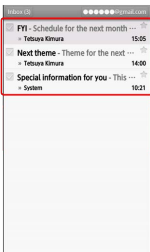
In Home Screen,  → In Launcher (Basic functions),  (Gmail)




 Inbox opens.


2

Tap conversation (subject)



 Message window opens.

+ Replying to Messages



In message window,  → Complete message

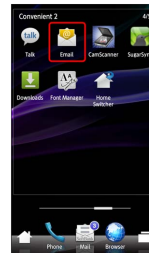
Using Email


Mail Account Setup

Confirm user name (user ID), password, server name, etc. beforehand.


1

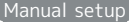
In Home Screen,  → In Launcher (Convenient 2),  (Email)



 Account setup menu opens (if no account is set up).


2

Enter mail address and password → 

· Tap  to configure incoming/outgoing server settings directly.


3


Complete incoming server settings →  → Complete outgoing server settings → 

 Incoming and outgoing server settings are complete.

· Procedure may vary by e-mail service.



4

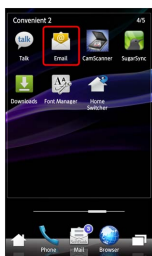
Enter account name and sender name → 


 Account setup is complete.

Creating/Sending Messages

1

In Home Screen,  In Launcher (Convenient 2),  (Email)

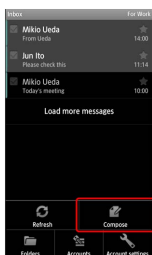



 Inbox opens.

· For multiple accounts, Email window opens.


2

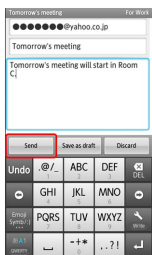
MENU  Compose



 Mail Composition window opens.


3

Complete message  Send



 Message is sent.


Opening New Messages

When Email message arrives, ringtone sounds and  appears.

1

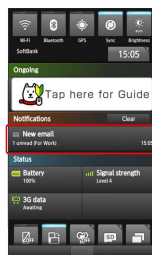
Drag Status Bar down for Notifications panel




 Notifications panel opens.

2

Tap message notification





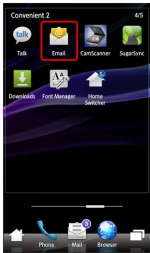
 Message window opens.

· For two or more new messages, Inbox opens; select one.

Opening Messages

1

In Home Screen,  In Launcher (Convenient 2),  (Email)

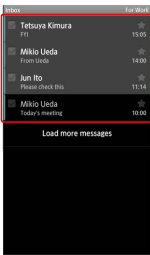



 Inbox opens.

- For multiple accounts, Email window opens.

2

Tap message




 Message window opens.

Browsing the Internet


View Internet sites via Browser.

Using Browser

1

In Home Screen or Launcher,  (Browser)



 Handset connects to the Internet.

- Flick up/down to scroll.
- Internet connection confirmation appears upon tapping URL within message text; tap **Yes** to open linked page in Browser.

Saving Bookmarks

1

In Home Screen or Launcher,  (Browser)



 Handset connects to the Internet.



2

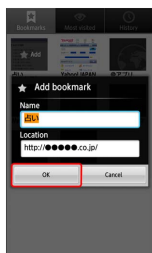
Open target page  MENU  Bookmarks




 Bookmarks opens.

3


Add  Check/edit name/URL  OK



 Current page is saved as a bookmark.

Opening Bookmarks

1

In Home Screen or Launcher,  (Browser)



 Handset connects to the Internet.


2

MENU  Bookmarks  Tap bookmark

 Corresponding page opens.

Using History

1

In Home Screen or Launcher,  (Browser)



 Handset connects to the Internet.


2

MENU  More  History  Tap item  Tap record

 Corresponding page opens.

Opening Frequently Visited Pages

1


In Home Screen or Launcher,  (Browser)



 Handset connects to the Internet.

2


MENU  More  History  Most visited  Tap record

 Corresponding page opens.

Opening Additional Windows

Open another page in a new window and switch between windows.

1

In Home Screen or Launcher,  (Browser)




 Handset connects to the Internet.

2

MENU  New window



 Current page opens in another window.

- Press MENU and tap Windows to switch/close windows; open additional windows as needed.



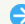
SSL & TLS

Secure Sockets Layer (SSL) and Transport Layer Security (TLS) are encryption protocols that secure Internet transmissions of important/sensitive information such as credit card numbers and corporate secrets, providing protection against online threats (eavesdropping, falsification, impersonation, etc.).




Browser Operations

Signing in to My SoftBank





Access My SoftBank to check service charges or reward points, change contract details (subscribed price plan, optional services, etc.), customize handset address, use anti-spam settings, and more.

In a page, MENU  Bookmarks  My SoftBank 
Follow onscreen instructions

Entering URLs Directly

In a page, tap URL entry field  Enter URL  



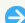

Searching for Words/Phrases

In a page, tap URL entry field  Enter word/phrase 
  Tap link

Editing Bookmarks

In a page, MENU  Bookmarks  Long Touch
bookmark  Edit bookmark  Edit name/URL  OK

Deleting Bookmarks

In a page, MENU  Bookmarks  Long Touch
bookmark  Delete bookmark  OK

SSL/TLS Caution

When a security notice appears upon opening an Internet page, subscribers must decide for themselves whether or not to open the page. Opening secure pages constitutes agreement to the terms of SSL/TLS usage. SoftBank, SHARP Corporation, VeriSign Japan and Cybertrust cannot be held liable for any damages associated with the use of SSL/TLS.

Camera



- Photo Camera.....64
- Video Camera..... 65
- Capturing 3D Images.....67

Photo Camera


Capturing Photos

Capture JPEG images. Insert SD Card beforehand. (Captured photos are saved to SD Card.)

1

In Home Screen,  → In Launcher (Camera/AV),  (Camera)

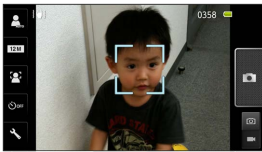


 Photo Viewfinder appears.

- If confirmation appears, follow onscreen instructions.

2


Aim External Camera at subject



- For people, focus automatically locks on detected face.

3



 Shutter clicks; photo is saved to SD Card.

+ Photo Viewfinder Operations

Adjusting Brightness

In Photo Viewfinder, drag vertically for Brightness Scale

Adjusting Zoom

In Photo Viewfinder, drag horizontally for Zoom Slider

Locking Focus

In Photo Viewfinder, tap focus lock target

- Camera continuously focuses on moving subjects.
- To release shutter, tap the subject again.
- Camera uses color to track subjects; may not correctly track faintly colored subjects or ones similar to background color.

Opening Captured Photo

After photo capture, tap preview thumbnail

- Press **MENU** to send captured photo via mail or set it as Wallpaper, etc.


Changing Image Size

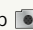
In Photo Viewfinder, **12M** , etc. (Picture Size) → Tap size

Changing Scene Setting


In Photo Viewfinder, **STD** , etc. (Scene) → Tap scene

Using Self-timer

In Photo Viewfinder,  , etc. (Self-timer) → Tap time


- Tap  ; shutter is released after specified time elapses.


Using Mobile Light

In Photo Viewfinder,  (Settings) → **Mobile light** → Tap option

- Do not shine Mobile Light in eyes; may damage eyesight.

Using Internal Camera

In Photo Viewfinder,  (Settings) → **Switch in/outCam**

- Some settings (Scene, Picture Size, etc.) are not available for Internal Camera.
- To switch back to External Camera, tap  (IN/OUT).

Opening Help

In Photo Viewfinder, **MENU** → **Help**

 Important Camera Usage Note

Mind your manners when using Camera.



Video Camera

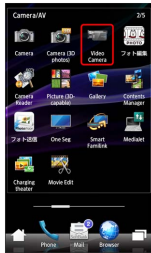
Recording Video


Record MPEG-4 or H.264/AAC video. Insert SD Card beforehand. (Recorded videos are saved to SD Card.)

- Available format varies by recording size.



1

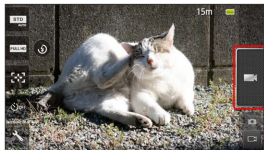
In Home Screen,  → In Launcher (Camera/AV),  (Video Camera)




 Video Viewfinder appears.

2


Aim External Camera at subject  




 Tone sounds and recording starts.

- For people, focus automatically locks on detected face.

3

 to stop

 Recording stops; video is saved to SD Card.

 Video Viewfinder Operations

Adjusting Brightness

In Video Viewfinder, drag vertically for Brightness Scale

Adjusting Zoom

In Video Viewfinder, drag horizontally for Zoom Slider


- Zoom is not available for Full HD/HD videos.


Locking Focus

In Video Viewfinder, tap focus lock target



- Camera continuously focuses on moving subjects.
- Camera uses color to track subjects; may not correctly track faintly colored subjects or ones similar to background color.

Playing Recorded Video



After recording, tap preview thumbnail  Tap video

- Press  to send recorded video via mail, open video properties, etc.
- If confirmation appears, follow onscreen instructions.



Changing Recording Size


In Video Viewfinder,  , etc. (Picture Size)  Tap size

Changing Scene Setting









In Video Viewfinder,  , etc. (Scene)  Tap scene

Using Self-timer

In Video Viewfinder,  , etc. (Self-timer)  Tap time





- Tap  ; recording starts after specified time elapses.



Recording Slow Motion Video

In Video Viewfinder,  (Settings)      Frame subject on Display  




- Recording stops after approximately five seconds; video is saved.

Enabling/Disabling Microphone

In Video Viewfinder,  (Settings)   

 or 

Opening Help

In Video Viewfinder,   

 Important Camera Usage Notes

General Use

Mind your manners when using Camera.



Continuous Recording Time

Recording capacity is 2 GB per file (recording stops when exceeded).
To continue recording, start another session.


Capturing 3D Images

Capturing 3D Photos

1



In Home Screen,  In Launcher (Camera/AV), 
(Camera (3D photos))

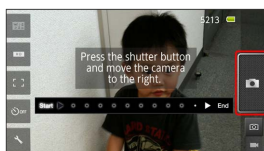


 3D Photo Viewfinder appears.

- If confirmation appears, follow onscreen instructions.

2

Frame subject on Display  




 Shutter clicks.

3

Move handset to the right



 Photo is captured when progress bar reaches **End** ; saves automatically.

Music & Images

Music.....	70
Still Images & Video.....	70






Music

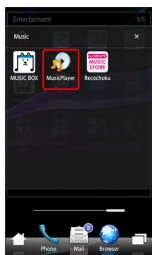
Playing Music


Supported File Formats:

- 3GPP, 3GPP2, MP4, MP3, AMR, WMA, ASF, PIFF, OGG Vorbis, WAVE, MIDI, XMF, RTTTL/RTX, OTA, iMelody

1

In Home Screen,   In Launcher (Entertainment),    (MusicPlayer)

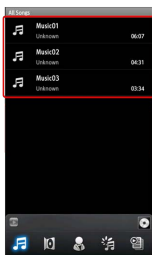


 Library opens.

- MusicPlayer opens in the last-used state.

2

Tap file



 File plays.

Still Images & Video




View still images and video saved to SD Card; use Slideshow or play 2D video in 3D.

Opening/Playing Files


Supported File Formats:

Image	File Format
Still Images	JPEG, PNG, GIF, BMP, WBMP, MPO
Video	3GPP, 3GPP2, MP4, WMV, ASF, PIFF, WebM

1

In Home Screen,   In Launcher (Camera/AV),  (Gallery)



 Albums appear.


2

Tap album




3

Tap file

 File opens/plays.

- If confirmation appears, follow onscreen instructions.

+ Slideshow

In still image, 
 · Tap image to stop.

Connectivity

Connecting to Wi-Fi.....	72
Using Bluetooth®.....	75

Connecting to Wi-Fi

Use household Wi-Fi networks, etc. to connect to the Internet.

Connecting Selected Access Points

1

In Home Screen, **MENU** → **Settings** → **Wireless & networks**



2

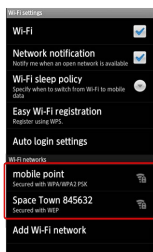
Wi-Fi settings

Wi-Fi settings opens.

- If disabled (), tap **Wi-Fi** to enable it ().

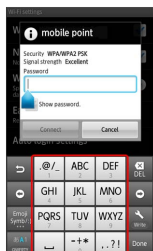
3

Tap access point




4

Tap Password field → Enter password



5

Connect

 Connection is established.

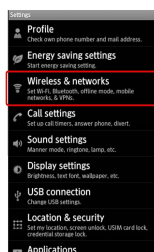
- May omit password entry for some access points.
- Password (indicated by WEP, WPA, KEY, etc.) may be found on a label on your wireless LAN router. For details, contact the vendor of your wireless LAN router. For public wireless LAN services, check the password with your ISP.

Registering Private Access Points

Handset supports WPS standard that automatically configures settings for easy Wi-Fi network access upon establishing a connection on handset.

1

In Home Screen, **MENU** → **Settings** → **Wireless & networks**



2

Wi-Fi settings

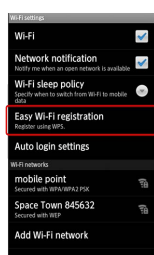


Wi-Fi settings opens.

If disabled (), tap **Wi-Fi** to enable it ().

3

Easy Wi-Fi registration



Easy Wi-Fi registration opens.

4


WPS method



• Enter PIN that appears on Display into the access point.

5

Start

 Access point registration starts.

- Follow onscreen instructions.
- Connection is established automatically thereafter.

Using Public Wireless LAN Services

Follow these steps to connect to BB mobilepoint:

- To use public wireless LAN services, subscription with the corresponding ISP, etc. is required.

1

In Home Screen, **MENU** → **Settings** → **Wireless & networks**



2

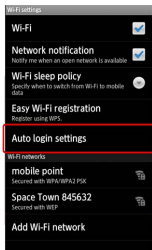
Wi-Fi settings

Wi-Fi settings opens.

- If disabled (), tap **Wi-Fi** to enable it ().

3

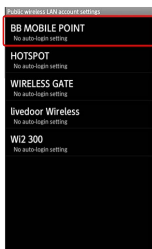
Auto login settings



Public wireless LAN account settings opens.

4

BB MOBILE POINT



BB MOBILE POINT opens.

5

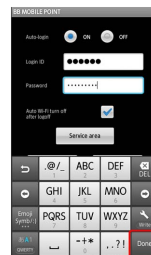
ON or **OFF**

6

Tap Login ID field → Enter login ID

7

Tap Password field → Enter password → **Done**



8

OK

Handset is ready for connection to public wireless LAN services.

- If confirmation appears, follow onscreen instructions.
- When Auto-login is set to **ON**, handset connects to BB mobilepoint automatically in the service range.
- Connection to some public wireless LAN services may not be possible. Additional charges may apply depending on service area.

Disconnecting Wi-Fi

1

In Home Screen, **MENU** → **Settings** → **Wireless & networks**



2

Wi-Fi settings

Wi-Fi settings opens.

3

Tap connected access point → **Forget**

Wi-Fi is disconnected.

+ Wi-Fi Operations

Connecting Access Points Manually

In Wi-Fi settings, **Add Wi-Fi network** → Tap Network SSID field → Enter Network SSID → Done → Tap security protocol → Done → Save

- For some security protocols, complete other fields as needed.

Disconnecting Access Points

In Wi-Fi settings, Long Touch access point → Forget network → Yes

? Troubleshooting

Q. Cannot detect access points

A. There may be multiple access points nearby. Handset may not detect access points correctly if there are multiple access points sharing the same channel setting in close vicinity.

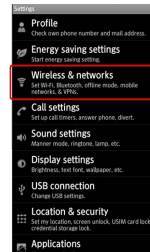
Using Bluetooth®

Wirelessly transfer files/data between handset and compatible devices (handsfree devices, etc.).

Activating Bluetooth®

1


In Home Screen, **MENU** → **Settings** → **Wireless & networks**





2

Bluetooth



 Bluetooth® activates.

- Tap **Bluetooth** to toggle on ()/off ().

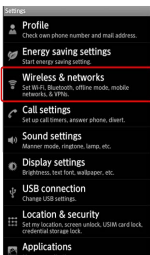
Device Search & Pairing

Search for nearby Bluetooth® devices and pair them with handset; transfer files to/from paired devices.

- Activate Bluetooth® and make devices to be paired discoverable first.

1

In Home Screen, **MENU** → **Settings** → **Wireless & networks**



2

Bluetooth settings



Bluetooth settings opens; found devices are listed.

- If target device is not found, tap **Scan for devices** to retry.

3

Tap device → Follow onscreen instructions to complete pairing

Pairing completes; handset connects to handsfree devices, etc. automatically.

- Pairing procedure varies by target device.

Connecting Paired Bluetooth® Devices

1

In Home Screen, **MENU** → **Settings** → **Wireless & networks**



2

Bluetooth settings



Bluetooth settings opens.

3

Tap device

Tapped device is connected.

Accepting Connection Requests

Handset automatically accepts connection requests from paired devices. For unpaired devices, enable Discoverable () first; when connection request arrives, follow onscreen prompt.

- If confirmation appears, follow onscreen instructions.

+ Bluetooth® Connection Operations

Unpairing Devices

In Bluetooth settings, Long Touch device → Unpair (or Disconnect & unpair)

Disconnecting Handsfree Devices, Etc.


In Bluetooth settings, tap device → OK

Allowing Other Devices to Detect Handset

In Bluetooth settings, Discoverable (☒)



- Discoverable turns off automatically after a certain period of time.
- To change Discoverable timeout time, in [Wireless & networks](#), tap Bluetooth settings → Discoverable timeout .

Receiving Files (e.g., Address Book via All File Transfer)



When file reception request arrives,  appears on Status Bar. Follow these steps to receive files:

- In Home Screen, etc., tap Status Bar → Tap notification → Accept → After receiving files, tap Status Bar → Tap notification → Tap file (.vcf) → Register of data → Enter Handset Code → OK → Tap option
- If confirmation appears, follow onscreen instructions.
 - Received files are saved to SD Card; open them from Contents Manager.



Sending Single Files (e.g., Address Book)

- In Home Screen,  → In Launcher (Basic functions),  (Address Book) → Long Touch contact → Send by Bluetooth → Yes → Tap device
- If confirmation appears, follow onscreen instructions.

Sending Selected Files (e.g., Address Book)

- In Home Screen,  → In Launcher (Basic functions),  (Address Book) → MENU → Send → Send by Bluetooth → Select and send → Tap contacts (☒) → Send → Yes → Tap device
- If confirmation appears, follow onscreen instructions.

Sending All Files (e.g., Address Book)

- In Home Screen,  → In Launcher (Basic functions),  (Address Book) → MENU → Send → Send by Bluetooth → Send all items → Yes → Enter Handset Code → OK → Tap account → Tap device
- If confirmation appears, follow onscreen instructions.

? Troubleshooting

- Q. Cannot use Bluetooth®
- A. Offline mode may be active. Cancel it to use Bluetooth® functions.

! Important Bluetooth® Usage Notes

Connection

Bluetooth® connection may not be possible with some Bluetooth® devices. Noise may interfere with wireless or handsfree conversations.

File Transfer

Files may not appear correctly on recipient devices.

Global Services

Global Roaming.....	80
Calling from Outside Japan.....	81

Global Roaming

Handset is Global Roaming Service eligible. Use the same handset number outside Japan.

Switching Network Services

Handset connects to 3G Network automatically by default. Follow these steps to change setting according to Network service provided by target network operator outside Japan:

- Use default Network service setting in Japan or other 3G Network areas.

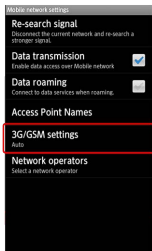
1

In Home Screen, **MENU** → **Settings** → **Wireless & networks**



2

Mobile networks → **3G/GSM settings**



3G/GSM settings opens.

3

Manual → **3G/GSM** , **3G** or **GSM**



Network service is set.

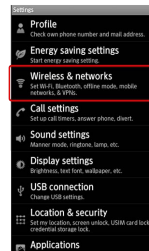
- To switch Network services automatically, tap **Auto** .

Selecting a Network Operator

Handset connects to an appropriate network operator automatically by default. Follow these steps to select a network operator manually:

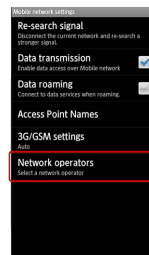
1

In Home Screen, **MENU** → **Settings** → **Wireless & networks**



2

Mobile networks → **Network operators**



3

Tap operator

Network operator is set.

- Tap **Select automatically** to set an appropriate network operator automatically.
- Tap **Search networks** to search for all available network operators.

Calling from Outside Japan

See SoftBank Mobile Website for details:

http://mb.softbank.jp/en/global_services/

Access roaming area/rate information or print it out to carry with you while traveling abroad.


Calling Japan

1


In Home Screen or Launcher,  (Phone)



 Call Window opens.

- When incoming/outgoing call history opens, tap **Phone**. If missed call window appears, press  to return to Home Screen or Launcher and start over.

2

Use onscreen dialpad to enter number  **Call**


 Roaming assistant appears.

- Do not add + before the number.

3


Japan number



 Handset dials the number.


Calling Landlines & Mobiles within the Same Country

1


In Home Screen or Launcher,  (Phone)




 Call Window opens.

- When incoming/outgoing call history opens, tap **Phone**. If missed call window appears, press  to return to Home Screen or Launcher and start over.

2

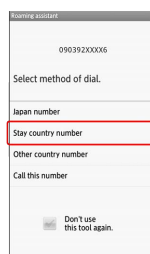
Use onscreen dialpad to enter number  **Call**


 Roaming assistant appears.

- Do not add + before the number.

3


Stay country number



 Handset dials the number.


Calling Countries aside from Japan

1


In Home Screen or Launcher,  (Phone)




 Call Window opens.

- When incoming/outgoing call history opens, tap **Phone**. If missed call window appears, press  to return to Home Screen or Launcher and start over.

2

Use onscreen dialpad to enter number  **Call**


 Roaming assistant appears.

- Do not add + before the number.

3

Other country number




 Country code list appears.

4

Tap country






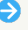




 Handset dials the number.

Calling SoftBank Handsets

Always select **日本(JPN)**.







+ International Call Operations

Changing Country Codes





In Home Screen, **MENU**  **Settings**  **Call settings**  **Int'l call settings**  **User List**  **Tap country/area**  **Change by list**  **Tap country/area**  **Register**


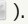
- Tap **Entry direct** to enter country name and code directly.

Deleting Country Codes

In Home Screen, **MENU**  **Settings**  **Call settings**  **Int'l call settings**  **User List**  **Tap country/area**  **Delete from list**

Enabling/Disabling Abroad Assistant

In Home Screen, **MENU**  **Settings**  **Call settings**  **Int'l call settings**  **Abroad assistant**

- Tap **Abroad assistant** to toggle Enable () and Disable ().

Settings

- Wireless & Network Settings.....84
- Sound Settings.....86
- Application Settings.....87
- Accounts & Sync Settings..... 89
- Privacy Setting..... 89
- Language & Keyboard Settings..... 90
- Date & Time Settings..... 91
- About Phone.....92


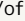
Wireless & Network Settings

Wireless & Network Settings

+ Offline Mode

Disabling/Enabling All Wireless Connections


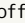
In Home Screen, **MENU** → **Settings** → **Wireless & networks** → **Offline mode**

- Tap **Offline mode** to toggle on ()/off ().

+ Wi-Fi

Enabling/Disabling Wi-Fi


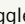
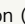
In Home Screen, **MENU** → **Settings** → **Wireless & networks** → **Wi-Fi**

- Tap **Wi-Fi** to toggle on ()/off ().
- Disable **Wi-Fi** to extend Battery Time.

+ Wi-Fi Settings

Enabling/Disabling Available Network Notifications

In Home Screen, **MENU** → **Settings** → **Wireless & networks** → **Wi-Fi settings** → **Network notification**


- Available when Wi-Fi is on ().
- Tap **Network notification** to toggle on ()/off ().

Selecting a Wi-Fi Sleep Option

In Home Screen, **MENU** → **Settings** → **Wireless & networks** → **Wi-Fi settings** → **Wi-Fi sleep policy** → Tap option

Enabling/Disabling Auto-login in Public WLAN Service Areas


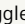
In Home Screen, **MENU** → **Settings** → **Wireless & networks** → **Wi-Fi settings** → **Auto login settings** → Tap service → **Auto-login** **ON** or **OFF** → Tap Login ID field → Enter ID → **Next** → Enter password → **Done** → **OK**

- Available when Wi-Fi is on ().
- Setup procedure varies by ISP/contract terms.
- If confirmation appears, follow onscreen instructions.

+ Home Network Settings


Enabling/Disabling DLNA Device Media File Sharing

In Home Screen, **MENU** → **Settings** → **Wireless & networks** → **Home network settings** → **Home network server**

- Set up **Wi-Fi for home NW server** beforehand.
- Tap **Home network server** to toggle on ()/off ().
- See TV user guide to learn how to connect handset to DLNA-compatible TV.

Setting up a Network (Wi-Fi Access Point) for DLNA Service

In Home Screen, **MENU** → **Settings** → **Wireless & networks** → **Home network settings** → **Wi-Fi for home NW server** → Tap access point

- Available when Home network server is off ().
- If confirmation appears, follow onscreen instructions.

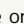
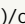
Saving a Name that Appears on DLNA Devices

In Home Screen, **MENU** → **Settings** → **Wireless & networks** → **Home network settings** → **Home network server name** → Tap entry field → Enter name → **Done** → **OK**

+ Bluetooth

Activating/Canceling Bluetooth®

In Home Screen, **MENU** → **Settings** → **Wireless & networks** → **Bluetooth**

- Tap **Bluetooth** to toggle on ()/off ().
- Disable **Bluetooth** to extend Battery Time.

+ Bluetooth Settings

Connecting to Bluetooth® Devices by Service

In Home Screen, **MENU** → **Settings** → **Wireless & networks** → **Bluetooth settings** → Long Touch device → **Options...** → Tap item → **Connect**

- Available for compatible devices only.
- Enable **Bluetooth** first.

Changing Handset Name that Appears on Other Devices

In Home Screen, **MENU** → **Settings** → **Wireless & networks** → **Bluetooth settings** → **Device name** → Enter name → **OK**

- Pictograms and line breaks are not supported.
- Enable **Bluetooth** first.

Changing Discoverable Timeout Time

In Home Screen, **MENU** → **Settings** → **Wireless & networks** → **Bluetooth settings** → **Discoverable timeout** → Tap item

- Enable **Discoverable** (☒) first.
- When **Discoverable timeout** is set to **Never**, handset is discoverable until **Discoverable** is disabled (☐).
- Enable **Bluetooth** first.

Selecting whether to Use Handsfree Device or Operated Device as Means of Conversation

In Home Screen, **MENU** → **Settings** → **Wireless & networks** → **Bluetooth settings** → **Detailed Bluetooth Settings** → **Handsfree setting** → Tap option

- Enable **Bluetooth** first.

+ VPN Settings

Adding Virtual Private Networks (VPNs)

In Home Screen, **MENU** → **Settings** → **Wireless & networks** → **VPN settings** → **Add VPN** → Tap item → Complete setting

- Tap a VPN to connect/disconnect it. Long Touch one to edit/delete it.

+ Mobile Networks

Enabling/Disabling Mobile Data Transmissions

In Home Screen, **MENU** → **Settings** → **Wireless & networks** → **Mobile networks** → **Data transmission**

- Tap **Data transmission** to toggle on (☒)/off (☐).

Enabling/Disabling Data Roaming

In Home Screen, **MENU** → **Settings** → **Wireless & networks** → **Mobile networks** → **Data roaming**

- Tap **Data roaming** to toggle on (☒)/off (☐).
- If confirmation appears, follow onscreen instructions.

Adding Access Points

In Home Screen, **MENU** → **Settings** → **Wireless & networks** → **Mobile networks** → **Access Point Names** → **MENU** → **New APN** → Tap item → Complete setting → **Done** → **OK** → **MENU** → **Save**

Restoring Default Settings

In Home Screen, **MENU** → **Settings** → **Wireless & networks** → **Mobile networks** → **Access Point Names** → **MENU** → **Reset to default**

Switching between 3G and GSM Networks Automatically

In Home Screen, **MENU** → **Settings** → **Wireless & networks** → **Mobile networks** → **3G/GSM settings** → **Auto**

Switching between 3G and GSM Networks Manually

In Home Screen, **MENU** → **Settings** → **Wireless & networks** → **Mobile networks** → **3G/GSM settings** → **Manual** → Tap Network

Selecting a Network Operator

In Home Screen, **MENU** → **Settings** → **Wireless & networks** → **Mobile networks** → **Network operators** → **Select automatically** (or tap operator directly)

- Tap **Select automatically** to set an appropriate network operator automatically.
- Tap **Search networks** to search for network operators again.

Sound Settings

Sound Settings

+ Manner Mode

Activating Manner Mode

In Home Screen, **MENU** → **Settings** → **Sound settings**
 → **Manner mode** → Tap option

+ Phone Vibe

Enabling/Disabling Vibration

In Home Screen, **MENU** → **Settings** → **Sound settings**
 → **Phone vibe**
 · Tap **Phone vibe** to toggle on (☒)/off (☐).

+ Volume

Setting Handset Volume

In Home Screen, **MENU** → **Settings** → **Sound settings**
 → **Volume** → Drag slider to adjust volume → **OK**
 · To apply ringtone volume level to notification sound, tap **Use incoming call volume for notifications** .

+ Earphone Type

Setting Headphone Type

In Home Screen, **MENU** → **Settings** → **Sound settings**
 → **Earphone type** → Tap option → **OK**

+ Melody

Setting Incoming Ringtone

In Home Screen, **MENU** → **Settings** → **Sound settings**
 → **Melody** → Tap tone/file → **OK**

+ Vibrator Pattern

Changing Vibration Pattern

In Home Screen, **MENU** → **Settings** → **Sound settings**
 → **Vibrator Pattern** → Tap pattern → **OK**

+ Incoming Lamp

Setting Incoming Illumination

In Home Screen, **MENU** → **Settings** → **Sound settings**
 → **Incoming lamp** → **Blinking pattern** or **Blinking color** → Tap item → **OK**

+ Notification Sound

Changing Notification Sound

In Home Screen, **MENU** → **Settings** → **Sound settings**
 → **Notification sound** → Tap tone/file → **OK**

+ Ring Duration

Changing Duration for Notification Sound

In Home Screen, **MENU** → **Settings** → **Sound settings**
 → **Ring duration** → **Ring time setting** → Select time → **OK**
 · For **Ring single song** , selected tone/file plays until it ends.

+ Pulse Notification Light

Enabling/Disabling Notification Lamp for Notifications

In Home Screen, **MENU** → **Settings** → **Sound settings**
 → **Pulse notification light**
 · Tap **Pulse notification light** to toggle on (☒)/off (☐).
 · Disable **Pulse notification light** to extend Battery Time.

+ Audible Touch Tones



Enabling/Disabling Onscreen Dialpad Tones

In Home Screen, **MENU** → **Settings** → **Sound settings**
 → **Audible touch tones**
 · Tap **Audible touch tones** to toggle on (☒)/off (☐).
 · Disable **Audible touch tones** to extend Battery Time.

+ Audible Selection

Enabling/Disabling Tap Sounds



In Home Screen, **MENU** → **Settings** → **Sound settings** → **Audible selection**

- Tap **Audible selection** to toggle on ()/off ().
- Disable **Audible selection** to extend Battery Time.

+ Screen Lock Sounds

Enabling/Disabling Lock/Unlock Sounds for Sleep Mode


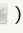
In Home Screen, **MENU** → **Settings** → **Sound settings** → **Screen lock sounds**

- Tap **Screen lock sounds** to toggle on ()/off ().
- Disable **Screen lock sounds** to extend Battery Time.

+ Haptic Feedback

Enabling/Disabling Key Tap Vibration

In Home Screen, **MENU** → **Settings** → **Sound settings** → **Haptic feedback**

- Tap **Haptic feedback** to toggle on ()/off ().
- Disable **Haptic feedback** to extend Battery Time.



Application Settings

Application Settings

+ Unknown Sources

Enabling/Disabling Installation of Non-Android Market or Non-Google Play Applications

In Home Screen, **MENU** → **Settings** → **Applications** → **Unknown sources**

- Tap **Unknown sources** to toggle on ()/off ().
- If confirmation appears, follow onscreen instructions.

+ Preferred Install Location

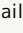
Setting Install Location

In Home Screen, **MENU** → **Settings** → **Applications** → **Preferred install location** → Tap option

+ File Transfer Mail Software

Setting Default Mailer for Sending Files

In Home Screen, **MENU** → **Settings** → **Applications** → **File transfer mail software** → **Set the mail software** → Tap item

- Disable **Set the mail software** () to select a mailer upon attaching a file.

+ Home Applications

Changing Home Application



In Home Screen, **MENU** → **Settings** → **Applications** → **Home applications** → Tap item

- Download Home applications via Android Market, Google Play, etc. beforehand.

+ Performance Control

Saving Battery Consumption by Controlling Performance

In Home Screen, **MENU** → **Settings** → **Applications** → **Performance Control**

- Tap **Performance Control** to toggle on ()/off ().

+ Manage Applications

Opening Application Properties

In Home Screen, **MENU** → **Settings** → **Applications** → **Manage applications** → Tap application

- Confirm version/memory usage, uninstall/force-stop application, etc.

+ Running Services

Opening List of Active Services

In Home Screen, **MENU** → **Settings** → **Applications** → **Running services**

- To stop active service, tap one then tap **Stop**.
- If confirmation appears, follow onscreen instructions.

+ Storage Use

Confirming Application Storage Status

In Home Screen, **MENU** → **Settings** → **Applications** → **Storage use**

+ Battery Use

Confirming Battery Status

In Home Screen, **MENU** → **Settings** → **Applications** → **Battery use** → Tap item

- For some items, related function/setting name (e.g., **Display settings** for Display) appears in details window; tap it for settings.

+ Development

Enabling/Disabling Debug Mode upon USB Connection

In Home Screen, **MENU** → **Settings** → **Applications** → **Development** → **USB debugging**

- Tap **USB debugging** to toggle on (☒)/off (☐).
- If confirmation appears, follow onscreen instructions.

Enabling/Disabling Sleep Mode while Charging

In Home Screen, **MENU** → **Settings** → **Applications** → **Development** → **Stay awake**

- Tap **Stay awake** to toggle on (☒)/off (☐).

Enabling/Disabling Mock Locations

In Home Screen, **MENU** → **Settings** → **Applications** → **Development** → **Allow mock locations**

- Tap **Allow mock locations** to toggle on (☒)/off (☐).

Accounts & Sync Settings

Accounts & Sync Settings

+ Background Data

Enabling/Disabling Automatic Application Data Transmission in Background

In Home Screen, **MENU** → **Settings** → **Accounts & sync** → **Background data**

- Tap **Background data** to toggle on (☒)/off (☐).
- If confirmation appears, follow onscreen instructions.
- When enabled, inactive applications are also ready for automatic data transmission.
- Disable **Background data** to extend Battery Time.

+ Auto-sync

Setting Automatic Application Sync

In Home Screen, **MENU** → **Settings** → **Accounts & sync** → **Auto-sync**

- Tap **Auto-sync** to toggle on (☒)/off (☐).
- Enable **Background data** (☒) first.
- Disable **Auto-sync** to extend Battery Time.

+ Add Account

Adding Accounts

In Home Screen, **MENU** → **Settings** → **Accounts & sync** → **Add account** → Tap item → Follow onscreen instructions

Privacy Setting

Privacy Setting

+ Reset All

Deleting All Handset Files

In Home Screen, **MENU** → **Settings** → **Privacy** → **Reset all** → Enter Handset Code → **OK** → Read message → **Reset phone** → **Erase everything**

- Handset reboots after Reset all.
- To delete all SD Card files simultaneously, tap **Erase microSD** before tapping **Reset phone**.
- Reset all deletes all handset files including some preinstalled applications irreversibly. SD Card files are also deleted if **Erase microSD** is selected (☒).
- Back up important information before performing Reset all.

Language & Keyboard Settings

Language & Keyboard Settings

+ Select Language

Selecting Handset Interface Language

In Home Screen, **MENU** → **Settings** → **Language & keyboard** → **Select language** → Tap option

+ User Dictionary

Saving Words to User Dictionary

In Home Screen, **MENU** → **Settings** → **Language & keyboard** → **User dictionary** → **MENU** → **Add** → Enter word → **OK**

- Tap a saved word to edit/delete it.

+ iWnn IME - SH edition

Enabling/Disabling Key Tap Sound

In Home Screen, **MENU** → **Settings** → **Language & keyboard** → **iWnn IME - SH edition** → **Sound on key press**

- Tap **Sound on key press** to toggle on (☒)/off (☐).

Enabling/Disabling Key Tap Vibration

In Home Screen, **MENU** → **Settings** → **Language & keyboard** → **iWnn IME - SH edition** → **Vibrate on key press**

- Tap **Vibrate on key press** to toggle on (☒)/off (☐).

Enabling/Disabling Key Preview (Flick Input Guidance)

In Home Screen, **MENU** → **Settings** → **Language & keyboard** → **iWnn IME - SH edition** → **Key input guide**

- Tap **Key input guide** to toggle on (☒)/off (☐).

Selecting a Keyboard Skin

In Home Screen, **MENU** → **Settings** → **Language & keyboard** → **iWnn IME - SH edition** → **Keyboard image** → Tap option

Enabling/Disabling Flick Input

In Home Screen, **MENU** → **Settings** → **Language & keyboard** → **iWnn IME - SH edition** → **Flick input**

- Flick Input is to flick key for target character.
- Tap **Flick input** to toggle on (☒)/off (☐).
- Enable **Key input guide** (☒) to use key preview (Flick Input guidance).

Adjusting Flick Input Sensitivity

In Home Screen, **MENU** → **Settings** → **Language & keyboard** → **iWnn IME - SH edition** → **Flick sensitivity** → Drag slider to adjust sensitivity → **OK**

Enabling/Disabling Toggle Input while Flick Input is Enabled

In Home Screen, **MENU** → **Settings** → **Language & keyboard** → **iWnn IME - SH edition** → **Toggle input**

- Toggle Input is to toggle characters by tapping keys.
- Tap **Toggle input** to toggle on (☒)/off (☐).

Selecting Automatic Cursor Movement Option

In Home Screen, **MENU** → **Settings** → **Language & keyboard** → **iWnn IME - SH edition** → **Auto cursor move** → Tap option

+ Android Keyboard

Enabling/Disabling Key Tap Vibration

In Home Screen, **MENU** → **Settings** → **Language & keyboard** → **Android keyboard** → **Vibrate on keypress**

- Tap **Vibrate on keypress** to toggle on (☒)/off (☐).

Enabling/Disabling Key Tap Sound

In Home Screen, **MENU** → **Settings** → **Language & keyboard** → **Android keyboard** → **Sound on keypress**

- Tap **Sound on keypress** to toggle on (☒)/off (☐).


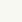
Enabling/Disabling Key Preview

In Home Screen, **MENU** → **Settings** → **Language & keyboard** → **Android keyboard** → **Popup on keypress**

- Tap **Popup on keypress** to toggle on (☒)/off (☐).

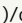
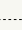
Enabling/Disabling Spelling Correction upon Tapping Letters

In Home Screen, **MENU** → **Settings** → **Language & keyboard** → **Android keyboard** → **Touch to correct words**

· Tap **Touch to correct words** to toggle on ()/off ().

Enabling/Disabling Auto Capitalization for English Typing

In Home Screen, **MENU** → **Settings** → **Language & keyboard** → **Android keyboard** → **Auto-capitalization**

· Tap **Auto-capitalization** to toggle on ()/off ().

Showing/Hiding Input Options Key

In Home Screen, **MENU** → **Settings** → **Language & keyboard** → **Android keyboard** → **Show settings key**

→ Tap option

Enabling/Disabling Voice Input

In Home Screen, **MENU** → **Settings** → **Language & keyboard** → **Android keyboard** → **Voice input**

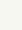
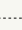
→ Tap option

· If confirmation appears, follow onscreen instructions.

Enabling/Disabling Input Language Switching by Dragging on Spacebar

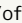
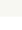
In Home Screen, **MENU** → **Settings** → **Language & keyboard** → **Android keyboard** → **Input languages**

→ Tap language

· Tap language to toggle on ()/off ().

Enabling/Disabling Word Suggestions

In Home Screen, **MENU** → **Settings** → **Language & keyboard** → **Android keyboard** → **Show suggestions**

· Tap **Show suggestions** to toggle on ()/off ().



Date & Time Settings

Date & Time Settings

+ Automatic

Setting Date Automatically


In Home Screen, **MENU** → **Settings** → **Date & time** → **Automatic**

· Tap **Automatic** to toggle on ()/off ().

+ Set Date

Setting Date Manually


In Home Screen, **MENU** → **Settings** → **Date & time** → **Set date** → **Select date** → **Set**

· Available when **Automatic** is off ().

+ Select Time Zone

Setting Time Zone Manually


In Home Screen, **MENU** → **Settings** → **Date & time** → **Select time zone** → Tap country/area

· Available when **Automatic** is off ().

+ Set Time

Setting Time Manually



In Home Screen, **MENU** → **Settings** → **Date & time** → **Set time** → **Select time** → **Set**

· Available when **Automatic** is off ().

+ Use 24-hour Format

Enabling/Disabling 24-hour Format

In Home Screen, **MENU** → **Settings** → **Date & time** → **Use 24-hour format**

· Tap **Use 24-hour format** to toggle on ()/off ().

+ Select Date Format

Changing Date Format

In Home Screen, **MENU** → **Settings** → **Date & time** → **Select date format** → Tap option

About Phone

About Phone

+ Status

Confirming Handset Status

In Home Screen, **MENU** → **Settings** → **About phone** → **Status**

+ Battery Use

Confirming Battery Status/Usage Time

In Home Screen, **MENU** → **Settings** → **About phone** → **Battery use** → Tap item

· For some items, related function/setting name (e.g., **Display settings** for Display) appears in details window; tap it for settings.

+ Adjust Touch Panel

Calibrating Touch Panel

In Home Screen, **MENU** → **Settings** → **About phone** → **Adjust touch panel** → Follow onscreen instructions

+ Adjust Sensitivity of Sensor

Calibrating Motion & Electromagnetic Sensors

In Home Screen, **MENU** → **Settings** → **About phone** → **Adjust sensitivity of sensor** → **OK** → Follow onscreen instructions (tone sounds when calibration completes) → **OK**

+ Software Update

Confirming Firmware Updates & Downloading as Required

In Home Screen, **MENU** → **Settings** → **About phone** → **Software update** → **Software update** → **Execute** → Follow onscreen instructions

· See "Software Update" beforehand.

Enabling/Disabling Automatic Updates

In Home Screen, **MENU** → **Settings** → **About phone** → **Software update** → **Auto update settings** → **Update automatically** or **Do not update automatically**

Changing Automatic Update Start Time

In Home Screen, **MENU** → **Settings** → **About phone** → **Software update** → **Update time settings** → **Select time** → **Set**

+ Major Update

Checking for a New Version of Android Operating System Manually



In Home Screen, **MENU** → **Settings** → **About phone** → **Major Update** → **Confirm update** → Follow onscreen instructions

Upgrading Android Operating System

In Home Screen, **MENU** → **Settings** → **About phone** → **Major Update** → **Start update** → Follow onscreen instructions

· Available when a new version of Android operating system is released.

Enabling/Disabling Automatic Update Check (SoftBank 102SH)

In Home Screen, **MENU** → **Settings** → **About phone** → **Major Update** → **Check for updates** · Tap **Check for updates** to toggle on ()/off ().

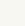
+ Legal Information

Reading Copyright, Usage Terms, Etc.

In Home Screen, **MENU** → **Settings** → **About phone** → **Legal information** → Tap item

+ Technical Regulations Conformity Certification

Opening Technical Regulations Conformity Certification Information (, Etc.)

Handset complies with requirements as stipulated by the Radio Law and Telecommunications Business Law. Follow these steps to confirm Technical Regulations Conformity Certification information ( , etc.):

In Home Screen, **MENU** → **Settings** → **About phone** → **Technical Regulations Conformity Certification**

+ Model Number

Confirming Model Number

In Home Screen, **MENU** → **Settings** → **About phone**

· See below **Model number** .

+ Android Version

Confirming Android Operating System Version

In Home Screen, **MENU** → **Settings** → **About phone**

· See below **Android version** .

+ Baseband Version

Confirming Baseband Version

In Home Screen, **MENU** → **Settings** → **About phone**

· See below **Baseband version** .

+ Kernel Version

Confirming Kernel Version

In Home Screen, **MENU** → **Settings** → **About phone**

· See below **Kernel version** .

+ Build Number

Confirming Build Number

In Home Screen, **MENU** → **Settings** → **About phone**

· See below **Build number** .

Appendix

Specifications.....	96
Customer Service.....	97

Specifications

Handset

Item	Description
Weight	106 g (137 g with battery) ¹
Continuous Talk Time ²	3G: 450 minutes ¹ GSM: 380 minutes ¹
Continuous Standby Time ³	3G: 420 hours ¹ GSM: 390 hours ¹
Continuous One Seg Reception Time ⁴	4.5 hours ¹
Charging Time ⁵	240 minutes ¹
Size	65 x 128 x 9.8 mm (without protruding parts) ¹
Maximum Output	3G: 0.25 W GSM: 2.0 W

- 1 Approximate value.
- 2 Continuous Talk Time is an average measured with a new, fully charged battery, in strong signal conditions without moving handset.
- 3 Continuous Standby Time is an average measured with a new, fully charged battery, without calls or operations, in strong signal conditions without moving handset. The value is calculated with Data transmission and Urgent News disabled. Standby Time may vary with environment (e.g., battery strength, ambient temperature), settings, etc.
- 4 Continuous One Seg Reception Time is measured with a new, fully charged battery, with AV mode set to OFF, Eco Backlight Control enabled, Sound setting set to OFF and Smooth mode set to ON, using Headphones with Microphone (sold separately), until battery runs low (10% of capacity).
- 5 Charging Time is measured with Power off using AC Charger.
- Talk Time, Standby Time and One Seg Reception Time when Eco Backlight Control is enabled and Brightness (Display settings) is set to approximately half of maximum (11 of 21).
 - Talk Time/Standby Time/One Seg Reception Time may vary with location, status, settings, etc.
 - Display employs precision technology, however, some pixels may remain on/off.

Battery

Item	Description
Voltage	3.7V
Battery Type	Lithium-ion
Capacity	1,520 mAh
Size (W x H x D)	45.0 x 57.0 x 5.4 mm (without protruding parts) ¹
Materials/Finishing	PC and PA resin/Gold plating

1 Approximate value.

Desktop Holder

Item	Description
Input Voltage/Current	DC 5.4V/700 mA
Output Voltage/Current	DC 5.4V/700 mA
Charging Temperature	5°C to 35°C
Size (W x H x D)	145 x 38 x 50 mm ¹
Materials/Finishing	ABS resin/Gold plating

1 Approximate value.

Customer Service

For information about SoftBank handsets or services, contact us at the following numbers.

SoftBank Customer Support



General Information

From a SoftBank handset, dial toll free at 157
From a landline/IP phone, dial toll free at 0800-919-0157



Customer Assistance (Repairs/Lost Handsets)

From a SoftBank handset, dial toll free at 113
From a landline/IP phone, dial toll free at 0800-919-0113
If you cannot reach a toll free number, use the number (charges apply) below for your service area:
Hokkaido Area, Tohoku Area, Hokuriku Area, Kanto-Koshinetsu Area: 022-380-4380
Tokai Area: 052-388-2002
Kansai Area: 06-7669-0180
Chugoku-Shikoku Area, Kyushu-Okinawa Area: 092-687-0010

Smartphone Technical Support Center

From a SoftBank handset, dial toll free at 151
From a landline/IP phone, dial toll free at 0800-1700-151

SoftBank Mobile Global Call Center

From outside Japan, dial +81-3-5351-3491 (toll free from SoftBank handsets)
If handset is lost/stolen, call this number immediately (international charges apply)

Safety Precautions




Safety Precautions.....	100
Important Product Information.....	107
Handset & Hardware Care.....	109
General Notes.....	110
FCC Notice.....	112
Specific Absorption Rate (SAR).....	113
Water & Dust Resistance.....	113

Safety Precautions







Read Safety Precautions before using handset.
Observe precautions to avoid injury to self or others, or damage to property.
SoftBank Mobile is not liable for any damages resulting from use of this product.

Safety Precautions

These labels show degree of risk from improper use; learn them before reading on:


Label	Description
 DANGER	Great risk of death or serious injury
 WARNING	Risk of death or serious injury
 CAUTION	Risk of minor injury or damage to property

These symbols signify prohibited/compulsory actions; learn them before reading on:

Symbol	Description
 Prohibited	Prohibited actions
 Do Not Disassemble	Disassembly prohibited
 Avoid Liquids Or Moisture	Exposure to liquids prohibited
 Do Not Use Wet Hands	Use with wet hands prohibited
 Compulsory	Compulsory actions
 Disconnect Power Source	Unplug from outlet


Handset, Battery, USIM Card, Desktop Holder, Micro USB Cable, Micro USB Charging Adapter, AC Charger (Sold Separately) & SD Card

DANGER


Compulsory


Use specified battery, Desktop Holder, Micro USB Cable, Micro USB Charging Adapter and Charger only.

Non-specified equipment use may cause battery to leak, overheat, burst or ignite, and may cause Charger to overheat, ignite, malfunction, etc.


Do Not Disassemble


Do not disassemble, modify or solder handset or related hardware.

May cause fire, injury, electric shock or malfunction. Battery may leak, overheat, burst or ignite. Modifying handsets is prohibited by the Radio Law and subject to a penalty.


Avoid Liquids Or Moisture


Do not expose internal handset parts, battery, Desktop Holder or Charger to liquids.

Do not let exposed internal parts remain wet; do not charge wet battery. May cause overheating, electric shock, fire, injury or malfunction. Use only as directed.


Prohibited

Do not charge battery in or expose handset or related hardware to extreme heat (fire, heat sources, direct sunlight, inside vehicles, etc.). Do not charge, leave, use, or be carrying handset or related hardware in a warm place or where heat collects, such as under a kotatsu (blanketed warming table) or electric blanket, next to a kairo (worn warming patch), etc.

May cause warping/malfunction; battery may leak, overheat, ignite or burst. Handset or related hardware may become hot to the touch, leading to burn injuries, etc.


Prohibited

Do not force battery/Charger into handset. Confirm terminal/connector orientation; retry.

Battery may leak, overheat, burst, ignite, etc.

⚠ WARNING



Prohibited

Do not place handset, battery, Desktop Holder or Charger in/on ovens, microwave ovens, pressure cookers, induction stoves or other cooking appliances.

Battery may leak, overheat, burst or ignite. Handset/Charger may overheat, emit smoke, ignite, malfunction, etc.



Compulsory

Keep handset off and Charger disconnected near gas stations or places with fire/explosion risk.

Handset use near petrochemicals or other flammables may cause fire/explosion; power off before using Osaifu-Keitai® at gas stations (cancel Osaifu-Keitai Lock beforehand).



Prohibited

Do not drop/throw or apply strong impacts.

Battery may leak, overheat, burst or ignite, resulting in fire, electric shock, malfunction, etc.



Compulsory

For unusual sound/odor, smoke or other abnormality:

Continued use may cause fire, electric shock, etc.; grasp plug to disconnect Charger, power off, then remove battery, being careful not to burn or injure yourself.



Prohibited

Keep liquid (water, pet urine, etc.) or conductive material (pencil lead, metal strip/jewelry, etc.) away from charging terminals or External Connector Port.

May cause short circuit, resulting in fire, malfunction, etc.



Prohibited

Do not charge battery while handset is wet.

May cause electric shock or short circuit, resulting in fire, malfunction, etc.



Prohibited

Do not expose handset or related hardware to hot air from dryers, etc. to dry them or for other purposes. Avoid saunas or hot water.

Battery may leak, overheat, burst or ignite. Handset, Desktop Holder or Charger may overheat, emit smoke, ignite, malfunction, etc.

⚠ CAUTION



Prohibited

Do not place handset or related hardware on unstable surfaces.

Handset or related hardware may fall, resulting in injury, malfunction, etc.; take added care when Vibration is set or while charging.



Compulsory

Keep handset and related hardware out of infants' reach.

Infants may choke from swallowing handset or related hardware or be injured, etc.



Compulsory

For use of handset/related hardware by child, explain instructions and supervise use.


Misuse may cause injury, etc.

Battery

 **DANGER**


Read battery label to confirm battery type; use/dispose of battery accordingly.

Symbol on Label	Battery Type
Li-ion00	Lithium-ion


Prohibited


Do not dispose of battery in fire.

Battery may leak, burst, ignite, etc.


Prohibited


Do not damage (nail, hammer, stomp, etc.) battery or subject it to strong impacts.

Battery may leak, overheat, burst, ignite, etc.


Prohibited

Keep wire or other metal objects away from battery terminals. Do not carry/store battery with conductive material (pencil lead, metal strip/jewelry, etc.).


Battery may leak, overheat, burst, ignite, etc.


Compulsory

If battery fluid gets in eyes, do not rub; rinse with water and consult a doctor immediately.


Eyes may be severely damaged.

 **WARNING**


Compulsory


If battery fluid contacts skin or clothes, discontinue handset use and rinse with clean water immediately.

May cause skin damage.


Compulsory


If battery does not charge properly, stop trying.

Battery may leak, overheat, burst, ignite, etc.


Compulsory

For abnormal odor, excessive heat, discoloration or distortion, remove battery, being careful not to burn or injure yourself. Avoid fire sources.


Continued use may cause battery to leak, overheat, burst, ignite, etc.


Compulsory

Keep battery away from pets.

Pet bites may cause battery to leak, burst, overheat, ignite, etc.

 **CAUTION**


Prohibited

Do not dispose of an exhausted battery with ordinary refuse.

Tape over battery terminals before disposal. Take battery to a SoftBank Shop, or follow the local disposal regulations.

Handset

WARNING



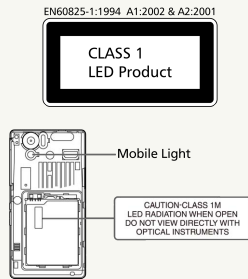
Prohibited

Do not shine Mobile Light in eyes.

May temporarily affect eyesight or startle, leading to accidents.

CAUTION:

Use of controls, adjustments or performance of procedure other than those specified herein may result in hazardous radiation exposure. As the emission level from Mobile Light LED used in this product is harmful to the eyes, do not attempt to disassemble the cabinet. Service is limited to authorized service centers only.



■ Mobile Light LED Properties

a) Emission Duration: Continuous

b) Wavelength

White: 400 - 700 nm

Red: 600 - 670 nm (center wavelength: 631 nm)

c) Maximum Emission Output

White: 400 μ W (1.2 mW inside handset)

Red: 190 μ W (890 μ W inside handset)



Prohibited

Do not use handset while driving or cycling.

Accidents may result. Phone use while driving or cycling is prohibited by law and subject to a penalty; park legally beforehand.



Compulsory

Power off near electronic devices that employ high precision control systems or weak signals.

May cause electronic malfunctions, etc. Take added care near these devices: Hearing aids, implanted pacemakers/ defibrillators and other electronic medical equipment; fire alarms, automatic doors and other automatic control devices.



Compulsory

Power off before boarding aircraft to avoid possible radio wave interference with aircraft operations.

If mobile phone use is allowed on board, follow airline or cabin crew instructions regarding handset use.



Compulsory

Users with a heart condition should adjust ringtone Vibration and Volume as needed.

May cause heart damage.



Compulsory

If thunder is audible while outdoors, power off; find cover.

There is a risk of lightning strike or electric shock.



Prohibited

Do not look into Infrared Port during infrared transmissions.

Eyesight may be affected.

⚠ CAUTION

Prohibited

Do not use handset when it may affect a vehicle's electronic equipment.

Handset use inside vehicles may cause electronic equipment to malfunction, resulting in accidents.



Compulsory

For any skin irritation associated with use, discontinue use and consult a doctor.

Metal and other materials may cause skin irritation, rashes, or itchiness depending on your physical condition.



Prohibited

Keep handset away from magnetic cards, etc.

Data on bank cards, credit cards, telephone cards, floppy disks, etc. may be lost.



Prohibited

Do not swing handset by strap or TV Antenna.

May harm self or others; strap may break, resulting in injury or handset malfunction/breakage.



Compulsory

Handset may become hot while in use, especially at high temperature.

Prolonged contact with skin may cause burn injuries.



Prohibited

Always maintain some distance from Speaker while ringtones, music or other handset sounds play.

Excessive volume may damage ears or hearing.



Compulsory

Watch One Seg from a distance in good light.

Watching in poor light or too close may affect eyesight.



Compulsory

Moderate handset volume when using Headphones.

Excessive volume may damage ears or hearing.

Desktop Holder & AC Charger (Sold Separately)**⚠ WARNING**

Prohibited

Do not cover/wrap Charger/Desktop Holder while charging.

Charger/Desktop Holder may overheat, resulting in fire, malfunction, etc.



Prohibited

Use only the specified voltage.

Non-specified voltages may cause fire, malfunction, etc.

- AC Charger: AC 100V-240V Input
- In-Car Charger (use in negative earth vehicles only): DC 12V/24V Input

Do not use power adapters. Transformer use may cause fire, electric shock or malfunction.



Disconnect Power Source

Unplug Charger for periods of disuse; grasp plug to disconnect.

May cause electric shock, fire or malfunction.



Disconnect Power Source

If liquid (water, pet urine, etc.) gets inside, grasp plug to disconnect it immediately.

May cause electric shock, smoke or fire.



Compulsory

To remove debris, grasp plug to disconnect Charger, then clean with dry cloth.

Fire may result.



Compulsory

Plug Charger firmly into the outlet, keeping plug and Charger/Desktop Holder charging terminals away from conductive material (pencil lead, metal strip/jewelry, etc.).

May cause electric shock, short circuit, fire, etc.



Do Not Use Wet Hands

Do not touch plug with wet hands.

May cause electric shock, malfunction, etc.



Prohibited

Do not touch Charger if thunder is audible.

May cause electric shock, etc.



Prohibited

Do not use Desktop Holder inside vehicles.

Extreme temperature or vibration may cause fire or damage handset, etc.



Prohibited

Do not expose Desktop Holder or Charger to moisture (precipitation, bath/shower, etc.).

May cause fire, electric shock or malfunction.



Prohibited

Do not use In-Car Charger in positive earth vehicles.

May cause fire, etc. Use in negative earth vehicles only.



Compulsory

Use only the specified fuse for In-Car Charger.

Non-specified fuse may cause fire or malfunction. See In-Car Charger manual for details.

CAUTION



Disconnect Power Source

Grasp plug to disconnect Charger before cleaning.

May cause electric shock, etc.



Compulsory

Always grasp plug (not cord) to disconnect Charger.

Pulling plug by cord may damage cord; cause electric shock, fire, etc.



Prohibited

Do not subject Charger to strong impacts while it is plugged in.

May cause malfunction or injury.



Prohibited

Do not touch charging terminals of Desktop Holder while it is connected to the outlet.

May cause burn injuries.

Micro USB Cable & Micro USB Charging Adapter

CAUTION



Compulsory

For any skin irritation associated with use, discontinue use and consult a doctor.

Metal and other materials may cause skin irritation, rashes, or itchiness depending on your physical condition.

Handset Use & Electronic Medical Equipment

This section is based on "Guidelines on the Use of Radio Communications Equipment such as Cellular Telephones and Safeguards for Electronic Medical Equipment" (Electromagnetic Compatibility Conference, April 1997) and "Report of Investigation of the Effects of Radio Waves on Medical Equipment, etc." (Association of Radio Industries and Businesses, March 2001).

⚠ WARNING



Compulsory

Persons with implanted pacemaker/defibrillator should keep handset more than 22 cm away.

Radio waves may interfere with implanted pacemakers or defibrillators.



Compulsory

If you intend to use electronic medical equipment other than implanted pacemaker/defibrillator outside medical facilities, consult the vendor on radio wave effects.

Radio waves may interfere with electronic medical equipment.



Compulsory

Power off in crowds or trains where persons with implanted pacemaker/defibrillator may be near.

Radio waves may interfere with implanted pacemakers or defibrillators causing such devices to malfunction.



Compulsory

Observe these rules inside medical facilities to avoid effects of radio waves on electronic medical equipment:

- Do not enter an operating room or an Intensive or Coronary Care Unit while carrying a handset.
- Keep handset off in hospitals.
- Even in lobbies or other places where handset use is permitted, keep handset off near electronic medical equipment.
- Obey medical facility rules on mobile phone use.

3D Images

⚠ CAUTION



Prohibited

Users with a history of photosensitivity, a heart condition or sleep loss/fatigue, under the influence of alcohol, or in poor physical condition for other reasons, should avoid viewing 3D images.

May worsen the condition.



Compulsory

Stop viewing 3D images if they appear blurry or three-dimensional space is hard to perceive.

Continued use may cause eye strain.



Compulsory

Stop viewing 3D images if you experience fatigue or discomfort (motion sickness or other similar symptoms).

May affect physical condition; rest as needed. Take added care aboard trains or in vehicles where Display tends to shake.



Compulsory

3D image viewing is suitable for ages seven or over.

Children may not show clear signs of fatigue or discomfort; may suddenly become sick while viewing 3D images. Supervise use and watch for signs of eye strain.



Compulsory

Rest your eyes after approximately 30 minutes of 3D image viewing.

Prolonged viewing may cause eye strain.



Compulsory

Look straight into Display when viewing 3D images.

Viewing from an angle may cause eye strain.

Hold handset in front and keep it approximately 27 cm away from face; images appear with an illusion of depth.

Important Product Information

General Use

- If your USIM Card or handset (with USIM Card inserted) is lost or stolen, suspend your service immediately. For details, contact SoftBank Customer Support, [General Information](#).
- SoftBank Mobile is not liable for any damages resulting from accidental loss/alteration of handset/SD Card files or settings. Keep separate copies of contacts, etc.
- Handset transmissions/One Seg reception may be disrupted inside buildings, tunnels or underground, or when moving into/out of such places.
- Use handset without disturbing others.
- Handsets are radios as stipulated by the Radio Law. Under the Radio Law, handsets must be submitted for inspection upon request.
- Handset use near landlines, TVs or radios may cause interference.
- Beware of eavesdropping.
Because this service is completely digital, the possibility of signal interception is greatly reduced. However, some transmissions may be overheard.
Eavesdropping
Deliberate/accidental interception of communications constitutes eavesdropping.
- Beware of harmful/malicious websites. Take added care when posting personal information, etc.
- An export license may be required to carry handset into other countries if it is to be used by or transferred to another person. However, no such license is required when you take handset abroad for personal use on a vacation or business trip and then bring it back. Export control regulations in the United States provide that an export license granted by the US government is required to carry handset into Cuba, Iran, North Korea, Sudan or Syria.

Heat from Handset Use

- Handset internal temperature may increase depending on usage or environment; cause housing to heat up. (Handset may stop charging or adjust Display brightness for safety.) After a period of handset use under such condition, warning appears and handset shuts down after approximately three minutes. To lower internal temperature and prevent automatic shutdown, close all applications and activate Sleep mode.
- After a period of Camera use at high internal temperature, warning appears and handset automatically shuts down after approximately one minute. (Captured photo/recorded video is saved.)

Camera

- Mind your manners when using Camera.
- Test Camera before capturing/recording special moments.
- Do not use Camera in places where photography or videography is prohibited.
- Captured images may not be used/transferred without copyright holder (photographer, etc.) permission, except for personal use.

3D Conversion

Images (shot with Camera or obtained from other sources) whose copyright belongs to others are limited to private use only even after converting to 3D on handset. Use of such images beyond this limit may constitute copyright infringement.

3D Image Viewing

- Perception of 3D effects varies from person to person.
- Keep Display parallel to your eyes while viewing 3D images.

In-Call/Transmission Cautions

- During calls/transmissions, calling/transmission charges/fees apply even if other functions or operations are simultaneously in use.
- Transmissions involving JavaScript or Flash® may incur high charges.

Urgent News (Application)

- By default, handset receives earthquake alerts (Urgent News Incoming Setting is active).
- Alert tones sound even in Manner mode.
- Alerts are not received during calls/transmissions or in poor signal conditions.
- Depending on usage/situation, handset may receive alerts for other areas or no alerts.
- Standby Time may decrease when Urgent News Incoming Setting is active.
- SoftBank Mobile cannot be held liable for any damages associated with this service, including accidents resulting from received information, reception timing or reception failure.

Wi-Fi (Wireless LAN)

Wireless LAN (hereafter "Wi-Fi") uses radio waves to enable communication between compatible devices, thus allowing connection to a local area network from anywhere within the range. However, there is a risk of data interception unless security is established. It is advisable for the user to configure security settings on their own responsibility before using Wi-Fi.

- Do not use Wi-Fi near electrical appliances, audiovisual equipment or office automation equipment; may affect Wi-Fi transmission speed, availability, clarity, etc. (There is a possibility of interference especially when a microwave oven is in use.)
- The target access point may not be detected correctly if there are multiple access points nearby.

■Precautions

The frequency band utilized by handset Wi-Fi is shared with industrial, scientific or medical equipment, including household microwave ovens, etc., and used by radio stations, amateur radio stations, etc. (hereafter "other radio stations").

- 1 Before using Wi-Fi, visually confirm that no other radio stations sharing the same frequency band are in use nearby.
- 2 Should interference occur between handset and other radio stations, move or disable Wi-Fi immediately.
- 3 For additional information and support, contact SoftBank Customer Support, General Information: From a SoftBank handset, call toll free at 157. To call toll free from a landline/IP phone, see "[Customer Service](#)."

Frequency Band

This radio station utilizes 2.4 GHz band with DSSS-OFDM modulation. Maximum transmission radius is 40 meters (131 feet).



■Simultaneous Use with Bluetooth®

Wi-Fi (IEEE 802.11b/g/n) and Bluetooth® transmit on the 2.4 GHz band. Enabling handset Bluetooth® or using Bluetooth® devices near handset may affect Wi-Fi transmission speed, availability and clarity. Should interference occur, cancel handset Bluetooth® or discontinue Bluetooth® device use.

- Handset supports Wi-Fi channels 1 - 13. Handset will not connect to access points set to other channels.
- Available channels vary by country.
- For use of Wi-Fi aboard aircraft, check with airline beforehand.
- In some countries/regions, such as France, there are restrictions on the use of Wi-Fi. If you intend to use Wi-Fi on handset abroad, confirm the local laws and regulations beforehand.

Bluetooth® Function

SoftBank Mobile is not liable for any damages resulting from data/information leakage due to use of handset Bluetooth® function.

■Precautions

The frequency band utilized by handset Bluetooth® function is shared with industrial, scientific or medical equipment, including household microwave ovens, etc., and used by radio stations, amateur radio stations, etc. (hereafter "other radio stations").

1 Before using Bluetooth®, visually confirm that no other radio stations sharing the same frequency band are in use nearby.

2 Should interference occur between handset and other radio stations, move or cancel Bluetooth® function immediately.

3 For additional information and support, contact SoftBank Customer Support, General Information: From a SoftBank handset, call toll free at 157. To call toll free from a landline/IP phone, see "[Customer Service](#)."

Frequency Band

This radio station utilizes 2.4 GHz band with FHSS modulation. Maximum transmission radius is 10 meters (32 feet). It is not possible for the radio station to avoid using the frequency band of the mobile unit identification apparatus.



Handset & Hardware Care

Handset & Hardware Care

- If handset is left with no battery or an exhausted one, data may be altered/lost. SoftBank Mobile is not liable for any resulting damages.
- Use handset within 5°C - 35°C (up to 40°C for brief periods in bath/shower rooms, etc.) and 35% - 90% humidity.
- Avoid extreme temperature or direct sunlight.
- Handset/battery may warm during operation or while charging. This is normal.
- Warranty does not cover malfunctions resulting from misuse.
- Exposing lens to direct sunlight may damage color filter and affect image color.
- Battery may not charge properly if port/terminals are obstructed by dust, etc. Clean with dry cloth, cotton swab, etc.
- Clean handset with soft dry cloth. Alcohol/solvent use may fade color/label.
- Avoid scratching Display.
- Avoid heavy objects or excessive pressure. May cause malfunction or injury.
 - Do not sit on handset in back pants pocket.
 - Do not place heavy objects on handset inside handbags, packs, etc.
- Connect only specified products to Port. Other devices may malfunction or cause damage.
- Always power off before removing battery. If battery is removed while saving data or sending mail, data may be lost, changed or destroyed.
- Do not power off while using SD Card; may result in data loss or malfunction.
- When walking outside, moderate handset volume to avoid accidents.
- Avoid covering Speaker while using handset.

Touch Panel

- Touch Panel may not respond in these situations:
 - Use with gloves/long fingernails
 - Use of pens, pencils or sharp objects
 - Use with objects on/against Display
- To prevent malfunctions, do not:
 - Touch Display with wet fingers
 - Use if Display is wet
 - Subject Display to force/pressure
 - Place labels or stickers over Display
- If Display is wet, wipe it with soft cloth.
- To improve response, calibrate Touch Panel as follows:

MENU ➔ **Settings** ➔ **About phone** ➔ **Adjust touch panel** ➔ Follow onscreen instructions
- Press **[Power]** to activate Sleep mode, then press **[Power]** again to cancel it when:
 - Handset operates automatically without touch input
 - Handset does not respond to touch input

Headphones

Headphones with Microphone (SHLDL1) is available for separate purchase. Other headphone mics may not function properly on handset.

- Do not subject Headphone Jack to strong impacts while using Headphones with Microphone; water/dust resistance may be affected.

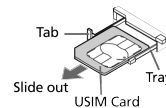
TV Antenna (Retractable)

Pull Antenna by top part fully. After use, gently retract Antenna aligning top and bottom parts. Do not carry handset with Antenna extended; damage may result.

USIM Tray

Do not apply excessive force to USIM Tray; may result in breakage.

- Remember these points when inserting/removing USIM Card:
 - Pull out USIM Tray slowly and gently
 - Insert USIM Card with IC Chip up
 - After inserting USIM Card, push in USIM Tray until it stops
 - When removing USIM Card, slide it out of USIM Tray



Attaching Straps

Removing Battery Cover may make it easier to attach straps.

When Handset Freezes

If handset has stopped processing or won't respond to touch/ key press, restart it as follows:

Remove battery ➔ Wait a few seconds ➔ Install battery ➔ **[Power]** (Long)

Resetting Handset

Reset all deletes all handset files irreversibly. (Some preinstalled applications are also deleted.) To delete all SD Card files simultaneously, select **Erase microSD** before tapping **Reset phone**.


MENU ➔ **Settings** ➔ **Privacy** ➔ **Reset all** ➔ Enter Handset Code ➔ **OK** ➔ **Reset phone** ➔ **Erase everything**

Picasa™ Web Albums Synchronization

Save a Google™ Account associated with Picasa Web Albums to handset. If you save a Google Account to handset then create a Picasa Web Albums account with that Google Account, corresponding Picasa Web Albums is unsynchronizable on handset.

Extending Battery Time

MENU → Settings → Energy saving settings → Waza-ari or Emergency → OK

- If confirmation appears, follow onscreen instructions.
- Use three modes (Normal , Waza-ari and Emergency) as needed.
- For Waza-ari and Emergency , some functions/settings are limited or disabled. Emergency minimizes Brightness and disables Wi-Fi, GPS and some other transmissions.
- Tap Edit or Check to change/check settings of each mode. To apply changes, return to Energy save menu and tap corresponding mode.
- Energy save stndby disables some applications that run in the background when Sleep mode is active. (Some applications may not run properly when Sleep mode is active.) Follow these steps to specify applications to disable/enable:
 - ⓘ (next to Energy save stndby) → Advanced
 - ☐ or ☑ (applications with ☑ remain active)
- Some applications that establish periodic network connections do not start communication after switching back to Normal from Waza-ari or Emergency . In this case, Long Press  , then restart handset.

General Notes

Portrait Rights

Portrait rights protect individuals' right to refuse to be photographed or to refuse unauthorized publication/use of their photographs. Portrait rights consist of the right to privacy, which is applicable to all persons, and the right to publicity, which protects the interests of celebrities. Therefore, photographing others including celebrities and publicizing/distributing their photographs without permission is illegal; use Camera responsively.

Copyrights

Copyright laws protect sounds, images, computer programs, databases, other materials and copyright holders. Duplicated material is limited to private use only. Use of materials beyond this limit or without copyright holder permission may constitute copyright infringement, and be subject to criminal punishment. Comply with copyright laws when using images captured with Camera.

Some applications are not installed on SoftBank 102SH/102SHll.

The software contained in handset is copyrighted material; copyright, moral right and other related rights are protected by copyright laws. Do not copy, modify, alter, disassemble, decompile or reverse-engineer the software; do not separate it from hardware in whole or part.

Open Source Software

- Handset contains software based on GNU General Public License (GPL), GNU Lesser General Public License (LGPL), and other licenses.

To confirm details of relevant software licenses:

MENU → Settings → About phone → Legal information → Open source licenses

- The source code of software based on GPL, LGPL, and Mozilla Public License (MPL) is provided on the following website free of charge.
<https://sh-dev.sharp.co.jp/android/modules/oss/> (Japanese)

Electromagnetic Waves

For body-worn operation, this phone has been tested and meets RF exposure guidelines when used with accessories containing no metal, that position handset a minimum of 15 mm from the body. Use of other accessories may not ensure compliance with RF exposure guidelines.

CE Declaration of Conformity

In some countries/regions, such as France, there are restrictions on the use of Wi-Fi. If you intend to use Wi-Fi on the handset abroad, confirm the local laws and regulations beforehand.

Hereby, Sharp Telecommunications of Europe Ltd, declares that 102SH/102SHII is in compliance with the essential requirements and other relevant provisions of Directive 1999/5/EC.

A copy of the original declaration of conformity for each model can be found at the following Internet address: <http://www.sharp.co.jp/k-tai/>

CE 0168

Battery Cautions

Use specified battery or Charger only.

Non-specified equipment use may cause malfunctions, electric shock or fire due to battery leakage, overheating or bursting. Do not dispose of an exhausted battery with ordinary refuse; always tape over battery terminals before disposal. Take battery to a SoftBank Shop, or follow the local disposal regulations.

Charge battery in ambient temperature 5°C - 35°C; battery may leak/overheat and performance may deteriorate outside this range.

European RF Exposure Information

Your mobile device is a radio transmitter and receiver. It is designed not to exceed the limits for exposure to radio waves recommended by international guidelines. These guidelines were developed by the independent scientific organization ICNIRP and include safety margins designed to assure the protection of all persons, regardless of age and health. The guidelines use a unit of measurement known as the Specific Absorption Rate, or SAR. The SAR limit for mobile devices is 2 W/kg and the highest SAR value for 102SH and 102SHII when tested at the ear was 0.486 W/kg*. As mobile devices offer a range of functions, they can be used in other positions, such as on the body as described in this use guide**. In this case, the highest tested SAR value is 0.467 W/kg. As SAR is measured utilizing the device's highest transmitting power the actual SAR of this device while operating is typically below that indicated above. This is due to automatic changes to the power level of the device to ensure it only uses the minimum level required to reach the Network. The World Health Organization has stated that present scientific information does not indicate the need for any special precautions for the use of mobile devices. They note that if you want to reduce your exposure then you can do so by limiting the length of calls or using a handsfree device to keep the mobile phone away from the head and body.

*The tests are carried out in accordance with international guidelines for testing.

**Please see "Electromagnetic Waves" for important notes regarding body-worn operation.

Headphone Signal Level

The maximum output voltage for the music player function, measured in accordance with EN 50332-2, is 17.0 mV.

FCC Notice

This device complies with part 15 of the FCC Rules. Operation is subject to the following two conditions:

(1) This device may not cause harmful interference, and (2) this device must accept any interference received, including interference that may cause undesired operation.

Changes or modifications not expressly approved by the manufacturer responsible for compliance could void the user's authority to operate the equipment.

FCC Information to User

This equipment has been tested and found to comply with the limits of a Class B digital device, pursuant to Part 15 of the FCC Rules. These limits are designed to provide reasonable protection against harmful interference in a residential installation. This equipment generates, uses and can radiate radio frequency energy and, if not installed and used in accordance with the instructions, may cause harmful interference to radio communications.

However, there is no guarantee that interference will not occur in a particular installation; if this equipment does cause harmful interference to radio or television reception, which can be determined by turning the equipment off and on, the user is encouraged to try to correct the interference by one or more of the following measures:

1. Reorient/relocate the receiving antenna.
2. Increase the separation between the equipment and receiver.
3. Connect the equipment into an outlet on a circuit different from that to which the receiver is connected.
4. Consult the dealer or an experienced radio/TV technician for help.

FCC RF Exposure Information

Your handset is a radio transmitter and receiver. It is designed and manufactured not to exceed the emission limits for exposure to radio frequency (RF) energy set by the Federal Communications Commission of the U.S. Government.

The guidelines are based on standards that were developed by independent scientific organizations through periodic and thorough evaluation of scientific studies. The standards include a substantial safety margin designed to assure the safety of all persons, regardless of age and health. The exposure standard for wireless handsets employs a unit of measurement known as the Specific Absorption Rate, or SAR. The SAR limit set by the FCC is 1.6 W/kg.

The tests are performed in positions and locations (e.g. at the ear and worn on the body) as required by the FCC for each model.

The highest SAR value for 102SH and 102SHll as reported to the FCC when tested for use at the ear is 0.315 W/kg, and when worn on the body in a holder or carry case, is 0.576 W/kg.

This device was tested for typical body-worn operations with the back of the handset kept 1.0 cm from the body. To maintain compliance with FCC RF exposure requirements, use accessories that maintain a 1.0 cm separation distance between the user's body and the back of the handset. The use of beltclips, holsters and similar accessories should not contain metallic components in its assembly.

The use of accessories that do not satisfy these requirements may not comply with FCC RF exposure requirements, and should be avoided.

The FCC has granted an Equipment Authorization for this model handset with all reported SAR levels evaluated as in compliance with the FCC RF emission guidelines. SAR information on this model handset is on file with the FCC and can be found at <http://www.fcc.gov/oet/fccid> under the Display Grant section after searching the corresponding FCC ID (APYHRO00157).

Additional information on Specific Absorption Rates (SAR) can be found on the Cellular Telecommunications & Internet Association (CTIA) Website at <http://www.ctia.org>.

Specific Absorption Rate (SAR)

Specific Absorption Rate (SAR)

SoftBank 102SH and 102SHII meet the government's requirements for exposure to radio waves.

These requirements are based on scientific basis to assure that radio waves emitted from mobile phones and other handheld wireless devices do not affect human health. They require that the Specific Absorption Rate (SAR), which is the unit of measurement for the amount of radiofrequency absorbed by the body, shall not exceed 2 W/kg*. This limit includes a substantial safety margin designed to assure the safety of all persons, regardless of age or health, and meets the international standard set by International Commission on Non-Ionizing Radiation Protection (ICNIRP) in cooperation with World Health Organization (WHO).

The highest SAR value is 0.449 W/kg for SoftBank 102SH, and 0.456 W/kg for SoftBank 102SHII. SAR tests were conducted with handset transmitting at its highest certified power level in accordance with testing methods set by the government. While there may be differences between the SAR levels for various handsets, they all meet the governmental requirements for safe exposure. The actual SAR level of the handset while operating can be well below the highest value.

This is because the handset is designed to operate at multiple power levels so as to use only the power required to reach the Network.

Additional information on SAR can be obtained on the following Websites.

Ministry of Internal Affairs and Communications (MIC)

<http://www.tele.soumu.go.jp/e/sys/ele/index.htm>

Association of Radio Industries and Businesses (ARIB)

<http://www.arib-emf.org/> (Japanese)

*Requirements are stipulated in Radio Law (Ordinance Regulating Radio Equipment, Article 14-2).

Water & Dust Resistance

Water & Dust Resistance

Handset complies with IPX5 (former JIS protection level 5)¹ and IPX7 (former JIS protection level 7)² water protection standards as well as IP5X (JIS protection level 5)³ dust protection standard, with Port Cover and Battery Cover closed firmly.

¹IPX5 compliant means that a handset continues to function as a phone after being subjected to a water jet (approximately 12.5 liters/min.) discharged from a nozzle (inner diameter: 6.3 mm), from all directions (approximately 3 m from handset) for at least 3 minutes.

²IPX7 compliant means that a handset continues to function as a phone after being gently submerged to the depth of 1 m in still tap water at room temperature, left there for approximately 30 minutes, then removed from it.

³IP5X compliant means that a handset continues to function as a phone and its safety is maintained after being agitated in a device containing dust of 75 µm or smaller in diameter for 8 hours, then removed from the device.

- Water/dust resistance may be affected under some circumstances. Warranty does not cover malfunctions resulting from misuse.
- Handset is compliant with IPX5, IPX7 and IP5X water/dust protection standards. However, ingress of dirt, sand, mud, metal powder, food, beverage, etc. may cause malfunction.

■ Important Notes

- Close Battery Cover and Port Cover firmly. Debris (hair, sand, fibers, etc.) trapped between gasket and base may expose handset to liquid/dust.
- If Battery/Port Cover is left open liquid exposure may cause handset malfunction/electric shock. Power off, then remove battery.
- If handset is wet, wipe it with dry cloth.
- Do not open/close Battery/Port Cover with wet hands or while handset is wet.
- Do not use Headphones while Headphone Jack is wet or obstructed by sand/dirt; water/dust resistance may be affected causing malfunction.
- Handset is only water resistant against fresh/tap water between 5°C - 35°C.

■ Dust Resistance

- Handset complies with IP5X dust protection standard. However, dust resistance may not be guaranteed under some circumstances (placing handset directly on sand, etc.).
- Remove dust from handset completely before use by rinsing off with water, etc.
- Any residue may damage Display; cause serious malfunction.

Precautions

- Do not subject handset to soap, detergent, bath powder/oil, sea/pool/spa water, hot water, etc.
- Rinse off sea/pool water, beverage, dirt, sand, mud, etc. immediately; residue may cause malfunction if allowed to dry.
- Rinse off sand, dirt, etc. completely before use; any residue may damage handset causing malfunction.
- Do not soak handset in bath or pool; never use it in water (including opening/closing of handset and pressing keys).
- Handset is not resistant to water pressure. Avoid high-pressure water/shower (over 6 liters/min.) or water immersion.
- Do not expose handset to extreme humidity for long periods; avoid prolonged use in bath/shower rooms.
- Do not use in saunas. Avoid hot air from dryers, etc.
- Use handset within 5°C - 35°C (up to 40°C for brief periods in bath/shower rooms, etc.) and 35% - 90% humidity.
- Avoid extreme temperature (near stoves, inside refrigerators, etc.).
- Volume may be low when Microphone/Earpiece/Speaker is wet; dry handset before use (see "[Drying Handset](#)").
- Battery, Desktop Holder and optional accessories are not water or dustproofed.
- Do not subject handset to strong impacts; do not poke Microphone, Earpiece, Speaker, Camera Ornament, etc. with a cotton swab or sharp object; water/dust resistance may be affected.
- Avoid placing handset directly on sand. Sand may penetrate Earpiece, Speaker, etc., resulting in low volume.
- Touch Panel may not respond properly if wet or touched with wet fingers.
- Do not move handset directly from a cold place to a warm humid place; condensation may occur. Should this happen, dry handset naturally at room temperature.
- Handset does not float on water.
- Keep handset out of heavy rain.
- Do not let liquid-exposed handset remain wet; exposure to cold may freeze liquid causing malfunction.
- Damaged Battery/Port Cover affects water/dust resistance; contact a SoftBank Shop.

Charging Precautions

- Battery, Desktop Holder and optional accessories are not water or dustproofed. Avoid moisture (precipitation, bath/shower, etc.); may cause fire, electric shock or damage.
- Never charge battery while handset is wet; may cause fire or damage due to electric shock or short-circuit.
- Close Port Cover firmly after charging without using Desktop Holder.
- Do not touch Desktop Holder or Charger with wet hands. Electric shock may occur.
- Do not use Desktop Holder or Charger in rooms in which water is regularly in use (kitchens, bath/shower rooms, etc.); may cause fire or electric shock.
- Should External Connector Port be exposed to liquid, never charge battery; follow these steps first:
 - 1 Holding handset firmly by its sides, shake it about 20 times
 - 2 Pat against dry cloth to remove moisture from External Connector Port
 - 3 Leave handset on dry cloth for approximately 2 - 3 hours at room temperature

Care & Maintenance

- Proper care of Port Cover/battery housing gasket is crucial for continued handset water/dust resistance. Observe the following:
 - Do not remove or damage gaskets. Keep them clean.
 - Do not insert sharp objects through Port/Battery Cover gaps or Headphone Jack; may damage gasket and affect water/dust resistance.
 - If Port Cover/battery housing gasket is damaged or deformed, contact a SoftBank Shop.
- To maintain water/dust resistance, replace related parts every two years regardless of their condition. Customer-requested parts replacement incurs fees and requires handset submission. For details, contact a SoftBank Shop or SoftBank Customer Support, [General Information](#).

Washing Handset

Wipe off dirt, sand, beverage, etc., gently with cloth. Then with Battery Cover closed, hold handset approximately 10 cm below faucet or shower head and wash with low-pressure tap water (6 liters/min. or lower) at normal temperature (5°C - 35°C). Wash with your hands, taking care not to open Covers; do not use a brush or sponge. Dry handset before use.

- Before washing handset, make sure that Battery Cover and Port Cover are closed firmly.
- Do not use a washing machine or ultrasonic cleaner.
- Headphone Jack tends to accumulate dust, sand, etc.; rinse it off and dry Headphone Jack completely before use. Any residue may cause malfunction.
- Do not put a cotton swab, cloth, etc. into Headphone Jack; water/dust resistance may be affected causing malfunction.
- Do not place handset in a microwave oven to dry it. Battery/handset may leak, burst, overheat or ignite; may cause malfunction, accident or injury.
- Do not dry handset by exposing it to extreme heat (hot air from dryers, etc.); may cause warping, discoloration or damage.

Drying Handset

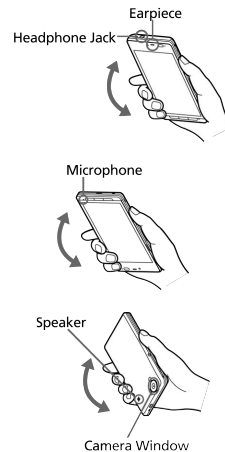
Dry Headphone Jack, Earpiece, Microphone, Speaker and Camera window when exposed to water.

1

Wipe handset surface with dry cloth

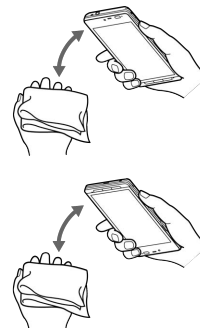
2

Holding handset firmly by its sides, shake it about 20 times



3

Pat against dry cloth to remove moisture from grooves



- Do not put a cotton swab, cloth, etc. into the opening.

4

Leave handset on dry cloth for approximately 2 - 3 hours at room temperature



Important

Do not use wet handset.

- Voice quality may be affected, or moisture may transfer to clothes, bag, etc.
- Moisture may short-circuit Headphone Jack, etc.
- Exposure to cold may freeze moisture; cause malfunction.

102SH/102SHII User Guide Index

A

About Phone.....	92
About USIM Card.....	7
Accounts & Sync Settings.....	89
Applications.....	21
Application Settings.....	87

B

Battery Installation.....	12
Browsing the Internet.....	60

C

Calling from Outside Japan.....	81
Capturing 3D Images.....	67
Charging Battery.....	14
Connecting to Wi-Fi.....	72
Creating/Sending Gmail.....	56
Customer Service.....	97
Customizing Home Screen.....	38

D

Date & Time Settings.....	91
---------------------------	----

F

FCC Notice.....	112
-----------------	-----

G

General Notes.....	110
Global Roaming.....	80
Google Play™.....	27

H

Handling SI Mail/SMS.....	56
Handset & Hardware Care.....	109
Handset Interface.....	20
Handset Power On/Off.....	15
Home Screen Basics.....	34

I

Important Product Information.....	107
Introduction.....	3

L

Language & Keyboard Settings.....	90
Launcher Basics.....	35

M

Mail Types.....	52
Manner Mode & Offline Mode.....	23
Music.....	70
My Phone Number.....	22

N

Notifications Panel.....	37
--------------------------	----

O

Opening Received Gmail.....	57
Optional Services.....	43

P

Package Contents.....	6
Parts & Functions.....	6
Photo Camera.....	64
Placing/Answering Calls.....	42
Privacy Setting.....	89

R

Receiving & Replying S! Mail/SMS.....	54
---------------------------------------	----

S

Safety Precautions.....	100
SD Card.....	9
Security Codes.....	29
Sending S! Mail/SMS.....	52
Sleep Mode.....	31
Software Update.....	31
Sound Settings.....	86
Specific Absorption Rate (SAR).....	113
Specifications.....	96
Status Bar.....	36
Still Images & Video.....	70

T

Text Entry.....	24
-----------------	----

U

USIM PIN.....	30
Using Address Book.....	48
Using Bluetooth®.....	75
Using Email.....	58
Using Google Accounts.....	26
Using Touch Panel.....	16

V

Video Camera.....	65
-------------------	----

W

Water & Dust Resistance.....	113
Wireless & Network Settings.....	84

SoftBank 102SH/102SHII User Guide

July 2012, Second Edition

SOFTBANK MOBILE Corp.

Visit SoftBank Shop for assistance

Model : SoftBank 102SH/102SHII

Manufacturer : SHARP CORPORATION